

## Supplementary data:

# Phylogeny of endemic skinks of the genus *Lygosoma* (Squamata: Scincidae) from India suggests an *in situ* radiation

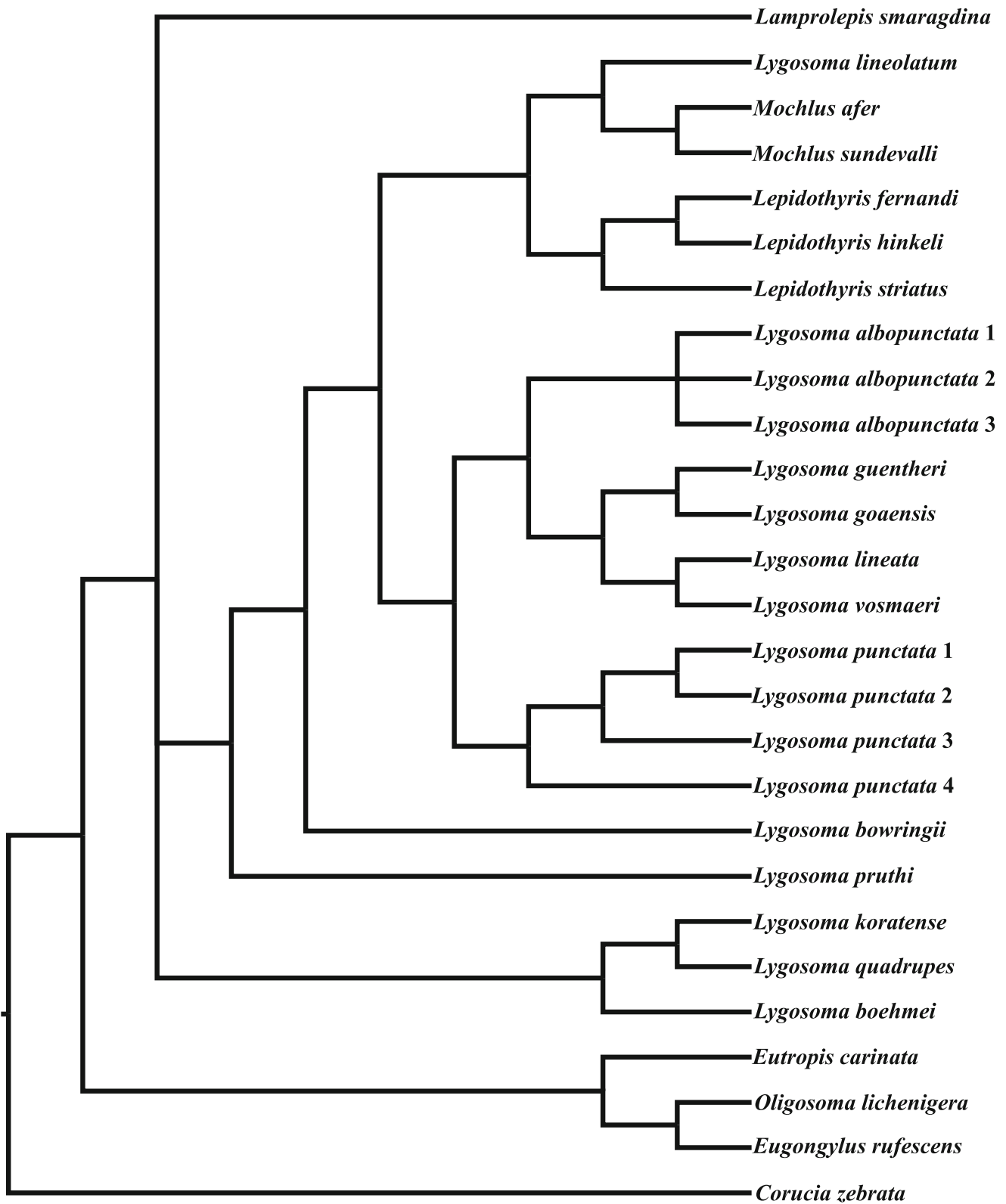
Aniruddha Datta-Roy, Mewa Singh and K. Praveen Karanth

*J. Genet.* **93**, 163–167

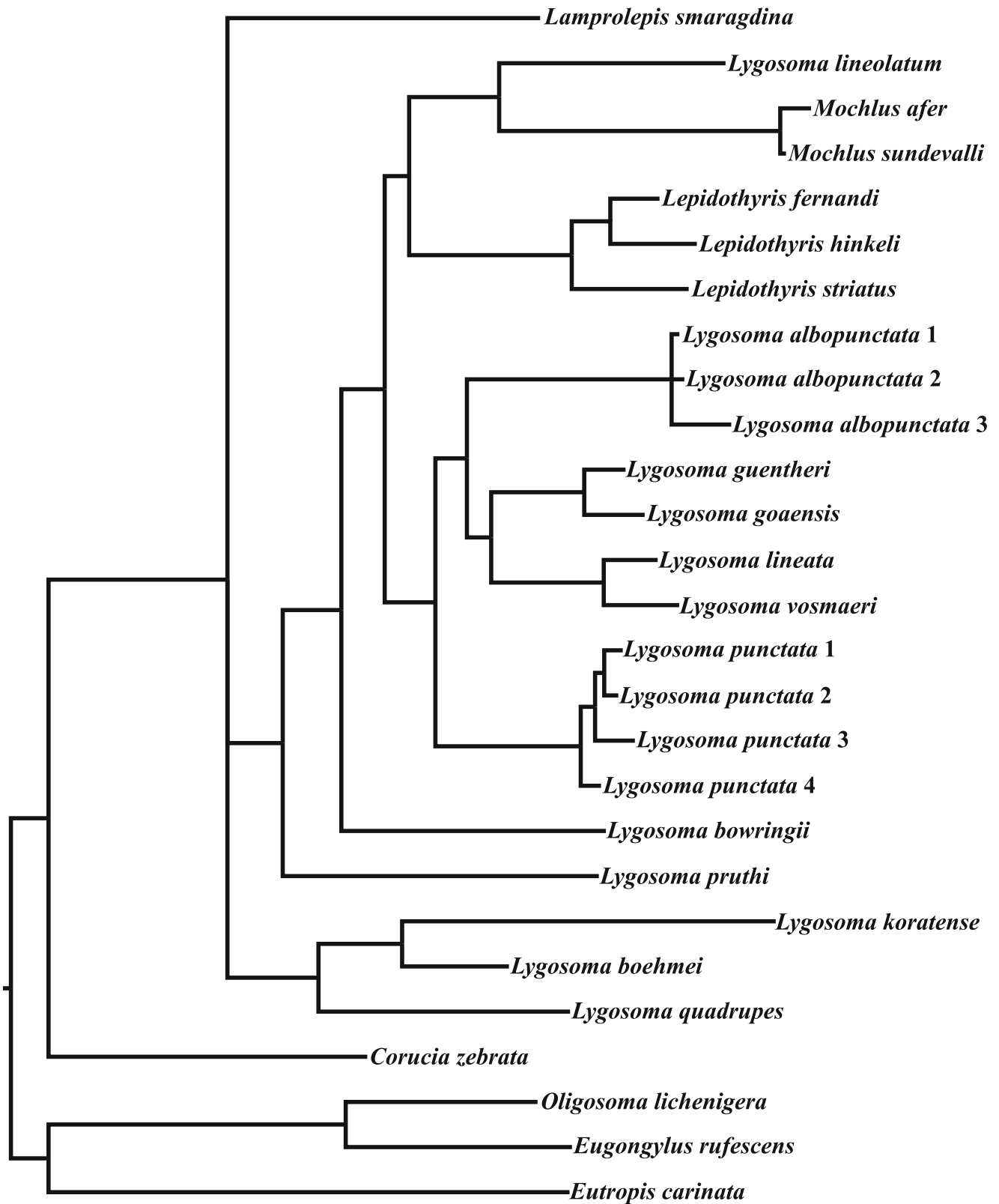
**Table 1.** List of samples used for this study with accession numbers and locality data.

Taxon	Voucher number	12S	16S	Location
<i>Corucia Zebrata</i>	–	AB028793	AB028797	Solomon
<i>Eutropis carinata</i>	CES 08/ 808	JQ767967	JQ767950	Karnataka, India
<i>Oligosoma lichenigera</i>	–	EU567965	EU567869	Blackburn Island
<i>Eugongylus rufescens</i>	–	AY169567	AY169604	Papua New Guinea
<i>Lamprolepis smaragdina</i>	–	AB028774	AB028785	Saipan
<i>Lygosoma lineolatum</i>	–	AY308423	AY308271	Myanmar
<i>Lygosoma albopunctata</i> 1	–	AY308414	AY308262	Trivandrum
<i>Lygosoma guentheri</i>	CES 08/ 822	KF577785	KF577794	Kudremukh, Karnataka, India
<i>Mochlus afer</i>	–	AY308412	AY308261	Kiyewetanga, Kenya
<i>Lygosoma pruthi</i>	CES 09/ 930	KF577786	KF577795	Javadi hills, Tamil Nadu, India
<i>Lygosoma punctata</i> 1	CES 08/ 810	KF577787	KF577796	Chamrajnagar, Karnataka, India
<i>Lygosoma punctata</i> 2	CES 08/ 811	KF577788	KF577797	Javadi hills, Tamil Nadu, India
<i>Lygosoma punctata</i> 3	CES 08/ 812	KF577789	KF577798	Bangalore, India
<i>Lygosoma lineata</i>	CES 09/ 875	KF577790	KF577799	Gujarat, India
<i>Lygosoma punctata</i> 4	CES 08/ 806	KF577791	KF577800	Yercaud, Tamil Nadu, India
<i>Lygosoma bowringii</i>	–	AB028775	AB028786	Thailand
<i>Lygosoma koratense</i>	–	AY308421	AY308269	Malaysia
<i>Lygosoma quadrupes</i>	–	AB028806	AB028818	Thailand
<i>Lygosoma albopunctata</i> 2	CES 09/ 954	KF577792	KF577801	Sepahijala, Tripura, India
<i>Lygosoma goaensis</i>	BNHS 1966	KF577793	KF577802	Amboli, Maharashtra, India
<i>Mochlus sundevalli</i>	–	AY308427	AY308275	Kenya
<i>Lepidothyris fernandii</i>	–	AY308417	AY308265	Cameroon
<i>Lepidothyris hinkeli</i>	–	AY308419	AY308267	Rwanda
<i>Lygosoma vosmaeri</i>	BNHS 1975	x	KF577803	Gujarat, India
<i>Lygosoma albopunctata</i> 3	CES 09/ 847	x	KF577804	Bagdogra, West Bengal, India
<i>Lepidothyris striatus</i>	–	x	FJ807720	Congo
<i>Lygosoma boehmei</i>	–	x	EF193650	Vietnam

The catalogue numbers for the samples for which the sequences were generated are depicted. x, refers to unavailable sequence data; CES, Centre for Ecological Sciences; BNHS, Bombay Natural History Society Zoological museum where the reference samples are stored.



**Figure 1.** Maximum parsimony (MP) tree based on 12S+16S+ rRNA dataset.



**Figure 2.** Bayesian inference tree based on 12S+16S rRNA partitioned dataset.