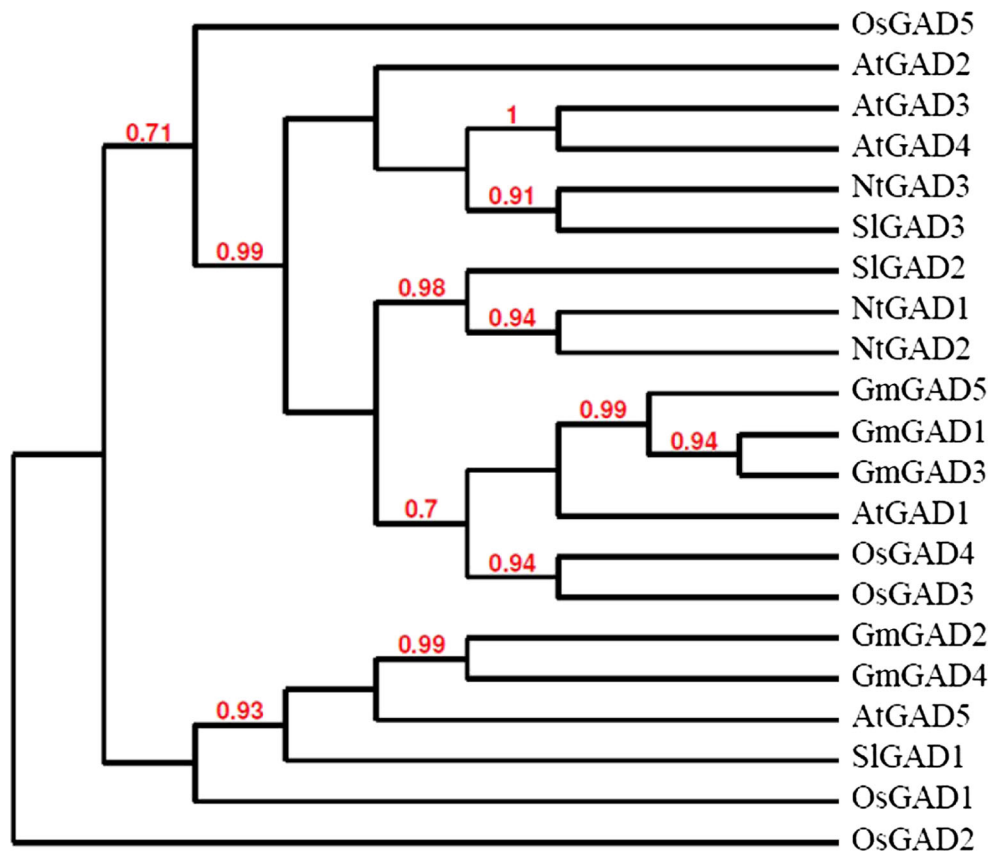


Evolution and expression analysis of the soybean glutamate decarboxylase gene family

TAE KYUNG HYUN, SEUNG HEE EOM, XIAO HAN and JU-SUNG KIM

J. Biosci. 39(5), December 2014, 899–907, © Indian Academy of Sciences

Supplementary material



Supplementary figure 1. Phylogenetic analysis of the *GAD* gene family in soybean (Gm), *Arabidopsis thaliana* (At), rice (Os, *Oryza sativa* L.), tobacco (Nt, *Nicotiana tabacum*) and tomato (Sl, *Solanum lycopersicum* L.).