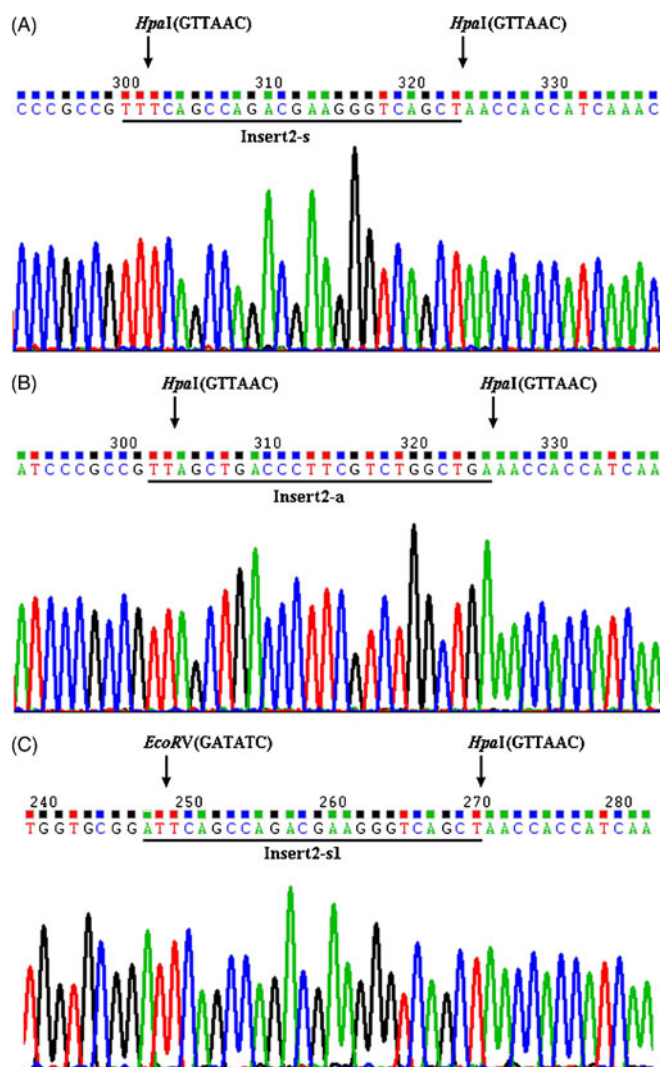


Realizing directional cloning using sticky ends produced by 3'-5' exonuclease of Klenow fragment

GUOJIE ZHAO, JUN LI, TIANYU HU, HUA WEI and YIFU GUAN

J. Biosci. 38(5), December 2013, 857–866, © Indian Academy of Sciences

Supplementary material



Supplementary figure 1. Sequencing of PCR positive clones. (A) Forward insertion of non-directional cloning. (B) Reverse insertion of non-directional cloning. (C) Forward insertion of directional cloning.

Supplementary table 1. Oligonucleotides used in this study

Oligonucleotides	Sequences*
s/s8c	5'- <u>ATCGTACCCCGGGGTACGAT</u> -3'
s/s8-4	5'- <u>ATCGTACCCCGGGGTACG</u> -3'
s/s8c-h	5'- <u>AACGTACCCCGGGGTACGTT</u> -3'
Insert1-s	5'- <u>TTCAGCCAGACGAAGGGTCAGCT</u> -3'
Insert1-a	5'- <u>TAGCTGACCCTTCGTCTGGCTGA</u> -3'
Insert2-s	5'- <u>TTTCAGCCAGACGAAGGGTCAGCT</u> -3'
Insert2-a	5'- <u>TTAGCTGACCCTTCGTCTGGCTGA</u> -3'
Insert3-s	5'- <u>GTTTCAGCCAGACGAAGGGTCAGCT</u> -3'
Insert3-a	5'- <u>GTTAGCTGACCCTTCGTCTGGCTGA</u> -3'
Insert4-s	5'- <u>CGTTTCAGCCAGACGAAGGTCAGCT</u> -3'
Insert4-a	5'- <u>GGTTAGCTGACCCTTCGTCTGGCTGA</u> -3'
Insert2-s1	5'- <u>ATTCAGCCAGACGAAGGGTCAGCT</u> -3'
D20	Dimer of s/s8c
D20-2	Dimer of s/s8-4
D20'	Dimer of s/s8c-h
D24-1	Duplex of insert1-s and insert1-a
D26-2	Duplex of insert2-s and insert2-a
D28-3	Duplex of insert3-s and insert3-a
D30-4	Duplex of insert4-s and insert4-a
D26-2'	Duplex of insert2-s1 and insert2-a

*Underlined sequences are the parts that form duplex.