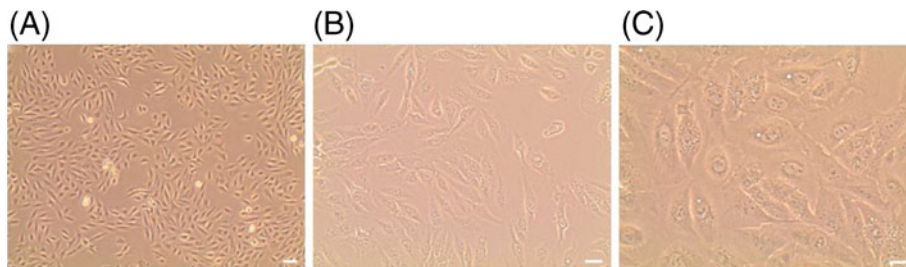


Synergistic growth inhibition of cancer cells harboring the *RET/PTC1* oncogene by staurosporine and rotenone involves enhanced cell death

ANTÓNIO PEDRO GONÇALVES, ARNALDO VIDEIRA, VALDEMAR MÁXIMO and PAULA SOARES

J. Biosci. 36(4), September 2011, 639-648, © Indian Academy of Sciences
Supplementary material



Supplemental figure 1. TPC-1 cells display a fibroblast-like morphology. Phase-contrast micrographs of TPC-1 cells; scale bars: 100µm (A), 50µm (B) and 30µm (C).