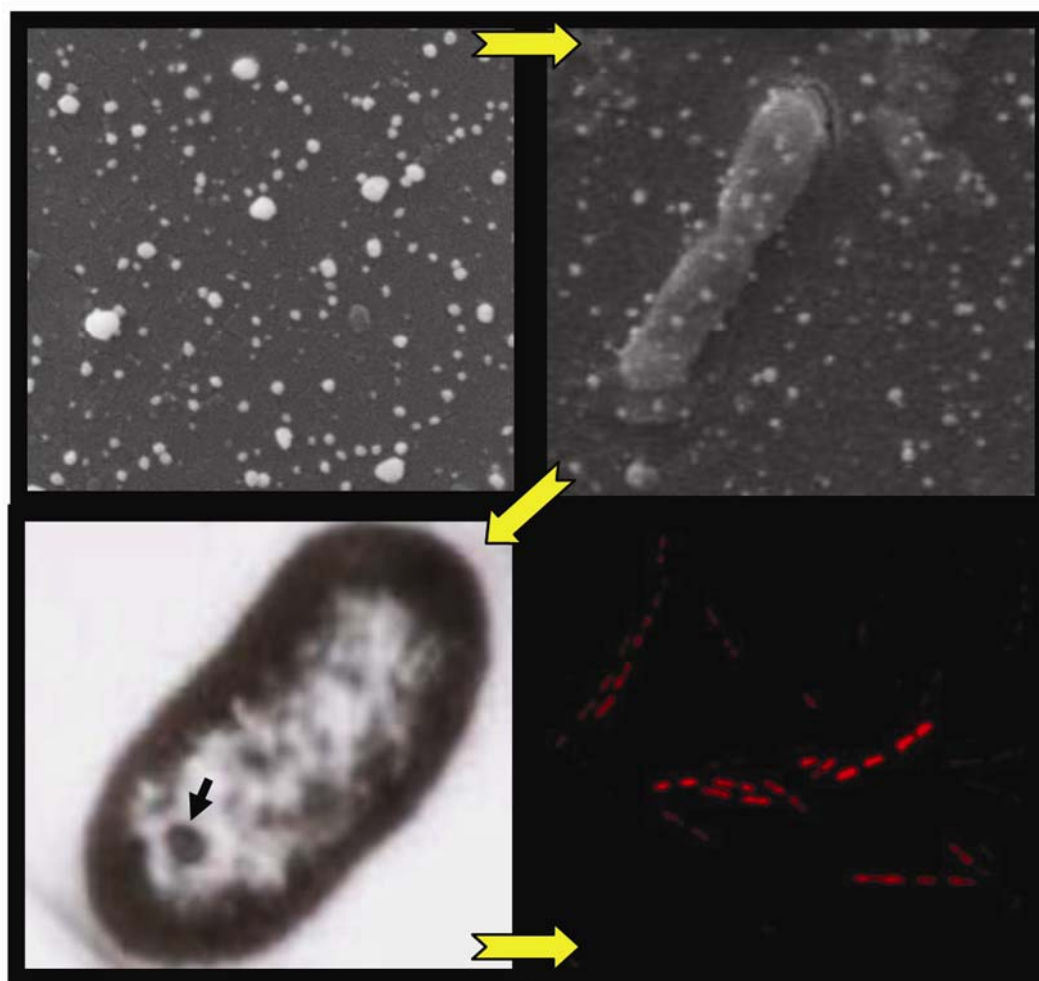


Electronic Supplementary Material

Studies on interfacial interactions of TiO₂ nanoparticles with bacterial cells under light and dark conditions by Swayamprava Dalai *et al* (pp 371–381).



Graphical abstract

Sequence of events occurring in course of cell-NP interaction: Surface adsorption, internalization and bioaccumulation of NPs which leads to stress upon bacteria.