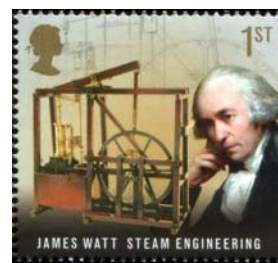
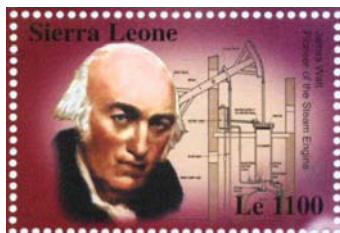


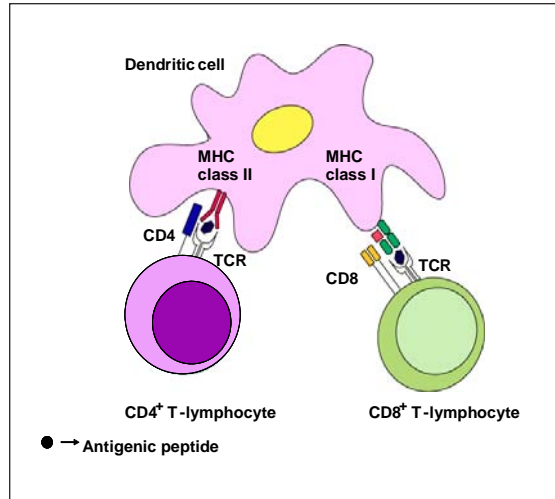
568



GENERAL ARTICLES

- 522 James Watt: Father of Steam Power**
K V Gopalakrishnan
- 530 James Watt and his Linkages**
Sangamesh R Deepak and G K Ananthasuresh
- 544 At the Root of Things** Palash B Pal
- 568 Yoichiro Nambu: Seer of Modern Physics**
N D Hari Dass
- 596 Broken CP Symmetry and the Physics Nobel Prize – 2008** Anjan S Joshipura
- 610 The Major Players in Adaptive Immunity**
Cell-mediated Immunity
Asma Ahmed, Banishree Saha, Anand Patwardhan, Shwetha Shivaprasad and Dipankar Nandi

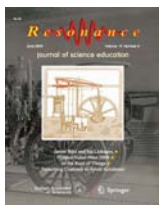




SERIES ARTICLES

622 Snippets of Physics
Perturbing Coulomb to Avoid Accidents!
 T Padmanabhan

Front Cover



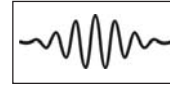
Watt's double-acting steam engine.

Back Cover



James Watt (1736–1819)
 (Illustration: Subhankar Biswas)

DEPARTMENTS



Editorial

J H Arakeri 519



Information and Announcements 630

Refresher Course on Geomatic Applications for Sustainable Water Resources and Environment

Errata 621

