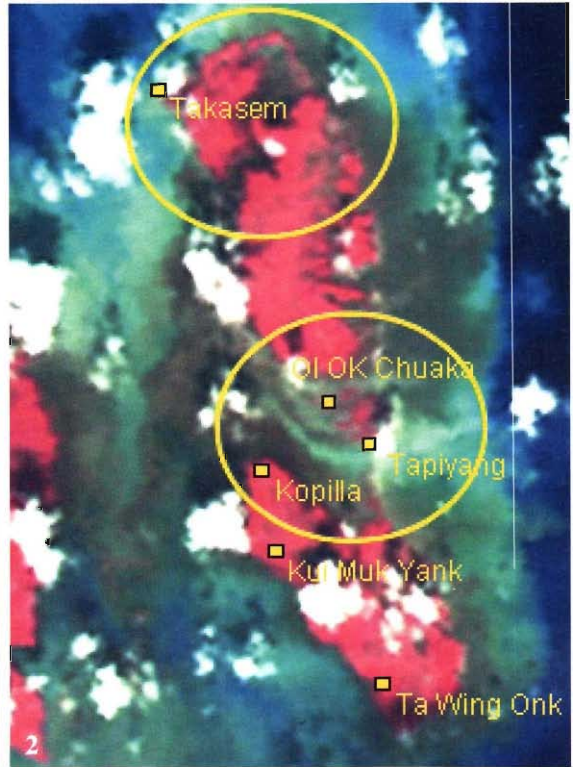
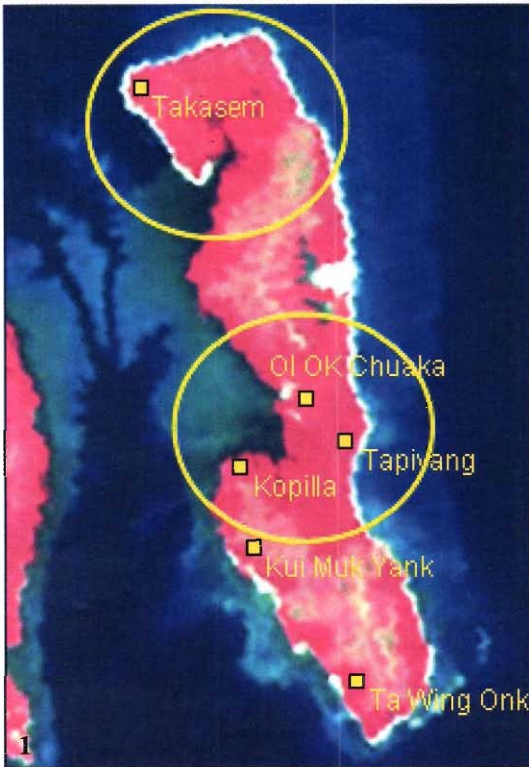


Satellite Images: Tsunami 2004



Trinkat Island:

1. Pre-tsunami picture as on 21-Dec-2004
IRS-P6: AWiFS
2. Post-tsunami picture as on 26-Dec-2004
IRS-P6: AWiFS
3. Post-tsunami picture as on 4-Jan-2005
IRS-P6: LISS-III

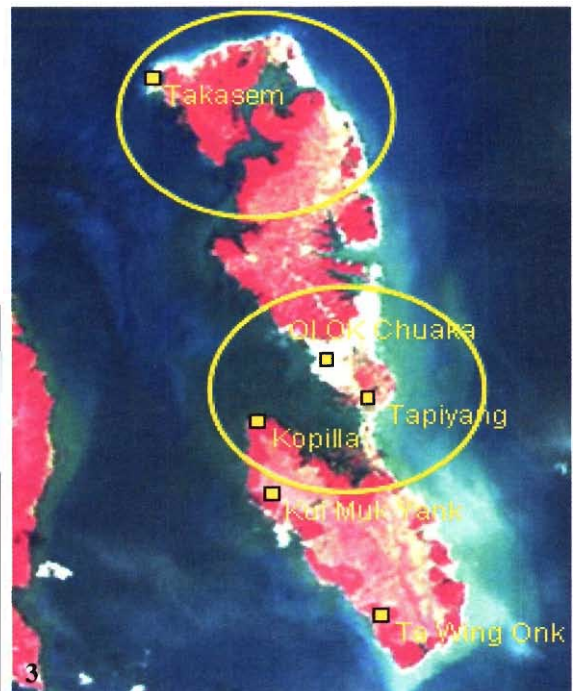
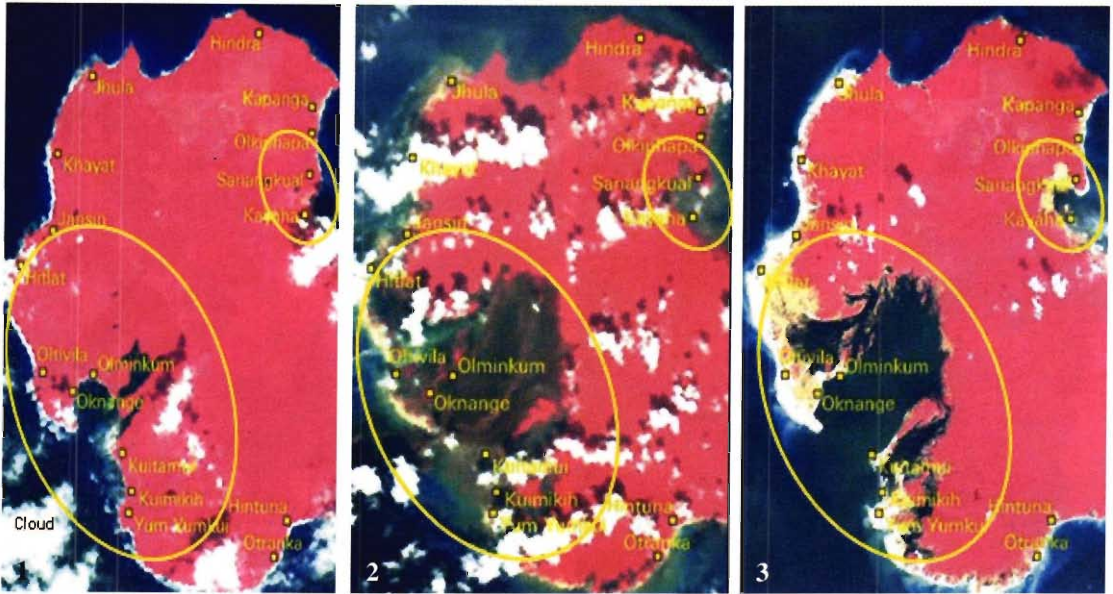


Table shows the affected area in some of the Nicobar Islands

Island Name	Area affected (ha)
Trinkat	360
Camorta	665
Nancowry	26
Katchall	1432
Little Nicobar	235
Great Nicobar	993



Satellite Images: Tsunami 2004

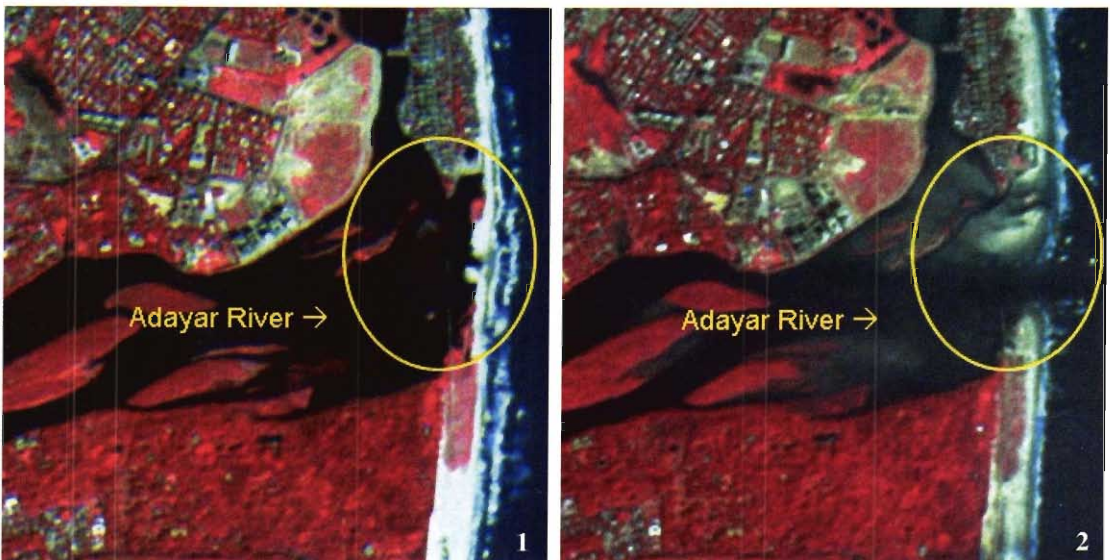


Katchall Island

1. Pre-tsunami picture as on 21-Dec-2004 – IRS-P6: AWiFS
2. Post-tsunami picture as on 26-Dec-2004 – IRS-P6: AWiFS
3. Post-tsunami picture as on 4-Jan-2005 – IRS-P6: LISS-III

Chennai (Adayar River Confluence)

1. Pre-tsunami picture as on 12-Jan-2004 – IRS-P6: LISS-IV MX
2. Post-tsunami picture as on 27-Dec-2004 – IRS-P6:LISS-IV MX



Courtesy: National Remote Sensing Agency, Department of Space, India.