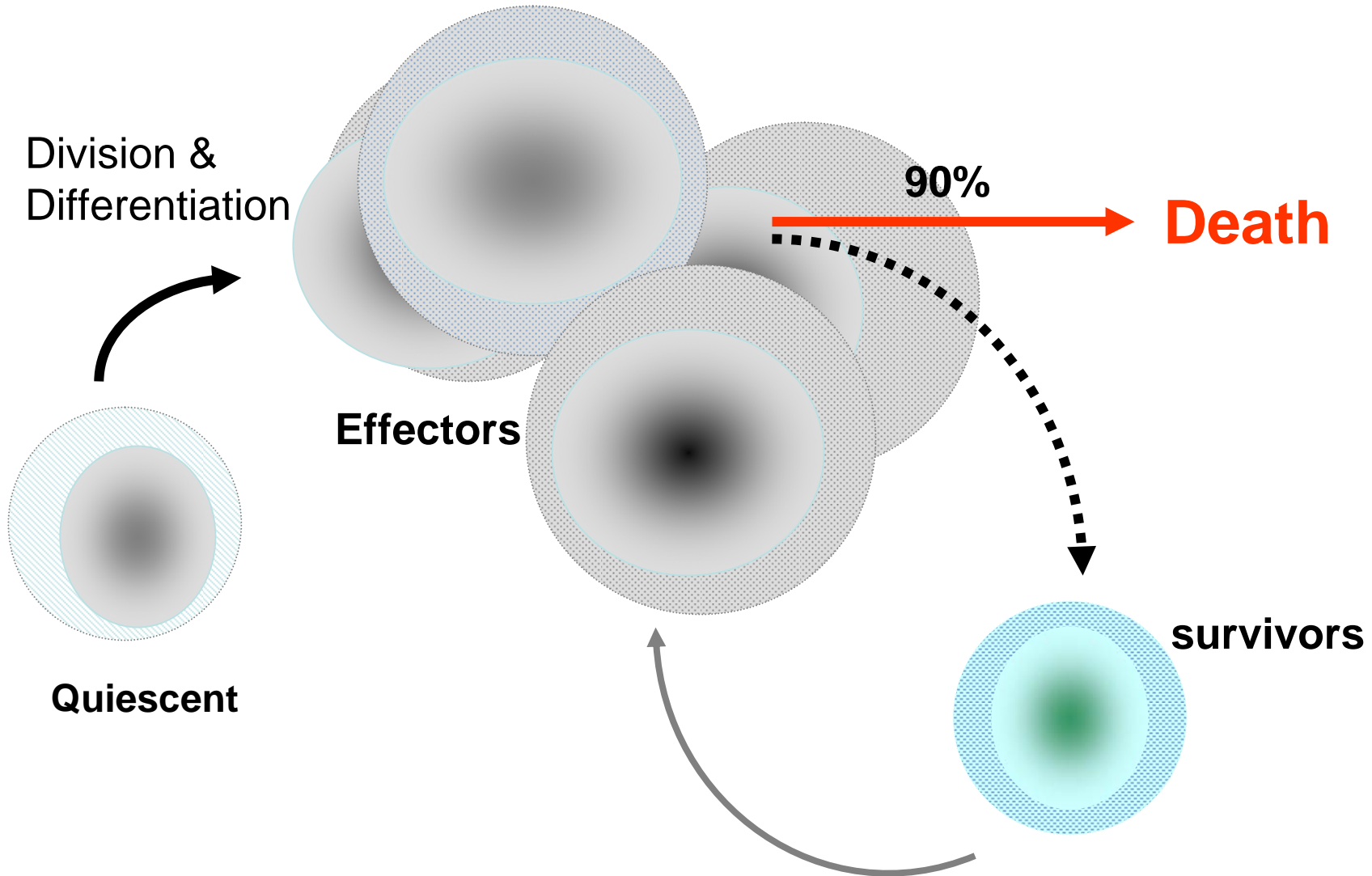


Surviving the crash:
mechanisms regulating
T-cell number

Apurva Sarin
National Centre for
Biological Sciences, TIFR,
Bangalore

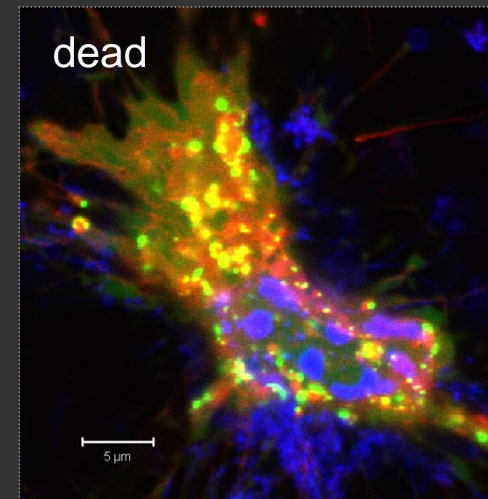
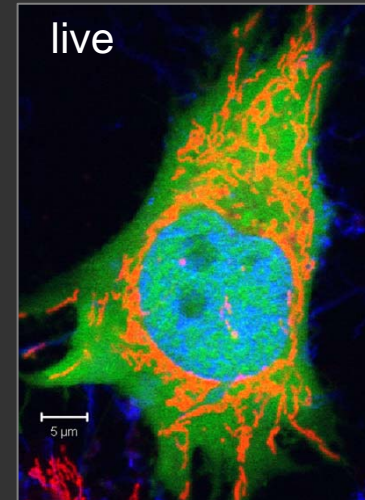
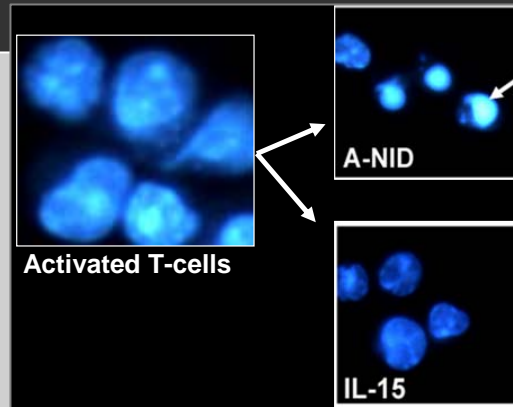
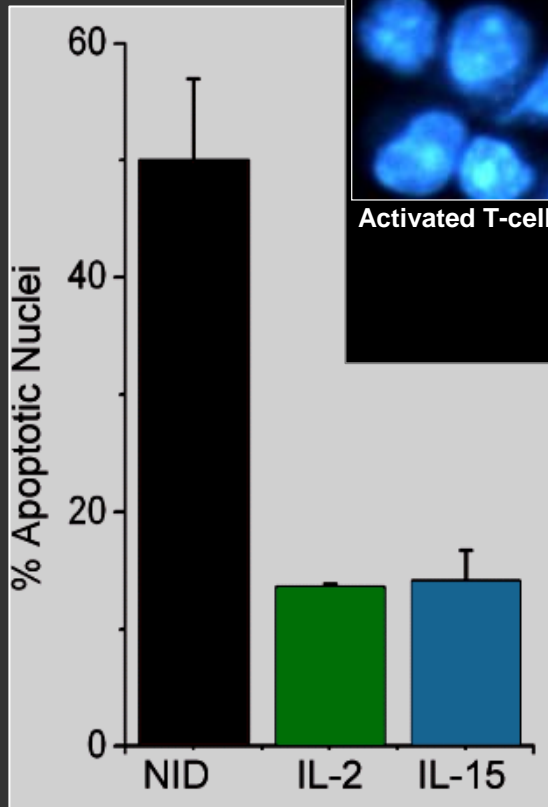
Controlling number in the mature T-cell compartment



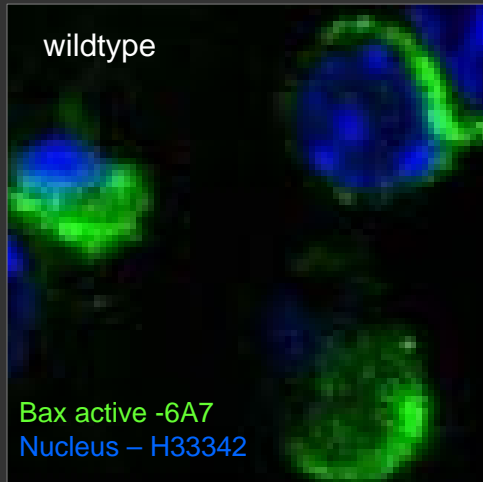
- Heterogeneity associated with the immune response
 - Interactions between molecules regulating cell death and survival
- Spatial and temporal elements
 - Cellular sites for the integration of cell death and survival cues
 - Spatial regulation of Notch activity for cell survival

Cell survival is determined by the availability and uptake of nutrients

T-cells

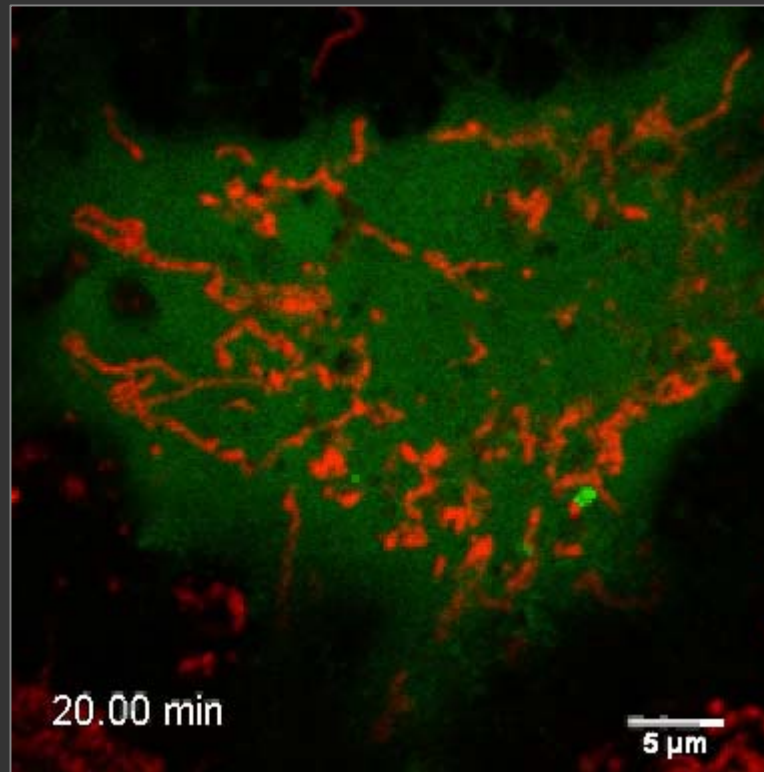
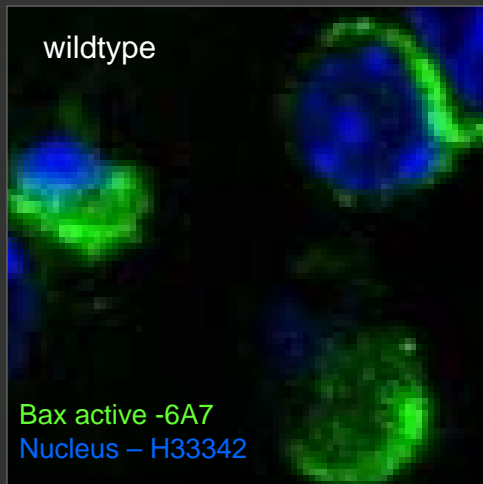


Apoptotic T-cells

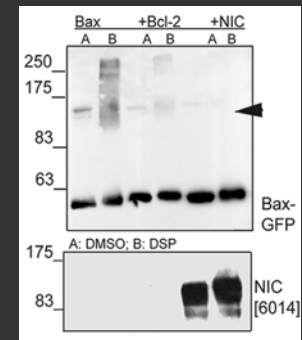
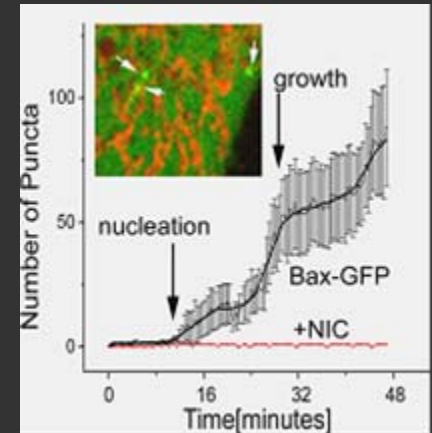


The formation of higher order apoptotic structures at the mitochondrion precedes cellular collapse

Apoptotic T-cells

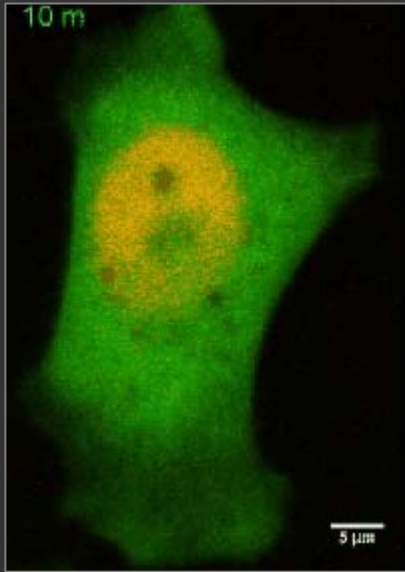


Tracking bax multimerization at mitochondria



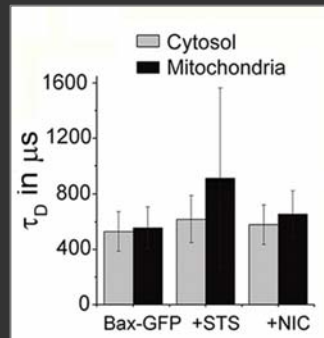
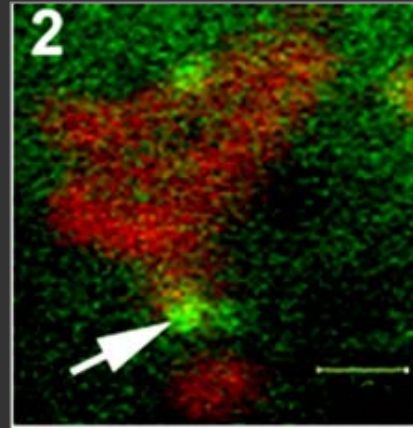
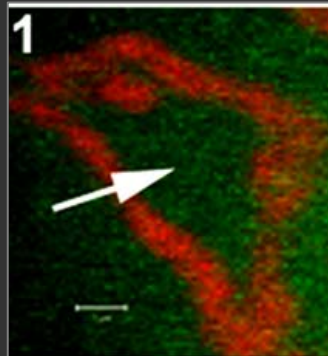
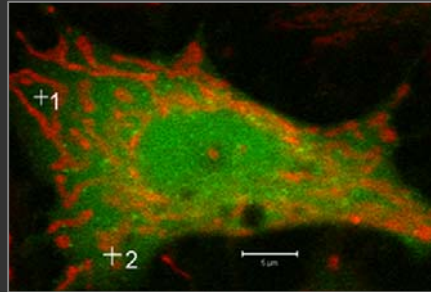
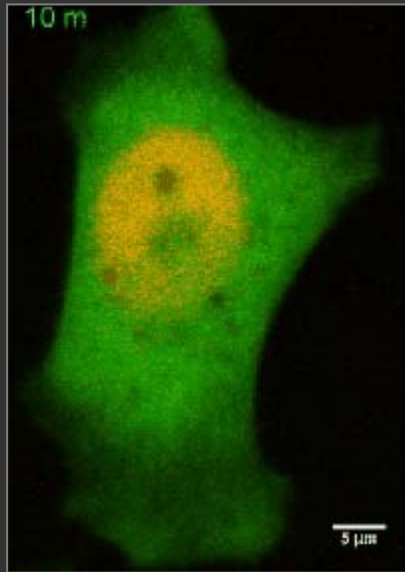
Molecules promoting survival intersect with these events

Notch activity protects
from cell death



Molecules promoting survival intersect with these events

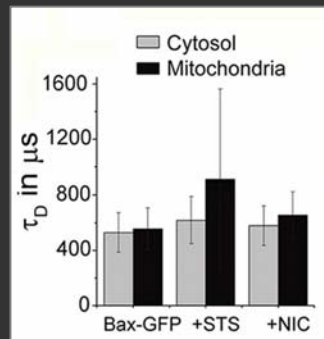
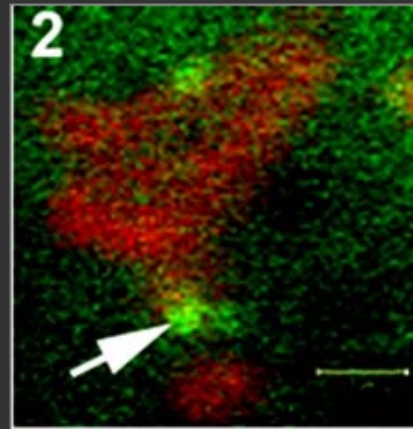
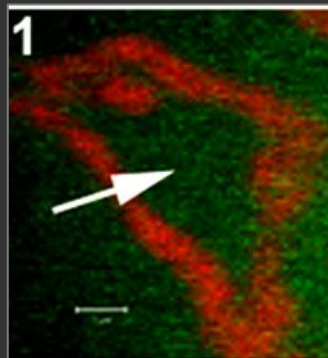
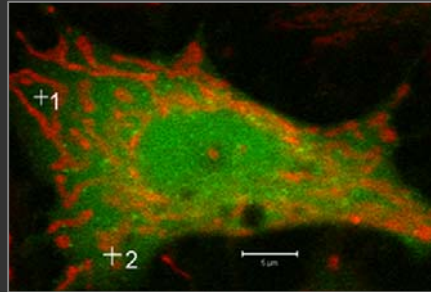
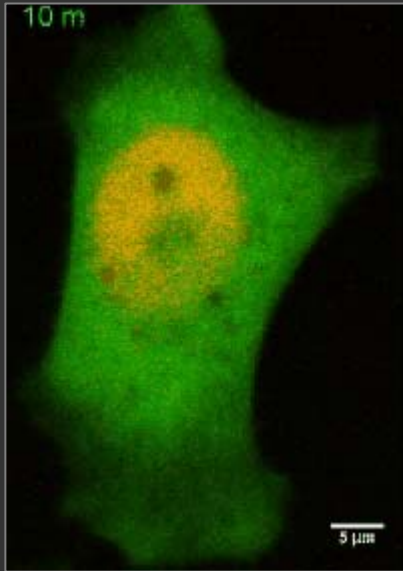
Notch activity protects from cell death



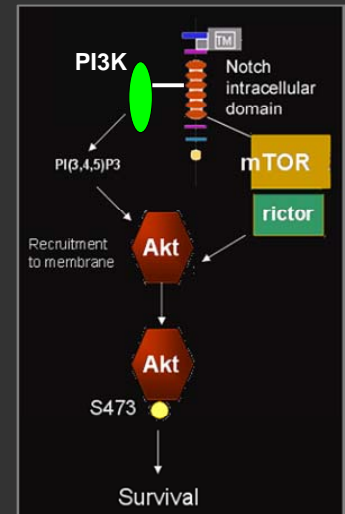
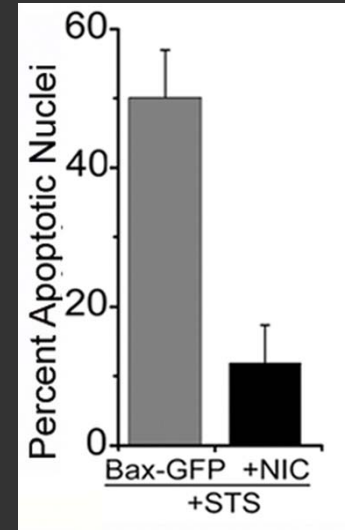
Analysis of Bax dynamics by
Fluorescence Correlation
Spectroscopy [FCS]

Molecules promoting survival intersect with these events

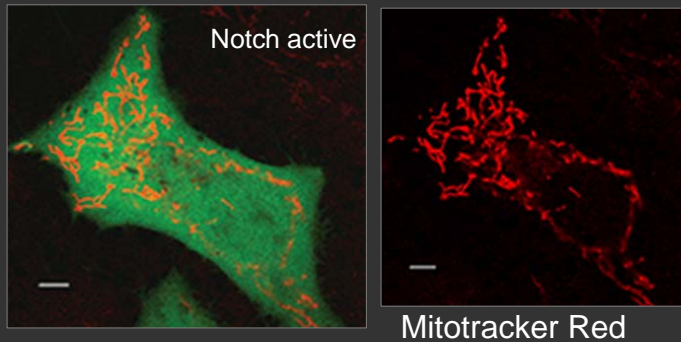
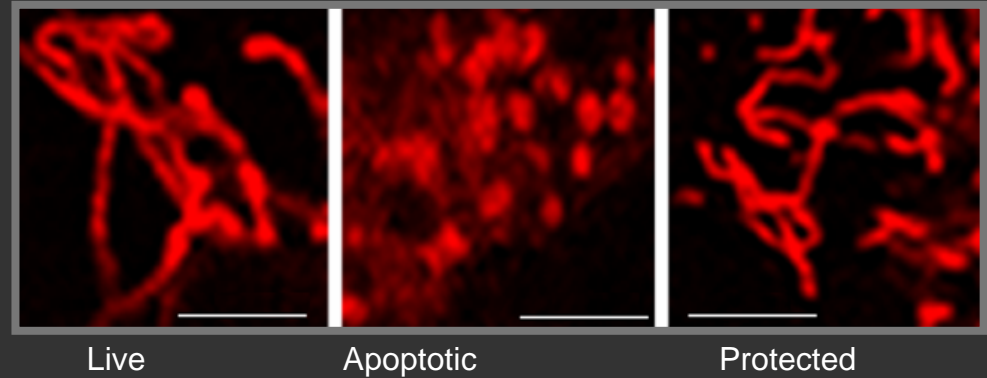
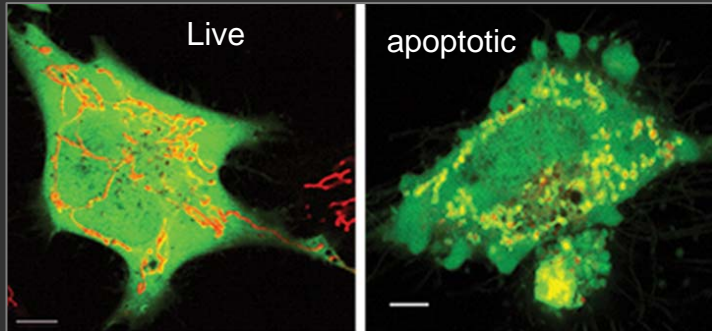
Notch activity protects from cell death



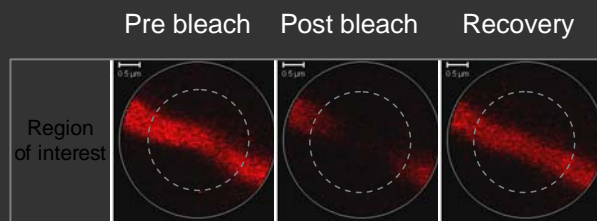
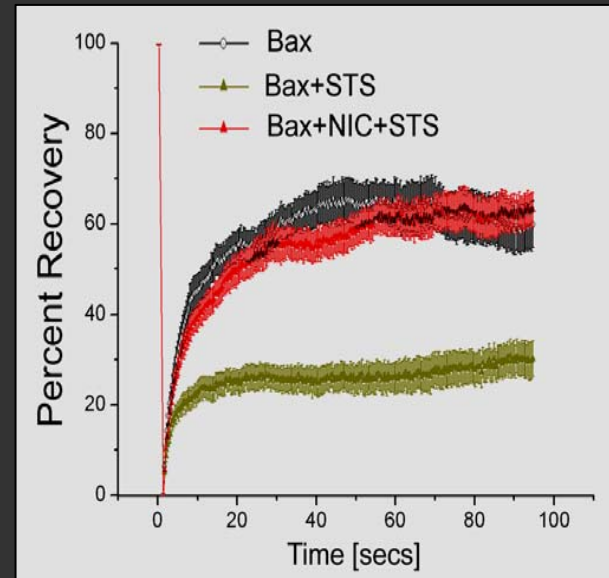
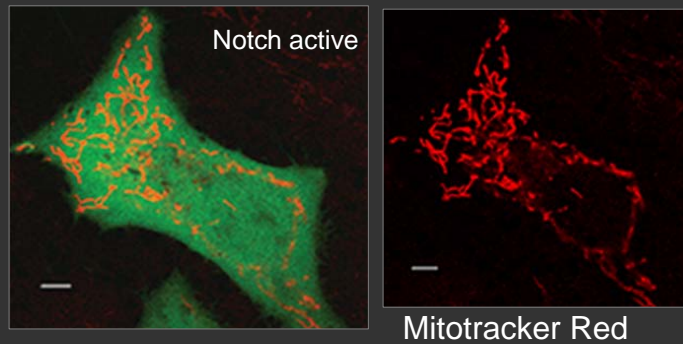
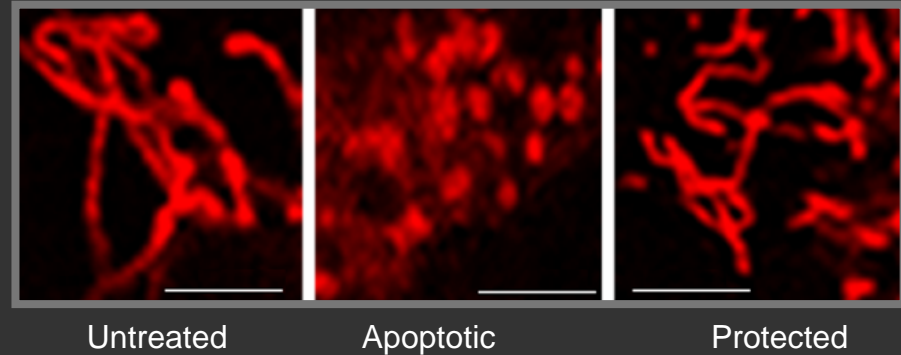
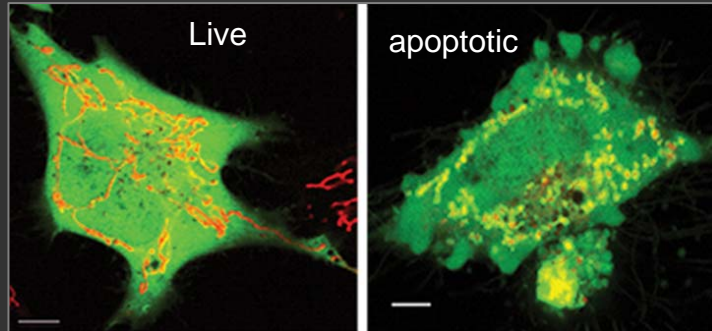
Analysis of Bax dynamics by Fluorescence Correlation Spectroscopy [FCS]



The mitochondrion is a key site for the integration of cell death and survival cues



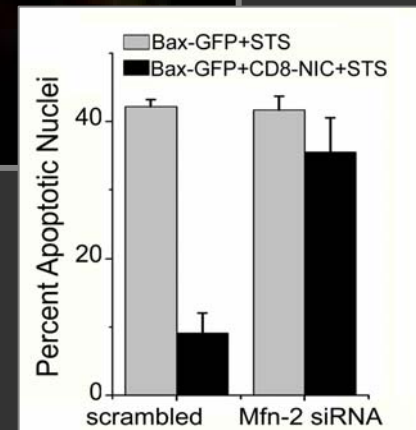
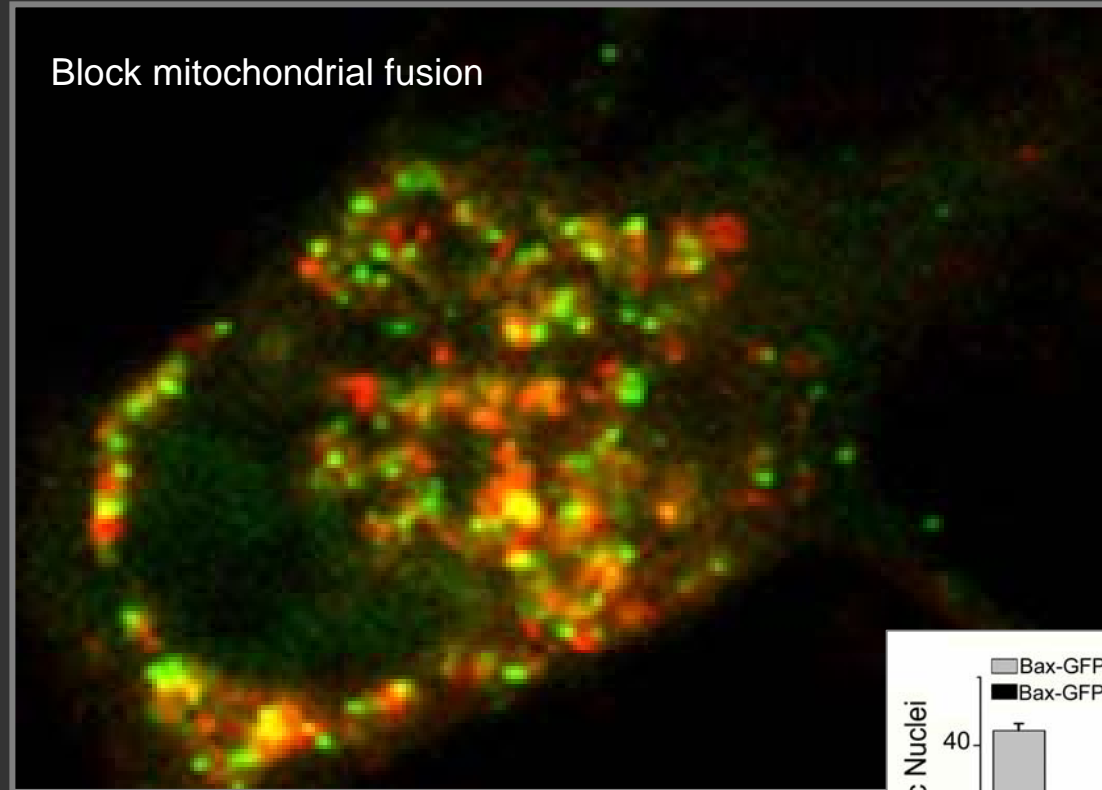
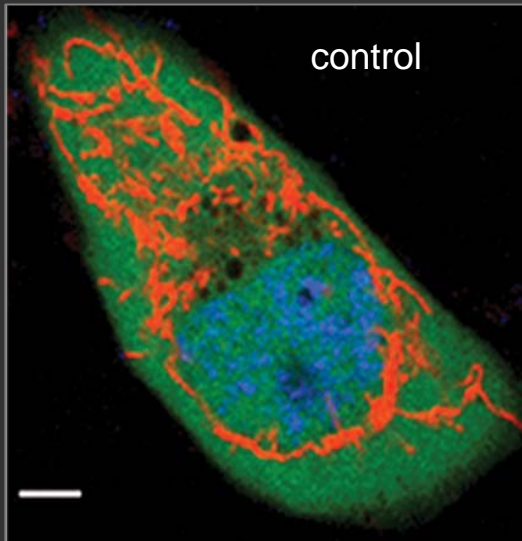
The mitochondrion is a key site for the integration of cell death and survival cues



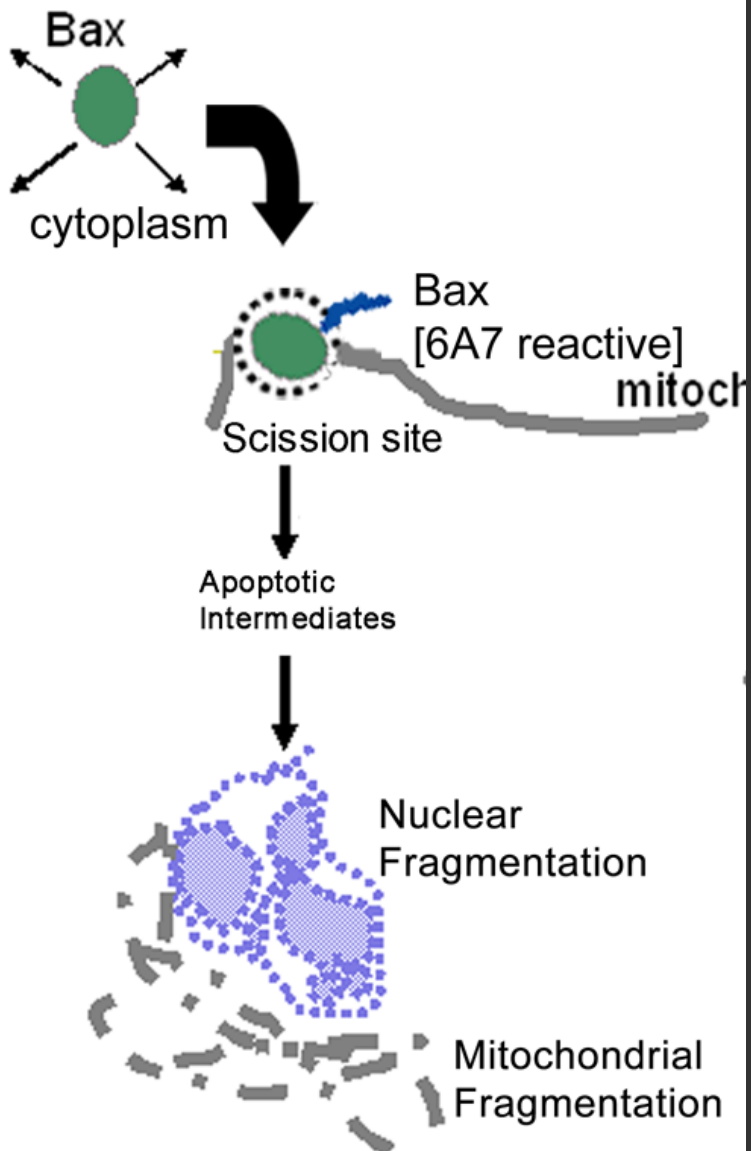
Fluorescence recovery after photobleaching in cells loaded with Mitotracker Red

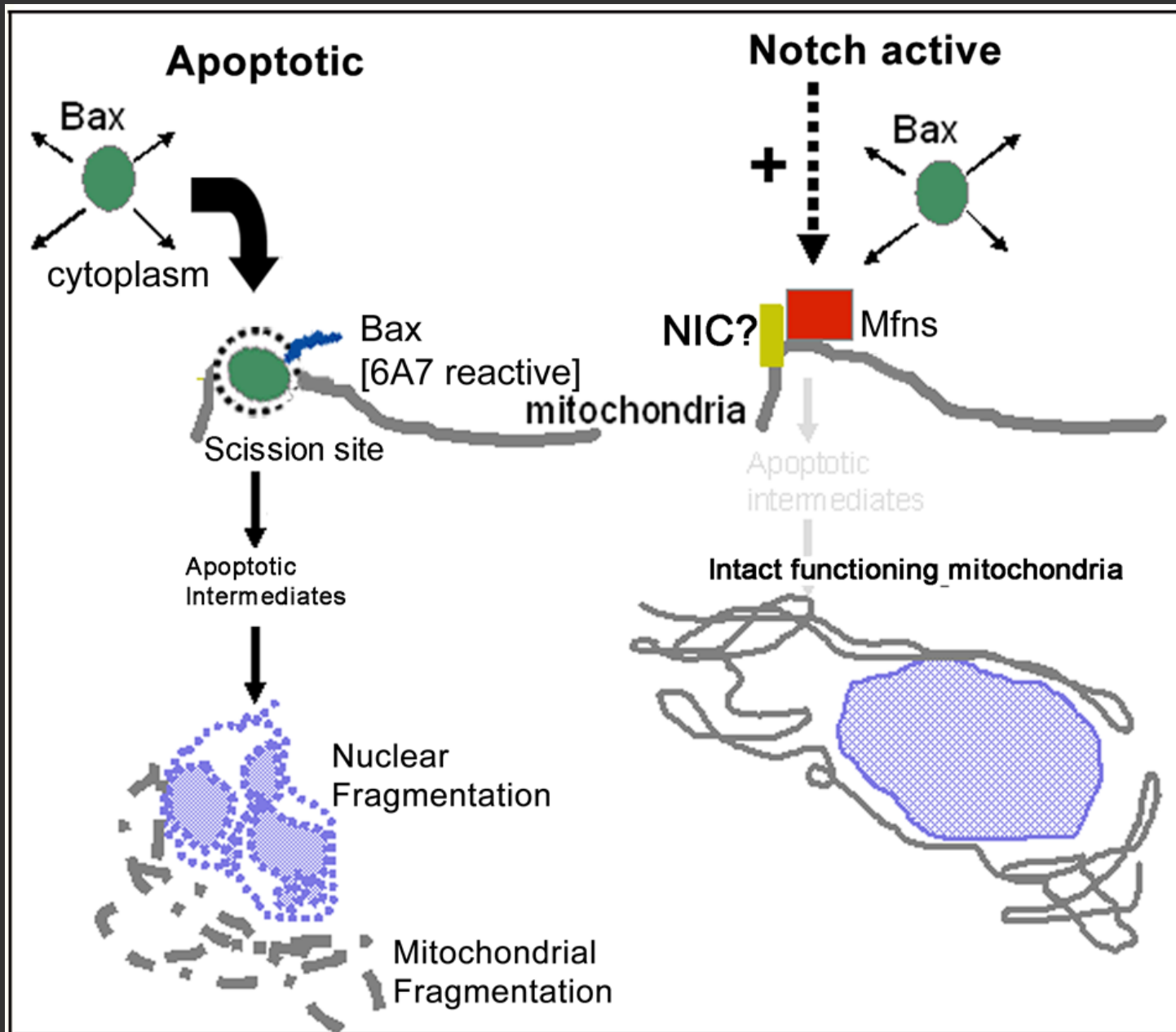
Laser for analysis- 543nm :1%; Bleach Laser -543nm : 100%

Notch activity requires the mitochondrial remodeling machinery



Apoptotic





- P Divya
- Lakshmi Perumalsamy
- Soumya Gupta (with GVS)
- Megha Garg
- Soumya (Jo) Lakshminarayan
- Vinod Singh
- Rasika Venkataram
- Manjula Nagala



Lakshmi

Manjula



Divya



Collaborators:

GV Shivashankar, NCBS & NUS
Singapore

Freddy Radtke, SIEC, Switzerland

Phil Hawkins, Babraham, Cambridge

NCBS, Bangalore

Funding:

Department of Science & Technology, India;

The Wellcome Trust UK;

Department of Biotechnology, India



H. Krishnamurthy
Central Imaging & Flow Facility,
NCBS

G. Mohan
Animal House, NCBS