

Diverse signatures of deformation, pressure-temperature and anatexis in the Rayagada sector of the Eastern Ghats granulite terrane

S K SEN¹ and S BHATTACHARYA²

¹*Department of Geological Sciences, Jadavpur University, Calcutta, India*

²*Geological Studies Unit, Indian Statistical Institute, Calcutta, India*

The granulites and granitoids around Rayagada in the north central part of the Eastern Ghats belt display structural and petrological differences when compared to similar rocks from Chilka and Jenapore in the northern Eastern Ghats. The impress of F_1 deformation is almost erased while that of F_3 is muted. The metapelites have a restricted chemical range and are non-migmatitic. There are two varieties of leptynitic granitoids, one of which is interlayered with yet another S-type granite containing cordierite. The maximum recorded temperature from geothermometers is 780°C, but the magnitude of pressure is comparatively low, the highest value being 6.3 kbar. Another distinctive feature of the pressure-temperature record is the absence of evidence of decompression in the lower realms of pressure and temperature. Metamorphic reactions that could be identified indicate cooling, a noteworthy reaction being the sillimanite to andalusite transformation. Integration of data from pressure-temperature sensors suggest cooling at two pressures, 6 and 5 kbar. The generation of two types of granitoids from metapelites is interpreted to be due to intersection with solidus curves for pelitic and graywacke-like compositions, constrained by recent experiments, at 6 and 5 kbar. The first melting occurred on a prograde path while the second one was due to increase in temperature during exhumation at tectonic rates.

Thus inspite of a broad similarity in the geodynamic scenario across the northern part of the Eastern Ghat belt, differences in exhumation rates and in style of melting were responsible for producing different signatures in the Rayagada granulite terrane.

1. Introduction

The Eastern Ghats belt of the Indian Precambrian extends over a length of about 1500 km and is dominated by quartzofeldspathic and metapelitic granulites and granitoids. A broad commonality of structure and petrology is evident across the belt, but significant differences exist between several sectors. For a comprehensive understanding of the evolution of this large granulite terrane as well as of the Eastern Ghats belt, the differences in the signatures will have to be accounted for. In the last two decades details from several terrains within this belt have become available, though vital information on the ubiquitous granitoids

have been seriously lacking (Dasgupta *et al* 1994; Bhattacharya 1997). With a view to filling this gap, the present authors investigated the Chilka Lake granulites and advanced a scheme of evolution of the Eastern Ghats granulites on the basis of structure, petrology and geochemistry of the critical rock types (Bhattacharya *et al* 1994; Sen and Bhattacharya 1997). In a quest for developing an integrated picture of the evolution of the granulites and granitoids of the northern part of the Eastern Ghats belt, two more critical areas were selected for detailed study, one of them being around Rayagada in the north central part of the Eastern Ghats and the other around Jenapore in the northern sector (Kar *et al* 2000). This study

Keywords. Eastern Ghats granulites; cordierite granite; anatexis at two PT; exhumation rates.

reports several significant findings on the Rayagada rocks which warrant a more complex reconstruction of the evolution of at least this part of the belt.

In the following pages it will be shown that the Rayagada rocks possess several distinctive features. First, the deformation pattern is characterised by a prominence of F_2 folds, and a weak development of F_3 structures. Second, the peak pressures registered by the granulites are relatively low. Third, the last stages of the pressure-temperature record are best interpreted in terms of cooling rather than decompression. Fourth, two S-type granites of different composition, evidently produced by anatexis, occur, at places in an inter-layered fashion. Furthermore, one of the additional purposes of this communication is correcting and modifying some information and interpretation published by Shaw and Arima (1996, 1998) on this area.

2. Field relations and structure

Figure 1 shows the different rock types and the structures of the granulite terrain around Rayagada. It is evident from the map that the mesoscopic fold pattern is determined largely by the second deformation F_2 . The metapelitic granulites, including quartzites and calc-granulites and the charnockites-enderbitites are characterised by a pervasive gneissic foliation, S_1 , which defines the major F_2 folds. Many of the F_2 folds are isoclinal and occasionally overturned (figure 1). Unlike the two other sectors of the northern Eastern Ghats, e.g. Chilka Lake and Jenapore ($20^\circ 7'N$, $85^\circ 28'E$ and $20^\circ 51'N$, $86^\circ 2'E$ respectively), the impress of the F_1 and F_3 folds is muted. In the map published by Shaw and Arima (1996), a large area in the northwest has been shown to be occupied by leptynite and sillimanite-granite. Our investigations have revealed that the major rock type in these parts of the area are leptynites (garnetiferous granitoids) containing pods and bands of a cordierite-bearing granitoid (figure 2) that can be defined within narrow compositional limits. The maximum dimensions of the cordierite-bearing granitoids are about 2.0×0.25 m and occasional interbanding with leptynite on finer scales produce a migmatitic appearance (figure 3). The enclosing leptynites have a well-developed plättung texture resulting in a foliation corresponding to S_2 . The leptynite exposures trend parallel to the gneissic foliation S_1 in the adjacent khondalites (metapelitic gneisses with garnet and sillimanite). But interestingly the two foliations are distinctly at an angle (figure 4).

3. Petrography

Though the Rayagada area is dominated by metapelites and granitoids, a variety of rocks is present.

These are charnockite-enderbitites, basic granulites, calc-granulites, quartzites and porphyritic granites. Calc-granulites and quartzites form layers within the metapelites, and porphyritic granites are later intrusives, containing xenoliths of earlier rocks. In this paper the charnockite-enderbitites, basic granulites and porphyritic granites will not be covered in any detail; however, geothermometric and geobarometric results obtained from charnockites and basic granulites will be utilised.

The dominant metapelitic rocks of the area have the general assemblage garnet-sillimanite-quartz-alkali feldspar-ilmenite/magnetite (rarely rutile). Non-albitic plagioclase is absent, alkali feldspar varies in the range Or₇₇₋₈₉. Spinels, in some rocks Zn-rich, occur as inclusions as well as independent grains commonly associated with Fe-Ti oxides. A few metapelites have been found to have cordierite of a composition different from cordierites of granitoids (table 4).

There are no assemblages characteristic of Mg-Al rich granulites within the metapelites. These assemblages have been reported from several areas in the southern part of the Eastern Ghats belt, they are characterised by sapphirine, aluminous orthopyroxene and spinel (Dasgupta *et al* 1994; Sen *et al* 1995). Shaw and Arima (1996) reported corundum + quartz assemblages occurring in small lenses in metapelites of this area, the present authors could not confirm this finding. Small granules of corundum, associated with titaniferous magnetite and Fe-Al spinel are rarely present and are possibly products of oxidation of spinel to magnetite.

The dominant variety of granitoid (leptynite) present in this area is a gneiss with garnet-alkali feldspar-plagioclase-quartz-biotite-Fe-Ti oxides with high alkali feldspar : plagioclase ratio. These are leucocratic, medium to fine grained gneisses commonly with platy granoblastic textures. In some spots inclusions of charnockites within leptynites are common, but the overall structure is non-migmatitic. Sillimanite inclusions within garnets in leptynite are rare, but significant as described below.

The other variety of granitoid occurs as inclusions arranged in a layer-like fashion within leptynites. Petrographically, they are characterised by cordierite and substantial amounts of plagioclase. This variety of granitoid displays complex textures such as biotite-sillimanite intergrowths bordering cordierites and garnet-ilmenite symplectites. Biotites of two distinct compositions are present, and a mineral intermediate between cordierite and osumilite in composition occur as light brownish subhedral to anhedral grains. The latter are possibly alteration products of cordierites, or, less likely of osumilites. A very significant finding is the detection, by optical methods, of andalusite in three samples of cordierite-granites.

The calc-granulites have a general granoblastic texture on which compositional banding has been

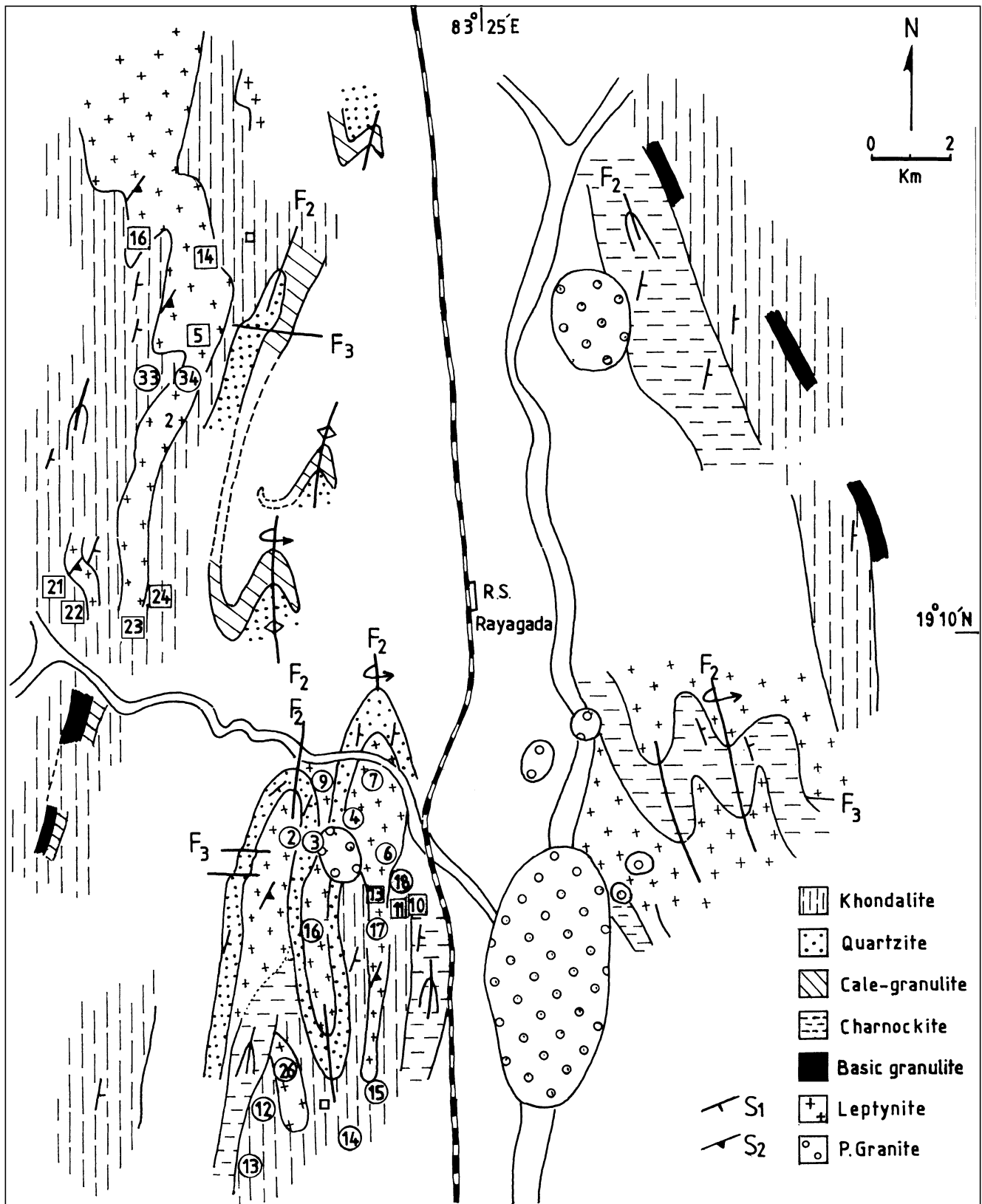


Figure 1. Geological map of the Rayagada area. P. Granite indicates porphyritic granite. For further details of structures see Bhattacharya (1997). Sample locations in numerals: encircled-R/95 series, enclosed within squares-R/97 series.

superimposed. The assemblage is diopside-plagioclase (an_{80-82})-scapolite(me_{80-83})-wollastonite-sphene-calcite \pm garnet (gr_{90}).

In the charnockite-enderbite group of rocks, which commonly form massive exposures, the mineral assemblage is hypersthene-plagioclase- alkali feldspar-

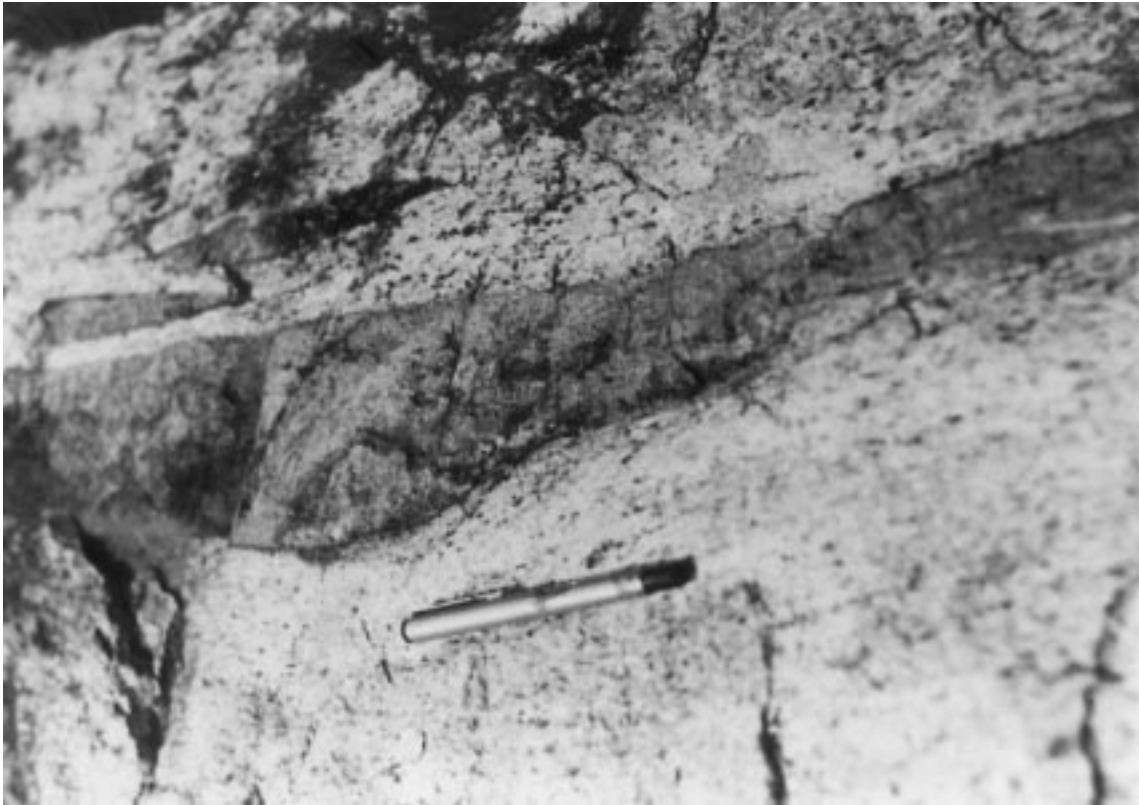


Figure 2. Dark cordierite-granite layers within leptynites (L-1); foliations in leptynite parallel to pen.

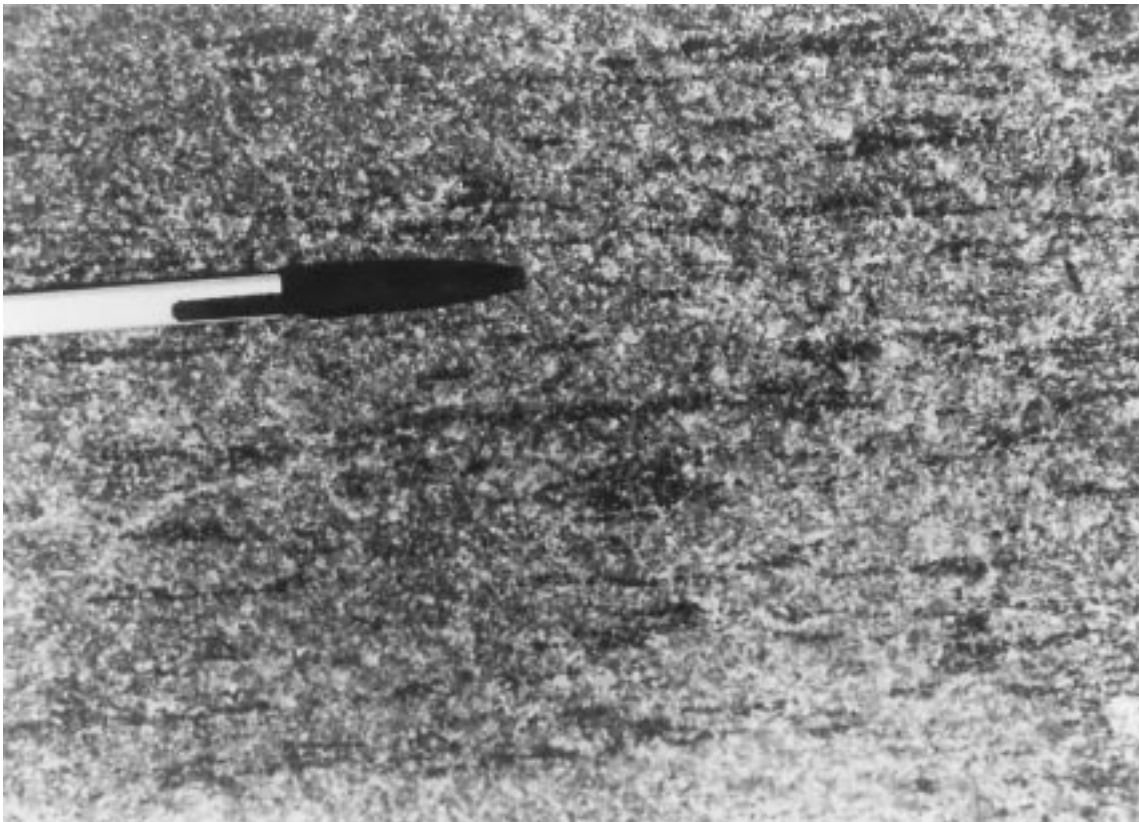


Figure 3. Fine scale interlayering, in a pseudo-migmatitic fashion, between cordierite-granites and leptynites.

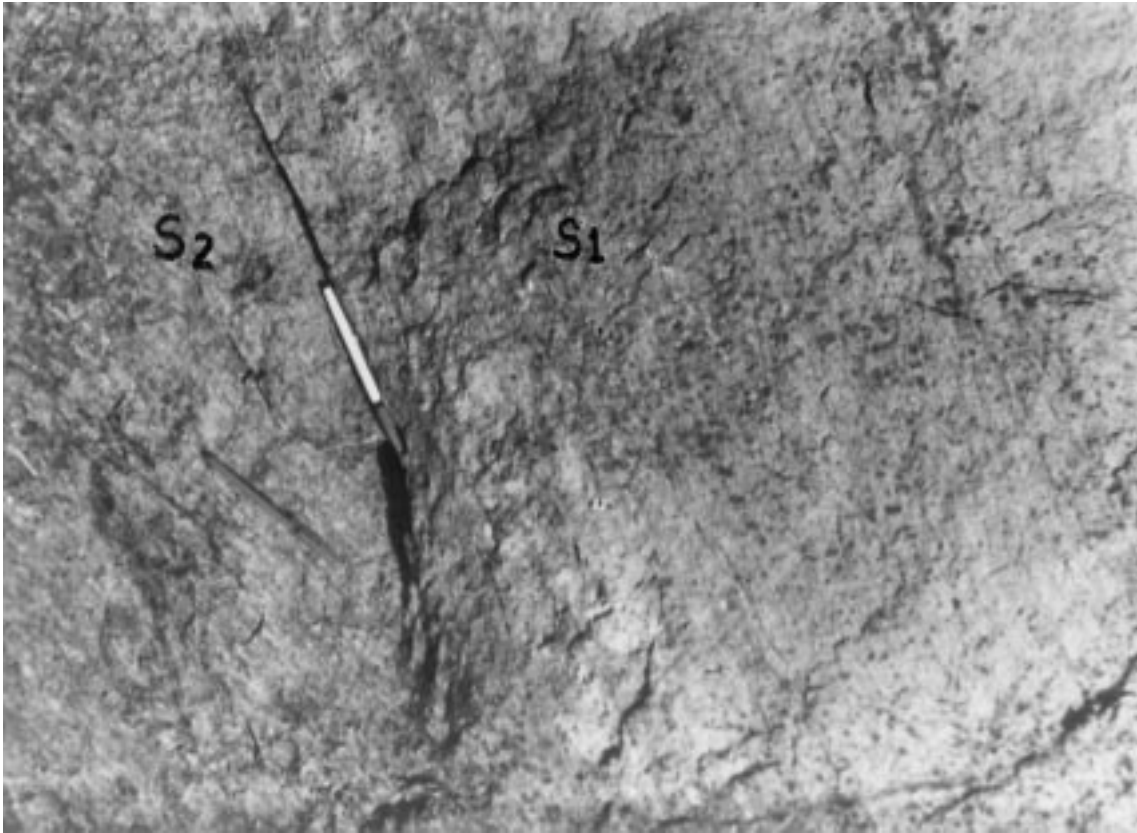


Figure 4. S_2 in leptynites (left) at an angle with S_1 in adjoining khondalites (right).

biotite- Fe-Ti oxides \pm garnet. Myrmekites and dactylitic intergrowths of garnet and quartz are common. The basic granulites which form small lenses and pods are of two varieties: hornblende-pyroxene granulites and two-pyroxene granulites. Two rather unusual features characterise the hornblende pyroxene granulites – the absence of orthopyroxene and presence of highly anorthitic plagioclase (an_{85-90}).

4. Mineral chemistry

Mineral phases from twenty-two rocks were analysed by EPMA with the dual purpose of constraining metamorphic reactions and estimating pressure-temperature values from mineral geothermometers and geobarometers. Sixty representative EPMA analyses of different silicates and oxides are presented in tables 1 to 8.

Garnet: All the garnets analysed are almandine-rich and poor in Ca and Mn with the grossularite and spessartine contents never exceeding 6 mole%. The pyrope contents range from 20 to 30 mole per cent approximately. In the garnets from khondalites pyrope varies from 18 to 31 per cent. In most of the cordierite-granites pyrope contents is within a narrow range, e.g. 27 ± 03 mole%. Garnets of different compositions have been found in one sample of cordierite-granite. The

analysis of garnet from a leptynite (table 1) was carried out by the SEM-EDAX method. There is no significant difference between core and rim compositions of the analysed garnets.

Cordierite: The cordierites are highly magnesian, those from the cordierite-granite are extremely close in X_{Mg} values, e.g. 0.82 to 0.84. Cordierite occurs rarely in the khondalites and has a lower X_{Mg} (0.75, table 2). The alkali contents, especially K is very low. No significant difference between core and rim compositions was detected.

Spinel: The X_{Mg} values of spinels in the present rocks vary from 0.24 to 0.48. Some of these spinels may contain up to 15 wt% of ZnO. Shaw and Arima (1996) subdivided spinel-bearing assemblages into Fe-rich and Fe-poor varieties and correlated the Fe concentration in spinel with the assemblages. On the basis of our analytical data this correlation can be questioned, because the range of X_{Mg} values in spinels of the two groups are practically the same. In several rocks spinel grains of different compositions have been encountered, examples of such disequilibrium compositions have been given in table 4.

Biotite: The biotites from both cordierite-granite and khondalite are dominantly magnesian and have high Ti contents. It is common to find biotites of two compositions in these rocks; out of these, those marked as biotite-1 in table 3 are less magnesian. They occur

Table 1. *Representative garnet compositions.*

Sample Point	R95/4 1	S-18 1	R97/10 1	R97/10 2	R97/5 1	R97/5 2	R95/18 1	R95/15A 1	R95/16A 1	S-22 1	R97/24 1	R97/24B 1	R97/21B 1	RS 51 1
Oxides														
SiO ₂	35.60	39.20	40.25	38.30	38.71	38.97	39.23	39.56	38.15	38.54	38.88	39.40	38.30	35.56
Al ₂ O ₃	22.05	21.83	20.14	21.14	19.52	20.20	21.36	20.89	21.38	21.86	20.62	20.64	21.14	18.52
FeO	35.61	32.34	30.81	33.26	31.75	30.12	31.54	30.64	29.31	28.15	28.88	29.74	33.26	35.31
MnO	1.37	0.72	0.86	0.66	0.75	1.01	1.25	1.72	2.19	2.09	2.77	1.61	0.66	1.30
MgO	4.74	6.19	7.22	6.39	6.42	8.42	6.19	6.82	7.43	7.82	7.17	8.39	6.39	4.65
CaO	1.18	0.33	1.40	1.36	1.67	1.73	1.95	1.60	1.43	1.45	1.60	1.41	1.36	1.83
Total	100.55	100.78	100.49	101.11	98.81	100.46	101.52	101.22	100.06	100.06	99.92	100.19	101.1	97.17
Formula unit on 12 oxygen basis														
Si	2.85	3.05	3.12	3.0	3.09	3.03	3.04	3.06	2.99	2.99	3.05	3.04	3.00	3.11
Al	2.09	1.99	1.84	1.95	1.83	1.85	1.95	1.91	1.97	2.00	1.90	1.88	1.95	1.91
Fe	2.39	2.10	2.00	2.18	2.12	1.96	2.04	1.98	1.92	1.83	1.89	1.92	2.18	2.11
Mg	0.59	0.72	0.84	0.75	0.76	0.98	0.71	0.79	0.87	0.91	0.84	0.96	0.75	0.61
Mn	0.09	0.05	0.06	0.04	0.05	0.07	0.08	0.11	0.15	0.14	0.18	0.11	0.04	0.10
Ca	0.10	0.03	0.10	0.11	0.14	0.14	0.16	0.13	0.12	0.12	0.13	0.12	0.11	0.17
Cation	8.10	7.95	7.96	8.03	8.00	8.04	7.99	7.99	8.07	7.99	8.00	8.02	8.03	8.01
X _{Mg}	0.18	0.26	0.28	0.24	0.25	0.31	0.24	0.26	0.28	0.30	0.28	0.31	0.24	0.20
I Metapelite						I	Cordierite-granite					I	LeptyniteI	

Table 2. *Representative biotite compositions.*

Sample no.	R95/16a	R95/16a	R95/34	R95/34	R97/22	R97/11
Grain type	1	2	1	2	1	2
Oxides %	Cordierite granite				Khondalite	
SiO ₂	35.63	34.87	34.64	35.94	35.27	36.44
Al ₂ O ₃	15.95	16.17	16.45	16.86	15.25	16.14
FeO	16.46	13.05	14.93	12.60	18.67	16.52
MgO	12.25	13.87	12.27	15.18	9.83	11.04
MnO	0.18	0.05	0.04	—	—	—
CaO	0.13	0.22	0.04	0.06	—	—
K ₂ O	9.46	9.57	9.61	9.65	9.74	9.67
Na ₂ O	—	0.35	0.27	0.22	—	—
TiO ₂	6.44	4.74	5.29	4.15	5.63	4.08
Total	96.53	92.90	93.53	94.66	94.39	93.89
Formula unit on 20 oxygen basis						
Si	4.83	4.85	4.83	4.87	4.95	5.06
Al	2.55	2.65	2.70	2.69	2.52	2.64
Fe	1.87	1.52	1.74	1.43	2.19	1.92
Mg	2.48	2.88	2.55	3.07	2.06	2.29
Mn	0.02	0.01	0.01	—	—	—
Ca	0.02	0.03	0.01	0.01	—	—
K	1.64	1.70	1.71	1.67	1.74	1.71
Na	—	0.09	0.07	0.06	—	—
Ti	0.66	0.49	0.55	0.42	0.59	0.43
Cation sum	14.07	14.22	14.17	14.22	14.05	14.05
X _{Mg}	0.57	0.65	0.59	0.68	0.53	0.60

Grain type 1 independent; and type 2 intergrown.

Table 3. *Representative cordierite composition.*

Sample no.	R95/16c	R95/34	R95/17b	R95/16a	R97/24b	S-18
Oxides %	Cordierite-granite				Khondalite	
SiO ₂	49.95	49.57	49.65	48.91	49.47	49.14
TiO ₂	0.01	<0.01	0.02	0.01	—	<0.01
Al ₂ O ₃	31.91	32.40	32.90	32.72	31.34	33.43
FeO	4.34	4.20	3.99	5.08	4.48	6.06
MnO	0.10	—	0.22	0.15	—	0.06
MgO	10.85	11.08	12.09	12.51	11.66	10.27
CaO	0.02	0.05	0.17	0.03	0.04	0.04
Na ₂ O	—	0.07	0.11	0.14	0.31	0.09
Total	96.98	97.38	99.15	99.54	97.34	99.09
Formula unit on 18 oxygen basis						
Si	5.07	5.05	4.98	4.92	5.06	4.97
Al	3.86	3.89	3.89	3.88	3.78	3.98
Fe	0.37	0.36	0.34	0.43	0.37	0.51
Mg	1.66	1.68	1.81	1.88	1.78	1.55
Mn	0.01	—	0.02	0.01	—	0.01
Ca	<0.01	0.01	0.02	—	—	<0.01
Na	—	0.01	0.02	0.02	0.06	0.01
Ti	—	—	—	—	—	—
Cation sum	10.99	11.01	11.08	11.12	11.08	11.05
X _{Mg}	0.82	0.82	0.84	0.83	0.83	0.75

either as inclusions within garnets or as independent grains not intergrown with sillimanite. Biotite-2 is richer in magnesium and poorer in Ti than biotite-1.

Feldspar: The chemical data on alkali feldspar is not reported here, but as mentioned earlier they are K-rich with the potassium component between Or₇₇₋₈₉. Plagioclase feldspars were not found in khondalites, and in leptynites the compositions, as determined

optically, straddle the boundary between oligoclase and andesine.

Chemical analyses of three plagioclase feldspars from cordierite-granite are presented in table 5.

Fe-Ti Oxides: Different oxide phases are observed in both khondalites and cordierite-granites, and we report here four analysed phases from five rock samples (table 6). Ilmenites have variable magnesium

Table 4. *Representative spinel compositions.*

Sample no.	R95/15a	R95/4	S-22	S-22	R95/17b	R95/34	R95/34
Grain	1	1	1	2	1	1	2
Oxides %							inclusion
TiO ₂	0.22	0.12	–	–	–	0.31	0.12
Al ₂ O ₃	61.91	57.37	60.68	61.94	62.11	59.58	61.15
FeO	22.94	33.94	16.70	22.97	16.20	24.36	28.00
MnO	0.14	0.13	0.49	0.15	–	0.46	0.39
MgO	7.01	6.11	6.78	6.35	8.47	6.68	7.19
ZnO	9.35	1.33	14.35	9.24	12.06	3.20	1.32
Total	100.94	99.09	99.10	100.68	98.96	95.01	98.59
Formula unit on 4 oxygen basis							
Al	2.14	1.93	2.01	2.01	2.02	2.01	1.99
Ti	0.01	<0.01	–	–	–	0.01	<0.01
Fe	0.51	0.81	0.39	0.53	0.37	0.58	0.65
Mg	0.29	0.26	0.28	0.26	0.35	0.29	0.30
Mn	<0.01	<0.01	0.01	<0.01	–	0.01	0.01
Zn	0.19	0.03	0.30	0.19	0.25	0.07	0.03
Cation Sum	2.99	3.03	3.00	2.99	2.99	2.98	2.99
X _{Mg}	0.36	0.24	0.42	0.33	0.48	0.33	0.31
		Cordierite-granite				Khondalite	

Table 5. *Representative plagioclase feldspar and quasi-osumilite/quasi-cordierite compositions.*

Sample no.	R95/17b	R97/21b	R97/24b	R95/16c	R95/16a	R95/16c	R95/16a
Oxides %	Plag	Plag	Plag	q-osu	q-osu	q-crd	q-crd
SiO ₂	54.18	60.29	58.20	50.28	43.62	50.28	43.62
Al ₂ O ₃	28.03	23.45	24.56	29.45	31.94	29.45	31.94
FeO	–	–	–	5.35	5.07	5.35	5.07
MgO	–	–	–	4.24	7.12	4.24	7.12
CaO	11.03	6.48	7.89	1.63	0.72	1.63	0.72
Na ₂ O	5.38	9.11	7.84	0.45	0.43	0.45	0.43
K ₂ O	0.13	0.15	0.12	0.62	1.68	0.62	1.68
Total	98.74	99.48	98.61	92.01	90.57	92.01	90.57
No. of oxygens	8	8	8	30	30	18	18
Si	2.48	2.71	2.65	9.09	8.14	5.45	4.88
Al IV	1.51	1.24	1.32	2.91	3.86	3.76	4.21
Al VI	–	–	–	3.36	3.16	–	–
Fe	–	–	–	0.81	0.79	0.49	0.47
Mg	–	–	–	1.14	1.98	0.69	1.19
Ca	0.54	0.31	0.38	0.31	0.14	0.19	0.09
Na	0.48	0.79	0.67	0.16	0.16	0.09	0.09
K	0.01	0.01	0.01	0.14	0.40	0.09	0.24
Cation sum	5.01	5.07	5.04	17.93	18.63	10.76	11.17
X _{An} /X _{Mg}	0.52	0.28	0.35	0.58	0.71	0.58	0.71

and manganese contents; magnetites are stoichiometric with Fe⁺²/Fe⁺³ nearly 0.5; rutile contains significant Fe⁺². Additionally, exsolution in Fe-Ti oxides is quite common; hemo-ilmenite is occasionally found as a separate phase.

“Quasi-Cordierite”: A mineral somewhat resembling cordierite was found in several cordierite-granite. They occur as light brownish, non-pleochroic, subhedral grains with low birefringence (~0.004). Under the microscope they appear to be heterogeneous with parts of the grains lamellar in habit. But SEM investigations did not reveal any chemical heterogeneity.

Two of the results of EPMA analysis of this mineral is given in table 5. The analytical data show that

chemically the mineral is intermediate between cordierite and osumilite. In terms of relative proportions, (Mg + Fe) is closer to osumilite than cordierite, while it is the opposite with Si and Al. The analytical totals leave a lot of room for H₂O and CO₂, but no significant amount of CO₂ was detected. H₂O of about 5% or more is not admissible in either cordierite or osumilite (Olsen and Bunch 1970). Ca contents are high, and the possibility of submicroscopic intergrowth of Ca-bearing phases like plagioclase was eliminated by SEM investigation. (Na + K) is high for cordierite and low for osumilite. The low amounts and fine grain size precluded identifying the mineral by high resolution physical methods like X-ray diffractometry. The best, though not satisfactory, interpretation that can

Table 6. *Representative compositions of Fe-Ti Oxides from metapelites.*

Sample no	R95/16A	R95/15A	R95/15A	R95/15A	R95/15A	R95/18	R95/18	R95/18	R95/18	R95/17B	R95/17B	S-22
Oxides %	Rutile	Ilmenite	Magnetite	Ilmenite	Magnetite	Ilmenite	Magnetite	Ilmenite	Magnetite	Ilmenite	Hemo-Ilm	Ilmenite
Al ₂ O ₃	0.24	0.04	0.34	—	0.44	0.003	0.42	—	0.26	0.09	0.02	0.05
TiO ₂	86.56	50.19	0.08	52.54	0.04	42.79	0.19	52.54	0.04	49.91	24.49	52.08
FeO	5.16	48.43	90.56	44.66	88.72	54.23	87.6	42.66	85.49	47.67	68.20	45.84
MnO	0.01	0.51	0.01	0.48	0.01	0.26	0.21	0.48	0.03	0.23	0.13	1.11
MgO	—	0.63	0.12	0.82	—	0.92	0.14	0.82	0.07	0.95	0.26	0.66
Total	91.97	99.81	91.10	98.50	89.21	98.3	88.56	96.50	85.89	98.85	93.10	99.74
Fe ⁺²	0.06	0.98	1.02	0.93	1.02	0.99	1.03	0.94	1.01	0.97	1.76	0.96
Fe ⁺³	0.004	0.04	1.96	0.02	1.94	0.1	1.93	0.01	1.89	0.03	1.24	0.01
Ti	0.93	0.95	0.002	0.99	0.01	0.81	0.01	0.96	—	0.95	0.97	0.99
Mg	—	0.02	—	0.05	—	0.03	0.01	0.04	0.02	0.04	0.02	0.03
Mn	—	0.01	0.01	0.01	—	0.01	0.01	0.02	0.01	0.004	0.05	0.02
Al	0.004	0.001	0.02	—	0.03	—	0.02	—	0.02	0.003	0.001	—
Cation sum	0.99	1.99	3.01	2.00	3.00	1.99	3.01	1.97	2.95	1.99	4.04	2.01

Table 7. *Coexisting Garnet-Orthopyroxene-Plagioclase composition.*

Sample no	R95/14C					R97/3				
	Grt core	Opx core	Grt rim	Opx rim	Plag core	Grt core	Opx core	Grt rim	Opx rim	Plag core
Mineral Oxides %										
SiO ₂	38.11	49.13	37.50	51.28	60.21	37.44	51.54	37.96	51.44	57.06
Al ₂ O ₃	19.88	1.08	19.52	0.58	22.55	20.05	0.44	20.05	0.40	24.39
FeO	34.87	36.20	33.56	34.51	–	30.50	32.92	29.74	32.59	–
MgO	3.54	13.06	3.74	13.91	–	3.82	14.84	4.09	15.45	–
MnO	1.05	0.31	1.10	0.33	–	2.28	0.93	2.48	0.97	–
CaO	3.30	0.41	3.60	0.32	6.12	5.32	0.64	5.27	0.59	8.57
Na ₂ O	–	0.01	–	–	8.84	–	0.06	–	–	7.04
K ₂ O	–	0.07	–	–	0.15	–	0.02	–	–	0.21
Total	100.74	100.38	99.03	100.95	97.88	99.41	101.38	97.49	101.44	97.22
	12(O)	6(O)	12(O)	6(O)	8(O)	12(O)	6(O)	12(O)	6(O)	8(O)
Si	3.04	1.96	3.04	2.00	2.74	3.04	1.99	3.08	1.99	2.63
Al	1.87	0.05	1.87	0.03	1.21	1.89	0.02	1.86	0.02	1.33
Fe	2.33	1.21	2.28	1.13	–	1.99	1.07	1.86	1.05	–
Mg	0.42	0.77	0.45	0.81	–	0.49	0.86	0.39	0.89	–
Mn	0.07	0.01	0.08	0.01	–	0.17	0.03	0.16	0.03	–
Ca	0.28	0.02	0.31	0.01	0.30	0.45	0.03	0.65	0.02	0.42
Na	–	–	–	–	0.78	–	–	–	–	0.63
K	–	–	–	–	0.01	–	–	–	–	0.01
Cation sum	8.02	4.02	8.03	3.99	5.05	8.02	4.00	7.99	4.00	5.03
X _{Mg}	0.13	0.39	0.14	0.42	X _{an} 0.28	0.16	0.45	0.13	0.46	X _{an} 0.40

Table 8. *Coexisting Pyroxene composition.*

Sample no	R97/2A		R97/17B		RN73	
	Opx	Cpx	Opx	Cpx	Opx(host)	Cpx(lamelle)
Mineral Oxides %						
SiO ₂	51.88	53.09	50.21	51.44	48.82	49.57
Al ₂ O ₃	0.73	1.42	0.67	1.10	0.45	0.93
FeO	25.02	7.86	28.15	9.35	37.09	17.54
MgO	19.75	13.83	19.02	12.46	9.83	8.15
MnO	0.83	0.23	0.66	0.23	1.03	0.47
CaO	0.48	23.05	0.57	23.19	1.15	20.28
Na ₂ O	0.03	0.12	0.05	0.19	0.04	0.25
K ₂ O	0.03	0.01	0.01	0.05	–	–
TiO ₂	0.18	0.27	0.18	0.42	0.12	0.08
Total	98.84	99.80	99.51	98.42	98.54	97.26
Formula unit on 6 oxygen basis						
Si	1.98	1.98	1.94	1.97	2.00	1.98
Al	0.03	0.06	0.03	0.05	0.02	0.04
Fe	0.80	0.25	0.91	0.30	1.27	0.59
Mg	1.13	0.77	1.10	0.71	0.60	0.49
Mn	0.03	0.01	0.02	0.01	0.04	0.02
Ca	0.02	0.92	0.02	0.95	0.05	0.87
Na	–	0.01	–	0.01	–	0.02
K	–	–	–	–	–	–
Ti	–	0.01	0.01	0.01	–	–
Cation sum	4.00	3.99	4.04	4.01	3.98	4.04
X _{Mg}	0.59	0.75	0.55	0.70	0.32	0.45

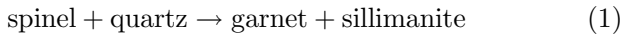
be offered on the basis of the data is that this is an alteration product of cordierite or osumilite. Alteration by simple hydration is unable to explain the chemistry irrespective of the starting material, so we suggest that the alteration could have been due to interaction between cordierite and granitic melt. The possibility that the mineral is the product of interac-

tion between osumilite and melt is discounted because the physical conditions were not favourable for the stability of osumilite (Carrington and Harley 1995a). We have styled the mineral as quasi-cordierite because it is, in its optical and chemical characters, “intermediate” between cordierite and osumilite and perhaps closer to cordierite.

5. Metamorphic reactions

When compared with the metamorphic reactions documented or suggested from the granulites of other areas of the Eastern Ghats, two features of Rayagada granulites stand out. First, cooling appears to be a common trigger for several metamorphic reactions recorded by the Rayagada rocks. Second, evidence for the decompression reaction (garnet + sillimanite + quartz \rightarrow cordierite) reported from a large number of granulite terrains within the Eastern Ghats is lacking here.

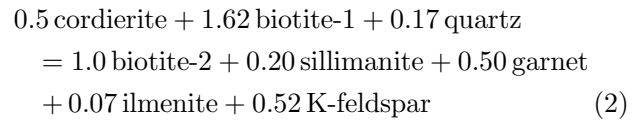
Garnet-sillimanite intergrowths separating spinel and quartz suggest that the following generalized reaction took place (figure 5):



Spinel and quartz grains are separated by garnets and larger grains of sillimanite in several metapelites pointing to the same reaction (figure 6). Though our sampling was extensive, no evidence for the reaction corundum + quartz \rightarrow sillimanite, reported by Shaw and Arima (1996) could be detected.

In cordierite-granites, a complex reaction involving biotites of two compositions offers the best explanation for the biotite-sillimanite intergrowths and garnet-ilmenite symplectites observed in these rocks. Figure 7 shows biotite-sillimanite intergrowths bordering cordierite grains with more magnesian biotite (biotite-2), while garnet-ilmenite symplectites are observed in the

same rock (figure 8). Using the compositions of the analysed phases, the following balanced reaction can be written (table 1 to 8):



Pereira and Bea (1994) proposed a reaction of this kind, but the chemical trends of biotites in their rocks were different. Cordierites in these granulites have virtually a constant composition ($X_{\text{Mg}} = 0.81$ to 0.83), we interpret this as the result of equilibrium between several Mg-Fe solid solutions in a reaction with high variance. This reaction is a cordierite “breakdown” reaction; interestingly there is no evidence for subsolidus formation of cordierite in these rocks.

The rare presence of andalusite in some cordierite-granites appears to be due to the polymorphic transition:



Figure 9 shows andalusite possibly pseudomorphing sillimanite. In the same rock andalusite’s presence was suspected within mats of sillimanite, but owing to the very small size of the grains, it could not be confirmed beyond doubt.

Among charnockite-enderbites and basic granulites two sets of mineral reactions are noteworthy. The first is the garnet forming reaction observed commonly in

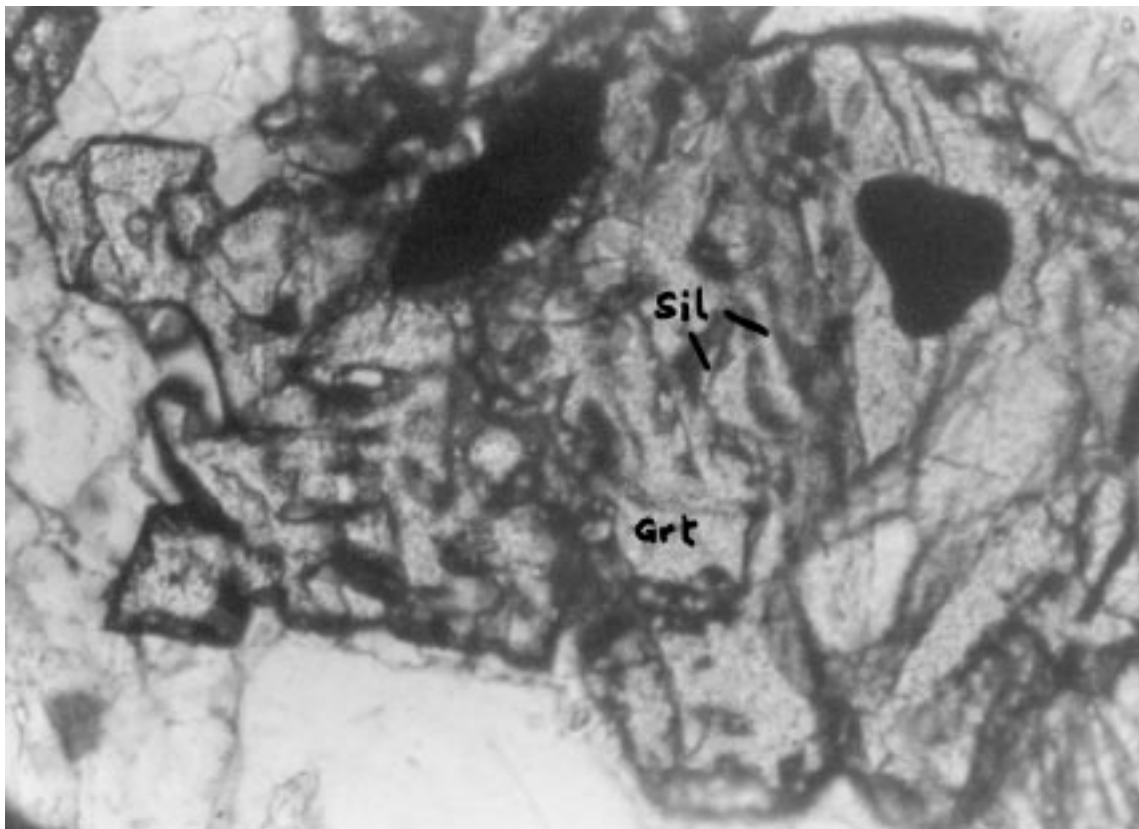


Figure 5. Photomicrograph showing sillimanite intergrowths with garnet in an almost dactylic manner. X:120.

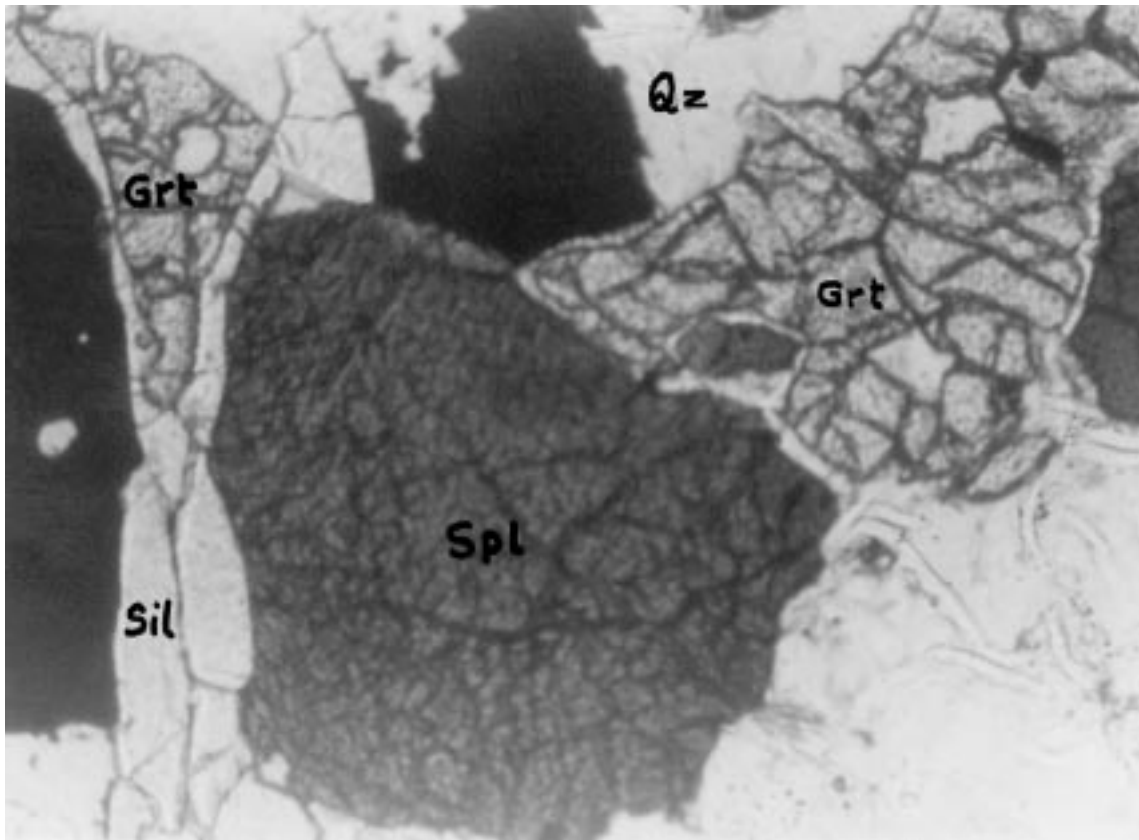


Figure 6. Photomicrograph showing spinel and quartz separated by garnet and sillimanite grains. X:120.

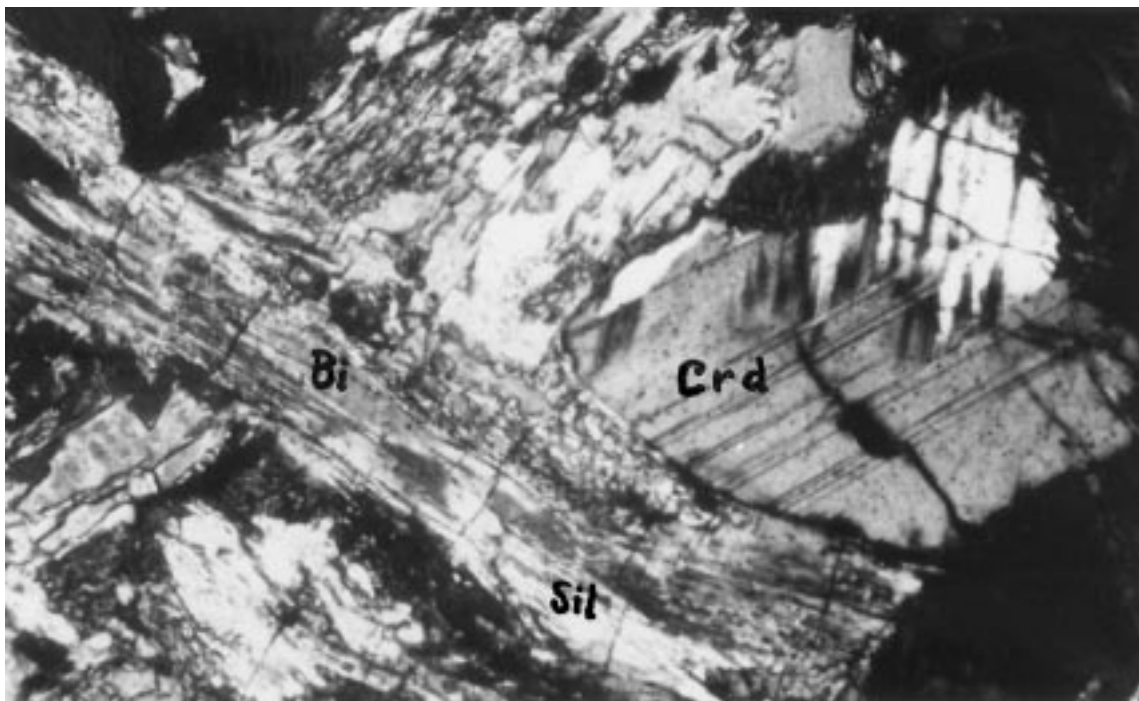


Figure 7. Photomicrograph showing biotite-sillimanite intergrowths bordering cordierite. X:120.

the Eastern Ghats granulite suite, i.e.
 orthopyroxene + plagioclase \rightarrow garnet
 + calcic pyroxene + quartz

(4)

The second one is an exsolution reaction suggested by the presence of calcic pyroxene lamellae within orthopyroxene grains. Exsolution textures are also displayed by spinels in metapelitic rocks.

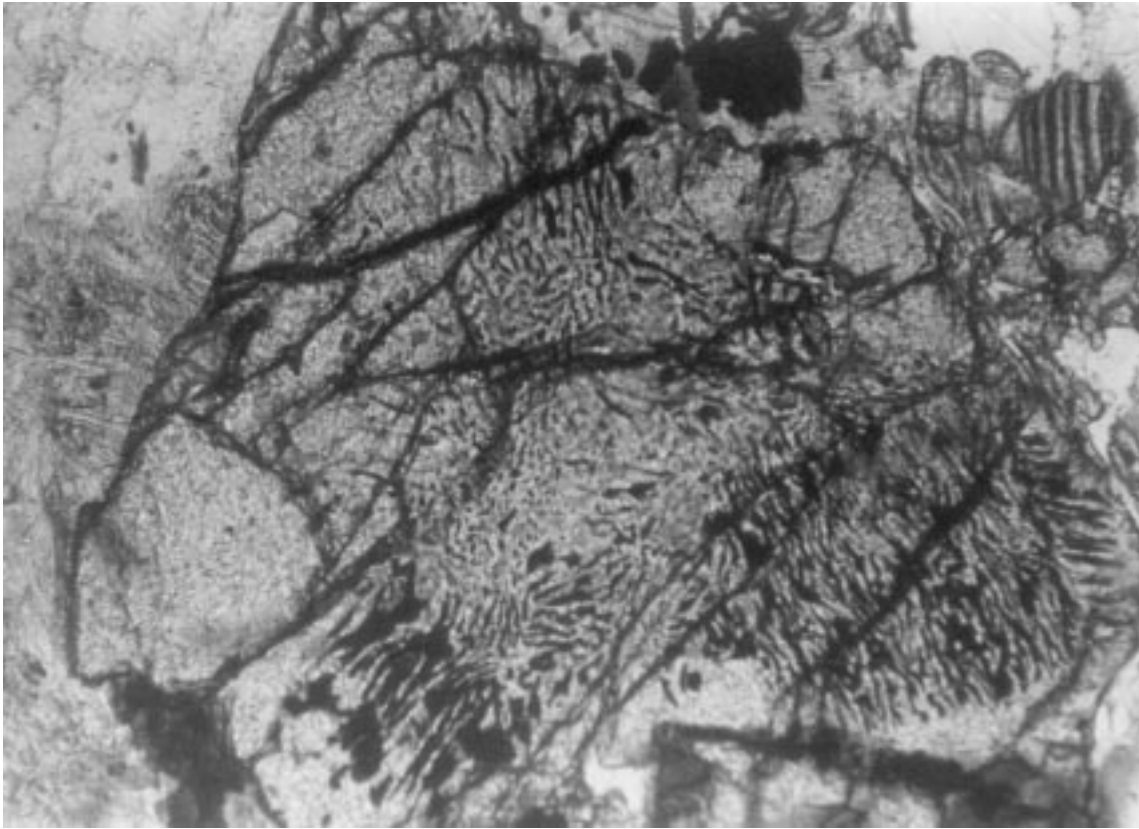


Figure 8. Photomicrograph showing garnet-ilmenite symplectites. X:120.

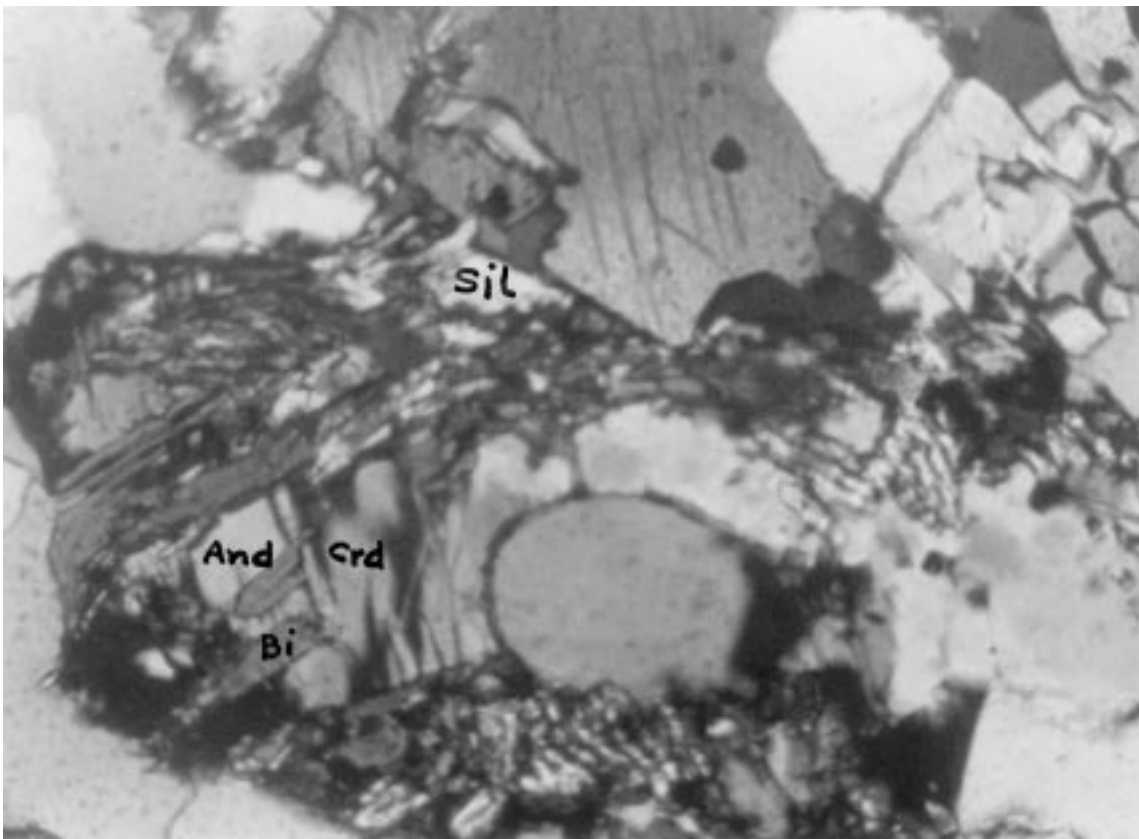


Figure 9. Photomicrograph showing andalusite, probably pseudomorphing sillimanite in a cordierite-granite. X:120.

The common explanation for reactions (1), (3) and (4) is that they were triggered by cooling. Reactions (1) and (4) can also be driven by increasing pressure for which there is no evidence. Sillimanite to andalusite transformation, because of the negative slope in P-T space, could be caused by decrease of pressure or temperature. Here we argue that cooling was the major control. The exsolution reactions also suggest cooling. The slope of reaction (2) is difficult to estimate, but it is a "retrograde" type reaction that could again indicate cooling.

6. Rock chemistry

The results of the chemical analysis of thirtysix rocks chosen from the metapelite suite and granitoids are presented in tables 9 to 11. In addition, several charnockite-enderbites and basic granulites have also been analysed, and the results will be discussed in a separate communication.

The metapelitic suite, which is often treated as a stratigraphic unit, consists of khondalites (garnet-sillimanite gneisses), quartzites and calc-granulites. The dominant variety among these are the khondalites, but rocks intermediate between quartzites and khondalites also occur. Table 9 shows the chemical analyses of three such rocks and of two calc-granulites. The high Al_2O_3 and K_2O contents of the calc-granulites suggest that the parent sedimentary rocks were marly in nature. The khondalites do not show a wide range of variation with respect to major elements. The range of variation of alkalis, and especially of Na_2O tends to be wider (figure 10, table 9). The $\text{Mg}/(\text{Mg} + \text{Fe})$ ratios have a moderate spread.

Two broad types of granitoids, characterised by the presence or absence of cordierite, are present in the area. Both of these are S-type granites. In normative composition the majority of these rocks correspond to granites and the rest are adamellites or alkali granites, one sample strays into the trondhjemite field (figure 11). Two types of granitoids overlap in Niggli c-al-alk plot (figure 12), but they are well separated in Niggli al-alk-fm (figure 13). Figures 13 and 14 also bring out the major differences between the khondalites and the S-type granites.

Among the cordierite-free granitoids two subgroups can be distinguished. In the field one of them contains layers of cordierite-bearing granites while the other is a homogeneous leptynite. The difference between these two is significant, they can be sharply demarcated in terms of proportions of normative quartz-albite-orthoclase. The variation in the A/CNK values, which is a measure of degree of internal differentiation, is as follows. In the leptynites not associated with inter-layered cordierite-granite (L-2), these values have a narrow range, 1.11 to 1.24; in the leptynite (L-1) which contain layers of cordierite-granite inclusions the values

are 0.93 to 1.06, with one aberrant value of 1.61 caused by very low Na_2O concentration. In the cordierite-granites the range is wider, namely, 1.13 to 1.59.

7. Pressure-temperature record

The thermometric and barometric estimates from the chemical compositions of mineral pairs and mineral assemblages are presented in table 12. The pressure-temperature values derived from spinel-cordierite and spinel-garnet sensors are deemed to be less dependable because of uncertainties attaching to activity-composition relations in spinels and of substantial garnite contents of several spinels.

The highest temperatures recorded, 850° to 900°C , are from two-pyroxene thermometry in basic granulites (table 12). This could represent igneous temperatures that have been partially reset. The range of temperature obtained from charnockites, metapelites and cordierite-granites is 600° to 780°C . Note that the pressure-temperature values from charnockites were derived by the intersection of Fe- and Mg-versions of GAPQ barometer and garnet-orthopyroxene exchange thermometer. The array of P-T values indicates a cooling, at about 6 kbar pressure, of 700° to 630°C in charnockites and 780° to 720°C in metapelites. There is a suggestion that in metapelites and cordierite-granites the cooling could have proceeded to 680°C . Another cooling signature at a lower pressure (5 kbar) is evident from the data in table 12. In cordierite-granites cooling from 750° to 700°C is evident, whereas some charnockites could have cooled to approximately 600°C .

The most outstanding feature of the pressure record is that there is no value above 6.3 kbar. This is in sharp contrast to two other areas in the northern Eastern Ghats investigated by the authors (Chilka Lake and Jenapore). Furthermore, it is significant that two sets of pressure values, one around 6 kbar and the other around 5 kbar are registered in three different lithological groups, e.g., charnockites, metapelites and cordierite-granites.

In this connection the pressure value of 12 kbar suggested by Shaw and Arima (1998) appears to be questionable. This pressure was estimated from corundum bearing assemblages, we suggest that corundum is metastable here or derived by later oxidation. Furthermore, the basis of the cooling path derived by Shaw and Arima (1996) can also be questioned. A part of the retrograde path of these authors was derived from the reaction $\text{spinel} + \text{quartz} \rightarrow \text{garnet} + \text{sillimanite}$ in the Mg-poor and Mg-rich assemblages. From the details given in their paper it is clear that the Mg-rich assemblages are nothing but cordierite-granites which do not show any evidence in support of this reaction.

The P-T values and some of the mineral reactions relevant to P-T estimation have been plotted in figure 15.

Table 9. *Bulk compositions of metapelites and calc-granulites.*

Sample no Oxides %	R95/14a	R95/17b	R95/18	R95/33	R97/10	R97/11	R97/20	R97/23a	R95/3	R95/17a	R97/5a	R95/20	R97/8
SiO ₂	66.64	69.96	64.88	67.27	59.65	73.6	76.45	69.43	84.16	81.79	83.48	59.57	53.91
TiO ₂	1.30	0.59	0.73	1.20	1.30	1.41	0.87	0.71	0.69	0.78	0.62	0.46	0.26
Al ₂ O ₃	18.00	13.60	20.56	16.45	20.85	13.23	12.78	13.93	7.18	8.46	8.04	11.18	6.94
Fe ₂ O ₃	9.76	5.77	6.68	10.29	10.48	6.47	5.83	5.47	5.31	5.53	6.07	3.65	2.60
MnO	0.17	0.08	0.15	0.21	0.18	0.08	0.12	0.15	0.03	0.04	0.14	0.19	0.23
MgO	1.31	0.53	0.65	1.77	1.87	1.35	0.35	1.11	0.1	0.1	0.15	1.94	1.06
CaO	0.36	1.83	1.18	0.52	0.36	0.15	0.21	1.40	0.24	0.25	0.05	20.99	29.27
Na ₂ O	0.10	0.74	0.14	0.1	0.77	1.72	1.34	3.00	0.10	0.10	1.19	0.21	0.25
K ₂ O	0.97	4.35	3.25	1.32	3.25	2.12	2.17	4.37	0.61	0.68	0.41	1.55	2.42
P ₂ O ₅	0.01	0.18	0.03	0.03	0.04	0.01	0.01	0.16	0.01	0.01	0.01	0.33	0.11
LOI	1.60	1.80	1.30	1.00	1.10	0.90	0.90	0.60	2.00	2.30	1.00	0.30	3.00
Total	100.22	99.43	99.55	100.16	99.85	101.04	101.06	100.33	100.43	99.99	101.10	100.37	100.05
Mg. no.	35	27	28	41	42	45	20	45	7	7	9		
CIPW norm													
Q	59.65	44.8	48.21	52.95	39.29	53.29	59.41	31.05	80.61	77.95	74.69	22.10	8.10
Or	5.73	25.71	19.21	7.80	19.21	12.53	12.82	25.83	3.60	4.02	2.42	9.16	14.30
An	1.72	7.90	5.66	2.43	1.52	0.60	0.98	5.90	1.13	1.17	0.18	1.78	2.12
Ab	0.85	6.26	1.18	0.85	6.52	14.39	11.34	25.39	0.85	0.85	10.07	24.99	10.67
Hyp	3.26	1.32	1.00	4.41	4.66	3.36	0.87	2.76	0.25	0.25	0.37	di 10.42	di 5.69
C	16.16	4.28	14.74	13.96	15.51	7.89	7.87	2.10	5.94	7.13	5.57	wo 26.20	wo 52.82
Il	0.36	0.17	0.32	0.45	0.39	0.17	0.26	0.32	0.06	0.09	0.30	0.41	0.49
Hem	9.76	5.77	6.68	10.29	10.48	6.47	5.83	5.47	5.31	5.53	6.07	3.65	2.6
Apat	0.02	0.42	0.07	0.07	0.09	0.02	0.02	0.37	0.02	0.02	0.02	0.76	0.25
Rut	1.11	0.50	0.56	0.96	1.10	1.32	0.73	0.54	0.61	0.73	0.46	0.60	—
Trace elements in ppm													
Ba	273	1748	1282	427	766	689	740	1142	255	304	191	740	
Rb	34	77	112	15	82	39	47	97	3	7	3	47	
Sr	18	124	56	43	87	691	67	225	18	16	11	67	
Co	100	129	87	120	97	92	85	82	114	95	79	8	
Ni	28	7	21	64	45	52	3	3	11	3	7	3	
Zn	105	97	128	64	57	121	37	57	24	76	29	37	
Y	56	30	50	63	65	23	44	38	24	23	37	44	

Deformation, P-T, and anatectic in Rayagada, E. Ghats

Table 10. Bulk compositions of leptynites.

Sample no. Oxides %	R95/6 L-1	R95/7 L-1	R95/26 L-1	RN35 L-1	RN37 L-1	RS28 L-1	RS51 L-1	RS297 L-1	R97/2 L-2	R97/13 L-2	R97/14a L-2	R97/14b L-2	R97/16a L-2	R97/22 L-2
SiO ₂	72.80	71.67	75.66	75.39	74.55	74.72	76.20	75.77	74.22	75.29	75.01	73.86	73.45	70.01
TiO ₂	0.27	0.35	0.14	0.10	0.10	0.11	0.10	0.14	0.11	0.05	0.30	0.27	0.14	0.63
Al ₂ O ₃	13.71	14.32	12.74	12.71	13.04	13.71	12.60	12.48	13.60	12.97	15.33	13.88	14.04	13.71
Fe ₂ O ₃	2.45	2.88	1.57	0.84	0.91	1.37	0.78	1.37	2.00	1.16	0.18	2.22	2.20	5.89
MnO	0.07	0.05	0.06	0.04	0.04	0.05	0.03	0.03	0.03	0.06	0.01	0.06	0.08	0.15
MgO	0.16	0.31	0.10	0.10	0.10	0.10	0.10	0.10	0.23	0.15	0.15	0.21	0.34	0.77
CaO	2.00	2.47	1.10	1.34	0.87	1.60	1.22	1.07	1.53	1.05	2.74	2.01	1.60	1.54
Na ₂ O	1.91	2.29	1.94	1.64	1.92	1.48	1.64	1.72	4.40	0.69	4.80	3.72	3.32	3.37
K ₂ O	4.09	3.81	4.99	5.50	6.08	5.73	5.58	5.28	4.17	4.63	2.51	3.80	4.50	3.76
P ₂ O ₅	0.03	0.07	0.01	0.02	0.02	0.04	0.02	0.01	0.06	0.02	0.01	0.09	0.08	0.14
LOI	2.10	1.40	1.20	1.00	1.30	1.01	1.40	1.50	0.70	0.50	0.40	0.30	0.50	0.50
Total	99.59	99.62	99.51	98.68	98.93	100.01	99.67	99.47	100.05	99.57	101.44	100.42	100.25	100.47
Mg. no	21	30	20	32	12	23	34	23	32	34	77	27	38	34
CIPW norm														
Q	41.60	38.21	42.80	41.84	38.15	40.72	42.60	43.14	29.68	33.69	31.56	33.31	33.21	31.96
Or	24.17	22.52	29.49	32.50	35.93	33.86	32.98	31.20	24.64	27.36	14.83	22.46	26.59	22.22
An	9.73	11.80	5.39	6.52	4.19	7.68	5.92	5.24	5.04	5.08	12.87	9.38	7.42	6.73
Ab	16.16	19.38	16.42	13.88	16.25	12.52	13.88	14.55	37.23	31.22	40.62	31.48	28.09	28.52
Hyp	0.90	0.77	0.25	0.25	0.25	0.25	0.25	0.25	1.24	0.37	0.37	0.52	0.99	1.63
C	2.58	2.11	2.17	1.67	1.77	2.26	1.69	2.01	0.13	0.03	0.00	0.21	0.85	1.92
Il	0.15	0.11	0.13	0.09	0.09	0.11	0.06	0.06	0.06	0.09	0.02	0.13	0.17	0.32
Hem	2.45	2.88	1.57	0.84	0.91	1.37	0.78	1.37	2.00	1.12	0.18	2.02	2.20	5.89
Apat	0.07	0.16	0.02	0.05	0.05	0.09	0.05	0.02	0.14	0.05	0.02	0.21	0.19	0.32
Rut	0.19	0.29	0.07	0.05	0.05	0.05	0.07	0.11	0.19	0.05	0.10	0.20	0.05	0.46
Trace elements in ppm														
Ba	962	1034	238	1347	767	1755	141	320	765	265	172	1214	753	1082
Rb	156	99	220	174	172	168	168	182	99	154	67	125	128	87
Sr	147	220	62	217	124	230	60	60	154	165	99	146	131	176
Co	71	66	95	149	91	79	43	103	58	74	59	41	70	84
Ni	5	6	3	3	6	3	3	5	3	3	3	3	5	5
Zn	3	36	19	3	4	3	6	12	35	8	5	21	16	71
Y	31	20	54	26	38	31	35	43	18	45	13	41	51	32
Zr	128	167	87	70	58	68	68	118	132	62	88	189	119	260

Table 11. Bulk compositions of cordierite-granites.

Sample no. Oxides %	R95/13	R95/15A	R95/16C	R95/16D	R97/5	R97/21B	R97/23	R97/24B
SiO ₂	69.68	61.40	69.48	68.29	74.28	68.00	69.88	70.04
TiO ₂	0.57	1.13	0.74	0.79	0.40	0.78	0.70	0.87
Al ₂ O ₃	14.20	16.59	14.52	14.34	13.49	14.00	13.63	14.74
Fe ₂ O ₃	5.92	10.30	6.29	7.00	3.71	7.01	6.02	4.28
MnO	0.07	0.12	0.08	0.13	0.04	0.13	0.14	0.07
MgO	0.16	0.56	0.41	0.63	0.60	0.90	0.83	1.40
CaO	1.64	2.64	2.83	2.30	2.06	1.46	1.38	1.30
Na ₂ O	0.37	2.35	1.86	1.36	2.94	2.89	3.06	2.42
K ₂ O	4.91	3.56	3.16	3.85	2.62	4.41	4.19	4.66
P ₂ O ₅	0.17	0.17	0.07	0.19	0.10	0.14	0.12	0.01
LOI	1.90	1.20	0.20	1.20	0.80	0.60	0.60	0.80
Total	99.59	100.02	99.64	100.08	101.04	100.32	100.55	100.59
Mg. no	10	18	21	26	39	34	35	57
CIPW norm								
Q	45.46	28.09	40.09	40.31	42.12	30.24	32.19	33.28
Or	29.02	21.04	18.67	22.75	15.48	26.06	24.76	27.54
An	7.03	11.99	13.58	10.17	9.57	6.33	6.06	6.38
Ab	3.13	19.89	15.74	11.51	24.88	24.45	25.89	20.48
Hyp	0.40	1.39	1.02	1.57	1.49	2.24	2.07	3.49
C	5.70	4.48	3.06	4.21	2.31	2.15	1.84	3.38
Il	0.15	0.26	0.17	0.28	0.09	0.28	0.30	0.15
Hem	5.92	10.30	6.29	7.00	3.71	7.01	6.02	4.28
Apat	0.39	0.39	0.16	0.44	0.23	0.32	0.28	0.02
Rut	0.49	0.99	0.65	0.64	0.35	0.63	0.54	0.79
Trace elements in ppm								
Ba	1428	1045	1003	1167	1206	1250	993	1417
Rb	171	95	66	100	61	113	99	120
Sr	98	173	170	155	142	144	183	168
Co	3	87	118	106	91	76	94	75
Ni	9	16	16	9	3	11	3	17
Zn	125	150	87	91	141	111	85	68
Y	27	34	17	16	17	36	41	18
Zr	383	392	281	307	235	302	263	168

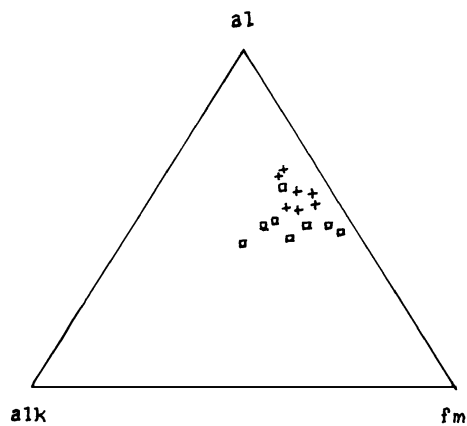


Figure 10. Comparative al-alk-fm plots for Rayagada metapelites (squares) and group-A metapelites of Chilka Lake (crosses).

8. Discussion

From the viewpoint of the major issues of this paper a convenient starting point is a comparison with the other investigated areas of the northern Eastern Ghats.

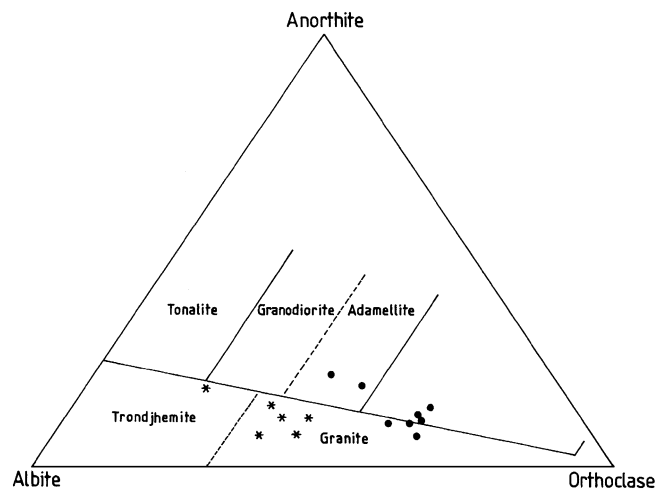


Figure 11. Normative plots of granitoids. L-1 leptynites (interlayered with cordierite-granites) denoted by solid dots, L-2 by asterisks.

There is a broad similarity in the lithological spread (charnockite–khondalite–granitoid trinity), and a commonality in the structural set up. Neither is there any structural or geochemical evidence which suggests

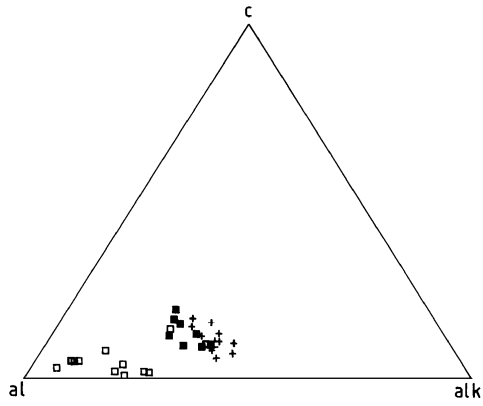


Figure 12. c-alk plots for Rayagada khondalites (squares), cordierite-granites (filled squares) and leptynites (crosses).

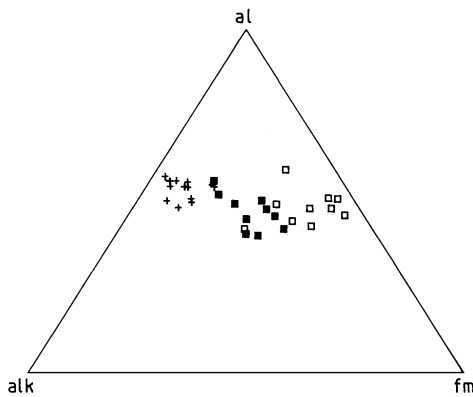


Figure 13. al-alk-fm plots for Rayagada granitoids and khondalites; symbols as in figure 12.

assembly of diverse terrains. Thus it is necessary as well as instructive to consider the findings on the Rayagada rocks against those on the Chilka Lake and Jenapore rocks.

The Chilka Lake and Jenapore granulites record a high temperature and moderately high pressure values: 1000°C, 9 kbar and 950°C, 9.5 kbar respectively (Sen *et al* 1995; Kar *et al* 2000). In the Chilka Lake area this high P-T record is retrieved from Mg-Al-rich granulites of broadly metapelitic composition, a variety not present in Rayagada. In Jenapore the peak P-T values are retrieved from mafic granulites and massif-type charnockites. It is important to note that in both these areas this high temperature metamorphism corresponds to F_1 folding. In Rayagada the effects of F_1 folding appear to have been largely erased. Again, the cooling at ~ 8 kbar pressure registered in both Chilka Lake and Jenapore rocks has no counterpart in the Rayagada granulites.

The maximum pressure registered by the Rayagada rocks is 6.3 kbar, this corresponds to the syn- F_2 tectonothermal event. Similar pressures, broadly corresponding to F_2 have been recorded both at Chilka and Jenapore. The major petrological response in all three areas was melting in metapelitic rocks, producing leptynites. In Rayagada the close association of the leptynites and khondalites and the presence of sillimanite inclusions in several garnets of leptynites indicate that the granitoids were derived by partial melting of metapelites (cf. Sen and Bhattacharya 1997). Additionally, there is a prominent record of cooling at 6 kbar in Rayagada as well as Chilka. The record is similar in Jenapore (Kar *et al* 2000).

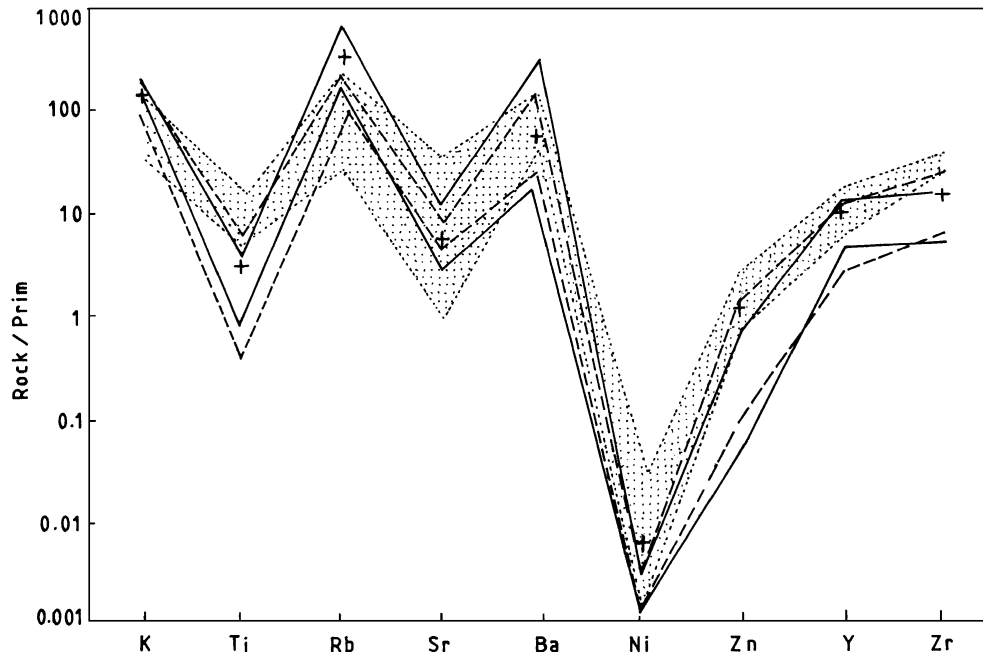


Figure 14. Multi-element plots for khondalites and granitoids of Rayagada. Envelopes for khondalites – stippled; for L-1 – enclosed within bold lines; for L-2 – enclosed within dashed lines. Concentrations for average S-type granites (Chappell and White 1992) denoted by crosses.

Table 12. Pressure-Temperature estimates from Rayagada.

Mineral assemblage					
Grt-Sil-Il-Ru-Q (Berman, 1991)*	<u>95/18</u> 6 kbar (800°C)	<u>S-22</u> 5.2 kbar (800°C)			
Grt-Sil-Plag-Q (Berman, 1991)*	<u>97/21b</u> 5 kbar (700°C)	<u>97/24b</u> 5 kbar (700°C)			
Il-Mgt (Powell & Powell 1977)*	<u>95/18</u> 780°C	<u>95/18</u> 720°C	<u>95/15a</u> 700°C	<u>95/15a</u> 680°C	<u>S-22</u> 690°C
Spl-Crd (Perchuk & Gerya 1989)*	<u>95/17b</u> 700°C, (6 kb)	<u>95/34</u> 650°C, (6 kb)			
Grt-Spl (Perchuk & Gerya 1989)*	<u>95/15a</u> 550°C, (6 kb)	<u>95/4</u> 560°C, (6 kb)			
Grt-Crd (Berman 1991)*	<u>S-18</u> 750°C, (5 kb)	<u>95/16c</u> 700°C, (5 kb)	<u>97/24b</u> 700°C, (5 kb)		
Grt-Opx-Plag-Q (Berman 1991)*	<u>97/3 (core)</u> 700°C, 6.3 kbar	<u>97/3 (rim)</u> 630°C, 5.8 kbar	<u>97/14c (core)</u> 610°C, 5 kbar	<u>97/14c (rim)</u> 590°C, 4.7 kbar	
Fe-Mg-Ca Pyroxenes (Berman 1991)*	<u>97/17B</u> 850°C	<u>RN 73</u> 900°C			

* Geothermometric and geobarometric methods adopted

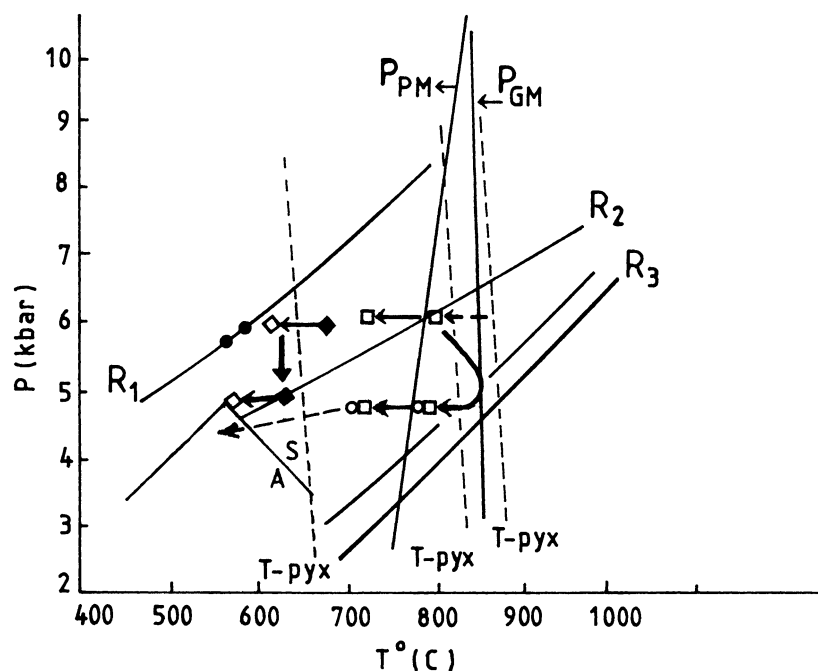


Figure 15. Pressure-temperature diagram for the Rayagada rocks. R_1 , R_2 and R_3 (2 samples) represent computed geobarometric equations corresponding to reactions 1, GRAIL and GASP respectively. The three dotted lines marked T-pyx denote temperatures from two-pyroxene thermometry in basic granulites. P_{PM} and P_{GM} are melting curves for pelites and graywackes taken from Stevens *et al* (1997). P-T values derived from analysed samples: open circles (garnet-cordierite), open squares (ilmenite-magnetite), solid circles (garnet-spinel), solid diamonds (core temperatures from orthopyroxene-garnet), open diamonds (rim temperatures from orthopyroxene-garnet). Arrows represent the projected cooling paths at 6 and 5 kbar. Stability fields for Al_2O_5 polymorphs, after Holland and Powell (1990).

Table 13. *Two way analysis of variance (ANOVA).*

Source of variation	Sum of squares	Degrees of freedom	Mean squares	F-Tests
Among Samples	0.12	7	0.017	0.0366
Leptynites-1				
Among treatments	38999.02	10	3899.02	
Error	32.53	70	0.465	
Total variation	39031.67	87		
Among Samples	1.40	5	0.279	0.2573
Leptynites-2				
Among treatments	28453.22	10	2845.323	
Error	54.24	50	1.085	
Total variation	28508.86	65		
Among Samples	0.23	7	0.033	0.0072
Khondalites				
Among treatments	32874.63	10	3287.462	
Error	323.69	70	4.624	
Total variation	33198.55	87		
Among Samples	0.17	8	0.021	0.0095
Cordierite-granite				
Among treatment	37623.80	10	3762.38	
Error	180.69	80	2.259	
Total variation	37804.67	98		

Table 14. *Computations relevant to mixing of khondalites and granitoids.*

Oxides	Khondalites Mean (8)	S.D	Leptynites (L1) Mean (8)	S.D.	Leptynites (L2) Mean (6)	S.D.	Cordierite-granite Mean (9)	S.D.
SiO ₂	68.49	4.86	74.59	1.48	73.64	1.74	69.47	3.56
TiO ₂	1.01	0.30	0.16	0.09	0.25	0.19	0.72	0.21
Al ₂ O ₃	16.18	3.09	13.16	0.62	13.92	0.71	14.37	0.87
Fe ₂ O ₃	7.59	2.04	1.52	0.72	2.28	1.77	5.90	2.12
MnO	0.14	0.04	0.05	0.01	0.07	0.04	0.09	0.04
MgO	1.12	0.53	0.13	0.07	0.31	0.21	0.62	0.37
CaO	0.75	0.59	1.46	0.50	1.75	0.52	1.87	0.57
Na ₂ O	0.99	0.94	1.82	0.23	3.38	1.31	2.03	0.89
K ₂ O	2.73	1.20	5.13	0.75	3.89	0.70	4.04	0.77
P ₂ O ₅	0.06	0.06	0.03	0.02	0.07	0.04	0.13	0.06
LOI	1.15	0.37	1.38	0.31	0.48	0.12	0.94	0.46

Oxides	Alternative 1		Alternative 2		Computed Protoliths		Experimental Protoliths	
	80% L1 + 20% crd- granite	85% L1 + 15% crd- granite	Leptynites-2 Mean	60% Khondalites + 40% L2	70% Khondalite + 30% L2	Holz & Johannes, 1991	NBS, Stevens <i>et al.</i> , 1997	
SiO ₂	73.56	73.82	73.64	70.55	70.03	65.87	58.15	
TiO ₂	0.27	0.24	0.25	0.71	0.79	0.65	0.63	
Al ₂ O ₃	13.40	13.34	13.92	15.28	15.51	15.82	27.67	
Fe ₂ O ₃	2.40	2.18	2.28	5.46	5.99	4.51*FeO	4.92*FeO	
MnO	0.06	0.05	0.07	0.11	0.12		0.01	
MgO	0.23	0.20	0.31	0.79	0.87	1.60	3.61	
CaO	1.54	1.52	1.75	1.15	1.06	1.46	0.86	
Na ₂ O	1.86	1.85	3.38	1.94	1.70	3.08	0.86	
K ₂ O	4.91	4.97	3.89	3.20	3.08	3.95	2.51	
P ₂ O ₅	0.05	0.05	0.07	0.07	0.06			
LOI	1.29	1.31	0.48	0.88	0.95		0.80 H ₂ O	

The melting of metapelitic rocks at Rayagada is distinct in style when compared with the other areas, and provides clues for reconstructing the petrological-cum-tectonic evolution of the Rayagada granulites.

First, there are two kinds of granitoids, distinguished by the presence or absence of cordierite, both of which are S-type granites. Second, the cordierite-granites are interlayered with leptynites (L-1) which are of a

different composition than the leptynites (L-2) free of such interlayering. Third, the relative volumes of this cordierite-granite are around 15 to 20% of the total L-1 + cordierite-granite exposures. When we compare the metapelite-granitoid complex of the Chilka Lake area with the present ones several significant similarities and differences emerge (Sen and Bhattacharya 1997). The most abundant variety among the khondalite suite at Chilka Lake, the group-A khondalites, are quite comparable with the metapelites of Rayagada (figure 10). The other metapelites of Chilka, barring the Mg-Al rich ones, are distinctly migmatitic and contain cordierite. In contrast, the cordierite granites of Rayagada are homogeneous with sharp boundaries which separate them from the host leptynites. The presence of migmatites, the minor extent of melting and near isothermal decompression at Chilka can be explained in terms of relatively slow tectonic uplift rates (less than 0.5 mm/year). This is compatible with the suggestion of Patino Douce *et al* (1990) that migmatites are syntectonic, while granite plutonism is commonly post-tectonic or related to exhumation.

For understanding the origin of the two varieties of granitoids, the possibility of the presence of two different metapelitic protoliths should be evaluated. The compositional spread of the Rayagada metapelites is rather narrow; additionally, composition of the sensitive mineral phases such as garnets are also similar. It is evident from the statistical parameters presented in table 13 that the restitic metapelites have a low variance, and hence it is reasonable to consider the metapelitic protolith of Rayagada as a single variety.

Derivation of the two types of granites from protoliths of similar composition could only mean melting under different conditions. Figure 15 shows that a melting curve valid for metapelitic protolith could be intersected at about 6 kbar and 780°C. A further melting is possible at 5 kbar, 830°C for a greywacke-like composition. It is significant that the cordierite-granites show a near isobaric cooling path starting from 5 kbar. We envision a two stage melting where the second melting took place at shallower depths during exhumation. The second melting is inferred to have taken place at pressures lower by one kbar and temperatures higher by 50°C approximately. This implies a tectonic uplift at rates greater than 0.5 mm/year as shown by our unpublished calculations. Furthermore, the melting reaction curve that is intersected at 5 kbar is valid for graywackes, implying that after the first stage of melting the restites had approached the composition of graywacke. The compositional field of (L-2) leptynites indicates that if melts of such composition are extracted, the residual rocks would move in the direction of graywackes.

It is known from recent experimental investigations on melting of pelitic compositions that cordierite along with other phases are produced by melting at lower

pressures, and cordierite is eliminated at higher pressures. This general trend can be read from the experimental results of Carrington and Harley (1995b) and Stevens *et al* (1997). It must however be admitted that the starting compositions selected in these experiments, especially in Stevens *et al* (1997) have very high Al₂O₃ contents. Among the starting materials reported by Stevens *et al* (1997) the NBS pelite is the closest to the probable protolith composition at Rayagada; even then the alumina is fairly high in the NBS pelite. Such high alumina might have caused extended stability of cordierite in these experiments.

In other words, we suggest that in the first melting at 6 kbar cordierite was not produced because of composition and/or pressure, whereas both these factors favoured cordierite as a peritectic phase during melting around 5 kbar. A clue to the compositional change of the protolith between two phases of melting is the difference in the Rb/Sr ratios of the leptynites L-1 and L-2. The former has an average Rb/Sr of 1.72 ± 0.45 while in the latter the average is 0.77 ± 0.17 . An examination of partition coefficients between minerals and peraluminous granitic melts (Harris *et al* 1995) shows that among the four relevant minerals, alkali feldspar, muscovite, biotite and plagioclase, biotite has a very high Rb/Sr ratio with respect to melts, e.g. 6.2 (alkali feldspar-0.25, muscovite-0.5, plagioclase-0.01). Biotite dehydration melting has taken place at both pressures and the biotite left after melting at 6 kbar would be considerably enriched in Rb/Sr, thereby producing a higher value in L-1. The very low values of plagioclase will have an opposite effect, but this will be minor, because in the second melting biotite could have melted out completely whereas plagioclase would be a peritectic phase.

We envisage that during the second melting at 5 kbar granitoids of L-1 were produced along with cordierite-garnet-plagioclase-sillimanite-quartz and alkali feldspar as peritectic phases. These phases separated out to form the cordierite-granite layers. This implies that L-1 plus 15 to 20% of cordierite-granite should approximate the composition of L-2. That such chemical equivalence is within the realm of possibility is borne out by the calculations shown in table 14. The derived and real values of L-2 are quite close, excepting Na₂O; in the computed composition Na₂O is lower. This is evidently caused by a large spread, with respect to Na₂O, in the cordierite-granites.

Proceeding along these lines, it is possible to reconstruct the composition of the protolith by assuming reasonable degrees of melting. In table 14, we have combined in 30:70 and 40:60 proportions of L-2 and the average restites. It is interesting that this hypothetical protolith is quite close in composition to the starting material in the experiments of Holtz and Johannes (1991). The alumina contents are more realistic than its counterparts in the other experiments quoted here, the Mg/Fe ratios are also moderate.

Holtz and Johannes (1991) conducted their experiments at 3 and 5 kbar and in both sets cordierite was a peritectic phase. No experiments were, however, carried out at higher pressures.

Thus the integrated history of granulites and granites of Rayagada is distinctly at variance with that of the two other granulite terrains in the northern Eastern Ghats. There are several significant differences. Two stage melting producing different granulites, signatures of cooling rather than decompression in the later stages and virtual erasure of the effects of early deformation and metamorphism are the three areas of major divergence. These differences will have to be accounted for in reconstructing the evolution of at least the northern part of the Eastern Ghats.

9. Concluding remarks

In sum, the main causative factor behind the diverse scenario of evolution of Rayagada granulites appears to be the last melting caused by exhumation at tectonic rates. The last stages of Chilka granulites were marked by isothermal decompression accompanied by a minor amount of melting (leucosomes in S_3 fractures). In Rayagada the second melting at low pressure not only replaced the effects of decompression with those of melting, but also erased a part of the early F_1 history. It is noteworthy that sillimanite to andalusite transformation, the breakdown reaction of cordierite and spinel + quartz \rightarrow garnet + sillimanite reaction, all testify to an all pervasive cooling at about 5 kbar pressure.

For the first melting at 6 kbar, which again could have obliterated the effects of earlier deformation and metamorphism, a prograde increase of temperature was the likely cause. There is no direct evidence for prograde reactions corresponding to this pressure at Rayagada, but in Jenapore a prograde P-T path at 6 to 7 kbar and 630° to 750°C was invoked during F_2 deformation by Kar *et al* (2000). The possibility of such a P-T path was also suggested for the Chilka Lake granulites by Sen *et al* (1995).

Thus it seems plausible that the nature and sequence of tectonic-metamorphic events were the same across the three terrains in the northern Eastern Ghats, but different rates of exhumation and the different styles of melting produced different signatures in the Rayagada granulite terrane.

Acknowledgement

Chemical analyses of rocks were performed at the XRF laboratory, USIC-SIF, Gauhati University. Minerals were analysed in the EPMA laboratory, USIC, Roorkee University. This work was supported by the Indian National Science Academy, New Delhi

and Indian Statistical Institute, Calcutta. The help of all these institutions is gratefully acknowledged.

References

- Berman R G 1991 Thermobarometry using multi-equilibrium calculations: a new technique, with petrological applications; *Canadian Mineral.* **29** 833–856
- Bhattacharya S, Sen S K and Acharyya A 1994 Structural setting of the Chilka Lake granulite-migmatite-anorthosite suite with emphasis on the time relation of charnockites; *Precambrian Research* **66** 393–409
- Bhattacharya S 1997 Evolution of Eastern Ghats granulite belt in a compressional tectonic regime and juxtaposition against the Iron Ore craton of Singhbhum by oblique collision-transpression; *Proc. Indian Acad. Sci. (Earth Planet. Sci.)* **106** 65–75
- Carrington D P and Harley S L 1995a The stability of osumilite in metapelitic granulites; *J. Met. Geol.* **13** 613–625
- Carrington D P and Harley S L 1995b Partial melting and phase relations in high grade metapelites: an experimental petrogenetic grid in the KFMASH system; *Contrib. Mineral. Petrol.* **120** 270–291
- Chappell B W and White A J R 1992 I- and S-type granites in the Lachlan fold belt. *Trans. Royal Soc. Edinburgh; Earth Sci.* **83** 1–26
- Dasgupta S, Sanyal S, Sengupta P and Fukuoka M 1994 Petrology of granulites from Anakapalle: evidence for Proterozoic decompression in the Eastern Ghats, India; *J. Petrol.* **35** 433–459
- Harris N, Ayres M and Massey J 1995 Geochemistry of granitic melts produced during incongruent melting of muscovite; Implications for the extraction of Himalayan leucogranite magmas; *J. Geophys. Res.* **100** 15767–15777
- Holland T J B and Powell R 1990 An enlarged and updated internally consistent thermodynamic dataset with uncertainties and correlations: the system $K_2O-Na_2O-CaO-MgO-MnO-FeO-Fe_2O_3-Al_2O_3-TiO_2-SiO_2-C-H_2O_2$; *J. Metamorphic Geology* **8** 89–124
- Holtz F and Johannes W 1991. Genesis of peraluminous granites. I. Experimental investigation of melt compositions at 3 and 5 kbar and various H_2O activities; *J. Petrol.* **32** 935–958
- Kar R, Bhattacharya S and Sheraton J W 2000 Hornblende-dehydration melting in mafic rocks and the link between massif-type Charnockite and associated granulites: Eastern Ghats Granulite Belt, India; *J. Petrol.* (communicated)
- Olsen E and Bunch T E 1970 Compositions of natural osumilites; *American Mineral.* **55** 875–879
- Patino Douce A E, Humphreys E D and Johnston A D 1990 Anatexis and metamorphism in tectonically thickened continental crust exemplified by the Sevier hinterland, western North America; *Earth Planet. Sci. Lett.* **97** 290–315
- Perchuk L and Gerya T 1989 Petrology and retrograde P-T path in granulites of the Kanskaya formation, Yenisey range, Eastern Siberia; *J. Metamorphic Geology* **7** 599–617
- Pereira M D and Bea F 1994 Cordierite-producing reactions in the Pena Negra Complex, Avila Batholith, Central Spain: The key role of cordierite in low-pressure anatexis; *Canadian Mineral.* **32** 763–780
- Powell R and Powell M 1977 Geothermometry and oxygen barometry using coexisting iron-titanium oxides: a reappraisal; *Mineral. Mag.* **41** 257–263
- Sen S K, Bhattacharya S and Acharyya A 1995 A multi-stage pressure-temperature record in the Chilka Lake granulites: The epitome of metamorphic evolution of Eastern Ghats, India? *J. Metamorphic Geology* **13** 287–298

- Sen S K and Bhattacharya S 1997 Dehydration melting of micas in the Chilka Lake khondalites: The link between the metapelites and granitoids; *Proc. Indian Acad. Sci. (Earth Planet. Sci.)* **106** 277–297
- Shaw R K and Arima M 1996 Retrograde pressure-temperature path for spinel-bearing metapelites in Rayagada, Eastern Ghats, India; *Mineralogy and Petrology* **60** 41–59
- Shaw R K and Arima M 1998 A corundum-quartz assemblage from the Eastern Ghats Granulite Belt, India: evidence for high P-T metamorphism?; *J. Metamorphic Geology* **16** 189–196
- Stevens G, Clemens J D and Droop G T R 1997 Melt production during granulite facies anatexis: experimental data from “primitive” metasedimentary protoliths; *Contrib. Mineral. Petrol.* **128** 352–370

MS received 26 August 1999; revised 30 August 2000