

Discriminating four tectonic settings: Five new geochemical diagrams for basic and ultrabasic volcanic rocks based on log–ratio transformation of major-element data

SURENDRA P VERMA^{1,*}, MIRNA GUEVARA¹ and SALIL AGRAWAL²

¹*Centro de Investigación en Energía, Universidad Nacional Autónoma de México, Priv. Xochicalco s/no., Col Centro, Apartado Postal 34, Temixco 62580, Mexico.*

²*Department of Geology, University of Rajasthan, Jaipur 302 004, India.*

**e-mail: spv@cie.unam.mx*

We present five new discriminant function diagrams based on an extensive database representative of basic and ultrabasic rocks from four tectonic settings of island arc, continental rift, ocean-island, and mid-ocean ridge. These diagrams were obtained after \log_e -transformation of concentration ratios of major-elements – a technique recommended for a correct statistical treatment of compositional data. Higher % success rates (overall values from ~83 to 97%) were obtained for proposing these new diagrams as compared to those (~82 to 94%) obtained from the discriminant analysis of the raw major-element concentration data (i.e., without the \log_e -transformation and without taking ratios of the compositional data, but using exactly the same database to provide an unbiased comparison), suggesting that such a data transformation constitutes a statistically correct and recommended technique. The new diagrams also resulted in less mis-classification of basic and ultrabasic rocks from known tectonic settings than the diagrams obtained from the raw data. The use of these highly successful new discriminant function diagrams is illustrated using Miocene to Recent basic and ultrabasic rocks from three areas of Mexico with complex or controversial tectonic settings (Mexican Volcanic Belt, Los Tuxtlas volcanic field, and Eastern Alkaline Province), as well as older rocks from three areas (Deccan, Malani, and Bastar) of India. Additionally, the major-element data from two ‘known’ continental arc settings are used to show that they are similar to those from the island arc setting. Continental rift setting is inferred for all Mexican cases and for one cratonic area of India (Malani) and an IAB setting for the Bastar craton. The Deccan flood basalt province of India is used to warn against an indiscriminate use of those discrimination diagrams that do not explicitly include the likely setting of the area under evaluation. An Excel template is also provided for an easy application of these new diagrams for discriminating the four settings considered in this work.

1. Introduction

Contemporaneously with the development of plate tectonics and the recognition of specific tectonic settings such as island arc, continental rift, ocean-island, and mid-ocean ridge, the idea that magmas from different tectonic settings might be

distinguishable in their chemistry was pioneered by Pearce and Cann (1971, 1973). Since then, numerous bivariate and ternary tectonomagmatic diagrams have appeared in the literature (for more details see, e.g., Rollinson 1993; Verma 2000a, 2006; Agrawal *et al* 2004). These diagrams provide additional evidence, complementary to the

Keywords. Log-transformation; compositional space; discriminant function analysis; standard igneous norm and volcanic rock classification system computer program; Mexico; India.

field evidence, and suggest an affiliation rather than an unequivocal confirmation of the tectonic environment.

From the statistical point of view, probably a major advance in the proposal and functioning of discrimination diagrams came with the introduction of discriminant analysis, in which a large number of variables are examined to isolate those that most effectively classify the samples in their predefined classes or groups. As early as 1965 Chayes and Velde (1965) used discriminant functions to distinguish between circum-oceanic and ocean-island basaltic lavas. Later, Pearce (1976) used 8 major-elements (SiO_2 , TiO_2 , Al_2O_3 , FeO , MgO , CaO , Na_2O , and K_2O) in a total of 358 samples of basaltic rocks and 6 classes to propose new discriminant function diagrams. The linear field boundaries between the groups were, however, drawn by 'eye' (Pearce 1976, p. 22), instead of some objective procedure. Soon afterwards, Yellur and Nair (1978) used Pearce (1976) discriminant function and other diagrams to infer the tectonic environment of Chitradurga metabasalts in south India.

The problem of 'eye-fitted boundaries' persisted in the proposal of most discrimination diagrams until Agrawal (1999) suggested how to replace these eye-fitted boundaries by probability-based surface boundaries. The other problem in the creation of such discrimination diagrams was the inadequacy of the dataset used to represent the population, i.e., the statistical sample probably was not representative of the population. For example, only 358 samples were used by Pearce (1976) to represent 6 classes; many other diagrams are based on similar or still smaller data sets (e.g., 507 samples from 5 settings by Mullen 1983; 35 mean values from about 300 analysis for 5 classes by Butler and Woronow 1986). The lack of representativeness as well as the use of 'eye-fitted' boundaries might be the reasons why Armstrong-Altrin and Verma (2005) found that many tectonic setting discrimination diagrams proposed and used for sedimentary rocks do not work properly.

Both these shortcomings of discrimination diagrams (lack of representativeness of the database and use of 'eye-fitted' boundaries) were recently overcome by Agrawal *et al* (2004), who used a total of 1159 samples of mostly basic rocks from 4 tectonic settings (island arc, continental rift, ocean-island, and mid-ocean ridge) and performed the discriminant analysis to propose 5 new discriminant function diagrams, in which the boundaries were probability-based surfaces (or lines in two-dimensions).

Another problem attacked or addressed by none of the proposals of discrimination diagrams using

linear discriminant analysis, as of today, is the 'closure' or 'constant sum' of compositional data including the major-elements in rocks (e.g., Chayes 1960, 1983; Skala 1977, 1979; Aitchison 1986; Reymont 1987; Woronow and Love 1990; Rollinson 1993; Reymont and Savazzi 1999). One of the rare exceptions is Butler and Woronow (1986) who used a small set of 35 TiO_2 , Zr, Y, and Sr average analyses (based on about 300 individual analyses) of basalts to perform principal component analysis (but not linear discriminant analysis) of log-centered components.

As is well known, the compositional data ideally sum to 1 (constant sum of parts) or 100% (the 'closure' problem persists even if the constituents of analysis do not sum exactly to 100%). This makes them statistically dependent of each other, for example, if we suppose that the rock composition is represented by 10 major-elements or oxides (SiO_2 , TiO_2 , Al_2O_3 , Fe_2O_3 , MnO , MgO , CaO , Na_2O , K_2O , and P_2O_5), all parts are mutually dependent because all of them sum up ideally to 1 or 100%. Now, if we assume that all parts are non-zero, and we fix one part (no matter which first part we choose, an essential property of the closure or constant sum is that this part has to be less than the whole, i.e., <1 or $<100\%$), the second part (irrespective of which part we imagine to be the second), although not totally predictable, has to be $<(1-\text{first part})$ or $<(100\%-\text{first part}\%)$ (i.e., partly predefined and dependent). The third and later parts will also be partly defined, but within consecutively smaller ranges. The final (10th) part will be totally predictable, defined, and dependent. These interdependences arising from the closure problem are an undesirable property for any statistical analysis, including the frequently used bivariate 'Harker-type' and ternary diagrams for the interpretation of igneous rock chemistry (for the latter, the situation is even worse because of the renormalization – to 100 – of the three parts used for constructing them; see Butler 1979). According to Aitchison (1986), the study of compositions is essentially concerned with the relative magnitudes of the parts rather than their absolute values, which leads to the conclusion that we should think in terms of ratios (e.g., Rollinson 1993) and perhaps some additional transformation of these ratio data in order to free the sample space. We must, however, be aware of the danger of spurious correlations between certain kind of ratios (e.g., Chayes 1978; Butler 1986).

Our present work is intended to address the issue of closure or constant sum, while complying with the other two aspects – the statistical sample representative of the population and an objective procedure for drawing field boundaries, to arrive at a

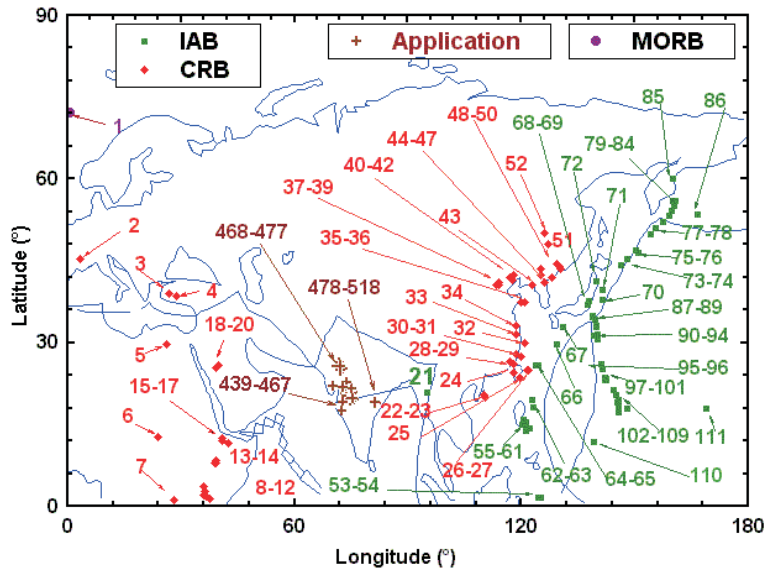


Figure 1. Schematic location of basic (and ultrabasic) rock samples in the quadrant 0–180° longitude and 0–90°N latitude (northern part of the eastern hemisphere: Asia, Europe, and part of Africa). The symbols used are shown as inset. For meaning of # locations refer to table 1, and for # application locations, table 9.

statistically sound or valid discriminant analysis of major-element data. We present a set of five, highly successful, new discrimination diagrams (using linear discriminant analysis of \log_e -transformation of major-element ratios). We performed discriminant analysis of actual major-element concentration data from the new extended database and compared the success rates with our earlier work with a smaller database, as well as with those obtained from the \log_e -transformation of concentration ratios to show that the \log_e -transformation is a recommended, statistically-correct procedure for handling compositional data. We also include some specific examples for illustration purposes. Finally, we provide an MS-Excel template to help interested persons in using our new discriminant function diagrams.

2. Database

We prepared a representative database of 10 or 11 major-elements (depending on the availability of the total iron as Fe_2O_3 and FeO) in mostly basic rocks (ultrabasic rocks were included from wherever available) from mainly 4 tectonic settings (figures 1–4; table 1): island arc basic rocks (IAB), continental rift basic rocks (CRB), ocean-island basic rocks (OIB), and mid-ocean ridge basic rocks (MORB). As in Agrawal *et al* (2004), we note that continental arc is a missing set because the major-element characteristics of basic rocks from this setting are very similar to those from the island arc; to support this claim, we will use examples from

this setting to show that the rocks from continental arc plot mainly in the island arc field.

Our present database contains a total of 2732 samples (table 2) as follows: 463 samples for IAB (named group 1), 771 samples for CRB (group 2), 572 samples for OIB (group 3), and 926 samples for MORB (group 4). The training set consisted of 2332 samples, whereas the testing set was established from randomly drawn 400 samples, 100 from each tectonic setting. The present database contains more samples (2732 versus 1159 samples; table 2) than our earlier study (Agrawal *et al* 2004).

The random selection of samples for the testing set was carried out by a simple computer program (in QUICKBASIC written by one of us – S Agrawal) for generating random numbers. For example, for the IAB group for which we had 463 samples and we wished to randomly separate 100 samples, 100 random numbers between 1 and 463 (the total number of samples in this group) were generated and the samples corresponding to these random numbers were assigned to the testing group. Similarly, for the CRB group 100 random numbers were generated between 1 and 771 (being the total number of CRB samples in our database) and so on to complete the four settings.

The criteria for choosing the samples in our database were the same as in Agrawal *et al* (2004), viz., the tectonic setting described explicitly and unambiguously by the author(s), $(\text{SiO}_2)_{\text{adj}}$ content $\leq 52\%$ (the subscript adj refers to the adjusted data as explained below), and age mostly Pliocene to Recent (although some Late Miocene rocks were

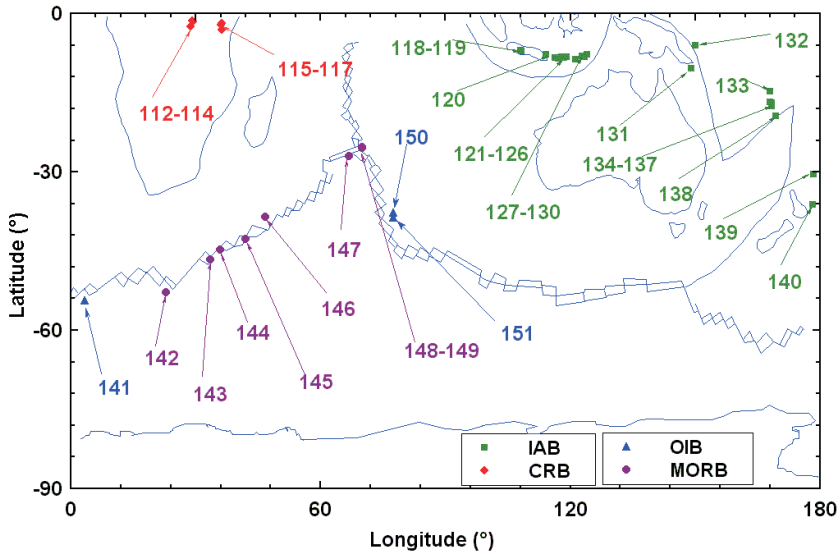


Figure 2. Schematic location of basic (and ultrabasic) rock samples in the quadrant 0–180° longitude and 0–90°S latitude (southern part of the eastern hemisphere: Australia, New Zealand, part of Asia, and southern part of Africa). The symbols used are shown as inset. For meaning of # locations refer to table 1.

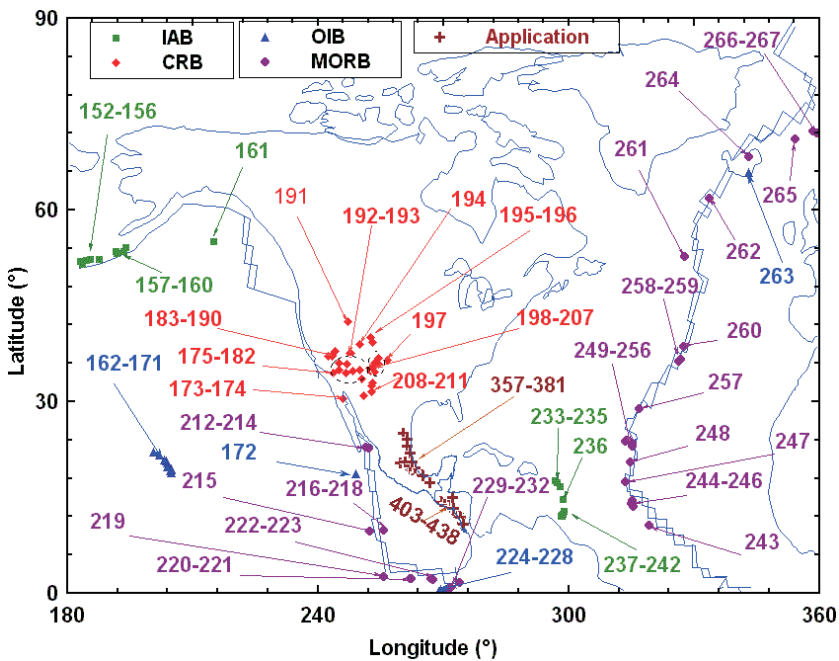


Figure 3. Schematic location of basic (and ultrabasic) rock samples in the quadrant 180–360° longitude and 0–90°N latitude (northern part of the western hemisphere: north America, central America, northern part of south America, and part of Atlantic and Pacific Oceans). The symbols used are shown as inset. For meaning of # locations refer to table 1, and for # application locations, table 9.

also included). Inclusion of samples with $(\text{SiO}_2)_{\text{adj}}$ content $\leq 52\%$ also means that basic as well as ultrabasic rocks from all tectonic settings were present in our database although ultrabasic rocks from the IAB and MORB were less numerous than from the other two settings (CRB and OIB). Further, our experience shows that the inclusion

of a few additional samples with $(\text{SiO}_2)_{\text{adj}}$ somewhat higher (up to $\sim 53\%$), along with the basic and ultrabasic samples, provides statistically similar results. Thus, mostly basic and ultrabasic rocks, without the application of any other criteria for primitive mantle-derived magmas (see Velasco-Tapia and Verma 2001 for a synthesis

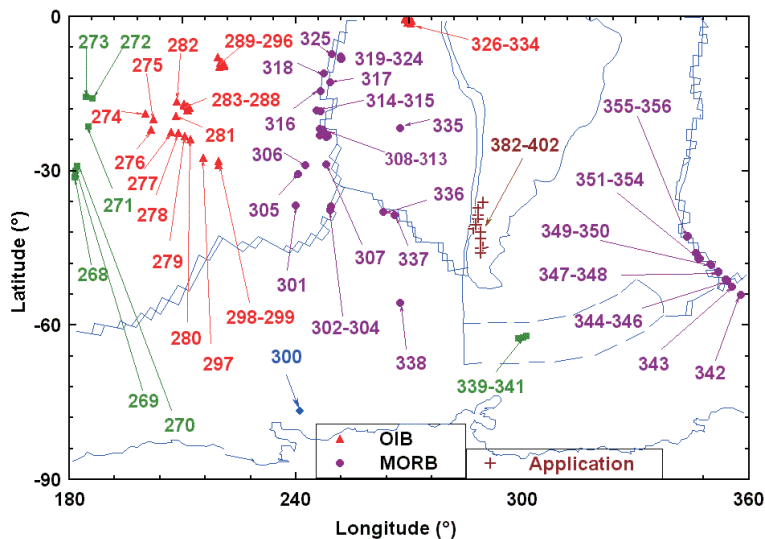


Figure 4. Schematic location of basic rock samples in the quadrant 180–360° longitude and 0–90°S latitude (southern part of the western hemisphere: part of south America, Atlantic and Pacific Oceans). The symbols used are shown as inset. For meaning of # locations refer to table 1, and for # application locations, table 9.

of such criteria), were compiled for this study. Therefore, effects of magma evolution processes, such as fractional crystallization, magma mixing, or assimilation coupled or uncoupled with fractional crystallization, are also taken into account, at least indirectly, because our database includes all ultrabasic and basic rock samples irrespective of whether they are primitive or evolved rocks in terms of these processes. In summary, the limit of about 52% $(\text{SiO}_2)_{\text{adj}}$ was chosen simply because we wanted to use only the basic and ultrabasic rocks in this work; our future work will be directed towards handling of more differentiated intermediate and acid igneous rocks.

Specifically, for identifying ultrabasic and basic magmas according to the IUGS Subcommittee on the Systematics of Igneous Rocks (Le Bas *et al* 1986), the volcanic rock classification and TAS diagram should be prepared on an anhydrous 100% adjusted basis after a proper Fe-adjustment of the major-element data, i.e., using both Fe_2O_3 and FeO varieties and not simply total Fe as $\text{Fe}_2\text{O}_3^{\text{t}}$ or FeO^{t} . The Subcommittee recommended that either actually-analyzed Fe_2O_3 and FeO concentrations be used before the adjustment to 100%, or when only total Fe is available, Le Maitre (1976) method for Fe_2O_3 and FeO calculations should be used. However, the use of actually measured Fe_2O_3 and FeO concentrations in igneous rocks for rock classification may not be appropriate, in spite of the Subcommittee's recommendations, because inevitable, extensive post-eruptive changes in their values take place, according to Middlemost (1989) who, in fact, evaluated the different ways for estimating the $\text{Fe}_2\text{O}_3/\text{FeO}$ ratio and

proposed rock-type based values for the division of total Fe into the Fe_2O_3 and FeO varieties. And this subdivision is a difficult task without using a suitable computer program, such as SINCLAS – standard igneous norm and volcanic rock classification system (Verma *et al* 2002).

All data were, therefore, processed using SINCLAS computer program under the option of Middlemost (1989) for iron-oxidation ratio calculations and 100% adjustment on an anhydrous basis (Verma *et al* 2002); this computer program provides highly accurate and consistent results as documented by Verma *et al* (2003). The data processing by SINCLAS is thus a required step because we wish to separate the total Fe into its two types – the Fe_2O_3 and FeO varieties, and to choose the appropriate samples (with $(\text{SiO}_2)_{\text{adj}}$ content $\leq 52\%$) in our database before the transformation of the data. Even for the samples with Fe_2O_3 and FeO individually reported, we wish to standardize this subdivision of iron according to some standard recommendations (e.g., Middlemost 1989) by first combining these parts into total $\text{Fe}_2\text{O}_3^{\text{t}}$ and then subdividing it into Fe_2O_3 and FeO varieties. This is done because all data should be handled in exactly the same way irrespective of whether iron was reported in the literature as total $\text{Fe}_2\text{O}_3^{\text{t}}$ or total FeO^{t} or as separate varieties. Thus, we note that the data processing using SINCLAS will be mandatory for all applications because, in order to be consistent with the procedure of these new discriminant function diagrams, all samples must be processed for the calculation of Fe_2O_3 and FeO contents, according to the proposal of Middlemost (1989), which in

Table 1. *Sample locations for the database construction (testing and training sets).*

Site #	Figure #	Longitude (°)	Latitude (°)	Country/Province	No. of samples	Reference
Island arc						
21	1	95	20.8	Burma Arc (Mt. Popa volcano)	4	Stephenson and Marshall (1984)
53	1	124.5	1.6	Sangihe Arc (Manado Tua)	7	Tatsumi <i>et al</i> (1991)
54	1	125.18	1.5	Sangihe Arc (Tongkoko)	1	Tatsumi <i>et al</i> (1991)
55	1	121.05	13.81	Luzon Arc	2	Miklius <i>et al</i> (1991)
56	1	121.2	14.3	Philippines Arc (Macolod corridor)	8	Knittel <i>et al</i> (1997)
57	1	122.3	14.3	Philippines Arc (Mt. Arayat)	16	Bau and Knittel (1993)
58	1	122.35	14.3	Philippines Arc (Mt. San Cristobal)	1	Defant <i>et al</i> (1989)
59	1	120.16	15.0	Luzon Arc (Bataan arc-front, Mt. Native, Mt. Limay)	2	Defant <i>et al</i> (1991)
60	1	120.48	15.8	Luzon Arc (Bataan arc-front, Mt. Amorong, Mt. Arayat)	2	Defant <i>et al</i> (1991)
61	1	121.35	15.5	Philippines Arc (Mt. Mariveles)	1	Defant <i>et al</i> (1989)
62	1	123.1	18.2	Philippines Arc (Cagua)	1	Defant <i>et al</i> (1989)
63	1	122.9	19.5	Philippines Arc (Babuyan de Claro)	1	Defant <i>et al</i> (1989)
64	1	123.68	25.93	Ryukyu Arc (Kobi-syo)	3	Shinjo (1998)
65	1	124.56	25.92	Ryukyu Arc (Sekibi-syo)	4	Shinjo (1998)
66	1	129.52	29.6	Ryukyu Arc	5	Shinjo <i>et al</i> (2000)
67	1	131.1	32.85	Japan Arc (Kyushu)	1	Kita <i>et al</i> (2001)
68	1	137.5	37.05	Japan Arc (Ueno)	16	Kimura <i>et al</i> (2002)
69	1	138	37.57	Central Japan	5	Kimura <i>et al</i> (2002)
70	1	141.4	37.9	Japan Arc (Zao)	1	Sakuyama and Nesbitt (1986)
71	1	141.6	39.6	Japan Arc (Iwate, Kayo)	2	Sakuyama and Nesbitt (1986)
71	1	141.6	39.6	Japan Arc NE (Iwate)	2	Togashi <i>et al</i> (1992)
72	1	139.8	41.35	Japan Arc (Oshima-Oshima)	1	Sakuyama and Nesbitt (1986)
73	1	146.25	44.25	Kuril Arc (Tyatya volcano)	9	Nakagawa <i>et al</i> (2002)
74	1	147.86	45.25	Kurile Island Arc (Iturup island, Demon and Atsonupuri vol.)	2	Zhuravlev <i>et al</i> (1987)
75	1	150.9	46.37	Kurile Island Arc (Gorshkov volcano)	1	Zhuravlev <i>et al</i> (1987)
76	1	150.4	46.87	Kurile Island Arc (Vavilov volcano)	1	Zhuravlev <i>et al</i> (1987)
77	1	154.13	49.93	Kurile Island Arc (Baliankin volcano)	1	Zhuravlev <i>et al</i> (1987)
78	1	155.43	50.93	Kurile Island Arc (Alaid volcano)	1	Zhuravlev <i>et al</i> (1987)
79	1	157.52	52.09	Kamchatka Arc (Mutnovsky, Ksudach)	2	Kepezhinskas <i>et al</i> (1997)
80	1	159	53.2	Kamchatka Arc (Avachinsky)	1	Kepezhinskas <i>et al</i> (1997)
81	1	159.88	54.12	Kamchatka Arc (Semyachik)	1	Kepezhinskas <i>et al</i> (1997)
82	1	160.53	55.17	Kamchatka Arc (Nikolka)	1	Kepezhinskas <i>et al</i> (1997)
83	1	160.2	55.9	Kamchatka Arc (Tolbachik, Kamen, Ploskiy)	5	Kepezhinskas <i>et al</i> (1997)
83	1	160.2	55.9	Kamchatka Arc (Tolbachik)	1	Ishikawa <i>et al</i> (2001)
84	1	160.6	56.1	Kamchatka Arc (Klyuchevskoy)	2	Ishikawa <i>et al</i> (2001)
85	1	160	61	Kamchatka Arc (Valovayam, Belaya); approx. Coordinates	4	Kepezhinskas <i>et al</i> (1997)
86	1	166.5	53.5	Aleutian Arc (Makushin)	1	Kay and Kay (1994)
87	1	138.8	34.9	Japan Arc (Shirahama)	2	Tamura (1994)
88	1	138.95	34.71	Izu-Bonin Arc (Izu peninsula)	5	Tatsumi <i>et al</i> (1992)
89	1	139.35	34.35	Izu-Bonin Arc, Japan (Oshima, Toshima, Miyakejima)	5	Taylor and Nesbitt (1998)
90	1	139.7	33.2	Izu-Bonin Arc	2	Tatsumi <i>et al</i> (1992)

Table 1. (Continued).

Site #	Figure #	Longitude (°)	Latitude (°)	Country/Province	No. of samples	Reference
91	1	139.8	32.8	Izu-Bonin Arc, Japan (Hachijojima, Aogashima)	8	Taylor and Nesbitt (1998)
92	1	140.11	31.41	Izu-Bonin Arc	1	Tatsumi <i>et al</i> (1992)
93	1	139.13	31.22	Izu-Bonin Arc	1	Tatsumi <i>et al</i> (1992)
94	1	140.3	30.5	Izu-Bonin Arc, Japan (Torishima)	5	Taylor and Nesbitt (1998)
95	1	141	26.08	Mariana Arc	1	Bloomer <i>et al</i> (1989)
96	1	141.44	25.1	Mariana Arc	4	Bloomer <i>et al</i> (1989)
97	1	142.12	23.55	Mariana Arc	3	Bloomer <i>et al</i> (1989)
98	1	142.25	23.37	Mariana Arc	2	Bloomer <i>et al</i> (1989)
99	1	142.44	23.3	Mariana Arc	1	Bloomer <i>et al</i> (1989)
100	1	142.44	23.18	Mariana Arc	1	Bloomer <i>et al</i> (1989)
101	1	142.25	23.08	Mariana Arc	4	Bloomer <i>et al</i> (1989)
102	1	144.25	21.42	Mariana Arc	2	Bloomer <i>et al</i> (1989)
103	1	145	20.42	Mariana Arc	1	Bloomer <i>et al</i> (1989)
104	1	145.56	19.42	Mariana Arc	1	Bloomer <i>et al</i> (1989)
105	1	145.25	19	Mariana Arc	1	Hole <i>et al</i> (1984)
106	1	145.65	18.75	Mariana Arc (Agrigan)	3	Elliott <i>et al</i> (1997)
107	1	145.8	18.16	Mariana Arc (Pagan)	2	Elliott <i>et al</i> (1997)
108	1	145.85	17.33	Mariana Arc (Guguan)	1	Elliott <i>et al</i> (1997)
109	1	148	18	Mariana Arc (Northern Islands)	4	Woodhead (1988)
110	1	139.12	11.75	Yap Arc System	1	Ohara <i>et al</i> (2002)
111	1	169	18	New Hebrides Arc (Urepara-Hunter Island)	16	Monzier <i>et al</i> (1997)
118	2	108	-7	Sunda Arc (Java)	3	Whitford <i>et al</i> (1979)
119	2	108.2	-7.16	Sunda Arc (Gulunggung)	2	Turner and Foden (2001)
120	2	114.25	-7.8	Java Arc (Ringgit Besar)	2	Edwards <i>et al</i> (1994)
121	2	116.4	-8.45	Sunda Arc (Rindjani)	2	Foden and Varne (1980)
122	2	117.15	-8.58	Sunda Arc (Gunung Sangenges)	1	Foden and Varne (1980)
123	2	118	-8.25	Sunda Arc (Tambora)	3	Foden and Varne (1980)
124	2	118.59	-8.45	Sunda Banda Arc (Soromundi)	3	Foden and Varne (1980)
125	2	119.08	-8.2	Sunda Arc (Sangeang Api)	2	Foden and Varne (1980)
126	2	119.1	-8.2	Sunda Arc (Sangeang)	6	Turner <i>et al</i> (2003)
127	2	121.3	-8.66	Sunda Arc (Inerie, Ija)	2	Stolz <i>et al</i> (1990)
127	2	121.3	-8.66	Sunda Banda Arc (Inerie)	1	Wheller <i>et al</i> (1987)
128	2	122.85	-8	Sunda Arc (Mandiri, Boleng)	2	Stolz <i>et al</i> (1990)
128	2	122.85	-8	Sunda Banda Arc (Boleng)	1	Wheller <i>et al</i> (1987)
129	2	123.4	-8.3	Sunda Arc (Werung)	2	Hoogewerff <i>et al</i> (1997)
130	2	123.94	-7.7	Sunda Arc (Batu Tara)	5	Stolz <i>et al</i> (1988)
130	2	123.94	-7.7	Sunda Banda Arc (Batu Tara)	2	Wheller <i>et al</i> (1987)
131	2	149	-10.43	Papua New Guinea Arc	4	Hegner and Smith (1992)
132	2	150	-6	New British Island Arc (Bangun, Kimbe, Unea, Undaka)	4	Woodhead and Johnson (1993)
133	2	168	-14.7	Vanuatu Arc (Mereleva volcano)	7	Barsdell (1988)
134	2	168	-16.7	Vanuatu Arc (Epi)	15	Barsdell and Berry (1990)
135	2	168.3	-17	New Hebrides Arc (Epi, Efate)	15	Dupuy <i>et al</i> (1982)
136	2	168.43	-17.57	Vanuatu Arc (Efate Island, Quoin hill)	1	Raos and Crawford (2004)
137	2	168.49	-17.5	Vanuatu Arc (Efate Island, Emau)	1	Raos and Crawford (2004)
138	2	169.4	-19.4	New Hebrides Arc (Erromango, Tanna, Aneityum)	11	Dupuy <i>et al</i> (1982)

Table 1. (Continued).

Site #	Figure #	Longitude (°)	Latitude (°)	Country/Province	No. of samples	Reference
139	2	178.34	-36.17	Kermadec Arc (Rumble IV)	5	Gamble <i>et al</i> (1995)
140	2	178.43	-30.51	Kermadec Arc (Macauley Island)	5	Smith <i>et al</i> (2003)
152	3	183	51.95	Aleutian Arc (Kanaga, Adagdak)	2	Kay and Kay (1994)
153	3	183.5	51.5	Aleutian Arc (Finger bay, Hidden bay)	2	Kay <i>et al</i> (1982)
154	3	184.5	52.13	Aleutian Arc (Kasatochi)	1	Kay and Kay (1994)
155	3	185.5	52.3	Aleutian Arc (Atka, Mount Kliuchef, and Korovin volcanoes)	7	Myers <i>et al</i> (2002)
155	3	185.5	52.3	Aleutian Arc (Adka)	4	Myers <i>et al</i> (1985)
156	3	187.47	52.25	Aleutian Arc center (Turf point)	1	Singer <i>et al</i> (1992a)
156	3	187.47	52.25	Aleutian Arc center (Turf point)	7	Singer <i>et al</i> (1992b)
157	3	191.6	53.5	Aleutian Arc (Okmok volcano)	6	Singer <i>et al</i> (1992b)
158	3	191.8	53.2	Aleutian Arc (Okmok)	2	Kay and Kay (1994)
159	3	193.5	53.5	Aleutian Arc (Captains Bay)	1	Nye and Reid (1986)
160	3	194.08	54.08	Aleutian Arc	8	Romick <i>et al</i> (1990)
161	3	215	55	Aleutian Arc (Cold Bay)	3	Brophy (1986)
233	3	296.77	17.63	Lesser Antilles Arc (Saba Island)	5	Defant <i>et al</i> (2001)
234	3	297.29	17.25	Lesser Antilles Arc (St. Kitts)	2	Brown <i>et al</i> (1977)
235	3	297.82	16.69	Lesser Antilles Arc (Montserrat, Soufrière hills)	8	Zellmer <i>et al</i> (2003)
236	3	298.71	14.66	Lesser Antilles Arc (Dominica)	2	Brown <i>et al</i> (1977)
236	3	298.82	12.86	Lesser Antilles Arc (Bequia)	1	Brown <i>et al</i> (1977)
237	3	298.82	12.86	Lesser Antilles Arc (Bequia)	11	Smith <i>et al</i> (1996)
238	3	298.6	12.35	Lesser Antilles Arc (Carriacou)	1	Brown <i>et al</i> (1977)
239	3	298.36	12.16	Lesser Antilles Arc (Pilot Hill, Montreuil State)	2	Devine (1995)
240	3	298.39	12.12	Lesser Antilles Arc (Grenada)	13	Thirlwall and Graham (1984)
240	3	298.39	12.12	Lesser Antilles Arc (Grenada)	2	Brown <i>et al</i> (1977)
240	3	298.39	12.12	Lesser Antilles Arc (Grenada)	3	Arculus (1976)
240	3	298.39	12.12	Lesser Antilles Arc (Grenada)	29	Thirlwall <i>et al</i> (1997)
241	3	298.29	12.11	Lesser Antilles (Grenada)*	5	Shimizu and Arculus (1975)
242	3	298.25	12.06	Lesser Antilles Arc (Queen's Park, Radix)	2	Devine (1995)
268	4	181.4	-31.35	Tonga Kermadec Arc (L'Esperance)	2	Ewart <i>et al</i> (1977)
269	4	181.8	-30	Tonga Kermadec Arc (Macauley Island)	8	Ewart <i>et al</i> (1977)
270	4	182.19	-29.06	Tonga Kermadec Arc (Raoul island, Dayrell)	6	Ewart <i>et al</i> (1977)
271	4	185.07	-21.4	Tonga Kermadec Arc (Eua)	2	Bryan <i>et al</i> (1972)
272	4	186.25	-16.03	Tonga Kermadec Arc (Tafahi)	1	Ewart <i>et al</i> (1977)
273	4	184.38	-15.59	Tonga Kermadec Arc (Niua Fo'ou)	1	Bryan <i>et al</i> (1972)
274	4	184.38	-15.59	Tonga Kermadec Arc (Niua Fo'ou)	5	Ewart <i>et al</i> (1977)
339	4	298.9	-62.66	South Shetland Arc (Byers Peninsula)	1	Smellie (1983)
340	4	300.21	-62.39	South Shetland Arc (Copermine Peninsula)	1	Smellie (1983)
341	4	301	-62.14	South Shetland Arc (Fildes Peninsula)	1	Smellie (1983)
Continental rift						
2	1	3.35	45.25	Massif Central	21	Chauvel and Jahn (1984)
2	1	3.35	45.25	Massif Central	3	Fontaine-Vive and De Goer De Herve (1984)

Table 1. (Continued).

Site #	Figure #	Longitude (°)	Latitude (°)	Country/Province	No. of samples	Reference
3	1	26.9	39	Western Anatolia (DAB Area)	4	Aldanmaz <i>et al</i> (2000)
4	1	28.7	38.54	Anatolian Graben	5	Alici <i>et al</i> (2002)
5	1	26.2	29.6	Western Anatolia (EGA Area)	9	Aldanmaz <i>et al</i> (2000)
6	1	24	12.6	Triple Junction, Sudan (Jebel Marra volcano)	9	Davidson and Wilson (1989)
7	1	28.1	1.25	Gregory Rift, Kenya (Silali Volcano)	9	Macdonald <i>et al</i> (1995)
8	1	35.9	3.7	Kenya, Turkana Rift (Bird Nest, Central)	3	Furman <i>et al</i> (2004)
9	1	36	2	Kenya Rift (Nathelat)	1	Macdonald <i>et al</i> (2001)
10	1	36.4	2.7	Kenya, Turkana Rift (Barrier, South)	2	Furman <i>et al</i> (2004)
11	1	36.52	1.75	Kenya Rift (Samburu Hills)	5	Kabeto <i>et al</i> (2001)
12	1	37.5	1.3	Huri Hills, Kenya	36	Class <i>et al</i> (1994)
13	1	39	8	Ethiopian Rift	14	Hart <i>et al</i> (1989)
14	1	39.15	8	Ethiopian Rift	4	Trua <i>et al</i> (1999)
15	1	39.2	8.4	Ethiopian Rift (Gedemsa Volcano)	4	Peccerillo <i>et al</i> (2003)
16	1	41	12	Triple Junction, Afar, Ethiopia (M Hararo)	14	Barrat <i>et al</i> (2003)
17	1	41	12.5	Afar Rift (Boina Centre)	6	Barberi <i>et al</i> (1975)
18	1	42.5	11.5	Triple Junction, Afar (Dijibouti)	44	Deniel <i>et al</i> (1994)
19	1	39.1	25.5	Saudi Arabia (Harrat Kura)	3	Camp <i>et al</i> (1991)
20	1	40	25.8	Saudi Arabia (Khaybar and Ithnayn)	10	Camp <i>et al</i> (1991)
22	1	110	20.5	SE China (Haikang-HainanIs)	3	Liu <i>et al</i> (1994)
23	1	110.5	20	SE China (Hainan Island)	2	Fan and Hooper (1991)
24	1	118	24.5	E China (Longhai)	2	Fan and Hooper (1991)
24	1	118	24.5	SE China (Niutoushan)	8	Zou <i>et al</i> (2000)
25	1	119.5	23.6	Taiwan Strait (Penghu Islands)	1	Chung <i>et al</i> (1994)
25	1	119.5	23.6	China (Penghu Island)	1	Chung <i>et al</i> (1994)
26	1	121.5	24.9	Taiwan Strait (NW Taiwan)	1	Chung <i>et al</i> (1994)
27	1	122	25	Taiwan (Kungkuan)	8	Chung <i>et al</i> (1995)
28	1	118	26	Taiwan Strait (Mt. Fujian)	3	Chung <i>et al</i> (1994)
28	1	118	26	China (Fujian)	1	Chung <i>et al</i> (1994)
29	1	117	26.5	E China (Mingxi)	4	Zou <i>et al</i> (2000)
29	1	117	26.5	E China (Mingxi)	1	Liu <i>et al</i> (1994)
29	1	117	26.5	E China (Minxi)	1	Fan and Hooper (1991)
30	1	118.5	28	E China (Songxi)	2	Peng <i>et al</i> (1986)
30	1	118.5	28	E China (Longyou-Xilong)	4	Zou <i>et al</i> (2000)
31	1	120	27.5	E China (Minqing)	1	Fan and Hooper (1991)
32	1	121	30	E China (Xinchang)	2	Fan and Hooper (1991)
33	1	118.5	31.5	E China (Anhui-Jiangsu)	2	Peng <i>et al</i> (1986)
34	1	118.5	33	E China (Nushan-Fangshan)	3	Liu <i>et al</i> (1994)
34	1	118.5	33	E China (Jiashan-Xuyi-Liuhe)	4	Fan and Hooper (1991)
34	1	118.5	33	E China (Nushan-Tashan-Fangshan)	10	Zou <i>et al</i> (2000)
35	1	120	37.5	E China (Shandong)	10	Peng <i>et al</i> (1986)
36	1	121	37.5	E China (Xixia)	1	Liu <i>et al</i> (1994)
36	1	121	37.5	E China (Penlai-Qixia-Wudi-Linqu)	5	Fan and Hooper (1991)
37	1	113.5	40.5	E China (Fanzhi-Datong-Jining)	5	Fan and Hooper (1991)

Table 1. (Continued).

Site #	Figure #	Longitude (°)	Latitude (°)	Country/Province	No. of samples	Reference
38	1	114	40.5	E China (Hanobar-Datong)	6	Basu <i>et al</i> (1991)
39	1	114	41	E China (Hannuoba)	67	Zhi <i>et al</i> (1990)
39	1	114	41	E China (Hannuoba)	3	Liu <i>et al</i> (1994)
39	1	114	41	E China (Hannuoba)	2	Fan and Hooper (1991)
40	1	117.5	41.5	E China (Pinquan)	3	Fan and Hooper (1991)
41	1	117	42	E China (Weichang)	4	Fan and Hooper (1991)
42	1	118	42.5	N China (Chifeng)	8	Han <i>et al</i> (1999)
43	1	123	40.5	E China (Liaoning)	2	Peng <i>et al</i> (1986)
44	1	126	41	E China (Kuandian)	5	Liu <i>et al</i> (1994)
44	1	126	41	E China (Kuandian)	1	Fan and Hooper (1991)
45	1	125	42.5	NE China (Huinan-Dadung-Fushun-Qingyan)	7	Liu <i>et al</i> (1994)
46	1	125	43.5	E China (Jilin)	1	Peng <i>et al</i> (1986)
46	1	125	43.5	NE China (Changchuen-Shuanlia-Yitong)	5	Fan and Hooper (1991)
47	1	128	42	NE China (Kirin)	13	Hsu <i>et al</i> (2000)
48	1	130.5	43.5	NE China (Wangqing)	2	Fan and Hooper (1991)
49	1	130	44	NE China (Mudanjiang-Wangqing)	10	Liu <i>et al</i> (1994)
50	1	129.5	44.5	E China (Heilongjiang)	1	Peng <i>et al</i> (1986)
51	1	127	48	NE China (Kuandian)	5	Liu <i>et al</i> (1992)
51	1	127	48	E China (Kundian)	5	Basu <i>et al</i> (1991)
52	1	126	50	NE China (WEK)	6	Zhang <i>et al</i> (1995)
52	1	126	50	NE China (Wudalianchi-Changbaishan)	5	Basu <i>et al</i> (1991)
52	1	126	50	NE China (Wudalianchi)	1	Liu <i>et al</i> (1994)
112	2	29.2	-1.4	East African Rift (Nyamuragira Volcano)	12	Aoki <i>et al</i> (1985)
113	2	29.4	-1.5	Karisimbi Volcano (East African Rift)	16	De Mulder <i>et al</i> (1986)
114	2	28.9	-2.45	Bukavo, Zaire (East African Rift)	4	Auchapt <i>et al</i> (1987)
115	2	36.3	-3.1	Kamituga, Zaire (East African Rift)	5	Auchapt <i>et al</i> (1987)
116	2	36	-2.1	Kenya Rift (Shombole volcano)	3	Bell and Peterson (1991)
117	2	36.3	-1.8	Southern Kenya Rift (East African Rift)	20	Le Roex <i>et al</i> (2001)
173	3	246	30.47	San Quintin volcanic field	32	Luhr <i>et al</i> (1995)
174	3	246	30.5	San Quintin volcanic field	12	Storey <i>et al</i> (1989)
175	3	243.5	34.5	Northern Basin and Range, USA (Mojave Desert)	1	Kempton <i>et al</i> (1991)
176	3	245	35	Basin and Range, USA*	2	Fitton <i>et al</i> (1991)
177	3	245	36	Basin and Range, USA	12	Feuerbach <i>et al</i> (1993)
178	3	246.9	35.8	Northeastern Transition Zone, USA (Grand Canyon)	2	Kempton <i>et al</i> (1991)
179	3	246.6	34.5	Basin and Range, USA (Kaiser Spring Field)	4	Moyer and Esperana (1989)
180	3	248.2	34.8	Southeastern Transition Zone, USA (San Francisco Field)	3	Kempton <i>et al</i> (1991)
181	3	250	35	Colorado Plateau, USA	3	Fitton <i>et al</i> (1991)
182	3	250.5	33.6	Southeastern Transition Zone, USA (Springerville and San Carlos Field)	5	Kempton <i>et al</i> (1991)
183	3	243.28	37.07	Hurricane volcanic field (The Divide)	14	Smith <i>et al</i> (1999)

Table 1. (Continued).

Site #	Figure #	Longitude (°)	Latitude (°)	Country/Province	No. of samples	Reference
184	3	243.3	37.1	Hurricane volcanic field (Remnants)	5	Smith <i>et al</i> (1999)
185	3	243.32	37.07	Hurricane volcanic field (Grass Valley)	12	Smith <i>et al</i> (1999)
186	3	242.33	37.16	Hurricane volcanic field (Ivan's Knoll)	9	Smith <i>et al</i> (1999)
187	3	243.3	37.19	Hurricane volcanic field (Radio Towers)	8	Smith <i>et al</i> (1999)
188	3	243.34	37.17	Hurricane volcanic field (Volcano Mountain)	5	Smith <i>et al</i> (1999)
189	3	243.35	37.18	Hurricane volcanic field (Cinder pits)	6	Smith <i>et al</i> (1999)
190	3	244.1	37.9	Northern Basin and Range, USA (Lunar craters)	1	Kempton <i>et al</i> (1991)
191	3	247	42.5	Snake River Plane, USA	2	Fitton <i>et al</i> (1991)
191	3	247	42.5	Snake River Plane, USA	8	Lum <i>et al</i> (1989)
192	3	247.5	37.5	Transition Zone, USA	2	Fitton <i>et al</i> (1991)
193	3	247.7	37.5	Northeastern Transition Zone, USA (Southwest Utah)	11	Kempton <i>et al</i> (1991)
194	3	250	39	Lunar Crater Volcanic Field, USA	15	Lum <i>et al</i> (1989)
195	3	252.5	40	Rio Grande Rift, USA (Northwest Colorado)	3	Gibson <i>et al</i> (1992)
196	3	253	39.3	Southern Rocky Mountains, USA	3	Fitton <i>et al</i> (1991)
197	3	256.5	36.5	Great Planes, USA	2	Fitton <i>et al</i> (1991)
198	3	254.4	36.8	Rio Grande Rift, USA (Latir Volcanic Field)	3	Johnson and Lipman (1988)
199	3	254.4	35.8	Jemez Volcanic Field, USA	1	Singer and Kudo (1986)
200	3	253.5	36	Rio Grande Rift, USA (Northern New México)	11	Gibson <i>et al</i> (1992)
200	3	253.5	36	Rio Grande Rift (Cerros del Rio Volcanic Field)	7	Duncker <i>et al</i> (1991)
201	3	253.49	35.49	Rio Grande Rift (Santa Ana mesa)	1	Perry <i>et al</i> (1987)
202	3	252.3	35.22	Mount Taylor Volcanic Field, USA	5	Perry <i>et al</i> (1990)
203	3	252.35	35.21	Rio Grande Rift (Mount Taylor)	2	Perry <i>et al</i> (1987)
204	3	252.69	35.05	Rio Grande Rift	1	Perry <i>et al</i> (1987)
205	3	252.6	34.8	Southeastern Transition Zone, USA (Mount Taylor)	3	Kempton <i>et al</i> (1991)
206	3	253.2	34.87	Rio Grande Rift (Cat Hills)	1	Perry <i>et al</i> (1987)
207	3	253.5	34.6	Rio Grande Rift, USA	3	Kempton <i>et al</i> (1991)
208	3	253	33	Rio Grande Rift, USA (Southern New México)	13	Gibson <i>et al</i> (1992)
209	3	252.8	32.5	Rio Grande Rift (Southern Rio Grande Rift)	15	McMillan <i>et al</i> (2000)
210	3	252.8	31.5	Rio Grande Rift, USA (Potrillo)	3	Kempton <i>et al</i> (1991)
211	3	250.8	31	Southern Basin and Range, USA (Geronimo Field)	1	Kempton <i>et al</i> (1991)
300	4	242.1	-76.7	Mary Byrd Land Antarctica (Crary Mountains)	6	Panter <i>et al</i> (2000)
Ocean island						
141	2	3.41	-54.43	Bouvet Islands	6	Le Roex and Erlank (1982)
141	2	3.41	-54.43	Bouvet Islands	5	Verwoerd <i>et al</i> (1976)
150	2	77.55	-37.83	Indian Ocean (Amsterdam Island)	6	Doucet <i>et al</i> (2004)
151	2	77.5	-38.75	Indian Ocean (St. Paul Island)	11	Doucet <i>et al</i> (2004)

Table 1. (Continued).

Site #	Figure #	Longitude (°)	Latitude (°)	Country/Province	No. of samples	Reference
162	3	200.48	22.1	Hawaiian Islands (Kauai)	18	Maaløe et al (1992)
163	3	202	21.7	Hawaiian Islands (Koolau volcano)	20	Frey et al (1994)
164	3	203.12	20.86	Hawaiian Islands (Lanai, Wawaeku)	11	West et al (1992)
165	3	203.75	20.72	Hawaiian Islands (Haleakala)	24	Chen et al (1991)
165	3	203.75	20.72	Hawaiian Islands (Haleakala)	29	Chen et al (1990)
166	3	203.79	20.39	Hawaiian Islands (Hana)	22	Bergmanis et al (2000)
167	3	204	19.79	Hawaiian Islands (Hualalai)	2	Norman and Garcia (1999)
168	3	204.46	19.2	Hawaiian Islands	15	Lipman et al (1990)
169	3	204.71	19.42	Hawaiian Islands (Kilauea)	69	Garcia et al (1992)
170	3	204.73	19.41	Hawaiian Islands (Kilauea)	2	Norman and Garcia (1999)
171	3	204.74	18.93	Hawaiian Islands (Loihi)	1	Norman and Garcia (1999)
172	3	249.05	18.78	Socorro Islands, Pacific Ocean	14	Bohrson and Reid (1995)
224	3	268.5	0.03	Galapagos Islands; Isabela (Volcan Ecuador)	1	White et al (1993)
225	3	268.7	0.03	Galapagos Islands, Isabela (Volcan Wolf)	1	White et al (1993)
226	3	268.77	0.25	Galapagos Islands, Isabela (Volcan Darwin)	1	White et al (1993)
227	3	269.25	0.6	Galapagos Islands (Pinta)	5	Cullen and McBirney (1987)
228	3	270.1	0.4	Galapagos Islands (Genovesa)	1	White et al (1993)
263	3	343	65.8	Iceland (Sroraviti, Grjothals, Gaesafjoll)	45	Slater et al (1998)
274	4	200.24	-18.85	French Polynesia (Aitutaki)	7	Dupuy et al (1989)
275	4	202.33	-20	French Polynesia (Atiu)	10	Dupuy et al (1989)
276	4	201.79	-22	French Polynesia (Mangaia)	11	Dupuy et al (1989)
277	4	207	-22.6	French Polynesia (Rimatara)	2	Dupuy et al (1988)
278	4	208.9	-22.7	French Polynesia (Rurutu)	3	Dupuy et al (1988)
278	4	208.9	-22.7	French Polynesia (Rurutu)	2	Dupuy et al (1989)
278	4	208.9	-22.7	French Polynesia (Rurutu)	5	Chauvel et al (1997)
279	4	210.7	-23.3	French Polynesia (Tubuai)	1	Dupuy et al (1988)
279	4	210.7	-23.3	French Polynesia (Tubuai)	2	Dupuy et al (1989)
280	4	212.2	-24	French Polynesia, Pacific (Raivavae)	22	Lassiter et al (2003)
280	4	212.2	-24	French Polynesia (Raivavae)	3	Dupuy et al (1988)
280	4	212.2	-24	French Polynesia (Raivavae)	2	Dupuy et al (1989)
281	4	208.34	-19.33	French Polynesia (Bora Bora)	3	Dupuy et al (1989)
282	4	208.5	-16.64	French Polynesia (Tahaa)	2	Dupuy et al (1989)
283	4	210.34	-17.33	French Polynesia, Pacific (Tahiti)	9	Hémond et al (1994)
284	4	210.5	-17	French Polynesia, Pacific (Moorea)	1	Hémond et al (1994)
285	4	211.18	-17.57	French Polynesia, Pacific (Teahitia)	26	Hémond et al (1994)
286	4	211.33	-18.32	French Polynesia, Pacific (Moua Pihaa)	13	Hémond et al (1994)
287	4	211.42	-17.65	French Polynesia, Pacific (Rocard)	2	Hémond et al (1994)
288	4	211.6	-18.3	French Polynesia (Society islands)	13	Cheng et al (1993)
289	4	211.92	-17.88	French Polynesia, Pacific (Mehetia)	23	Hémond et al (1994)
289	4	211.92	-17.88	French Polynesia (Mehetia)	2	Dupuy et al (1989)
290	4	219.3	-8	French Polynesia (Eiao)	1	Dupuy et al (1989)
291	4	219.34	-7.95	French Polynesia (Hatutu, Eiao)	8	Liotard et al (1986)
292	4	219.77	-9.88	French Polynesia (Ua Pou)	2	Dupuy et al (1989)

Table 1. (Continued).

Site #	Figure #	Longitude (°)	Latitude (°)	Country/Province	No. of samples	Reference
293	4	219.9	-9.15	French Polynesia (Nuku Hiva, Ua Pou)	5	Liotard <i>et al</i> (1986)
294	4	220.5	-8.9	French Polynesia (Ua Huka)	5	Ielsch <i>et al</i> (1998)
295	4	221	-9.65	French Polynesia (Fatu Huku, Hiva Ua)	6	Liotard <i>et al</i> (1986)
296	4	221.07	-9.43	French Polynesia (Fatu Huku)	1	Dupuy <i>et al</i> (1989)
297	4	215.59	-27.5	French Polynesia, Pacific (Rapa)	4	Hémond <i>et al</i> (1994)
297	4	215.59	-27.5	French Polynesia, Pacific (Rapa)	10	Lassiter <i>et al</i> (2003)
297	4	215.59	-27.5	French Polynesia (Rapa)	4	Dupuy <i>et al</i> (1988)
297	4	215.59	-27.5	French Polynesia (Rapa)	1	Dupuy <i>et al</i> (1989)
298	4	219.67	-28.12	French Polynesia, Pacific (Ra Seamount)	1	Hémond <i>et al</i> (1994)
299	4	219.5	-29	French Polynesia, Pacific (Macdonald)	29	Hémond <i>et al</i> (1994)
299	4	219.5	-29	French Polynesia, Pacific (Marotiri)	2	Hémond <i>et al</i> (1994)
299	4	219.5	-29	French Polynesia (Macdonald)	3	Dupuy <i>et al</i> (1988)
299	4	219.5	-29	French Polynesia (Macdonald)	1	Dupuy <i>et al</i> (1989)
326	4	268.9	-0.55	Galapagos Islands, Isabela (Sierra Negra)	1	White <i>et al</i> (1993)
327	4	268.94	-0.42	Galapagos Islands, Isabela (Volcan Alcedo)	1	White <i>et al</i> (1993)
328	4	269.33	-0.6	Galapagos Islands (Pinzon)	1	White <i>et al</i> (1993)
329	4	269.33	-0.25	Galapagos Islands (Santiago)	3	White <i>et al</i> (1993)
330	4	269.56	-1.29	Galapagos Islands (Floreana)	1	White <i>et al</i> (1993)
331	4	269.77	-0.6	Galapagos Islands (Santa Cruz)	4	White <i>et al</i> (1993)
332	4	270.35	-1.4	Galapagos Islands (Española)	1	White <i>et al</i> (1993)
333	4	270.55	-0.87	Galapagos Islands (San Cristóbal)	3	Geist <i>et al</i> (1986)
334	4	270.7	-0.75	Galapagos Islands (San Cristóbal)	1	White <i>et al</i> (1993)
MORB						
1	1	0.51	72.2	Mid Atlantic Ridge, Mohns ridge	6	Schilling <i>et al</i> (1983)
142	2	22.92	-52.79	Indian Ridge (central southwest; 17-26°E)	4	Mahoney <i>et al</i> (1992)
143	2	33.54	-46.56	Indian Ridge (central southwest; Andrew Bain-Prince Edward fracture zone area)	3	Mahoney <i>et al</i> (1992)
144	2	35.85	-44.82	Indian Ridge (central southwest; 36-39°E)	2	Mahoney <i>et al</i> (1992)
145	2	41.99	-42.69	Indian Ridge (central southwest; Discovery II fracture zone)	1	Mahoney <i>et al</i> (1992)
146	2	46.68	-38.54	Indian Ridge (central southwest; Indomed fracture zone to 50°E)	2	Mahoney <i>et al</i> (1992)
147	2	66.75	-27.08	Indian Ridge (Southwest ridge, Indian Ocean triple junction; Leg 5)	3	Price <i>et al</i> (1986)
148	2	70.04	-25.5	Indian Ridge (Indian Ocean triple junction; Leg 6)	8	Price <i>et al</i> (1986)
149	2	70.07	-25.38	Indian Ridge (central Indian ridge)	12	Dosso <i>et al</i> (1988)
212	3	251.27	22.87	East Pacific Rise (Site 483)	2	Cambon <i>et al</i> (1979)
213	3	252	22.77	East Pacific Rise (Site 482)	3	Cambon <i>et al</i> (1979)
214	3	252.1	22.72	East Pacific Rise (Site 485)	1	Cambon <i>et al</i> (1979)
215	3	252.25	9.82	East Pacific Rise 9°-10°N	6	Sims <i>et al</i> (2003)
216	3	255.69	9.83	East Pacific Rise 9°-10°N	4	Sims <i>et al</i> (2003)
217	3	255.7	9.84	East Pacific Rise 9°-10°N	2	Sims <i>et al</i> (2003)

Table 1. (Continued).

Site #	Figure #	Longitude (°)	Latitude (°)	Country/Province	No. of samples	Reference
218	3	255.73	9.84	East Pacific Rise 9°–10°N	3	Sims <i>et al</i> (2003)
219	3	255.71	2.67	East Pacific Rise (RRR triple junction)	10	Lonsdale <i>et al</i> (1992)
220	3	261.93	2.28	Galapagos Spreading Center (96°–101°W)	6	Schilling <i>et al</i> (1982)
221	3	262.14	2.24	Galapagos Spreading Center (96°–101°W)	1	Verma and Schilling (1982)
222	3	266.85	2.29	Galapagos Spreading Center (91°–95°W)	16	Verma and Schilling (1982)
223	3	267.49	2.14	Galapagos Spreading Center (91°–95°W)	2	Schilling <i>et al</i> (1982)
229	3	270.18	0.39	Genovesa Ridge (Base of a large cone; dredge 22)	9	Harpp <i>et al</i> (2003)
230	3	270.21	0.46	Genovesa Ridge (Base of the N. ridge flank; dredge 23)	7	Harpp <i>et al</i> (2003)
231	3	271.65	0.89	Galapagos Spreading Center (83°–90°W)	19	Verma and Schilling (1982)
232	3	273.77	1.77	Galapagos Spreading Center (83°–90°W)	13	Schilling <i>et al</i> (1982)
243	3	319.17	10.62	Mid Atlantic Ridge (10–13°N)	2	Bougault <i>et al</i> (1988)
244	3	315.44	13.61	Mid Atlantic Ridge (10–15.5°N)	25	Dosso <i>et al</i> (1993)
245	3	315	14.06	Mid Atlantic Ridge (13.1–14.4°N)	6	Bougault <i>et al</i> (1988)
246	3	315.16	14.5	Mid Atlantic Ridge (14.5°N)	1	Bougault <i>et al</i> (1988)
247	3	313.45	17.41	Mid Atlantic Ridge (15.6–18.9°N)	27	Dosso <i>et al</i> (1993)
248	3	314.71	20.57	Mid Atlantic Ridge (19–22.9°N)	39	Dosso <i>et al</i> (1993)
249	3	315.1	23.1	MAR, Kane fracture zone (Older walls, southern rift valley)	4	Bryan <i>et al</i> (1981)
250	3	314.97	23.61	Mid Atlantic Ridge (23–25°N)	25	Dosso <i>et al</i> (1993)
251	3	314.97	23.62	MAR, Kane fracture zone (South wall)	7	Bryan <i>et al</i> (1981)
252	3	315.01	23.65	MAR, Kane fracture zone (North older walls)	1	Bryan <i>et al</i> (1981)
253	3	315.14	23.57	MAR, Kane fracture zone (Southern rift valley)	4	Bryan <i>et al</i> (1981)
254	3	313.61	23.85	MAR, Kane fracture zone (South older walls)	1	Bryan <i>et al</i> (1981)
255	3	313.79	23.91	MAR, Kane fracture zone (North wall)	4	Bryan <i>et al</i> (1981)
256	3	313.71	23.95	MAR, Kane fracture zone (Northern rift valley)	6	Bryan <i>et al</i> (1981)
257	3	316.7	28.91	MAR, Kane fracture zone (Older walls, northern rift valley)	2	Bryan <i>et al</i> (1981)
258	3	326.34	36.42	Mid Atlantic Ridge (AMAR rift valley)	3	Le Roex <i>et al</i> (1996)
259	3	326.7	36.73	Mid Atlantic Ridge (FAMOUS rift valley, Narrowgate)	2	Le Roex <i>et al</i> (1996)
260	3	327.51	38.73	Mid Atlantic Ridge (52–28°N)	71	Schilling <i>et al</i> (1983)
261	3	327.6	52.74	Mid Atlantic Ridge, Gibbs fracture zone	4	Schilling <i>et al</i> (1983)
262	3	333.51	61.81	Mid Atlantic Ridge, Reykjanes ridge	40	Schilling <i>et al</i> (1983)
263	3	342.92	68.42	Mid Atlantic Ridge, Kolbeinsey Ridge	26	Schilling <i>et al</i> (1983)

Table 1. (Continued).

Site #	Figure #	Longitude (°)	Latitude (°)	Country/Province	No. of samples	Reference
264	3	354.1	71.15	Mid Atlantic Ridge (Mohns Ridge) Platform ridge	2	Haase <i>et al</i> (1996)
266	3	358.31	72.38	Mid Atlantic Ridge (Mohns Ridge) 1.69°W	1	Haase <i>et al</i> (1996)
267	3	359.28	72.01	Mid Atlantic Ridge (Mohns Ridge) 0.54°W	5	Haase <i>et al</i> (1996)
301	4	239.92	-36.85	Chile Ridge, North Chile Ridge (Segment 3)	15	Bach <i>et al</i> (1996)
302	4	249.09	-37.77	Pacific Antarctic Ridge (PAR axis)	1	Hekinian <i>et al</i> (1997)
303	4	249.2	-37.49	Pacific Antarctic Ridge (PAR axis)	2	Hekinian <i>et al</i> (1997)
304	4	249.37	-36.91	Pacific Antarctic Ridge (PAR axis)	1	Hekinian <i>et al</i> (1997)
305	4	240.75	-30.67	East Pacific Rise	1	Engel and Engel (1964)
306	4	242.5	-28.98	East Pacific Rise	1	Engel and Engel (1964)
307	4	248.06	-28.77	East Pacific Rise 6°-30°S	3	Bach <i>et al</i> (1994)
308	4	248.09	-23.39	East Pacific Rise (Easter microplate; East rift)	2	Hekinian <i>et al</i> (1996)
309	4	248.48	-23.31	East Pacific Rise (Easter microplate; Pito seamount)	3	Hekinian <i>et al</i> (1996)
310	4	246.32	-23.24	East Pacific Rise (Easter microplate; microplate interior)	1	Hekinian <i>et al</i> (1996)
311	4	248.34	-23	East Pacific Rise (Easter microplate; Pito deep)	1	Hekinian <i>et al</i> (1996)
312	4	247.34	-21.99	East Pacific Rise 6°-30°S	7	Bach <i>et al</i> (1994)
313	4	246.32	-21.96	East Pacific Rise (Easter microplate; thrust-fault)	1	Hekinian <i>et al</i> (1996)
314	4	246.67	-18.42	East Pacific Rise	1	Engel and Engel (1964)
315	4	245.63	-18.25	East Pacific Rise 6°-30°S	10	Bach <i>et al</i> (1994)
316	4	246.62	-14.62	East Pacific Rise 6°-30°S	7	Bach <i>et al</i> (1994)
317	4	249.05	-12.87	East Pacific Rise	1	Engel and Engel (1964)
318	4	247.36	-11.11	East Pacific Rise 6°-30°S	6	Bach <i>et al</i> (1994)
319	4	251.84	-7.78	East Pacific Rise	1	Engel and Engel (1964)
320	4	252.03	-8.33	East Pacific Rise (8° 17'S, dredge 139)	1	Hall and Sinton (1996)
321	4	252.04	-8.25	East Pacific Rise (8° 17'S, dredge 145)	1	Hall and Sinton (1996)
322	4	252.06	-8.15	East Pacific Rise (8° 17'S, dredge 142)	1	Hall and Sinton (1996)
323	4	252.1	-8.29	East Pacific Rise (8° 17'S, dredge 140)	1	Hall and Sinton (1996)
324	4	252.16	-8.18	East Pacific Rise (8° 17'S, dredge 146)	1	Hall and Sinton (1996)
325	4	249.53	-7.31	East Pacific Rise 6°-30°S	5	Bach <i>et al</i> (1994)
335	4	267.57	-21.82	East Pacific Rise (Easter microplate; N. of thrust-fault)	1	Hekinian <i>et al</i> (1996)
336	4	263.29	-38.04	Chile Ridge, North Chile Ridge (Segment 2)	11	Bach <i>et al</i> (1996)
337	4	266.26	-38.71	Chile Ridge, North Chile Ridge (Segment 1)	12	Bach <i>et al</i> (1996)
338	4	267.57	-55.67	America-Antarctica Ridge (Conrad fracture zone, near Bouvet triple junction)	9	Le Roex and Dick (1981)
342	4	357.9	-54.17	Mid Atlantic Ridge (Ridge axis and fracture zones; 54°S)	20	Le Roex <i>et al</i> (1987)

Table 1. (Continued).

Site #	Figure #	Longitude (°)	Latitude (°)	Country/Province	No. of samples	Reference
343	4	355.48	-52.63	Mid Atlantic Ridge (Fracture zones; 52°S)	11	Le Roex <i>et al</i> (1987)
344	4	354.28	-51.45	Mid Atlantic Ridge (Fracture zones; 51°S)	9	Le Roex <i>et al</i> (1987)
345	4	353.96	-51.16	MAR, southern region (50.3–52.46°S)	16	Le Roux <i>et al</i> (2002b)
346	4	353.95	-51.11	MAR, southern region (50.3–54.4°S)	66	Le Roux <i>et al</i> (2002a)
347	4	352.02	-49.69	MAR, southern region (49.3–50.0°S)	39	Le Roux <i>et al</i> (2002a)
348	4	351.97	-49.57	MAR, southern region (49.3–50.0°S)	6	Le Roux <i>et al</i> (2002b)
349	4	349.92	-48.34	MAR, southern region (47.4–49.2°S)	14	Le Roux <i>et al</i> (2002b)
350	4	349.91	-48.2	MAR, southern region (47.4–49.2°S)	71	Le Roux <i>et al</i> (2002a)
351	4	347.1	-47.12	MAR, central region (46.9–47.45°S)	6	Le Roux <i>et al</i> (2002b)
352	4	346.57	-47.06	MAR, central region (46.9–47.45°S)	14	Le Roux <i>et al</i> (2002a)
353	4	346.15	-46.14	MAR, northern region (43.4–46.6°S)	11	Le Roux <i>et al</i> (2002b)
354	4	345.95	-45.97	MAR, northern region (43.4–46.6°S)	33	Le Roux <i>et al</i> (2002a)
355	4	343.72	-42.8	MAR, northern region (40.6–44.8°S)	41	Le Roux <i>et al</i> (2002a)
356	4	343.78	-42.75	MAR, northern region (40.6–44.8°S)	8	Le Roux <i>et al</i> (2002b)

Table 2. Sample sizes in the training and testing sets and comparison with our earlier work.

Group		Training set		Testing set		Total	
Name	Number	This work	Agrawal <i>et al</i> (2004)	This work	Agrawal <i>et al</i> (2004)	This work	Agrawal <i>et al</i> (2004)
IAB	(1)	363	224	100	25	463	249
CRB	(2)	671	209	100	25	771	234
OIB	(3)	472	227	100	25	572	252
MORB	(4)	826	399	100	25	926	424
Total		2332	1059	400	100	2732	1159

IAB = island arc basic rock; CRB = continental rift basic rock; OIB = ocean island basic rock and MORB = mid-ocean ridge basic rock. The numbers in parentheses are group numbers discussed in the text.

turn, depends on the resulting rock type. Because most persons have not used SINCLAS, we once again emphasize that it is not easy to rely on a hand calculator or some simple computer program because the proper Fe-adjustment requires an iterative process. To remind the user about this basic need, we have called the new major-element array with the subscript _{adj}, such as (SiO₂)_{adj} for SiO₂, and so on.

3. Data processing

3.1 The need for transformation of the compositional data

As pointed out in the Introduction section, we should think in terms of ratios and abandon the traditional way of looking at the compositions in terms of percentages (major-elements), or ppm,

Table 3. Means and standard deviations of log-transformed major element ratios for the four group sets IAB-CRB-OIB-MORB.

Log _e -transformed ratio variable	IAB (1) (n = 463)		CRB (2) (n = 771)		OIB (3) (n = 572)		MORB (4) (n = 926)	
	mean	s	mean	s	mean	s	mean	s
ln(TiO ₂ /SiO ₂) _{adj}	-4.03	0.27	-3.05	0.30	-2.90	0.43	-3.56	0.26
ln(Al ₂ O ₃ /SiO ₂) _{adj}	-1.06	0.12	-1.17	0.10	-1.24	0.16	-1.19	0.08
ln(Fe ₂ O ₃ /SiO ₂) _{adj}	-3.38	0.15	-3.08	0.20	-3.15	0.21	-3.40	0.14
ln(FeO/SiO ₂) _{adj}	-1.82	0.14	-1.64	0.19	-1.58	0.17	-1.80	0.14
ln(MnO/SiO ₂) _{adj}	-5.61	0.20	-5.58	0.20	-5.56	0.16	-5.69	0.18
ln(MgO/SiO ₂) _{adj}	-2.02	0.39	-1.81	0.36	-1.8	0.5	-1.88	0.15
ln(CaO/SiO ₂) _{adj}	-1.50	0.14	-1.61	0.20	-1.51	0.18	-1.48	0.09
ln(Na ₂ O/SiO ₂) _{adj}	-3.02	0.24	-2.67	0.25	-2.91	0.33	-2.95	0.15
ln(K ₂ O/SiO ₂) _{adj}	-4.4	0.8	-3.6	0.6	-4.4	1.0	-5.7	0.9
ln(P ₂ O ₅ /SiO ₂) _{adj}	-5.7	0.7	-4.5	0.5	-4.9	0.7	-5.83	0.43

Subscript adj refers to the concentrations recalculated to an anhydrous 100% adjusted basis using computer program SINCLAS employing the Middlemost (1989) recommendation for iron-oxidation ratio adjustment (Verma *et al* 2002). This was done prior to the log transformation of the data. Rounding of mean values was done according to the corresponding standard deviation (s) data (Verma 2005). Tectonic settings, group numbers, and the number of compiled samples (*n*) are the same as in table 2.

or other concentration units (trace elements). The percentage data occupy a restricted region of sample space; the ratios allow them to spread more freely through this space. In fact, the calculation of log-ratios has the consequence of freeing space values from a restricted range to vary between $-\infty$ and $+\infty$, which is a highly desirable property for most statistical inferences including the discriminant analysis. Aitchison (1986) proposed that compositional data should be expressed as the covariances of log-ratios of the variables rather than the raw percentages. Thus, we decided to ratio every variable against a common divisor. According to Aitchison (1986) the choice of a variable as the divisor is immaterial because only the structure of the ratio matrix is important. For our major-element data, we decided to use the most abundant part SiO₂ as the divisor and then to transform the ratio data using log_e (natural logarithm base e, or ln). In fact, we experimented with several other variables as the divisor and obtained similar results. We did not experiment with other types of logarithms such as log₁₀, but they should yield similar final results. Thus, our final variables for the discriminant analysis were (one less than the original variables): ln(TiO₂/SiO₂)_{adj}, ln(Al₂O₃/SiO₂)_{adj}, ln(Fe₂O₃/SiO₂)_{adj}, ln(FeO/SiO₂)_{adj}, ln(MnO/SiO₂)_{adj}, ln(MgO/SiO₂)_{adj}, ln(CaO/SiO₂)_{adj}, ln(Na₂O/SiO₂)_{adj}, ln(K₂O/SiO₂)_{adj}, and ln(P₂O₅/SiO₂)_{adj}. Although the adjustment factor (_{adj}) will cancel out from the ratios of concentration data, this is to remind the reader that the calculation of Fe₂O₃ and FeO using the Middlemost option (Verma

et al 2002) is still a recommended, probably a mandatory step during the application procedure.

3.2 Comparison of log-transformed major-element ratios of basic rocks from different tectonic settings

Instead of reporting the average major-element compositions and corresponding standard deviation values, we present the basic statistical information of log_e-transformed major-element ratios of the four tectonic types of basic rocks (table 3). Note all mean values are negative because the divisor (SiO₂) used was the most abundant element rendering all ratios to be <1 , and consequently their logarithms to be negative. The Student t test (for ANOVA or F value test, see below) revealed that for most ratios, there were statistically significant differences between the mean values from different tectonic settings. However, the smallest differences were observed between the CRB and OIB, or the OIB and MORB groups, making any simple bivariate or ternary plots of these log_e-transformed ratios unsuccessful in discriminating between these four tectonic settings (plots not shown). Therefore, multivariate techniques such as linear discriminant analysis, were actually required to obtain meaningful discrimination of these settings.

Another way of looking at these data is to determine if the geochemical variation within the group is low compared to that between groups. Table 4 shows Wilk's lambda, also called U-statistic, and represents the ratio of the within-group sum of

Table 4. Test for equality of group means.

Log _e -transformed ratio variable	Wilks' Lambda	F-ratio	Significance
$\ln(\text{TiO}_2/\text{SiO}_2)_{\text{adj}}$	0.3991	1168	0.0000
$\ln(\text{Al}_2\text{O}_3/\text{SiO}_2)_{\text{adj}}$	0.8100	182	0.0000
$\ln(\text{Fe}_2\text{O}_3/\text{SiO}_2)_{\text{adj}}$	0.6005	516	0.0000
$\ln(\text{FeO}/\text{SiO}_2)_{\text{adj}}$	0.7320	284	0.0000
$\ln(\text{MnO}/\text{SiO}_2)_{\text{adj}}$	0.9146	73	0.0000
$\ln(\text{MgO}/\text{SiO}_2)_{\text{adj}}$	0.9392	50	0.0000
$\ln(\text{CaO}/\text{SiO}_2)_{\text{adj}}$	0.8910	95	0.0000
$\ln(\text{Na}_2\text{O}/\text{SiO}_2)_{\text{adj}}$	0.7627	241	0.0000
$\ln(\text{K}_2\text{O}/\text{SiO}_2)_{\text{adj}}$	0.4777	848	0.0000
$\ln(\text{P}_2\text{O}_5/\text{SiO}_2)_{\text{adj}}$	0.4979	783	0.0000

Because SiO₂ was used for log transformations, this row is absent. Wilks' Lambda (U-statistic) and univariate F-ratio with degrees of freedom, DF1 = $g - 1 = 4 - 1 = 3$ and DF2 = $n - g = 2332 - 4 = 2328$, where g is the number of groups and n is the total number of samples.

squares to the total sum of squares (therefore, this statistic can have values between 0 and 1). A lambda of 1 is observed when all group means are equal, whereas small values close to zero signify that within-group variability is small compared to the total variability. In other words, large values of lambda indicate that group means are not statistically different, whereas small values indicate the opposite. The Wilk's lambda values for most log_e-transformed major-element ratios are much lower than 1, indicating that their group means are different.

Yet another statistic (table 4) is the significance test for the equality of group means for each ratio. The F value is obtained by dividing the between-group variation by within-group variation. The observed significance level (0.0000; table 4) for every log_e-transformed ratio is less than 0.01 (even < 0.0001), the hypothesis (H_0) that all group means are equal is rejected in each case at the confidence level of 99% (even at the highest confidence level of 99.99%). This means that, in theory, each ratio can be considered as a possible candidate for predictor variable in the discriminant analysis.

3.3 Selection of predictor variables, number of groups considered simultaneously, discriminant score, and classification rule

The rest of our procedure was similar to the one described in detail by Agrawal *et al* (2004). The success of discriminant analysis depends on selection of appropriate predictor variables. This selection was based on the test of Wilk's lambda, and these variables were selected by a stepwise method, with minimization of Wilk's lambda as the criterion for variable selection. At each step the variable

that resulted in the smallest lambda for the discriminant function was selected.

The use of discriminant functions is advantageous because each discriminant function can represent several of the compositional variables. The discriminant analysis is one of the statistical multivariate techniques most commonly used to distinguish between members of different, pre-defined, groups or classes, on the basis of observations regarding them. The actual aim in mathematical terms is to summarize p-dimensional observations from g classes on a one-dimensional linear function that discriminates between these classes by some measure of maximum separation, and later serves the purpose of classifying samples of unknown classes. An 'unknown' class should be one of the classes that were actually used for the discriminant analysis to begin with. Although the concept of discriminant analysis is simple, more details on linear discriminant analysis, being highly mathematical and complex, are probably beyond the scope of the present paper; these can be consulted in standard books on multivariate techniques such as Morrison (1990) and Reyment and Savazzi (1997). Finally, as in Agrawal *et al* (2004) we used the SPSS/PC+ statistical package for performing the discriminant analysis.

We performed the discriminant analysis for all combinations of the four groups by taking only four and three groups at a time. The discriminant score (D) of the individual case in each group can be obtained as:

$$D = B_1X_1 + B_2X_2 + \dots + B_pX_p + B_0, \quad (1)$$

where X_i is the value of the log_e-transformed i th major-element ratio (e.g., the first ratio is $\ln(\text{TiO}_2/\text{SiO}_2)_{\text{adj}}$), B_i is the i th discriminant

function coefficient, and B_0 is a constant. These p coefficients and the constant can have positive or negative values. The discriminant analysis makes use of all or some of the available \log_e -transformed major-element ratios (X'_i 's) and fixes the best values of B_i for each chosen X_i to obtain the maximum separation between all groups.

If g groups are involved in discriminant analysis, $g-1$ discriminant functions are obtained. The number of discriminant functions in three- and four-group discriminant analyses, therefore, are 2 and 3 respectively. The discriminant scores D1, D2, and D3 were calculated using equation (1). From the discriminant scores, the mean discriminant scores for the groups, known as group centroids, were calculated.

The rule for classifying a given basic rock sample into one of the tectonic groups was obtained from its discriminant score D . The probability that a basic rock with a score D belongs to group i is estimated by:

$$P(g_i/D) = P(D/g_i)P(g_i) \quad (2)$$

where $P(g_i/D)$ is the posterior probability, $P(D/g_i)$ is the conditional probability, and $P(g_i)$ is the prior probability.

The prior probability – an estimate of the likelihood that a case belongs to a particular group when no information is available – was assumed to be equal for all groups. The conditional probability $P(D/g_i)$ of D for a given group is calculated from the probability of obtaining a particular discriminant score value D if the case is a member of that group, under the assumption that the discriminant scores of the cases used in the analysis are normally distributed and the parameters of the distribution can be estimated from the mean discriminant scores. The case is assumed to belong to a particular group and the probability of the observed score for that particular membership is estimated. From these prior and conditional probabilities, the posterior probability $P(g_i/D)$ is then estimated using Bayes' rule. From its discriminant score D , a case is classified in a group for which the posterior probability is largest.

Finally, concerning field boundaries in geochemical discrimination diagrams, Agrawal (1999) argued at length that the practice of defining assignment rules with the least precise and subjective method of eye-fitted lines must be abandoned. He illustrated the proposed statistical method using a simple case of two variables from two classes. We have adopted this approach to draw probability based boundaries in our diagrams.

4. Results of the discriminant analysis

Table 5 shows the results of the discriminant analysis of the present database and their comparison with our earlier work (Agrawal *et al* 2004). In the first column, the rows marked A are for Agrawal *et al* (2004). The results of the rows B were obtained in exactly the same manner as in Agrawal *et al* (2004), i.e., using major-element concentrations, but from the extended database. Finally, the rows C correspond to the results using \log_e -transformation of the major-element ratios from exactly the same database as in rows B.

The discriminant analysis was performed five times using the training set: once for all four tectonic groups; and four times for all possible combinations of three groups taken at a time. All ratios were found to be useful as predictor variables under the criterion of reduction of Wilk's lambda for the discriminant function. Then, the assignment rules from the discriminant analysis of the training set were used to classify samples of the testing set, treating them as 'unknown' cases.

The rates of correct classification of the training as well as testing sets have been calculated, and are compared with our earlier work (table 5). The overall % success rate (rate of correct classification) for discriminant function diagrams proposed by Agrawal *et al* (2004) varied from ~83 to 93% (cases A in table 5). The same procedure for the larger dataset resulted in similar % success rates of ~82 to 94% (cases B in table 5). The \log_e -transformation procedure, however, provided higher overall % success rates of ~83 to 97% (in *all* cases C as compared to the respective cases B in table 5), suggesting that such a transformation is a statistically-correct procedure and, therefore, should be used in future for compositional data handling. However, small decreases in % success rates for some individual tectonic groups (6 out of a total of 32 cases; table 5) occur, the reason for which is not clear at present, but might be related to the statistical nature of the multivariate techniques. In this context, we must emphasize that these discriminant function diagrams should be used on this very statistical basis, i.e., by taking into account that the boundaries are statistically-based and a given field at best encloses only a certain percentage of and *not all* rock samples from a given setting (e.g., for our new diagrams 83 to 97% of samples used for the training or testing sets). This will be better illustrated in the application section of this paper.

Table 5. Assessment of correct classification (%) between the IAB (1), CRB (2), OIB (3), and MORB (4) groups.

Dataset	Group	Set	<i>n</i>	IAB (1)	CRB (2)	OIB (3)	MORB (4)	Overall
A	1-2-3-4	Training	1059	80.8	70.3	80.6	93.0	83.3
B	1-2-3-4	Training	2332	81.8	70.9	77.3	93.8	82.0
C	1-2-3-4	Training	2332	90.4	77.9	76.7	94.8	85.6
A	1-2-3-4	Testing	100	84.0	80.0	88.0	92.0	86.0
B	1-2-3-4	Testing	400	91.0	78.0	73.0	94.0	84.0
C	1-2-3-4	Testing	400	94.0	84.0	71.0	97.0	86.5
A	1-2-3	Training	660	84.0	79.4	79.7		85.0
B	1-2-3	Training	1506	92.6	77.9	79.9		82.1
C	1-2-3	Training	1506	91.2	80.0	85.0		84.3
A	1-2-3	Testing	75	92.0	88.0	84.0		85.0
B	1-2-3	Testing	300	94.0	78.0	79.0		83.7
C	1-2-3	Testing	300	94.0	83.0	83.0		86.7
A	1-2-4	Training	832	80.8	84.7		93.5	87.9
B	1-2-4	Training	2332	84.8	84.2		94.1	88.7
C	1-2-4	Training	2332	91.2	91.4		97.6	94.1
A	1-2-4	Testing	75	88.0	96.0		92.0	92.0
B	1-2-4	Testing	400	92.0	94.0		95.0	93.7
C	1-2-4	Testing	400	94.0	97.0		99.0	96.7
A	1-3-4	Training	850	84.8		95.6	94.5	92.2
B	1-3-4	Training	1661	86.8		85.2	96.2	91.0
C	1-3-4	Training	1661	95.6		87.3	96.7	93.8
A	1-3-4	Testing	75	92.0		96.0	92.0	93.3
B	1-3-4	Testing	300	93.0		82.0	98.0	91.0
C	1-3-4	Testing	300	99.0		84.0	100.0	94.3
A	2-3-4	Training	835		71.8	82.4	97.5	86.9
B	2-3-4	Training	1969		76.6	78.0	98.4	86.1
C	2-3-4	Training	1969		81.1	76.9	96.0	86.3
A	2-3-4	Testing	75		76.0	88.0	96.0	86.7
B	2-3-4	Testing	300		79.0	72.0	98.0	83.0
C	2-3-4	Testing	300		83.0	71.0	99.0	84.7

A = results from Agrawal *et al* (2004); **B** = new results with larger dataset using raw data, and **C** = new results with larger dataset using \log_e transformation of ratios.

4.1 Discrimination between IAB-CRB-OIB-MORB groups

As in Agrawal *et al* (2004), we developed five new discriminant function diagrams for the four tectonic types of basic (and ultrabasic) rocks (IAB, CRB, OIB, and MORB). Figure 5 includes all four tectonic types of basic (and ultrabasic) rocks, whereas each of the four diagrams in figure 6(a-d) presents samples from three groups. Thus, each tectonic group appears in four of these five diagrams. Each diagram is a plot of two discriminant functions, DF1 and DF2, respectively in x- and y-axes. The discriminant functions reduce the dimensionality of the problem, in this case (figure 5) from 10 major-element ratio \log_e -transformed variables to two dimensions of discriminant functions DF1 and DF2. In this four-group discriminant analysis, which resulted in figure 5, three discriminant functions were obtained, but the first two functions accounted for 94.16% of between-group variability (table 6), the third function being relatively

insignificant (capable of explaining the remaining 5.84% of this variability). For three-group diagrams, the between-group variability is completely represented by two discriminant functions (table 7).

The classification rules in figure 5 are based on only two discriminant functions, DF1 and DF2 as follows (note the coefficients or the multiplication factors for each \log_e -transformed ratio after rounding to four decimal places are listed in table 6):

$$\begin{aligned}
 \text{DF1} = & -4.6761 \cdot \ln(\text{TiO}_2/\text{SiO}_2)_{\text{adj}} \\
 & + 2.5330 \cdot \ln(\text{Al}_2\text{O}_3/\text{SiO}_2)_{\text{adj}} \\
 & - 0.3884 \cdot \ln(\text{Fe}_2\text{O}_3/\text{SiO}_2)_{\text{adj}} \\
 & + 3.9688 \cdot \ln(\text{FeO}/\text{SiO}_2)_{\text{adj}} \\
 & + 0.8980 \cdot \ln(\text{MnO}/\text{SiO}_2)_{\text{adj}} \\
 & - 0.5832 \cdot \ln(\text{MgO}/\text{SiO}_2)_{\text{adj}}
 \end{aligned}$$

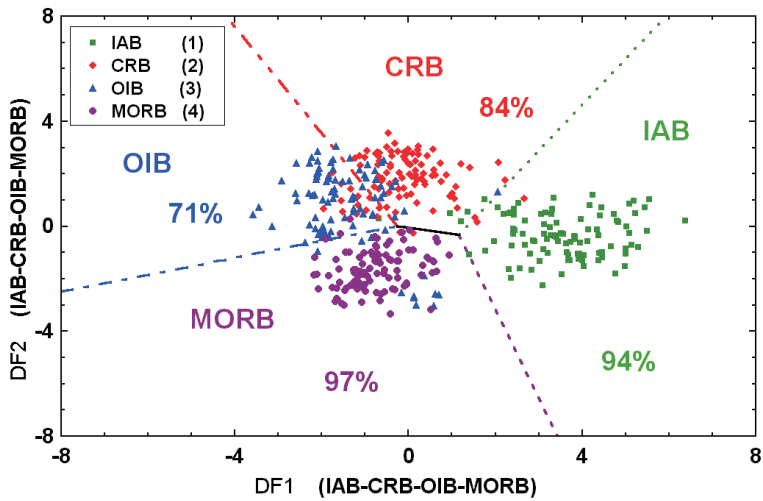


Figure 5. Diagram IAB–CRB–OIB–MORB (1–2–3–4) displaying samples of the testing set. The symbols are shown as inset. The coordinates (DF1, DF2) of the field boundaries are as follows: (1.160, –0.333) and (5.912, 8.000) for the boundary IAB–CRB; (–0.266, 0.020) and (–4.190, 8.000) for CRB–OIB; (–8.000, –2.490) and (–0.266, 0.020) for OIB–MORB; (1.160, –0.333) and (3.431, –8.000) for IAB–MORB; and (1.160, –0.333) and (–0.266, 0.020) for CRB–MORB. The percentages shown in this figure (IAB 94%, CRB 84%, OIB 71%, and MORB 97%) refer to the percentage of the correct classification for samples of the testing set (see table 5). Discriminant function coefficients are displayed in table 6; i.e., for computing the discriminant functions DF1 and DF2 for ‘unknown’ samples use equations (3) and (4) in the text.

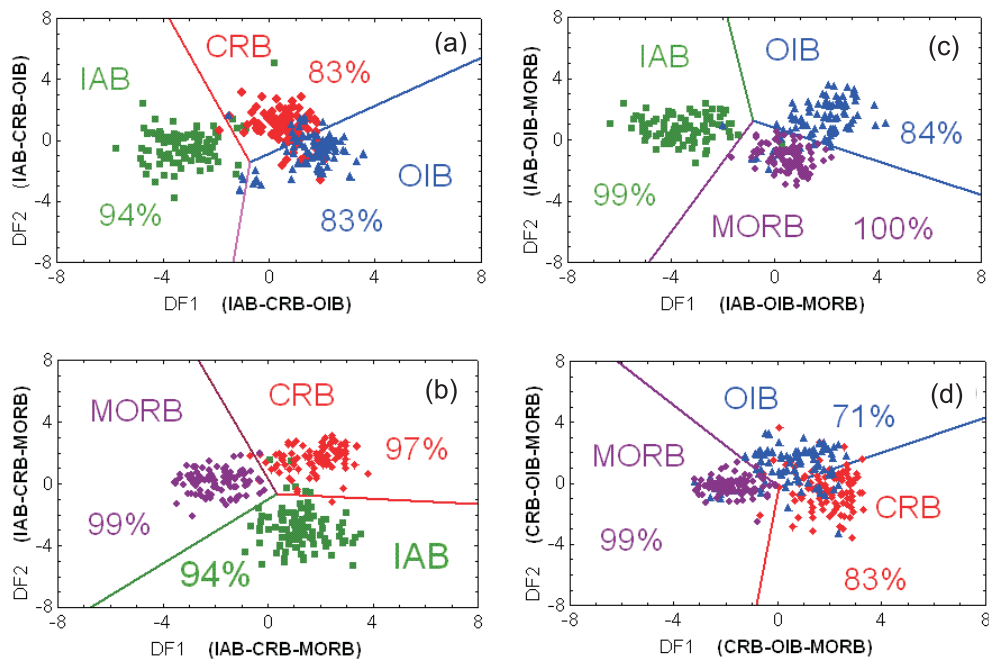


Figure 6. Three-groups at a time diagrams displaying samples of the testing set. The symbols are shown as inset. The percentages shown in this figure (e.g., IAB 94%, CRB 83%, and OIB 83% for the first diagram) refer to the percentage of the correct classification for samples of the testing set (see table 6). Discriminant function coefficients are displayed in table 6; i.e., for computing the discriminant functions DF1 and DF2 for ‘unknown’ samples use them analogously to construct new equations similar to equations (3) and (4) used for four groups. (a) Group IAB–CRB–OIB (1–2–3): (–0.733, –1.405) and (–3.788, 8.000) for the boundary IAB–CRB; (–0.733, –1.405) and (8.000, 5.428) for CRB–OIB; and (–1.343, –8.000) and (–0.733, –1.405) for IAB–OIB. (b) Group IAB–CRB–MORB (1–2–4): (8.000, –1.332) and (0.361, –0.619) for the boundary IAB–CRB; (–2.673, 8.000) and (0.361, –0.619) for CRB–MORB; and (–6.779, –8.000) and (0.361, –0.619) for IAB–MORB. (c) Group IAB–OIB–MORB (1–3–4): (–0.830, 1.224) and (–1.824, 8.000) for the boundary IAB–OIB; (–0.830, 1.224) and (8.000, –3.583) for OIB–MORB; and (–4.865, –8.000) and (–0.830, 1.224) for IAB–MORB. (d) Group CRB–OIB–MORB (2–3–4): (0.029, –0.222) and (8.000, 4.322) for the boundary CRB–OIB; (0.029, –0.222) and (–6.177, 8.000) for OIB–MORB; and (–0.819, –8.000) and (0.029, –0.222) for CRB–MORB.

Table 6. The discriminant function coefficients for the four group sets IAB-CRB-OIB-MORB.

Log _e -transformed ratio variable	DF1	DF2
ln(TiO ₂ /SiO ₂) _{adj}	-4.6761	0.6751
ln(Al ₂ O ₃ /SiO ₂) _{adj}	2.5330	4.5895
ln(Fe ₂ O ₃ /SiO ₂) _{adj}	-0.3884	2.0897
ln(FeO/SiO ₂) _{adj}	3.9688	0.8514
ln(MnO ₂ /SiO ₂) _{adj}	0.8980	-0.4334
ln(MgO ₂ /SiO ₂) _{adj}	-0.5832	1.4832
ln(CaO ₂ /SiO ₂) _{adj}	-0.2896	-2.3627
ln(Na ₂ O/SiO ₂) _{adj}	-0.2704	-1.6558
ln(K ₂ O/SiO ₂) _{adj}	1.0810	0.6757
ln(P ₂ O ₅ /SiO ₂) _{adj}	0.1845	0.4130
Constant	1.5445	13.1639
% of variance	55.15	39.01

The third function DF3 obtained in this analysis accounted for the remaining 5.84% between-groups variance.

$$\begin{aligned}
& - 0.2896 \cdot \ln(\text{CaO/SiO}_2)_{\text{adj}} \\
& - 0.2704 \cdot \ln(\text{Na}_2\text{O/SiO}_2)_{\text{adj}} \\
& + 1.0810 \cdot \ln(\text{K}_2\text{O/SiO}_2)_{\text{adj}} \\
& + 0.1845 \cdot \ln(\text{P}_2\text{O}_5/\text{SiO}_2)_{\text{adj}} + 1.5445 \quad (3)
\end{aligned}$$

$$\begin{aligned}
\text{DF2} = & 0.6751 \cdot \ln(\text{TiO}_2/\text{SiO}_2)_{\text{adj}} \\
& + 4.5895 \cdot \ln(\text{Al}_2\text{O}_3/\text{SiO}_2)_{\text{adj}} \\
& + 2.0897 \cdot \ln(\text{Fe}_2\text{O}_3/\text{SiO}_2)_{\text{adj}} \\
& + 0.8514 \cdot \ln(\text{FeO/SiO}_2)_{\text{adj}} \\
& - 0.4334 \cdot \ln(\text{MnO/SiO}_2)_{\text{adj}} \\
& + 1.4832 \cdot \ln(\text{MgO/SiO}_2)_{\text{adj}} \\
& - 2.3627 \cdot \ln(\text{CaO/SiO}_2)_{\text{adj}} \\
& - 1.6558 \cdot \ln(\text{Na}_2\text{O/SiO}_2)_{\text{adj}}
\end{aligned}$$

Table 7. The discriminant function coefficients for the three group discriminant analyses.

IAB-CRB-OIB (1-2-3)			IAB-CRB-MORB (1-2-4)		
Log _e -transformed ratio variable	DF1	DF2	Log _e -transformed ratio variable	DF1	DF2
ln(TiO ₂ /SiO ₂) _{adj}	3.9998	-1.3705	ln(TiO ₂ /SiO ₂) _{adj}	-1.5736	3.9844
ln(Al ₂ O ₃ /SiO ₂) _{adj}	-2.2385	3.0104	ln(Al ₂ O ₃ /SiO ₂) _{adj}	6.1498	0.2200
ln(Fe ₂ O ₃ /SiO ₂) _{adj}	0.8110	0.3239	ln(Fe ₂ O ₃ /SiO ₂) _{adj}	1.5544	1.1516
ln(FeO/SiO ₂) _{adj}	-2.5865	1.8998	ln(FeO/SiO ₂) _{adj}	3.4134	-2.2036
ln(MnO/SiO ₂) _{adj}	-1.2433	-1.9746	ln(MnO/SiO ₂) _{adj}	-0.0087	-1.6228
ln(MgO/SiO ₂) _{adj}	0.4872	1.4411	ln(MgO/SiO ₂) _{adj}	1.2480	1.4291
ln(CaO/SiO ₂) _{adj}	-0.3153	-2.2656	ln(CaO/SiO ₂) _{adj}	-2.1103	-1.2524
ln(Na ₂ O/SiO ₂) _{adj}	0.4325	1.8665	ln(Na ₂ O/SiO ₂) _{adj}	-0.7576	0.3581
ln(K ₂ O/SiO ₂) _{adj}	-1.0262	0.2872	ln(K ₂ O/SiO ₂) _{adj}	1.1431	-0.6414
ln(P ₂ O ₅ /SiO ₂) _{adj}	0.0514	0.8138	ln(P ₂ O ₅ /SiO ₂) _{adj}	0.3524	0.2646
Constant	-0.5718	1.8202	Constant	16.8712	5.0506
IAB-OIB-MORB (1-3-4)			CRB-OIB-MORB (2-3-4)		
Log _e -transformed ratio variable	DF1	DF2	Log _e -transformed ratio variable	DF1	DF2
ln(TiO ₂ /SiO ₂) _{adj}	5.3396	1.1799	ln(TiO ₂ /SiO ₂) _{adj}	-0.5183	5.0509
ln(Al ₂ O ₃ /SiO ₂) _{adj}	-1.6279	5.5114	ln(Al ₂ O ₃ /SiO ₂) _{adj}	4.9886	-0.4972
ln(Fe ₂ O ₃ /SiO ₂) _{adj}	0.8338	2.7737	ln(Fe ₂ O ₃ /SiO ₂) _{adj}	2.2204	1.0046
ln(FeO/SiO ₂) _{adj}	-4.7362	-0.1341	ln(FeO/SiO ₂) _{adj}	1.1801	-3.3848
ln(MnO/SiO ₂) _{adj}	-0.1254	0.6672	ln(MnO/SiO ₂) _{adj}	-0.3008	0.5528
ln(MgO/SiO ₂) _{adj}	0.6452	1.1045	ln(MgO/SiO ₂) _{adj}	1.3297	0.2925
ln(CaO/SiO ₂) _{adj}	1.5153	-1.7231	ln(CaO/SiO ₂) _{adj}	-2.1834	0.4007
ln(Na ₂ O/SiO ₂) _{adj}	-0.8154	-3.8948	ln(Na ₂ O/SiO ₂) _{adj}	-1.9319	-2.8637
ln(K ₂ O/SiO ₂) _{adj}	-0.8888	0.9471	ln(K ₂ O/SiO ₂) _{adj}	0.6976	-0.2189
ln(P ₂ O ₅ /SiO ₂) _{adj}	-0.2255	-0.1082	ln(P ₂ O ₅ /SiO ₂) _{adj}	0.8998	-1.0558
Constant	5.7755	15.4984	Constant	13.2625	2.8877

The two functions (DF1 and DF2) together account for 100% of between-group variance in all the above three-group analyses.

$$\begin{aligned}
 &+ 0.6757 \cdot \ln(\text{K}_2\text{O}/\text{SiO}_2)_{\text{adj}} \\
 &+ 0.4130 \cdot \ln(\text{P}_2\text{O}_5/\text{SiO}_2)_{\text{adj}} + 13.1639 \quad (4)
 \end{aligned}$$

Similarly, the discriminant function coefficients for the four diagrams of the three-group analyses (figure 6a–d) are given in table 7. Thus, the relevant functions can be easily constructed following the methodology of equations (3) and (4). In this study, all major-element ratios are involved in each of the five diagrams, whereas in our earlier discriminant analysis (Agrawal *et al* 2004) of raw data (major-element concentrations), the use of different major-elements (not all the elements under consideration) in a given diagram had resulted in minimization of the Wilk's lambda for the discriminant function.

Further, in figures 5 and 6(a–d), the line separating any two groups represents values of scores DF1 and DF2 that would yield equal posterior probabilities for the two groups, while the posterior probabilities for the other group(s) would be zero, except at the triple junction (point of intersection of three groups) where this probability belonging to the three groups is equal, i.e., $\sim 33.33\%$. As we move away from a field boundary into the field of a group, the posterior probability becomes highest for that group. The boundary lines in each diagram (figures 5 and 6a–d) are explicitly specified with their coordinates, which should facilitate their reproduction in diverse applications.

4.2 Comparison of linear discriminant analysis with classification trees

Recently, Vermeesch (2006) presented the use of classification trees for tectonic discrimination of basalts from three tectonic settings (IAB, OIB, and MORB) and opined that this method provides a better performance (higher success rates) in comparison with linear discriminant analysis. We consider this claim to be false because Vermeesch (2006) ignored the previously published discriminant analysis work by Agrawal *et al* (2004) who obtained very high success rates of 76 to 96% for the discrimination of even four (not just three) tectonic settings (IAB, CRB, OIB, and MORB). Further, the success rates obtained in our present work by using log-ratio transformations are even higher (82 to 97%) than those obtained without such transformations (76 to 96%), whereas Vermeesch (2006) reported only 84% and 89% success using two sets of classification trees. Therefore, at least in terms of the 'success rate' parameter the linear discriminant analysis is found to perform equally well, if not better than the method of classification trees. The concern that geochemical discriminant diagrams are often based on mean values of many analyses of a given area is also not relevant because

Agrawal *et al* (2004) did not use such a procedure, nor this has been done in our present work. Finally, Vermeesch (2006) also expressed concerns about the fact that the decision boundaries of most tectonic discrimination diagrams are drawn by eye. This is true for the references that Vermeesch cited, but certainly not so for the entire published literature on linear discriminant analysis because, as has been expressed in our paper, Agrawal (1999) and Agrawal *et al* (2004) used an objective statistically-based approach for drawing these boundaries. The same is the case of our present work. Evaluation of other so-called 'advantages' of classification trees pointed out by Vermeesch (2006) should await the completion of our future plans (see section 5.7 below).

4.3 Considerations on mis-classified samples in discrimination diagrams

Analytical errors inevitably present in all geochemical data constitute one major source of mis-classifications, especially for samples falling in a 'wrong' field at locations close to the field boundaries in figures 5 and 6(a–d). We hope that the international community establishes some basic rules to be followed for obtaining and reporting geochemical data along with the respective individual uncertainties, as has been attempted recently by Guevara *et al* (2005) for X-ray fluorescence data and Santoyo *et al* (2006) for high-performance liquid chromatography data. This will help us not only in the better proposal and use of the discrimination diagrams but also for numerous other applications such as in geological process identification and modelling of magma sources. Actual effects of these errors in linear discriminant analysis will be difficult to evaluate; however, reporting of these individual errors will help us to establish a more reliable database than has been possible at present. In any case, the individual errors can be taken into account (using error propagation theory; see Verma and Santoyo 1997; Bevington and Robinson 2003; Verma 2000b, 2005; García-Valladares *et al* 2006; Verma *et al* 2006) during the application stage of our discriminant function diagrams; this will be illustrated in a subsequent paper. The total propagated errors in the final data points in a given discriminant function diagram will depend in a complex manner on the individual errors of all 'ratioed' elements (e.g., errors of TiO_2 and SiO_2 for $\ln(\text{TiO}_2/\text{SiO}_2)_{\text{adj}}$) as well as the magnitude of the respective discriminant function coefficients (see equations (3) and (4) above and tables 5–7 for these coefficients for different diagrams and the error propagation theory).

A synthesis of mis-classified samples from both the training and testing sets is presented in table 8.

Table 8. *Synthesis of mis-classified samples from training and testing sets.*

Using figure #	Training set						Testing set				
	Group	IAB	CRB	OIB	MORB	Total	IAB	CRB	OIB	MORB	Total
5	IAB	–	24	1	10	35	–	6	0	0	6
	CRB	19	–	107	22	148	1	–	15	0	16
	OIB	2	58	–	50	110	0	16	–	13	29
	MORB	7	10	26	–	43	0	1	2	–	3
6A	IAB	–	25	7	n.a.	32	–	6	0	n.a.	6
	CRB	20	–	114	n.a.	134	1	–	16	n.a.	17
	OIB	11	60	–	n.a.	71	3	14	–	n.a.	17
6B	IAB	–	21	n.a.	11	32	–	6	n.a.	0	6
	CRB	21	–	n.a.	37	58	1	–	n.a.	2	3
	MORB	8	12	n.a.	–	20	0	1	n.a.	–	1
6C	IAB	–	n.a.	6	10	16	–	n.a.	0	1	1
	OIB	6	n.a.	–	54	60	1	n.a.	–	15	16
	MORB	7	n.a.	20	–	27	0	n.a.	0	–	0
6D	CRB	n.a.	–	100	25	125	n.a.	–	16	1	17
	OIB	n.a.	58	–	51	109	n.a.	15	–	13	28
	MORB	n.a.	14	19	–	33	n.a.	0	1	–	1

Total number of samples in the training set: IAB (363 samples), CRB (671 samples), OIB (472 samples), and MORB (826 samples); and in the testing set: IAB (100 samples), CRB (100 samples), OIB (100 samples), and MORB (100 samples). n.a. not applicable for this diagram; – not applicable for this setting (i.e., the samples in this place are, in fact, correctly classified).

In fact, the mis-classification represents the complementary part of the % success (% correct classification) listed in table 5. For example, the 35 mis-classified samples from the IAB training set (table 8) in the four-group discriminant function diagram represent about 9.6% of all samples used in constructing it with the consequent % success of 90.4% (table 5). We will provide a detailed analysis of the mis-classified samples only for the four-group diagram (figure 5) because similar reasoning is valid for the three-group diagrams (figure 6a–d).

The mis-classified rocks from the IAB setting (a total of 41 samples; table 8) plot mainly in the field of CRB, viz., 30 samples (24 from the training and 6 from the testing set), followed by 10 samples from the training set mis-classified as MORB. Of these, most of the samples (a total of 20) mis-classified as CRB are from the Ueno basalt province in Japan, for which the original authors (Kimura *et al* 2002) have stressed the chemical diversity and a complex origin of these rocks. This area is located close to the intersection of three plates – North American plate, Eurasian plate, and Phillipine Sea plate, and is confined within four active faults. The depth of subducting slab surface below the Ueno basalt province varies between 200 and 300 km (and not the 100 to 200 km for a typical arc front). For these reasons, the Ueno basalt province area probably does not represent a typical IAB setting (at most a back-arc or a complex setting), with the consequent mis-classification of

a large number of IAB samples from our database. Concerning the mis-classified IAB samples as MORB, 5 out of 10 such samples are from the Tonga-Kermadec arc, from which a total of 25 samples were compiled in our database, and therefore, these mis-classified samples represent only a relatively small proportion (20%) of samples from this arc.

A large number of CRB samples were mis-classified as OIB (107 from the training set and 15 from the testing set; table 8). This is probably mainly due to the similarities of mantle sources beneath these two distinct tectonic settings. Numerous samples from CRB setting in Africa (51 samples from Central Afar and Ethiopia rifts, 28 from East Africa rift, 4 from Kenya rift, and 4 from Gregory rift) are mis-classified as OIB. Relatively few (20) CRB samples were mis-classified as IAB; most of them come from the western U.S.A. (e.g., 6 from the Basin and Range, 3 from the Colorado Plateau, and 2 from the Rio Grande rift). In fact, all 14 samples compiled in our database as from the Central Afar region of the Ethiopia rift are mis-classified: 9 as OIB and 5 as MORB. For the Ethiopia rift, the mis-classification represents a large percentage (~60%) of the compiled samples. For other CRB areas from Africa such as the Kenya and Gregory rifts, the mis-classified samples represent a similarly large proportion of the compiled samples. This suggests that beneath Africa the magma sources and processes are similar, at least in terms of major-elements,

to those for the ocean-island than for the continental rift setting. For other CRB areas, however, the mis-classification is much less significant; for example, for the Massif Central it is about 20%, and for China and the western USA, it is even less important.

The similarities of mantle sources for OIB and CRB may also account for a large number (74) of OIB samples (58 from the training and 16 from the testing set; table 8) mis-classified as CRB. These are mainly from French Polynesia (26 samples), Hawaiian Islands (22 samples), Socorro Island (7 samples), and Austral Chain (7 samples). Samples from the OIB setting mis-classified as MORB mainly come from Iceland (38 samples), Hawaiian Islands (11 samples), Galápagos Islands (6 samples), and St. Paul Island (5 samples). However, for French Polynesia, Hawaiian Islands, and Austral Chain, the mis-classified samples represent only a relatively small percentage ($\sim 15\text{--}20\%$), whereas for Iceland, Socorro, St. Paul, and Galápagos, a very large percentage of samples are mis-classified, being 73%, 50%, 45%, and 40% respectively. The proximity of these islands to an active spreading center (mid-ocean ridge system) may probably explain the higher rate of mis-classification of samples from these OIB areas (for Iceland, Socorro, and Galápagos, see figure 3; for St. Paul, figure 2).

Finally, MORB samples are mis-classified (table 8) mainly as OIB (28 samples) and CRB (11 samples), but represent a very small percentage of the total number of samples (926 samples; table 2) compiled as training and testing sets. Most of these mis-classified samples (28 as OIB and 9 as CRB) come from the North Chile ridge and are MORB samples with very unusual, HFSE-depleted chemistry as documented by the original authors in their paper (Bach *et al* 1996).

5. Application of new discriminant function diagrams

We present a series of case histories or applications, including an example, with an excel template, of these new diagrams for inferring the tectonic setting of tectonically complex areas of Mexico and of older rocks from India. The locations of the application areas are listed in table 9, and also included in figures 1, 3, and 4. Note that none of the data used here as examples constituted the database for constructing or testing of these diagrams, as confirmed by the respective sample locations (see 'Application' locations in figures 1, 2 and 4).

5.1 Excel template using a specific example of southern Mexico

First of all, we will present an excel template highlighting its use with the major-element data for only a few samples from southern Mexico (Verma 2002; these data are available as table DR1 'new data' from the GSA 'data repository' item 2002129; www.geosociety.org/pubs/ft2002.htm). This template will be available from the internet address of the 'Journal of Earth System Science', or directly on request from the first author (SPV) of this paper. The calculations are purposely presented in several steps to make the reader familiar with the type of numbers to be encountered at different stages of calculations because he/she is generally accustomed to looking at the actual concentrations or at best some ratios.

First, the SINCLAS computer program (Verma *et al* 2002; the computer code can be downloaded from <http://www.iamg.org/CGEditor/index.htm>; note the internet address is corrected here – it was wrongly printed by the journal; or can be obtained from the first author) is used to obtain the Fe_2O_3 and FeO calculations under the Middlemost option and 100% adjustment on an anhydrous basis, as required for the correct use of our diagrams.

The Excel file 'SINCLAS_Verma2002InitialData' in the 'Excel Template' folder presents the manner the actual data should be input using the above-mentioned data for 14 samples as example. This file is then processed using the SINCLAS computer program (Verma *et al* 2002), declaring the file 'SINCLAS_Verma2002ProcessedData' in the 'Excel Template' folder as the output file. Note the 'MIDDLEMO' entry in the 'FE_PROC' column of this file is automatically written by the SINCLAS program when the 'Middlemost' option is chosen. This procedure can be easily repeated for processing other 'unknown' samples.

Then, we present the Excel file 'Discrim_Diagrams_template_March2006' in the same file folder as the main Excel template.

The processed data for the samples under study (from the column SIO2ADJ to the column P2O5ADJ, along with the sample names) are manually transferred from the 'SINCLAS_Verma2002ProcessedData' file on the first part of the 'DataCalc' sheet of the 'Discrim_Diagrams_template March 2006' file, as has been done here for the 14 samples from this example (see table 9 for sample locations). The layout of this sheet is such that any number of samples can be easily processed and pasted. Note once again the adj subscript to remind the reader that the prior-processing of major-element data by SINCLAS is a required step towards the correct use of our diagrams. The remaining part of

Table 9. *Sample locations for the application examples.*

Site #	Figure #	Longitude (°)	Latitude (°)	Country/Province	No. of samples	Reference
Southern Mexico data used for constructing the Excel template						
357	3	259.52	20.45	Mexican Volcanic Belt (central part)	3	Verma (2002)
358	3	260.84	20.49	Mexican Volcanic Belt (central part, Hidalgo state)	4	Verma (2002)
359	3	261.935	19.473	Mexican Volcanic Belt (Volcán La Malinche area)	1*	Verma (2002)
360	3	262.538	19.272	Mexican Volcanic Belt (Las Derrumbadas area)	3*	Verma (2002)
361	3	264.818	18.522	Los Tuxtlas volcanic field	2**	Verma (2002)
362	3	266.767	17.350	El Chichón volcano	1	Verma (2002)
Eastern part of the Mexican Volcanic Belt						
363	3	261.869	19.804	Mexican Volcanic Belt (Acoculco caldera)	2	Verma (2001)
359	3	261.935	19.473	Mexican Volcanic Belt (Volcán La Malinche area)	1*	Verma (2002)
364	3	262.479	19.708	Mexican Volcanic Belt (Los Humeros caldera)	5	Ferriz and Mahood (1987)
365	3	262.535	19.646	Mexican Volcanic Belt (Los Humeros caldera)	4	Verma (2000b)
360	3	262.538	19.272	Mexican Volcanic Belt (Las Derrumbadas area)	3*	Verma (2002)
366	3	262.7	19.5	Mexican Volcanic Belt (eastern part)	8	Demant (1981)
367	3	263.03	19.61	Mexican Volcanic Belt (eastern part)	17	Siebert and Carrasco-Núñez (2002)
368	3	263.21	19.68	Mexican Volcanic Belt (eastern part)	12	Gómez-Tuena <i>et al</i> (2003)
369	3	263.28	19.61	Mexican Volcanic Belt (eastern part, including the easternmost Palma Sola area)	62	Negendank <i>et al</i> (2002)
Los Tuxtlas Volcanic Field (Mexico)						
370	3	264.981	18.431	Los Tuxtlas volcanic field	3	Verma <i>et al</i> (1993)
371	3	264.9	18.5	Los Tuxtlas volcanic field	23	Nelson <i>et al</i> (1995)
372	3	264.884	18.495	Los Tuxtlas volcanic field	14	Verma (2006)
361	3	264.818	18.522	Los Tuxtlas volcanic field	2**	Verma (2002)
Eastern Alkaline Province (Mexico)						
373	3	260.4	25.0	Sierra de Picachos (Mexico)	8	Morton-Bermea (1990)
374	3	261.3	24.2	Sierra San Carlos (Mexico)	19	Nick (1988)
375	3	261.3	24.2	Sierra San Carlos (Mexico)	4	Treviño-Cázares <i>et al</i> (2005)
376	3	261.4	23.0	Sierra de Tamaulipas (Mexico)	5	Orozco-Esquivel (1995)
377	3	261.4	23.0	Sierra de Tamaulipas (Mexico)	41	Ramirez-Fernández (1996)
378	3	261.4	23.0	Sierra de Tamaulipas (Mexico)	2	Robin and Tournon (1978)
379	3	262.0	20.0	Pachuca (Mexico)	7	Orozco-Esquivel (1995)
380	3	262.0	22.0	Tampico Plain (Mexico)	4	Robin and Tournon (1978)
381	3	262.5	20.5	Poza Rica (Mexico)	5	Orozco-Esquivel (1995)
Continental Arc (Andes)						
382	4	288.3	-37.3	Antuco (Chile)	1	Deruelle (1982)
383	4	287.2	-40.9	Osorno (Chile)	1	Deruelle (1982)
384	4	287.1	-41.3	Calbuco (Chile)	1	Deruelle (1982)
385	4	289.7	-44.9	El Pedrero (Argentina)	1	Deruelle (1982)
386	4	289.5	-36.1	Laguna de Maule volcano (Chile)	1	Frey <i>et al</i> (1984)
387	4	287.8	-40.5	Puyehue-Cordon Caulle (Chile)	7	Gerlach <i>et al</i> (1988)

Table 9. (Continued).

Site #	Figure #	Longitude (°)	Latitude (°)	Country/Province	No. of samples	Reference
388	4	288.0	-39.3	Pichares (Chile)	1	Hickey-Vargas <i>et al</i> (1989)
389	4	288.0	-39.3	Caburga (Chile)	2	Hickey-Vargas <i>et al</i> (1989)
390	4	288.0	-39.3	Cerro Redondo (Chile)	1	Hickey-Vargas <i>et al</i> (1989)
391	4	288.0	-39.3	Lanin volcano (Chile)	2	Hickey-Vargas <i>et al</i> (1989)
392	4	287.7	-40.6	Puyehue (Chile)	6	Hickey <i>et al</i> (1986)
393	4	288.3	-38.7	Llaima (Chile)	1	Hickey <i>et al</i> (1986)
394	4	288.3	-39.5	Quetrupillan (Chile)	1	Hickey <i>et al</i> (1986)
395	4	287.7	-40.7	Antillanca (Chile)	3	Hickey <i>et al</i> (1986)
396	4	289.0	-41.8	Yate (Chile)	1	López-Escobar <i>et al</i> (1993)
397	4	289.0	-41.9	Hualaihue (Chile)	1	López-Escobar <i>et al</i> (1993)
398	4	289.0	-43.2	Corcovado (Chile)	1	López-Escobar <i>et al</i> (1993)
399	4	289.0	-45.1	Cay (Chile)	5	López-Escobar <i>et al</i> (1993)
400	4	289.0	-45.1	Maca (Chile)	1	López-Escobar <i>et al</i> (1993)
401	4	289.0	-46.0	Hudson (Chile)	1	López-Escobar <i>et al</i> (1993)
402	4	287.7	-40.6	Puyehue (Chile)	2	Tormey <i>et al</i> (1991)
Continental Arc (Guatemala, El Salvador, Nicaragua, Honduras, and NW Costa Rica)						
403	3	269.4	14.38	Pacaya (Guatemala)	2	Carr's website***
404	3	269.5	14.3	Pacaya (Guatemala)	1	Carr (1984)
405	3	269.5	14.3	Pacaya (Guatemala)	3	Bardintzeff and Deniel (1992)
406	3	269.5	14.3	Cuilapa (Guatemala)	1	Carr <i>et al</i> (1990)
407	3	269.5	14.3	Pagaya (Guatemala)	1	Carr <i>et al</i> (1990)
408	3	269.50	14.3	Cuilapa (Guatemala)	3	Carr's website***
409	3	270.20	13.84	Apaneca (El Salvador)	2	Carr's website***
410	3	270.37	13.82	Izalco (El Salvador)	1	Carr's website***
411	3	270.37	13.83	Cerro Verde (El Salvador)	1	Carr's website***
412	3	271.23	13.72	Apastape (El Salvador)	1	Carr's website***
413	3	271.50	13.5	Tecapa (El Salvador)	1	Carr's website***
414	3	271.53	13.42	Usulután (El Salvador)	1	Carr's website***
415	3	271.73	13.43	San Miguel (El Salvador)	3	Carr's website***
416	3	272.15	13.28	Conchagua (El Salvador)	3	Carr's website***
417	3	273.0	12.6	San Cristóbal (Nicaragua)	9	Hazlett (1987)
418	3	273.0	12.7	San Cristóbal (Nicaragua)	13	Carr's website***
419	3	273.15	12.6	Telica (Nicaragua)	16	Carr's website***
420	3	273.25	12.55	Rota (Nicaragua)	2	Carr's website***
421	3	273.30	12.50	Cerro Negro (Nicaragua)	21	Carr's website***
422	3	273.32	12.50	Las Pilas (Nicaragua)	2	Carr's website***
423	3	273.47	12.42	Momotombo (Nicaragua)	1	Carr's website***
424	3	273.68	12.11	Nejapa (Nicaragua)	15	Carr's website***
425	3	273.8	12.0	Nejapa-Granada (Nicaragua)	13	Walker <i>et al</i> (1990)
426	3	273.8	12.0	Granada (Nicaragua)	2	Walker <i>et al</i> (2001)
427	3	273.8	12.0	Apoyo (Nicaragua)	1	Walker <i>et al</i> (2001)
428	3	273.8	12.0	Nejapa (Nicaragua)	5	Walker <i>et al</i> (2001)
429	3	273.3	12.4	Cerro Negro (Nicaragua)	1	Walker <i>et al</i> (2001)
430	3	273.85	11.98	Masaya (Nicaragua)	20	Carr's website***
431	3	273.8	12.0	Masaya (Nicaragua)	1	Carr (1984)
432	3	273.95	11.93	Apoyo (Nicaragua)	2	Carr's website***
433	3	274.00	11.88	Granada (Nicaragua)	4	Carr's website***
434	3	274.02	11.83	Mombacho (Nicaragua)	1	Carr's website***

Table 9. (Continued).

Site #	Figure #	Longitude (°)	Latitude (°)	Country/Province	No. of samples	Reference
435	3	274.53	10.98	Orosi (Costa Rica)	1	Carr's website***
436	3	274.67	10.83	Rincón (Costa Rica)	2	Carr's website***
437	3	272.02	14.98	Yohoa (Honduras)	10	Carr's website***
438	3	272.40	13.30	Zacate Grande (Honduras)	2	Carr's website***
Deccan Traps (India)						
439	1	70.4	22.0	Kathiawar (India)	12	Melluso <i>et al</i> (1995)
440	1	73.0	19.0	Deccan Traps (India)	3	Peng <i>et al</i> (1994)
441	1	73.0	21.7	Rajpipla (India)	6	Melluso <i>et al</i> (1995)
442	1	73.1	19.3	Deccan Traps (India)	1	Melluso <i>et al</i> (2004)
443	1	73.6	19.6	Deccan Traps (India)	1	Melluso <i>et al</i> (2004)
444	1	73.6	20.7	Deccan Traps (India)	1	Melluso <i>et al</i> (2004)
445	1	73.7	20.0	Deccan western (India)	5	Duraiswami <i>et al</i> (2004)
446	1	73.7	20.7	Deccan Traps (India)	1	Melluso <i>et al</i> (2004)
447	1	73.7	22.7	Pavagadh (India)	4	Melluso <i>et al</i> (1995)
448	1	73.7	20.6	Deccan Traps (India)	1	Melluso <i>et al</i> (2004)
449	1	73.7	19.8	Deccan Traps (India)	1	Melluso <i>et al</i> (2004)
450	1	73.9	20.5	Deccan Traps (India)	1	Melluso <i>et al</i> (2004)
451	1	73.9	20.1	Deccan Traps (India)	1	Melluso <i>et al</i> (2004)
452	1	73.9	20.3	Deccan Traps (India)	1	Melluso <i>et al</i> (2004)
453	1	74.0	20.3	Deccan Traps (India)	1	Melluso <i>et al</i> (2004)
454	1	74.1	19.6	Deccan western (India)	26	Bondre <i>et al</i> (2006)
455	1	74.7	20.5	Deccan Traps (India)	1	Melluso <i>et al</i> (2004)
456	1	74.9	19.5	Deccan Traps (India)	1	Melluso <i>et al</i> (2004)
457	1	74.9	20.1	Deccan Traps (India)	4	Melluso <i>et al</i> (2004)
458	1	74.9	19.4	Deccan Traps (India)	1	Melluso <i>et al</i> (2004)
459	1	75.0	20.5	Deccan Traps (India)	4	Melluso <i>et al</i> (2004)
460	1	75.0	19.3	Deccan Traps (India)	1	Melluso <i>et al</i> (2004)
461	1	75.1	19.9	Deccan Traps (India)	4	Melluso <i>et al</i> (2004)
462	1	75.1	21.6	Bijasan Ghat (India)	33	Sheth <i>et al</i> (2004)
463	1	75.2	19.7	Deccan Traps (India)	2	Melluso <i>et al</i> (2004)
464	1	75.3	19.8	Deccan Traps (India)	1	Melluso (2004)
465	1	75.4	20.9	Deccan Traps (India)	1	Melluso <i>et al</i> (2004)
466	1	75.5	19.7	Deccan Traps (India)	2	Melluso <i>et al</i> (2004)
467	1	75.6	20.1	Deccan Traps (India)	1	Melluso <i>et al</i> (2004)
468	1	75.8	19.5	Deccan Traps (India)	2	Melluso <i>et al</i> (2004)
Malani igneous suite (India)						
469	1	72.4	17.5	Malani, Diri-Gurprat (India)	1	Maheshwari <i>et al</i> (1996), cited in table 6B of Sharma (2004)
470	1	72.4	17.5	Malani suite, Kundal (India)	8	Singh and Vallinayagam (2004)
471	1	72.18	24.82	Malani, Golwara (India)	2	Bhushan and Chandrasekaran (2002)
472	1	72.71	25.20	Malani, Bagra (India)	1	Bhushan and Chandrasekaran (2002)
473	1	71.87	26.23	Malani, Ramdevjee (India)	1	Bhushan and Chandrasekaran (2002)
474	1	72.13	25.78	Malani, Simaliya (India)	3	Bhushan and Chandrasekaran (2002)

Table 9. (Continued).

Site #	Figure #	Longitude (°)	Latitude (°)	Country/Province	No. of samples	Reference
475	1	72.08	24.88	Malani, Karara (India)	1	Bhushan and Chandrasekaran (2002)
476	1	71.23	25.72	Malani, Jasai (India)	1	Bhushan and Chandrasekaran (2002)
477	1	72.35	25.64	Malani, Siwana (India)	1	Bhushan and Chandrasekaran (2002)
Bastar craton dykes (India)						
478	1	81.5	19.0	Bastar craton (India) Bastanar	6	Srivastava <i>et al</i> (1996)
479	1	81.3	18.9	Bastar craton (India) Dantewara	2	Srivastava <i>et al</i> (1996)
480	1	81.6	18.8	Bastar craton (India) Katekalyan	1	Srivastava <i>et al</i> (1996)
481	1	81.72	18.85	Southern Bastar craton (India)	2	Srivastava and Singh (2004)
482	1	81.72	18.98	Southern Bastar craton (India)	1	Srivastava and Singh (2004)
483	1	81.71	18.85	Southern Bastar craton (India)	2	Srivastava and Singh (2004)
484	1	81.70	18.98	Southern Bastar craton (India)	1	Srivastava and Singh (2004)
485	1	81.69	18.87	Southern Bastar craton (India)	1	Srivastava and Singh (2004)
486	1	81.69	18.98	Southern Bastar craton (India)	1	Srivastava and Singh (2004)
487	1	81.69	18.86	Southern Bastar craton (India)	1	Srivastava and Singh (2004)
488	1	81.68	18.98	Southern Bastar craton (India)	1	Srivastava and Singh (2004)
489	1	81.67	18.99	Southern Bastar craton (India)	1	Srivastava and Singh (2004)
490	1	81.63	18.98	Southern Bastar craton (India)	1	Srivastava and Singh (2004)
491	1	81.63	18.85	Southern Bastar craton (India)	1	Srivastava and Singh (2004)
492	1	81.60	18.95	Southern Bastar craton (India)	1	Srivastava and Singh (2004)
493	1	81.59	18.95	Southern Bastar craton (India)	1	Srivastava and Singh (2004)
494	1	81.57	18.96	Southern Bastar craton (India)	1	Srivastava and Singh (2004)
495	1	81.56	18.97	Southern Bastar craton (India)	2	Srivastava and Singh (2004)
496	1	81.55	18.98	Southern Bastar craton (India)	1	Srivastava and Singh (2004)
497	1	81.54	18.97	Southern Bastar craton (India)	2	Srivastava and Singh (2004)
498	1	81.53	18.98	Southern Bastar craton (India)	1	Srivastava and Singh (2004)
499	1	81.53	18.97	Southern Bastar craton (India)	3	Srivastava and Singh (2004)
500	1	81.52	18.98	Southern Bastar craton (India)	3	Srivastava and Singh (2004)
501	1	81.52	18.99	Southern Bastar craton (India)	1	Srivastava and Singh (2004)
502	1	81.52	18.97	Southern Bastar craton (India)	3	Srivastava and Singh (2004)
503	1	81.52	18.91	Southern Bastar craton (India)	1	Srivastava and Singh (2004)
504	1	81.51	18.98	Southern Bastar craton (India)	2	Srivastava and Singh (2004)
505	1	81.51	18.99	Southern Bastar craton (India)	1	Srivastava and Singh (2004)
506	1	81.51	18.91	Southern Bastar craton (India)	1	Srivastava and Singh (2004)
507	1	81.50	18.98	Southern Bastar craton (India)	2	Srivastava and Singh (2004)
508	1	81.49	18.98	Southern Bastar craton (India)	2	Srivastava and Singh (2004)
509	1	81.48	18.97	Southern Bastar craton (India)	1	Srivastava and Singh (2004)
510	1	81.47	18.98	Southern Bastar craton (India)	1	Srivastava and Singh (2004)
511	1	81.46	18.98	Southern Bastar craton (India)	1	Srivastava and Singh (2004)
512	1	81.46	18.90	Southern Bastar craton (India)	1	Srivastava and Singh (2004)
513	1	81.46	18.91	Southern Bastar craton (India)	1	Srivastava and Singh (2004)
514	1	81.43	18.92	Southern Bastar craton (India)	1	Srivastava and Singh (2004)
515	1	81.40	18.94	Southern Bastar craton (India)	1	Srivastava and Singh (2004)
516	1	81.40	18.93	Southern Bastar craton (India)	1	Srivastava and Singh (2004)
517	1	81.39	18.93	Southern Bastar craton (India)	1	Srivastava and Singh (2004)
518	1	81.38	18.94	Southern Bastar craton (India)	2	Srivastava and Singh (2004)

*Also used in evaluating the eastern part of the MVB (E-MVB); **also used in evaluating the Los Tuxtlas volcanic field; ***M J Carr's website (<http://www.rci.rutgers.edu/~carr>; June 2004).

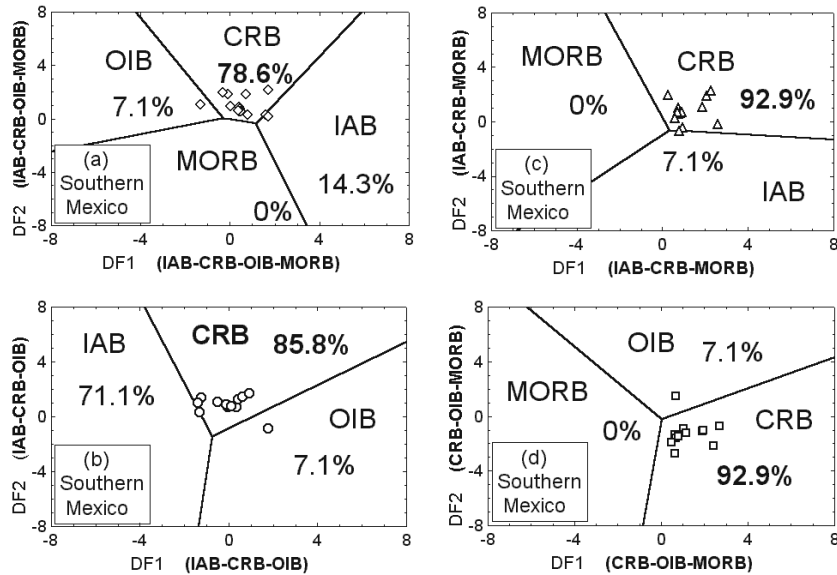


Figure 7. Four (of the five) pertinent discriminant function diagrams for southern Mexico partial data (for 14 samples of basic and ultrabasic rocks tabulated as 'new data' by Verma 2002). Note most samples fall in the CRB field; the corresponding percentages in each diagram and for each tectonic setting are the % success of the classification for the samples under evaluation (e.g., CRB 78.6% for the first diagram). See the Excel template example and the text for more details on the use of these diagrams; also see the Excel template for more details on the data processing. (a) Four-groups IAB, CRB, OIB, and MORB (1-2-3-4); (b) Three-groups IAB, CRB, and OIB (1-2-3); (c) Three-groups IAB, CRB, and MORB (1-2-4); and (d) Three-groups CRB, OIB, and MORB (2-3-4).

the Excel sheet is to calculate ratios of major element concentrations to SiO_2 concentration, and then to carry out the \log_e -transformation of the ratio data. Thus, in this first sheet, the basic calculations are performed, whereas the remaining sheets present the respective diagrams. Finally, the two discriminant functions DF1 and DF2 for a given diagram (for four-groups named as figure E5 and for three-groups at a time named as figure E6a, E6b, E6c, and E6d) are calculated using the appropriate factors listed in tables 6 and 7. The corresponding DF1 and DF2 data are then manually transferred ('copy and paste') to the other Excel sheets and the new diagrams prepared (by 'dragging' the data into the respective figure) and adopted for specific applications and interpretations.

The four diagrams applicable for the southern Mexico data are presented in figure 7(a-d). The selected diagrams should include the inferred setting, while the diagram which does not have this indicated setting is not considered any further. In the case of southern Mexico, the indicated setting is CRB (see most samples fall in the CRB field in all four diagrams in figure 7a-d). Therefore, the remaining diagram (in this case, the figure with IAB-OIB-MORB settings; see figure 6c) from the set of five proposed diagrams (figures 5 and 6a-d) is eliminated from the discussion. The % success rates for the CRB field in all diagrams are very high varying from 78.6 to 92.9%; these success

rates are similar to those obtained from the training and testing sets (see table 5). This strongly suggests that the inferred tectonic setting for the basic volcanism in southern Mexico is a continental rift (CRB), and not an arc (IAB) or ocean-island (OIB). Note also that we have used a relatively small number of samples to illustrate the use of our diagrams. We present three more case histories of complex areas of Mexico (the Mexican Volcanic Belt, the Los Tuxtlas volcanic field, and the Eastern Alkaline Province) to confirm these results, using a much larger and more representative database.

5.2 Mexican Volcanic Belt (MVB) as a province of a complex or controversial tectonic setting

This Miocene to Recent volcanic province in Mexico has had a highly controversial nature for its tectonic setting (see for example, Sheth *et al* 2000, 2002; Verma 2002, 2004; and references therein). The suggested tectonic setting for the MVB has varied from the conventional arc (continental arc) to OIB and CRB settings, in spite of the ongoing subduction. The Excel template example presented above clearly points to a CRB setting not only for the MVB but also for the whole of southern Mexico; this interpretation is fully consistent with Verma (2002) who used several other lines of evidence and an extensive database from Mexico

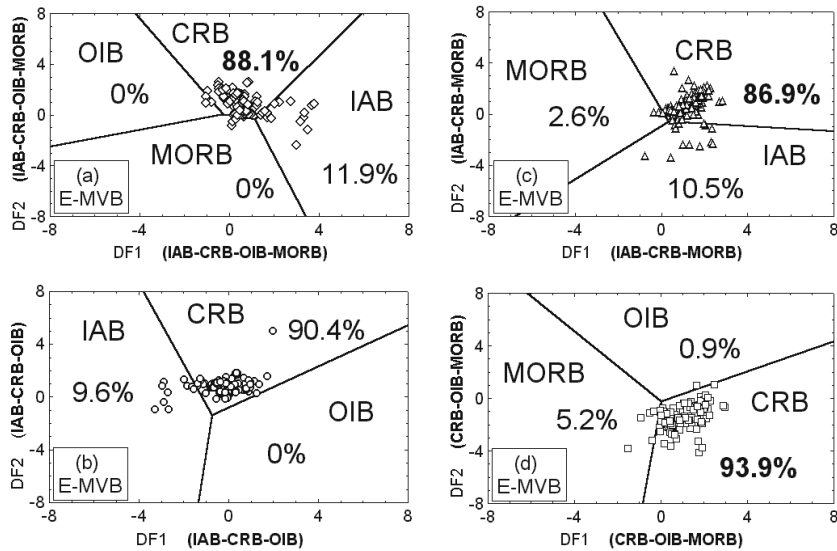


Figure 8. Four pertinent diagrams for 114 samples of basic and ultrabasic rocks from the eastern part of the Mexican Volcanic Belt. Note most samples fall in the CRB field (the corresponding % success rates for this tectonic setting – 86.9 to 93.9% – are extremely high). The figure parts (a) to (d) are the same as in figure 7.

and Central America, to conclude a rift setting for all of southern Mexico.

To further illustrate the usefulness of our new diagrams we plot the data compiled by Verma (2004) for the eastern part of the MVB (E-MVB) in our new diagrams (see table 9 for sample locations). We restrict our present application to this part of the MVB mainly for the following reasons:

- this is the region where the subduction-relationship (arc setting) of the MVB was seriously questioned for the first time more than 20 years ago (Verma 1983);
- this region shows an overlap with the Eastern Alkaline Province (EAP) of Mexico (e.g., Verma 2006);
- a ‘back-arc setting’ has been implicitly proposed as an explanation for the unusual chemistry of lavas from this area (see ‘behind-the-arc’ in the title of the paper by Siebert and Carrasco-Núñez 2002) – a nomenclature already questioned by Verma (2004, 2006), because the assignment of such a tectonic setting requires the presence of an ‘arc’ somewhere between this area and the respective trench, which unfortunately does not exist in southern Mexico; and
- a restricted area will help us to limit the number of samples to be evaluated for a better visual examination of the discrimination diagrams (114 samples used; table 9; figure 8a–d).

The basic and ultrabasic rock data from the E-MVB plotted in our discriminant function diagrams undoubtedly show that they represent a CRB setting; the % success rates vary from 86.9 to

93.9% – extremely high percentages for application in an ‘unknown’ or a complex setting.

5.3 Other Mexican provinces

5.3.1 Los Tuxtlas volcanic field (LTVF)

The tectonic setting of this Miocene to Recent volcanic province has also been controversial because different settings have been proposed for the LTVF: a typical arc setting (Thorpe 1977); an extensional setting (Robin 1976, 1982; Robin and Tournon 1978); and a ‘hybrid’ ‘arc and back-arc’ setting, both arc and back-arc being located at the same place (Nelson *et al* 1995). From a detailed geochemical study, recently Verma (2006) reached the conclusion that the LTVF represents an essentially extensional setting. In this context, it would be interesting to find out the indications of our new discriminant function diagrams.

We plotted the data for 42 samples of basic and ultrabasic rocks from the LTVF in figure 9(a–d), which clearly shows that the LTVF represents a continental rift setting – the % success varies from 83.3 to 97.6%. Further, although the LTVF is an isolated area, these results and other lines of evidence also suggest that the LTVF belongs to the EAP (see more details in Verma 2006).

5.3.2 Eastern Alkaline Province (EAP)

This volcanic province (EAP) in north–east Mexico has been conventionally attributed to extensional tectonics along the Gulf of Mexico coast, i.e. there has been less controversy, until recently, regarding

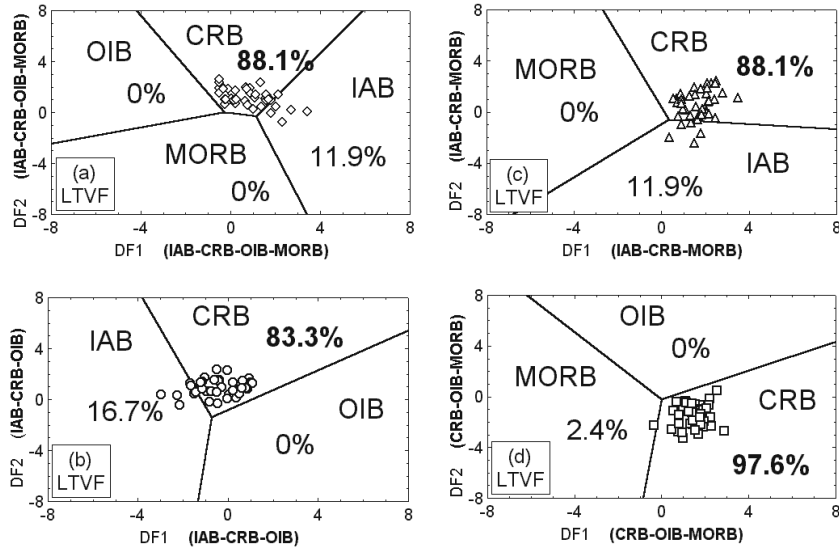


Figure 9. Four pertinent diagrams for 42 samples of basic and ultrabasic rocks from the Los Tuxtlas volcanic field (LTVF). Note most samples fall in the CRB field (as in figure 8, the corresponding % success rates for this tectonic setting – 83.3 to 97.6% – are also extremely high). The figure parts (a) to (d) are the same as in figure 7.

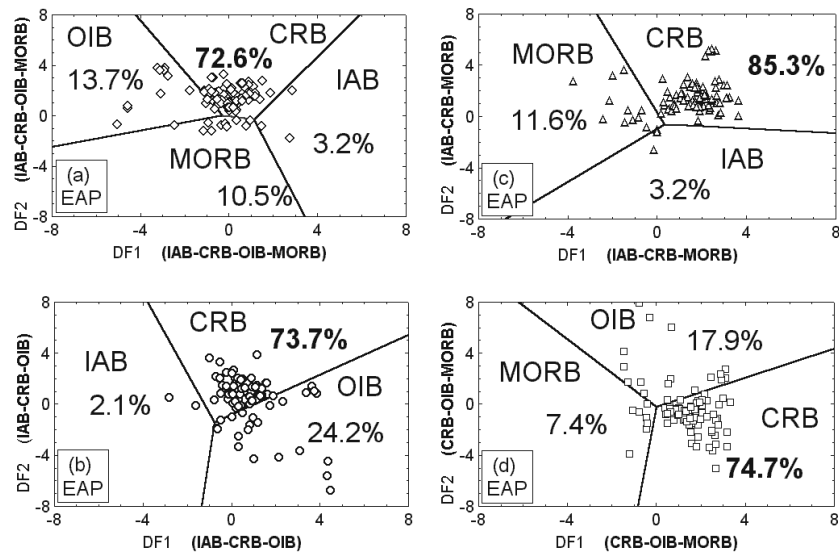


Figure 10. Four pertinent diagrams for 95 samples of basic and ultrabasic rocks from the Eastern Alkaline Province (EAP). Note most samples fall in the CRB field (the corresponding % success rates for this tectonic setting – 72.6 to 85.3% – are high). The figure parts (a) to (d) are the same as in figure 7.

its tectonic setting as the CRB setting than the other Mexican areas discussed in this paper (the MVB and the LTVF). The actual extensional faults were recognized by Robin (1982), as of Oligocene to Present and parallel to the Gulf of Mexico, but recently Ferrari *et al* (2005) attributed, instead, a major role to the older late Jurassic ‘hidden’ fault structures in this area. Ferrari *et al* (2005), in addition, suggested a relationship of the EAP with the current subduction along the Pacific coast and denied its rift-related origin.

We used a recent compilation by Verma (2006) to apply our new discriminant function diagrams for inferring the tectonic setting for this province, also now characterized with a controversial tectonic setting as the other two Mexican areas (see 5.2 and 5.3.1 above). We plotted the data for basic and ultrabasic rocks (95 samples) from the EAP in figure 10(a–d). This figure clearly shows that the EAP represents a continental rift setting – the % success varies from 72.6 to 85.3%. These results, certainly, do not support the contention of

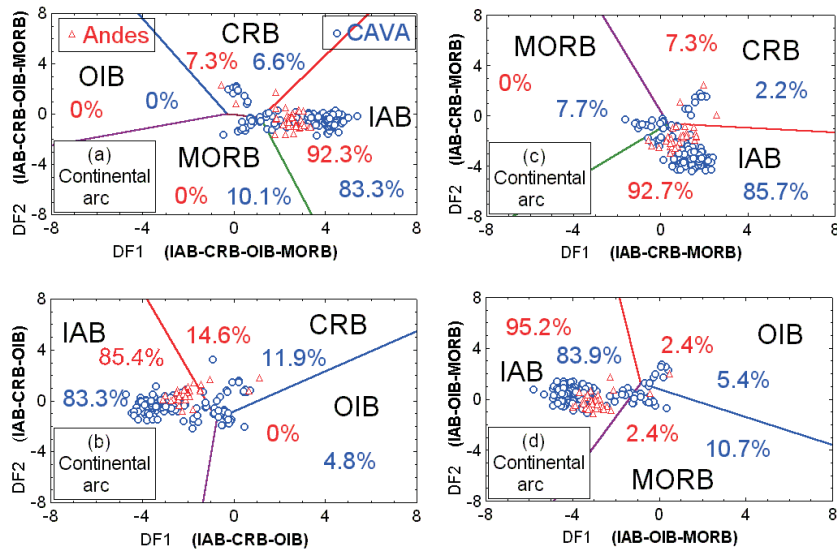


Figure 11. Four pertinent diagrams for 209 samples of basic rocks from two arcs (41 from the Los Andes continental arc – Andes, and 168 from the Central American Volcanic Arc – CAVA). Note most samples fall in the IAB field; the corresponding % success rates for the Andes samples – 85.4 to 95.2% (see numbers in blue) – are extremely high, whereas for the CAVA they are high (83.3 to 85.9%; see numbers in green). The figure parts (a) to (c) are the same as in figure 7, but (d) is the three-groups IAB, OIB, and MORB (1–3–4).

Ferrari *et al* (2005) that the EAP does not have a rift-related origin, and instead support the recent work by Verma (2006) who also used numerous other tectonomagmatic discrimination diagrams as well as other evidence to show its rift-related origin.

5.4 Continental arc setting

We compiled basic rock samples (practically no ultrabasic rocks are reported from these areas) from two continental arcs (continental arc basic rocks – CAB setting) for testing if this missing CAB set (note our diagrams discriminate only the IAB, CRB, OIB, and MORB settings) preferably plots in the IAB setting. The Andean continental arc (Andes) is represented by 41 samples, whereas the Central American Volcanic Arc (CAVA) is depicted by 168 samples (figure 11a–d). Rocks from both arcs plot mainly (85.4 to 95.2% from the Andes and 83.3 to 85.9% from the CAVA) in the field of IAB, suggesting an IAB-type setting for these two provinces. Thus, basic rocks from the CAB and IAB settings have very similar major-element chemistry. To distinguish them (CAB and IAB), we probably would need to include trace elements in our discriminant analysis.

5.5 Deccan flood basalt province – an example that should probably await further research

This important volcanic province in India was represented in our application database by 124

samples of basic rocks from different locations (figure 1; table 9). These samples were plotted in our discriminant function diagrams (figure 12a–d). The complex nature of the Deccan is evident from the four-group diagram (figure 12a), in which the samples plot in all four fields. However, the other three-group diagrams (figure 12b–d) indicate the preference for the OIB setting in which about 68.6 to 79.8% samples plot. In any case, these % success rates for this setting (OIB) are relatively low.

There may be several explanations for these results. First, Agrawal *et al* (2004) pointed out the difficulties of discriminant function diagrams when more fields such as all four are considered at a time, the consideration of less fields, for example, three at a time probably provides more reliable results. The second, probably a more plausible reason may be that the Deccan traps are considered as ‘flood basalts’, which may represent a distinctly different tectonic setting than the four settings we have considered in our diagrams. Because samples from this type of areas (flood basalts) were not explicitly included in our initial database, our diagrams should not be used for a setting expected from field work to be different from the four settings actually considered (the IAB, CRB, OIB, and MORB settings). In fact, samples from a different tectonic setting will fall close to or inside the field, for which they have more chemical (in this case, major-element) similarity, which in the case of the Deccan, seems to be with the OIB setting. It appears, therefore, that *a priori* knowledge,

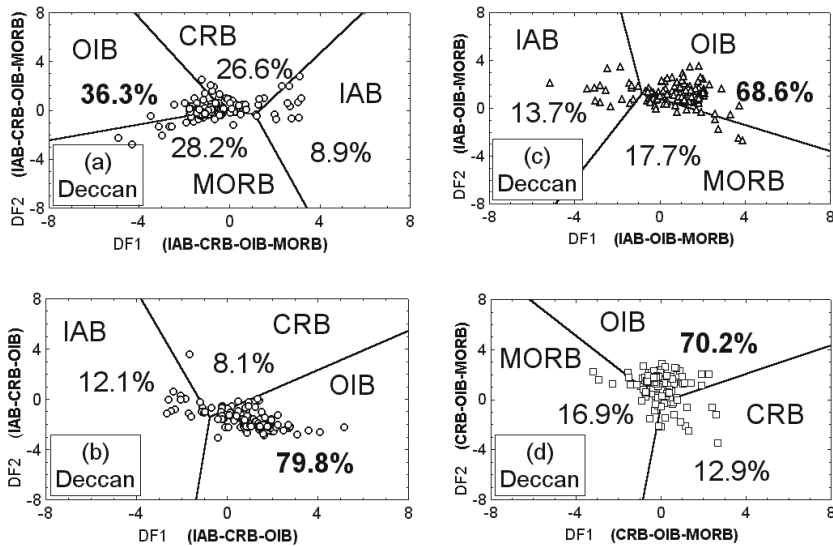


Figure 12. Four pertinent diagrams for 124 samples of basic and ultrabasic rocks from the Deccan flood basalt province, India. The figure parts (a), (b), and (d) are the same as in figure 7, but (c) is the three-group IAB, OIB, and MORB (1–3–4). See the text for the complexity of the interpretation.

probably from prior field work, that the samples actually belong to one of the tectonic settings of the diagram, is a necessary requirement in the use of these discriminant diagrams. Another reason for the lack of a more definite indication of the discriminant function diagrams for the Deccan case might be the highly complex and variable nature of the sources and processes operative in this vast province. To overcome this problem, in future we probably need to include more tectonic settings such as flood basalt or enriched-MORB in our database and then propose new discriminant function diagrams.

5.6 Cratons from India

Major-element data for basic rock samples from two cratonic areas (the Malani igneous complex from northwestern India and the Bastar mafic dykes from central India) were compiled in our database (table 9; figure 1). Some intermediate rocks with $(\text{SiO}_2)_{\text{adj}} < 53\%$ were also included to confirm our earlier indications that the inclusion of some, a few additional rocks of intermediate composition does not change the conclusions reached by the use of our discriminant function diagrams.

5.6.1 Malani igneous suite, northwestern India

Malani was mainly an acid volcanic/plutonic event (~ 750 Ma), with rhyolitic and granitic rocks distributed over an area of about $51,000 \text{ km}^2$, whose origin has been attributed to a hot spot (Kochhar

1984; Singh and Vallinayagam 2004) or to extensional tectonics and intraplate anorogenic setting (Sharma 2004). Based on tectonomagmatic diagrams for granites, all workers have called the Malani volcanics and granites as ‘A-type’ or ‘anorogenic’. Surprisingly, barring few flows and dolerite dykes, basalts and other basic rocks are rare; the basic and intermediate rocks together constitute less than 5% of the total area (Bhushan and Chandrasekaran 2002). To our knowledge, no one has yet used the chemical composition of basalts in Malani to infer tectonic setting.

First of all, for rock nomenclature we wish to point out the danger of not strictly following the recommendations of IUGS Subcommittee on the Systematics of Igneous Rocks. Unfortunately, this recommendation-violation is a generalized phenomenon. These problems seem to persist in numerous published papers, including those from Malani. For example, Sharma (2004) in his table 6A on Malani volcanics reported the first 5 samples as basalt, none of them proved to be a basic rock (basalt) when the SINCLAS computer program (Verma *et al* 2002) was used. Even the sample listed by him as basalt in his table 6B (data from Maheshwari *et al* 1996) did not result as a basalt. In fact, all basalt samples from Sharma (2004) are basaltic andesite rocks according to the IUGS recommendations and TAS classification scheme.

We, therefore, strongly recommend geologists to use the SINCLAS computer program for proper rock nomenclature and CIPW norm calculation, as has been already done by numerous workers (e.g., Carracedo *et al* 2003; Sheth *et al* 2003; Srivastava

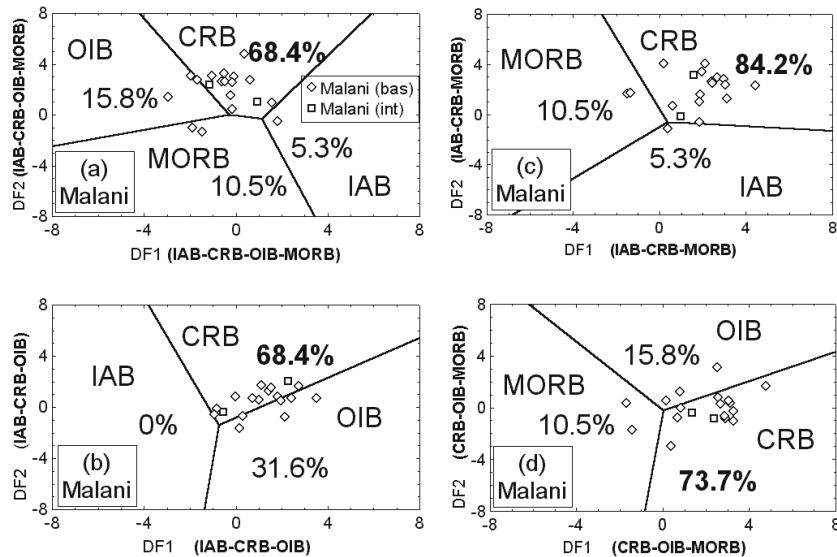


Figure 13. Four pertinent diagrams for samples of basic rocks from a cratonic area of India – the Malani igneous suite, northwestern Indian shield (2 samples of intermediate rocks with $(\text{SiO}_2)_{\text{adj}} < 53\%$ are also included). Note most samples for the Malani area fall in the CRB field; the corresponding % success rates (68.4 to 84.2%) are high. The figure parts (a) to (d) are the same as in figure 7.

et al 2004a, 2004b; Srivastava and Sinha 2004; Singh and Kumar 2005; Treviño-Cázares *et al* 2005; Rajani *et al* 2005). This recommendation is also valid for other workers such as: Sensarma *et al* (2004) on Bijli Rhyolite of central India; Alam *et al* (2004) on Barren Island lavas and dykes; and Duraiswami *et al* (2004) on Daund lava flow. We hope that, in future, these authors and others use SINCLAS for their work and especially if they employ our discriminant function diagrams for evaluating the tectonic setting of their study areas.

Unfortunately, high-quality major-element data for basic rocks from Malani are rather scarce; some of these analyses sum to even much less than 97% (and that is so even after including the reported values of H_2O^+ and H_2O^- ; see for example, Bhushan and Chandrasekaran 2002). For other samples the reported concentration of P_2O_5 is zero. Thus, at present only 17 samples of basic rocks with an ‘acceptable’ quality of major-element data could be compiled in our application database, and two samples of intermediate rocks (with $(\text{SiO}_2)_{\text{adj}} < 53\%$) were included to increase this number and to check if these ‘nearly basic’ magmas provided similar results. The data for the Malani suite are plotted in figure 13(a–d). It appears that the results support the CRB as the probable tectonic setting because about 68.4 to 84.2% samples fall in this field (figure 13a–d). These % success rate calculations included the two intermediate rocks also considered in these diagrams. The conclusions for the Malani suite, however, should not be taken as definitive, because the number of samples

considered is rather small, but the indications are that a larger number of samples should confirm our preliminary results.

5.6.2 Bastar dyke complex, central India

The Precambrian mafic dykes that transect in this area of the Archaean granite gneisses of the southern Bastar craton have been studied by Srivastava *et al* (1996) and Srivastava and Singh (2003, 2004). The major-element data for 65 samples of basic rocks (mafic dykes) from this area plotted in our discriminant function diagrams (figure 14a–d) indicate the IAB as the more likely tectonic setting. These rocks show for the IAB % success rates that vary from 59.0 to 67.2%, which are rather low, and therefore, the IAB indications for Bastar should not be taken as definitive. Probably other lines of evidence are needed to confirm these tentative results.

We presented these two examples of Malani and Bastar to stress that representative data from ancient areas, especially for relatively less-altered rocks, are needed to draw statistically meaningful conclusions from discriminant function diagrams. The alteration effects on major-element chemistry may also complicate the results of the discrimination diagrams, which probably is the case of the Bastar area.

5.7 Final comments and future plans

Although the utility of these diagrams for ancient (Precambrian) rocks has been demonstrated by

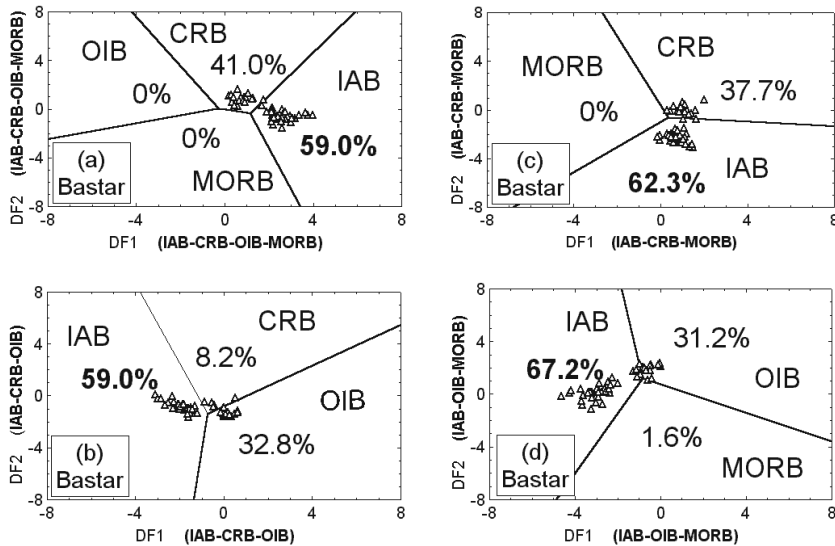


Figure 14. Four pertinent diagrams for samples of basic rocks from a cratonic area of India – the Bastar craton, central India (the Bastar mafic dykes). Note most samples fall in the IAB field although the corresponding % success rates (59.0 to 67.2%) are only moderately high. The figure parts (a) to (c) are the same as in figure 7, but (d) is the three-group IAB, OIB, and MORB (1–3–4).

some selected examples from India, the diagrams may not work well for highly altered and metamorphosed rocks. Their success will depend in a complex manner on the amount of changes reflected in the concentration ratios and the respective discriminant function coefficients. In such situation our suggestion is to use these new diagrams with extreme caution, and accept the results only if independent evidence for the inferred tectonic setting is available for a given area.

Work is currently in progress to extend our statistically-correct methodology of discrimination analysis to include trace elements, especially the so-called immobile elements, which might provide in future additional diagrams with probably a better performance for older areas than the existing ones. Additionally, use of isotopic ratios is also likely to be of great value in building new discriminant function diagrams; the utility of such ratios has already been documented by Verma (2002) for distinguishing the volcanism in southern Mexico from the Central American Volcanic Arc. Ironically, both areas correspond to the same oceanic plate (Cocos plate), and yet the tectonic setting inferred on land varies from the conventional continental arc in central America to an unexpected rift setting in southern Mexico. Similarly, incorporation of additional tectonic settings such as flood basalt province and continental arc as well as division of IAB into main-arc and back-arc (basin) settings and of MORB into normal-MORB and enriched-MORB (islands close to mid-ocean ridges) should also be considered. In the mean time, the utility of our new discriminant function diagrams

for complex settings as well as for older terranes has been documented beyond any reasonable doubt.

6. Conclusions

The use of discriminant analysis along with prior \log_e -transformation of concentration ratios provided a powerful and statistically-correct method for proposing five new diagrams for basic rocks from four tectonic settings. A comparison of the results of the training and testing sets revealed for all cases, consistently high rates of correct classification (overall rates of 84–97% for both sets). These rates were found to be higher than those obtained by the discriminant analysis of raw concentration data (i.e., without any data transformations). These new diagrams were used to show their usefulness in diverse tectonic classification problems of basic rocks, such as recognition of continental arc setting as similar to the island arc setting and the inference of tectonic setting of complex areas of Mexico as well as of older areas of India (the Deccan and two cratons – the Malani igneous suite and the Bastar dyke complex). An Excel template provided with this paper should facilitate the use of these new discriminant function diagrams.

Acknowledgements

We thank Alfredo Quiroz-Ruiz for scanning some of the literature application data and converting them to Excel data sheets and for solving the

computer problems faced during the preparation of high-quality figures for final printing. We are also grateful to two reviewers who opted to remain anonymous and the editor Hetu Sheth for their numerous constructive comments on an earlier version of this paper.

References

- Agrawal S 1999 Geochemical discrimination diagrams: a simple way of replacing eye-fitted boundaries with probability based classifier surfaces; *J. Geol. Soc. India* **54** 335–346.
- Agrawal S, Guevara M and Verma S P 2004 Discriminant analysis applied to establish major-element field boundaries for tectonic varieties of basic rocks; *Int. Geol. Rev.* **46** 575–594.
- Aitchison J 1986 *The statistical analysis of compositional data*; (London: Chapman and Hall) 416 p.
- Alam M A, Chandrasekharan D, Vaselli O, Capaccioni B, Manetti P and Santo P B 2004 Petrology of the prehistoric lavas and dyke of the Barren island, Andaman Sea, Indian Ocean; *Proc. Indian Acad. Sci. (Earth Planet. Sci.)* **113** 715–722.
- Aldanmaz E, Pearce J A, Thirlwall M F and Mitchell J G 2000 Petrogenetic evolution of late Cenozoic, post-collision volcanism in western Anatolia, Turkey; *J. Volcanol. Geotherm. Res.* **102** 67–95.
- Alici P, Temel A and Gourgaud A 2002 Pb-Nd-Sr isotope and trace element geochemistry of Quaternary extension-related alkaline volcanism: a case study of Kula region (western Anatolia, Turkey); *J. Volcanol. Geotherm. Res.* **115** 487–510.
- Aoki K-I, Yoshida T, Yusa K and Nakamura Y 1985 Petrology and geochemistry of the Nyamuragira volcano, Zaire; *J. Volcanol. Geotherm. Res.* **25** 1–28.
- Arculus R J 1976 Geology and geochemistry of the alkali basalt-andesite association of Grenada, Lesser Antilles island arc; *Geol. Soc. Am. Bull.* **87** 612–624.
- Armstrong-Altrin J S and Verma S P 2005 Critical evaluation of six tectonic setting discrimination diagrams using geochemical data of Neogene sediments from known tectonic settings; *Sedim. Geol.* **177** 115–129.
- Auchapt A, Dupuy C, Dostal J and Kanika M 1987 Geochemistry and petrogenesis of rift-related volcanic rocks from South Kivi (Zaire); *J. Volcanol. Geotherm. Res.* **31** 33–46.
- Bach W, Hegner E, Erzinger J and Satir M 1994 Chemical and isotopic variations along the superfast spreading East Pacific Rise from 6 to 30°S; *Contrib. Mineral. Petrol.* **116** 365–380.
- Bach W, Erzinger J, Dosso L, Bollinger C, Bougault H, Etoubleau J and Sauerwein J 1996 Unusually large Nb-Ta depletions in North Chile ridge basalts at 36°50' to 38°56'S: major element, trace element, and isotopic data; *Earth Planet. Sci. Lett.* **142** 223–240.
- Barberi F, Ferrara G, Santacroce R, Treuil M and Varet J 1975 A transitional basalt-pantellerite sequence of fractional crystallization, the Boina centre (Afar rift, Ethiopia); *J. Petrol.* **16** 22–56.
- Bardintzeff J M and Deniel C 1992 Magmatic evolution of Pacaya and Cerro Chiquito volcanological complex, Guatemala; *Bull. Volcanol.* **54** 267–283.
- Barrat J A, Joron J L, Taylor R N, Fourcade S, Nesbitt R W and Jahn B M 2003 Geochemistry of basalts from Manda Hararo, Ethiopia: LREE-depleted basalts in Central Afar; *Lithos* **69** 1–13.
- Barsdell M 1988 Petrology and petrogenesis of clinopyroxene-rich tholeiitic lavas, Merelava volcano, Vanuatu; *J. Petrol.* **29** 927–964.
- Barsdell M and Berry R F 1990 Origin and evolution of primitive island arc ankaramites from western Epi, Vanuatu; *J. Petrol.* **31** 747–777.
- Basu A R, Junwen W, Wankang H, Guanghong X and Tatsumoto M 1991 Major element, REE, and Pb, Nd and Sr isotopic geochemistry of Cenozoic volcanic rocks of eastern China: implications for their origin from suboceanic-type mantle reservoirs; *Earth Planet. Sci. Lett.* **105** 149–169.
- Bau M and Knittel U 1993 Significance of slab-derived partial melts and aqueous fluids for the genesis of tholeiitic and calc-alkaline island-arc basalts: evidence from Mt. Arayat, Philippines; *Chem. Geol.* **105** 233–251.
- Bell K and Peterson T 1991 Nd and Sr isotopic systematics of Shombole volcano, East Africa, and the links between nephelinites, phonolites, and carbonatites; *Geology* **19** 582–585.
- Bergmanis E C, Sinton J M and Trusdell F A 2000 Rejuvenated volcanism along the southwest rift zone, East Maui, Hawaii; *Bull. Volcanol.* **62** 239–255.
- Bevington P R and Robinson D K 2003 *Data reduction and error analysis for the physical sciences* (Third Edition); (Boston: McGraw Hill) 320 p.
- Bhushan S K and Chandrasekaran V 2002 Geology and geochemistry of the magmatic rocks of the Malani Igneous Suite and Tertiary Alkaline Province of western Rajasthan; *Geol. Surv. India Memoir.* **126** 1–181.
- Bloomer S H, Stern R J, Fisk E and Geschwind C H 1989 Shoshonitic volcanism in the northern Mariana arc. 1. Mineralogical and major and trace element characteristics; *J. Geophys. Res.* **94** 4469–4496.
- Bohrson W A and Reid M R 1995 Petrogenesis of alkaline basalts from Socorro Island, Mexico: Trace element evidence for contamination of ocean island basalt in the shallow ocean crust; *J. Petrol.* **100** 24,555–24,576.
- Bondre N R, Hart W K and Sheth H C 2006 Geology and geochemistry of the Sangamner mafic dike swarm, western Deccan volcanic province, India: implications for regional stratigraphy; *J. Geol.* **114** 155–170.
- Bougault H, Dmitriev L, Schilling J G, Sobolev A, Joron J L and Needham H D 1988 Mantle heterogeneity from trace elements: MAR triple junction near 14°N; *Earth Planet. Sci. Lett.* **88** 27–36.
- Brophy J G 1986 The Cold Bay volcanic center, Aleutian volcanic arc. I. Implications for the origin of hi-alumina arc basalt; *Contrib. Mineral. Petrol.* **93** 368–380.
- Brown G M, Holland J G, Sigurdsson H, Tomblin J F and Arculus R J 1977 Geochemistry of the Lesser Antilles volcanic island arc; *Geochim. Cosmochim. Acta* **41** 785–801.
- Bryan W B, Stice G D and Ewart A 1972 Geology, petrography, and geochemistry of the volcanic islands of Tonga; *J. Geophys. Res.* **77** 1566–1585.
- Bryan W B, Thompson G and Ludden J N 1981 Compositional variation in normal MORB from 22°–25°N: mid-Atlantic ridge and Kane fracture zone; *J. Geophys. Res.* **86** 11,815–11,836.
- Butler J C 1979 Trends in ternary petrologic variation diagrams – fact or fantasy?; *Am. Mineral.* **64** 1115–1121.
- Butler J C 1986 The role of spurious correlation in the development of a komatiite alteration model; *J. Geophys. Res.* **91** E275–E280.
- Butler J C and Woronow A 1986 Discrimination among tectonic settings using trace element abundances of basalts; *J. Geophys. Res.* **91** 10,289–10,300.

- Cambon P, Bougault H, Joron J L and Treuil M 1979 Basalts from the East Pacific Rise: an example of typical oceanic crust depleted in hygromagmaphile elements; In: *Init. Repts. DSDP* (eds) B T R Lewis and P Robinson et al (Washington DC: US Government Printing Office) 623–633.
- Camp V E, Roobol M J and Hooper P R 1991 The Arabian continental alkali basalt province: part II. Evolution of Harrats Khaybar, Ithnayn, and Kura, Kingdom of Saudi Arabia; *Geol. Soc. Am. Bull.* **103** 363–391.
- Carr M J 1984 Symmetrical and segmented variation of physical and geochemical characteristics of the Central American volcanic front; *J. Volcanol. Geotherm. Res.* **20** 231–252.
- Carr M J, Feigenson M D and Bennett E A 1990 Incompatible element and isotopic evidence for tectonic control of source mixing and melt extraction along the Central American arc; *Contrib. Mineral. Petrol.* **105** 369–380.
- Carracedo J C, Singer B, Jicha B, Guillou H, Rodríguez Badiola E, Meco J, Pérez Torrado F J, Gimeno D, Socorro S and Láinez A 2003 La erupción y el tubo volcánico del volcán Corona (Lanzarote, Islas Canarias); *Estudios Geol.* **59** 277–302.
- Chauvel C and Jahn B-M 1984 Nd-Sr isotope and REE geochemistry of alkali basalts from the Massif Central, France; *Geochim. Cosmochim. Acta* **48** 93–110.
- Chauvel C, McDonough W, Guille G, Maury M and Duncan R 1997 Contrasting old and young volcanism in Rurutu Island, Austral chain; *Chem. Geol.* **139** 125–143.
- Chayes F 1960 On correlation between variables of constant sum; *J. Geophys. Res.* **65** 4185–4193.
- Chayes F 1978 *Ratio correlation. A manual for students of petrology and geochemistry*; (Chicago and London: University of Chicago Press) 99 p.
- Chayes F 1983 Detecting nonrandom associations between proportions by tests of remaining-space variables; *Math. Geol.* **15** 197–206.
- Chayes F and Velde D 1965 On distinguishing basaltic lavas of circumoceanic and oceanic-island type by means of discriminant functions; *J. Amer. Sci.* **263** 206–222.
- Chen C Y, Frey F A, Garcia M O, Dalrymple G B and Hart S R 1991 The tholeiite to alkalic basalt transition at Haleakala volcano, Maui, Hawaii; *Contrib. Mineral. Petrol.* **106** 183–200.
- Chen C-Y, Frey F A and Garcia M O 1990 Evolution of alkalic lavas at Heleakala volcano, east Maui, Hawaii; *Contrib. Mineral. Petrol.* **105** 197–218.
- Cheng Q C, Macdougall J D and Lugmair G W 1993 Geochemical studies of Tahiti, Teahitia and Mahetia, Society Island Chain; *J. Volcanol. Geotherm. Res.* **55** 155–184.
- Chung S L, Jahn B M, Chen S J, Lee T and Chen C-H 1995 Miocene basalts in northwestern Taiwan: Evidence for EM-type mantle sources in the continental lithosphere; *Geochim. Cosmochim. Acta* **59** 549–555.
- Chung S-L, Sun S S, Tu K, Chen-Hong C and Lee C L 1994 Late Cenozoic basaltic volcanism around the Taiwan Strait, SE China: product of lithosphere–asthenosphere interaction during continental extension; *Chem. Geol.* **112** 1–20.
- Class C, Altherr R, Volker F, Eberz G and McCulloch M T 1994 Geochemistry of Pliocene to Quaternary alkali basalts from the Huri Hills, Northern Kenya; *Chem. Geol.* **113** 1–22.
- Cullen A and McBirney A R 1987 The volcanic geology and petrology of Isla Pinta, Galapagos archipelago; *Geol. Soc. Am. Bull.* **98** 294–301.
- Davidson J P and Wilson I R 1989 Evolution of an alkali basalt-trachyte suite from Jebel Marra volcano, Sudan, through assimilation and fractional crystallization; *Earth Planet. Sci. Lett.* **95** 141–160.
- De Mulder M, Hertogen J, Deutsch S and André L 1986 The role of crustal contamination in the potassic suite of the Karisimbi volcano (Virunga, African Rift Valley); *Chem. Geol.* **57** 117–136.
- Defant M J, Jacques D, Maury R C, De Boer J and Joron J-L 1989 Geochemistry and tectonic setting of the Luzon arc, Philippines; *Geol. Soc. Am. Bull.* **101** 663–672.
- Defant M J, Maury R C, Ripley E M, Feigenson M D and Jacques D 1991 An example of island-arc petrogenesis: geochemistry and petrology of the southern Luzon arc, Philippines; *J. Petrol.* **32** 455–500.
- Defant M J, Sherman S, Maury R C, Bellon H, de Boer J, Davidson J and Kepezhinskas P 2001 The geology, petrology, and petrogenesis of Saba Island, Lesser Antilles; *J. Volcanol. Geotherm. Res.* **107** 87–111.
- Demant A 1981 *L'axe néo-volcanique transmexicain, étude volcanologique et pétrographique, signification géodynamique*. Ph.D. thesis, 259 p. and appendix. Université de Droit, d'Economie et des Sciences d'Aix-Marseille.
- Deniel C, Vidal P, Coulon C, Vellutini P and Piguet P 1994 Temporal evolution of mantle sources during continental rifting: The volcanism of Djibouti (Afar); *J. Geophys. Res.* **99** 2853–2869.
- Deruelle B 1982 Petrology of the Plio-Quaternary volcanism of the south-central and meridional Andes; *J. Volcanol. Geotherm. Res.* **14** 77–124.
- Devine J D 1995 Petrogenesis of the basalt-andesite-dacite association of Grenada, Lesser Antilles island arc, revisited; *J. Volcanol. Geotherm. Res.* **69** 1–33.
- Dosso L, Bougault H, Beuzart P, J-Y C and Joron J-L 1988 The geochemical structure of the South-East Indian Ridge; *Earth Planet. Sci. Lett.* **88** 47–59.
- Dosso L, Bougault H and Joron J-L 1993 Geochemical morphology of the north Mid-Atlantic Ridge, 10°–24°N: trace element-isotope complementarity; *Earth Planet. Sci. Lett.* **120** 443–462.
- Doucet S, Weis D, Scoates J S, Debaille V and Giret A 2004 Geochemical and Hf-Pb-Sr-Nd isotopic constraints on the origin of the Amsterdam-St Paul (Indian Ocean) hotspot basalts; *Earth Planet. Sci. Lett.* **218** 179–195.
- Duncker K E, Wolff J A, Harmon R S, Leat P T, Dickin A P and Thompson R N 1991 Diverse mantle and crustal components in lavas of the NW Cerros del Rio volcanic field, Rio Grande Rift, New Mexico; *Contrib. Mineral. Petrol.* **108** 331–345.
- Dupuy C, Dostal J, Marcelot G, Bougault H, Joron J L and Treuil M 1982 Geochemistry of basalts from central and southern New Hebrides arc: implication for their source rock composition; *Earth Planet. Sci. Lett.* **60** 207–225.
- Dupuy C, Barszczus H G, Liotard J M and Dostal J 1988 Trace element evidence for the origin of ocean island basalts: an example from the Austral Islands (French Polynesia); *Contrib. Mineral. Petrol.* **98** 293–302.
- Dupuy C, Barszczus H G, Dostal J, Vidal P and Liotard J-M 1989 Subducted and recycled lithosphere as the mantle source of Ocean Island basalts from southern Polynesia, central Pacific; *Chem. Geol.* **77** 1–18.
- Duraiswami R A, Bondre N R and Dole G 2004 Possible lava tube system in a hummocky lava flow at Daund, western Deccan volcanic province, India; *Proc. Indian Acad. Sci. (Earth Planet. Sci.)* **113** 819–829.
- Edwards C M H, Menzies M A, Thirlwall M F, Morris J D, Leeman W P and Harmon R S 1994 The transition to potassic alkaline volcanism in Island arcs: The Ringgit-Beser complex, East Java, Indonesia; *J. Petrol.* **35** 1557–1595.

- Elliott T, Plank T, Zindler A, White W M and Bourdon B 1997 Element transport from slab to volcanic front at the Mariana arc; *J. Geophys. Res.* **102** 14,991–15,019.
- Engel A E J and Engel C G 1964 Igneous rocks of the East Pacific Rise; *Science* **146** 477–485.
- Ewart A, Brothers R N and Mategón A 1977 An outline of the geology and geochemistry, and the possible petrogenetic evolution of the volcanic rocks of the Tonga-Kermadec-New Zealand island arc; *J. Volcanol. Geotherm. Res.* **2** 205–270.
- Fan Q and Hooper P R 1991 The Cenozoic basaltic rocks of eastern China: petrology and chemical composition; *J. Petrol.* **32** 765–810.
- Ferrari L, Tagami T, Eguchi M, Orozco-Esquivel M T, Petrone C M, Jacobo-Albarrán J and López-Martínez M 2005 Geology, geochronology and tectonic setting of Late Cenozoic volcanism along the southwestern Gulf of Mexico: the Eastern Alkaline Province revisited; *J. Volcanol. Geotherm. Res.* **146** 284–306.
- Ferriz H and Mahood G A 1987 Strong compositional zonation in a silicic magmatic system: Los Humeros, Mexican Neovolcanic Belt; *J. Petrol.* **28** 171–209.
- Feuerbach D L, Smith E I, Walker J D and Tangeman J A 1993 The role of the mantle during crustal extension: constraints from geochemistry of volcanic rocks in the Lake Mead area, Nevada and Arizona; *Geol. Soc. Am. Bull.* **105** 1561–1575.
- Fitton J G, James D and Leeman W P 1991 Basic magmatism associated with Late Cenozoic extension in the western United States: compositional variations in space and time; *J. Geophys. Res.* **96** 13,693–13,711.
- Foden J D and Varne R 1980 The petrology and tectonic setting of Quaternary-Recent volcanic centres of Lombok and Sumbawa, Sunda arc; *Chem. Geol.* **30** 210–226.
- Fontaine-Vive M and De Goer De Herve A 1984 Deux exemples de mélange par brassage mécanique entre laves alcalines contrastées dans le strato-volcan du Cantal (Massif Central Français). Implications volcanologiques; *Bull. Volcanol.* **47** 807–825.
- Frey F A, Gerlach D C, Hickey R L, Lopez-Escobar L and Munizaga-Villavicencio F 1984 Petrogenesis of the Laguna del Maule volcanic complex, Chile (36°S); *Contrib. Mineral. Petrol.* **88** 133–149.
- Frey F A, Garcia M O and Roden M F 1994 Geochemical characteristics of Koolau volcano: implications of intershield geochemical differences among Hawaiian volcanoes; *Geochim. Cosmochim. Acta* **58** 1441–1462.
- Furman T, Btyce J G, Karson J and Iotti A 2004 East African rift system (EARS) plume structure: insights from Quaternary mafic lavas of Turkana, Kenya; *J. Petrol.* **45** 1069–1088.
- Gamble J A, Wright I C, Woodhead J D and McCulloch M T 1995 Arc and back-arc geochemistry in the southern Kermadec arc–Ngatoro basin and offshore Taupo volcanic zone, SW Pacific; In: *Volcanism associated with extension at consuming plate margins* (ed.) J L Smellie, Geological Society Special Publication 193–212.
- García M O, Rhodes J M, Wolfe E W, Ulrich G E and Ho R A 1992 Petrology of lavas from episodes 2–47 of the Puu Oo eruption of Kilauea Volcano, Hawaii: evaluation of magmatic processes; *Bull. Volcanol.* **55** 1–16.
- García-Valladares O, Sánchez-Upton P and Santoyo E 2006 Numerical modelling of flow processes inside geothermal wells: An approach for predicting production characteristics with uncertainties; *Ener. Convers. Managem.* **47** 1621–1643.
- Geist D J, McBirney A R and Duncan R A 1986 Geology and petrogenesis of lavas from San Cristobal Islands, Galagos Archipelago; *Geol. Soc. Am. Bull.* **97** 555–566.
- Gerlach D C, Frey F A, Moreno-Roa H and Lopez-Escobar L 1988 Recent volcanism in the Puyehue-Cordon Caulle region, southern Andes, Chile (40.5°S): petrogenesis of evolved lavas; *J. Petrol.* **29** 333–382.
- Gibson S A, Thompson R N, Leat P T, Dickin A P, Morrison M A, Hendry G L and Mitchell J G 1992 Asthenosphere-derived magmatism in the Rio Grande rift, western USA: implications for continental break-up; In: *Magmatism and the causes of continental break-up*; (eds) Storey B C, Alabaster T and Pankhurst R J, Geological Society Special Publication 61–89.
- Gómez-Tuena A, LaGatta A B, Langmuir C H, Goldstein S L, Ortega-Gutiérrez F and Carrasco-Núñez G 2003 Temporal control of subduction magmatism in the eastern Trans-Mexican Volcanic Belt: mantle sources, slab contributions, and crustal contamination; *G3* **4** 10.1029/2003GC000524.
- Guevara M, Verma S P, Velasco-Tapia F, Lozano-Santa Cruz L and Girón P 2005 Comparison of linear regression models for quantitative geochemical analysis: Example of x-ray fluorescence spectrometry; *Geostand. Geoanal. Res.* **29** 271–284.
- Haase K M, Devey C W, Mertz D F, Stoffers P and Dieter G-S 1996 Geochemistry of lavas from Mohns Ridge, Norwegian-Greenland Sea: implications for melting conditions and magma sources near Jan Mayen; *Contrib. Mineral. Petrol.* **123** 223–237.
- Hall L S and Sinton J M 1996 Geochemical diversity of the large lava field on the flank of the East Pacific Rise at 8°17'S; *Earth Planet. Sci. Lett.* **142** 241–251.
- Han B-F, Wang S-G and Kagami H 1999 Trace element and Nd–Sr isotope constraints on origin of the Chifeng flood basalts, North China; *Chem. Geol.* **155** 187–199.
- Harpp K S, Fornari D J, Geist D J and Kurz M D 2003 Genovesa submarine ridge: a manifestation of plume-ridge interaction in the northern Galápagos islands; *G3* **4** 10.1029/2003GC000531.
- Hart W K, WoldeGabriel G, Walter R C and Mertzman S A 1989 Basaltic volcanism in Ethiopia: constraints on continental rifting and mantle interactions; *J. Geophys. Res.* **94** 7731–7748.
- Hazlett R W 1987 Geology of San Cristobal volcanic complex, Nicaragua; *J. Volcanol. Geotherm. Res.* **33** 223–230.
- Hegner E and Smith I E M 1992 Isotopic compositions of late Cenozoic volcanics from southeast Papua New Guinea: evidence for multi-component sources in arc and rift environments; *Chem. Geol.* **97** 233–249.
- Hekinian R, Francheteau J, Armijo R, Cogné J P, Constantin M, Girardeau J, Hey R, Naar D F and Searle R 1996 Petrology of the Easter microplate region in the South Pacific; *J. Volcanol. Geotherm. Res.* **72** 259–289.
- Hekinian R, Stoffers P, Devey C, Ackerman D, Hémond C and O'Connor J 1997 Intraplate versus ridge volcanism on the Pacific-Antarctic Ridge near 37°S–111°W; *J. Geophys. Res.* **102** 12,265–12,286.
- Hémond C, Devey C W and Chauvel C 1994 Source compositions and melting processes in the Society and Austral plumes (South Pacific Ocean): element and isotope (Sr, Nd, Pb, Th) geochemistry; *Chem. Geol.* **115** 7–45.
- Hickey R L, Frey F A, Gerlach D C and Lopez-Escobar L 1986 Multiple sources for basaltic arc rocks from the southern volcanic zone of the Andes (34°–41°S): trace element and isotopic evidence for contributions from subducted oceanic crust, mantle, and continental crust; *J. Geophys. Res.* **91** 5963–5983.
- Hickey-Vargas R, Moreno Roa H, Lopez Escobar L and Frey F A 1989 Geochemical variations in Andean basaltic and silicic lavas from the Villarrica-Lanin volcanic chain

- (39.5°S): an evaluation of source heterogeneity, fractional crystallization and crustal assimilation; *Contrib. Mineral. Petrol.* **103** 361–386.
- Hole M J, Saunders A D, Marriner G F and Tarney J 1984 Subduction of pelagic sediments: implications for the origin of Ce-Anomalous basalts from the Marianas Islands; *J. Geol. Soc. London* **141** 453–472.
- Hoogewerff J A, van Bergen M J, Vroon P Z, Hertogen J, Wordel R, Sneyers A, Nasution A, Varekamp J C, Moens H L E and Mouchel D 1997 U-series, Sr-Nd-Pb isotope and trace-element systematics across an active island arc-continent collision zone: implications for element transfer at the slab-wedge interface; *Geochim. Cosmochim. Acta* **61** 1057–1072.
- Hsu C-N, Chen J-C and Ho K-S 2000 Geochemistry of Cenozoic volcanic rocks from Kirin Province, northeast China; *Geochem. J.* **34** 33–58.
- Ielsch G, Caroff M, Barszczus H G, Maury R C, Guillou H, Guille G and Cotten J 1998 Géochimie des basalts de l'île de Ua Huka (archipel des MARquises): variation du taux de fusion partielle et hétérogénéité de la source mantellique; *C. R. Acad. Sci. Paris* **326** 413–420.
- Ishikawa T, Tera F and Nakazawa T 2001 Boron isotope and trace element systematics of the three volcanic zones in the Kamchatka arc; *Geochim. Cosmochim. Acta* **65** 4523–4537.
- Johnson C M and Lipman P W 1988 Origin of metaluminous and alkaline volcanic rocks of the Latir volcanic field, northern Rio Grande rift, New Mexico; *Contrib. Mineral. Petrol.* **100** 107–128.
- Kabeto K, Sawada Y, Iizumi S and Wakatsuki T 2001 Mantle sources and magma-crust interactions in volcanic rocks from northern Kenya rift: geochemical evidence; *Lithos* **56** 111–136.
- Kay S M and Kay R W 1994 Aleutian magmas in space and time; In: *Geology of North America* (eds Plafker G and Berg H C (USA: Geological Society of America) 687–722.
- Kay S M, Kay R W and Citron G P 1982 Tectonic controls on tholeiitic and calc-alkaline magmatism in the Aleutian arc; *J. Geophys. Res.* **87** 4051–4072.
- Kempton P D, Fitton J G, Hawkesworth C J and Ormerod D S 1991 Isotopic and trace element constraints on the composition and evolution of the lithosphere beneath the Southwestern United States; *J. Geophys. Res.* **96** 13,713–13,735.
- Kepezhinskas P, McDermott F, Defant M J, Hochstaedter A, Drummond M S, Hawkesworth C J, Koloskov A, Maury R C and Bellon H 1997 Trace element and Sr-Nd-Pb isotopic constraints on a three-component model of Kamchatka arc petrogenesis; *Geochim. Cosmochim. Acta* **61** 577–600.
- Kimura J-I, Manton W I, Sun C-H, Iizumi S, Yoshida T and Stern R J 2002 Chemical diversity of the Ueno basalts, Central Japan: identification of mantle and crustal contributions to arc basalts; *J. Petrol.* **43** 1923–1946.
- Kita I, Yamamoto M, Asakawa Y, Nakagawa M, Taguchi S and Hasegawa H 2001 Contemporaneous ascent of within-plate type and island-arc type magmas in the Beppu-Shimabara graben system, Kyushu island, Japan; *J. Volcanol. Geotherm. Res.* **111** 99–109.
- Knittel U, Hegner E, Bau M and Satir M 1997 Enrichment processes in the sub-arc mantle: a Sr-Nd-Pb isotopic and REE study of primitive arc basalts from the Philippines; *Can. Mineral.* **35** 327–346.
- Kochhar N 1984 Malani igneous suite: hot spot magmatism and cratonisation of the northern part of the Indian shield; *J. Geol. Soc. India* **25** 155–161.
- Lassiter J C, Blichert-Toft J and Hauri E H 2003 Isotope and trace element variations in lavas from Raivavae and Rapa, Cook-Austral islands: constraints on the nature of HIMU- and EM-mantle and the origin of mid-plate volcanism in French Polynesia; *Chem. Geol.* **202** 115–138.
- Le Bas M J, Le Maitre R W, Streckeisen A and Zanettin B 1986 A chemical classification of volcanic rocks based on the total alkali-silica diagram; *J. Petrol.* **27** 745–750.
- Le Maitre R W 1976 Some problems of the projection of chemical data into mineralogical classifications; *Contrib. Mineral. Petrol.* **56** 181–189.
- Le Roex A P and Dick H J B 1981 Petrography and geochemistry of basaltic rocks from the Conrad fracture zone on the America-Antarctica Ridge; *Earth Planet. Sci. Lett.* **54** 117–138.
- Le Roex A P and Erlank A J 1982 Quantitative evaluation of fractional crystallization in Bouvet Island lavas; *J. Volcanol. Geotherm. Res.* **13** 309–338.
- Le Roex A P, Dick H J B, Gulen L, Reid A M and Erlank A J 1987 Local and regional heterogeneity in MORB from the Mid-Atlantic Ridge between 54.5°S and 51°S: evidence for geochemical enrichment; *Geochim. Cosmochim. Acta* **51** 541–555.
- Le Roex A P, Frey F A and Richardson S H 1996 Petrogenesis of lavas from the AMAR Valley and Narrowgate region of the FAMOUS Valley, 36°–37°N on the Mid-Atlantic Ridge; *Contrib. Mineral. Petrol.* **124** 167–184.
- Le Roex A P, Späth A and Zartman R E 2001 Lithospheric thickness beneath the southern Kenya rift: implications from basalt geochemistry; *Contrib. Mineral. Petrol.* **142** 89–106.
- Le Roux P J, Le Roux A P and Schilling J-G 2002a Crystallization process beneath the southern Mid-Atlantic Ridge (40–55°S), evidence for high pressure initiation of crystallization; *Contrib. Mineral. Petrol.* **142** 582–602.
- Le Roux P J, Le Roux A P, Schilling J-G, Shimizu N, Perkins W W and Pearce N J G 2002b Mantle heterogeneity beneath the southern Mid-Atlantic Ridge: trace element evidence for contamination of ambient asthenospheric mantle; *Earth Planet. Sci. Lett.* **203** 479–498.
- Liotard J M, Barszczus H G, Dupuy C and Dostal J 1986 Geochemistry and origin of basaltic lavas from Marquesas Archipelago, French Polynesia; *Contrib. Mineral. Petrol.* **92** 260–268.
- Lipman P W, Rhodes R M and Dalrymple G B 1990 The Ninole Basalt – Implications for the structural evolution of Mauna Loa volcano, Hawaii; *Bull. Volcanol.* **53** 1–19.
- Liu C-Q, Masuda A and Xie G-H 1992 Isotope and trace-element geochemistry of alkali basalts and associated megacrysts from the Huangyishan volcano, Kuandian, Liaoning, NE China; *Chem. Geol.* **97** 219–231.
- Liu C-Q, Masuda A and Xie G-H 1994 Major- and trace-element compositions of Cenozoic basalts in eastern China: petrogenesis and mantle source; *Chem. Geol.* **114** 19–42.
- Lonsdale P, Blum N and Puchelt H 1992 The RRR triple junction at the southern end of the Pacific-Cocos East Pacific Rise; *Earth Planet. Sci. Lett.* **109** 73–85.
- López-Escobar L, Kilian R, Kempton P D and Tagiri M 1993 Petrography and geochemistry of Quaternary rocks from the southern volcanic zone of the Andes between 41°30' and 46°00'S, Chile; *Rev. Geol. Chile* **20** 33–35.
- Luhr J F, Aranda-Gómez J J and Housh T B 1995 San Quintín volcanic field, Baja California Norte, México: geology, petrology, and geochemistry; *J. Geophys. Res.* **100** 10,353–10,380.
- Lum C C L, Leeman W P, Foland K A, Kargel J A and Fitton J G 1989 Isotopic variations in continental basaltic lavas as indicators of mantle heterogeneity: examples

- from the western U.S. Cordillera; *J. Geophys. Res.* **94** 7871–7884.
- Maaløe S, James D, Smedley P, Petersen S and Germann L B 1992 The Koloa volcanic suite of Kauai, Hawaii; *J. Petrol.* **33** 761–784.
- Macdonald R, Davies G R, Upton B G J, Denkley P N, Smith M and Leat P T 1995 Petrogenesis of Silali volcano, Gregory rift, Kenya; *J. Geol. Soc. London* **152** 703–720.
- Macdonald R, Rogers N W, Fitton J G, Black S and Smith M 2001 Plume-lithosphere interactions in the generation of the basalts of the Kenya rift, East Africa; *J. Petrol.* **42** 877–900.
- Maheshwari A, Coltorti M, Sial AN and Mariano G 1996 Crustal influences in the petrogenesis of the Malani rhyolite, southwestern Rajasthan: combined trace element and oxygen isotope constraints; *J. Geol. Soc. India* **47** 611–619.
- Mahoney J, Le Roex A P, Peng Z, Fisher R L and Natland J H 1992 Southwestern limits of Indian Ocean ridge mantle and the origin of low $^{206}\text{Pb}/^{204}\text{Pb}$ Mid-Ocean Ridge Basalt: isotope systematics of the central southwestern Indian Ridge (17° – 50°E); *J. Geophys. Res.* **97** 19,771–19,790.
- McMillan N J, Dickin A P and Haag D 2000 Evolution of magma source regions in the Rio Grande rift, southern New Mexico; *Geol. Soc. Am. Bull.* **112** 1582–1593.
- Melluso L, Beccaluva L, Brotzu P, Gregnanin A, Gupta A K, Morbidelli L and Traversa G 1995 Constraints on the mantle sources of the Deccan Traps from the petrology and geochemistry of the basalts of Gujarat state (western India); *J. Petrol.* **36** 1393–1432.
- Melluso L, Barbieri M and Beccaluva L 2004 Chemical evolution, petrogenesis, and regional chemical correlations of the flood basalt sequence in the central Deccan Traps, India; *Proc. Indian Acad. Sci. (Earth Planet. Sci.)* **113** 587–603.
- Middlemost E A K 1989 Iron oxidation ratios, norms and the classification of volcanic rocks; *Chem. Geol.* **77** 19–26.
- Miklius A, Flower M F J, Huijsmans J P P, Mukasa S B and Castillo P 1991 Geochemistry of lavas from Taal volcano, southwestern Luzon, Philippines: evidence for multiple magma supply systems and mantle source heterogeneity; *J. Petrol.* **32** 593–627.
- Monzier M, Robin C, Eissen J-P and Cotten J 1997 Geochemistry vs. seismo-tectonics along the volcanic New Hebrides Central Chain (Southwest Pacific); *J. Volcanol. Geotherm. Res.* **78** 1–29.
- Morrison D F 1990 *Multivariate statistical methods* (Third Edition); (New York: McGraw-Hill) 495 p.
- Morton-Bermea O 1990 *Zur petrologie des Alkaligesteins-Intrusivkomplexes der Sierra de Picachos (Nuevo León, Mexiko)*; Diplomarbeit thesis. Universität Karlsruhe, Karlsruhe, Germany, 115 p.
- Moyer T C and Esperança S 1989 Geochemical and isotopic variations in a bimodal magma system: the Kaiser Spring volcanic field, Arizona; *J. Geophys. Res.* **94** 7841–7859.
- Mullen E D 1983 MnO/TiO₂/P₂O₅: a minor element discrimination for basaltic rocks of oceanic environments and its implications for petrogenesis; *Earth Planet. Sci. Lett.* **62** 53–62.
- Myers J D, Marsh B D and Sinha A K 1985 Strontium isotopic and selected trace element variations between two Aleutian volcanic centers (Adak and Atka): implications for the development of arc volcanic plumbing systems; *Contrib. Mineral. Petrol.* **91** 221–234.
- Myers J D, Marsh B D, Frost C D and Linton J A 2002 Petrologic constraints on the spatial distribution of crustal magma chambers, Atka volcanic center, central Aleutian arc; *Contrib. Mineral. Petrol.* **143** 567–586.
- Nakagawa M, Ishizuka Y, Kudo T, Yoshimoto M, Hirose W, Ishizaki Y, Gouchi N, Katsui Y, Solovyov A W, Steinberg G S and Abdurakhmanov A I 2002 Tyatya volcano, southwestern Kuril arc: recent eruptive activity inferred from widespread tephra; *The Island Arc* **11** 236–254.
- Negendank J F W, Emmermann R, Krawczyk R, Mooser F, Tobschall H and Werle D 1985 Geological and geochemical investigations on the eastern Trans Mexican Volcanic Belt; *Geofis. Int.* **24** 477–575.
- Nelson S A, Gonzalez-Caver E and Kyser T K 1995 Constraints on the origin of alkaline and calc-alkaline magmas from the Tuxtla Volcanic Field, Veracruz, Mexico; *Contrib. Mineral. Petrol.* **122** 191–211.
- Nick K 1988 Mineralogische, Geochemische und Petrographische Untersuchungen in der Sierra de San Carlos (Mexiko); Unpubl. Doctoral thesis, Universitaet (TH) Fridericiana Karlsruhe, Karlsruhe, Germany, 167 p.
- Norman M D and García M O 1999 Primitive magmas and source characteristics of the Hawaiian plume: petrology and geochemistry of shield picrites; *Earth Planet. Sci. Lett.* **168** 27–44.
- Nye C J and Reid M R 1986 Geochemistry of primary and least fractionated lavas from Okmok volcano, central Aleutians: implications for arc magma genesis; *J. Geophys. Res.* **91** 10,271–10,287.
- Ohara Y, Fujioka K, Ishizuka O and Ishii T 2002 Peridotites and volcanics from the Yap arc system: implications for tectonics of the southern Philippine Sea plate; *Chem. Geol.* **189** 35–53.
- Orozco-Esquivel M T 1995 *Zur Petrologie des Vulkangebietes von Palma-Sola, Mexiko. Ein Beispiel fuer den Uebergang von anorogenem zu orogenem Vulkanismus*; Doctoral thesis. Universitaet Karlsruhe, Karlsruhe, Germany, 167 p.
- Panter K S, Hart S R, Kyle P, Blusztanjn J and Witch T 2000 Geochemistry of late Cenozoic basalts from the Crary mountains: characterization of mantle sources in Marie Byrd land, Antarctica; *Chem. Geol.* **165** 215–241.
- Pearce J A and Cann J R 1971 Ophiolite origin investigated by discriminant analysis using Ti, Zr and Y; *Earth Planet. Sci. Lett.* **12** 339–349.
- Pearce J A and Cann J R 1973 Tectonic setting of basic volcanic rocks determined using trace element analyses; *Earth Planet. Sci. Lett.* **19** 290–300.
- Pearce J A 1976 Statistical analysis of major element patterns in basalts; *J. Petrol.* **17** 15–43.
- Peccerillo A, Barberio M R, Yirgu G, Ayalew D, Barbieri M and Wu T W 2003 Relationships between mafic and peralkaline silicic magmatism in continental rift settings: a petrological, geochemical and isotopic study of the Gedemsa volcano, central Ethiopian rift; *J. Petrol.* **44** 2003–2032.
- Peng Z C, Zartman R E, Futa K and Chen D G 1986 Pb-, Sr- and Nd-isotopic systematics and chemical characteristics of Cenozoic basalts, eastern China; *Chem. Geol.* **59** 3–33.
- Peng Z X, Mahoney J, Hooper P, Harris C and Beane J 1994 A role for lower continental crust in flood basalt genesis? Isotopic and incompatible study of the lower six formations of the western Deccan traps; *Geochim. Cosmochim. Acta* **58** 267–288.
- Perry F V, Baldrige W S and DePaolo D J 1987 Role of asthenosphere and lithosphere in the genesis of Late Cenozoic basaltic rocks from the Rio Grande and adjacent regions of the southwestern United States; *J. Geophys. Res.* **92** 9193–9213.
- Perry F V, Baldrige W S, DePaolo D J and Shafiqullah M 1990 Evolution of a magmatic system during continental extension: the mount Taylor volcanic field, New Mexico; *J. Geophys. Res.* **95** 19,327–19,348.

- Price R C, Kennedy A K, Riggs-Sneeringer M and Frey F A 1986 Geochemistry of basalts from the Indian Ocean triple junction: implications for the generation and evolution of Indian Ocean ridge basalts; *Earth Planet. Sci. Lett.* **78** 379–396.
- Rajani R P, Banakar V K, Parthiban G, Mudholkar A V and Chodankar A R 2005 Compositional variation of ferromanganese crusts of the Afanasiy-Nikitin seamount, equatorial Indian Ocean; *J. Earth Syst. Sci.* **114** 51–61.
- Ramírez Fernández J A 1996 *Zur petrogenese des alkalikomplexes der Sierra de Tamaulipas, NE-Mexiko*; Doctoral thesis. Albert-Ludwigs-Universitaet, Freiburg, Germany, 316 p.
- Raos A M and Crawford A J 2004 Basalts from the Afate Island group, central section of the Vanuatu arc, SW Pacific: geochemistry and petrogenesis; *J. Volcanol. Geotherm. Res.* **134** 35–64.
- Reyment R A 1987 Multivariate analysis in Geoscience: fads, fallacies and the future; *Chemom. Intell. Lab. Syst.* **2** 79–91.
- Reyment R A and Savazzi E 1999 *Aspects of multivariate statistical analysis in geology*; (Amsterdam: Elsevier) 285 p.
- Robin C 1976 Présence simultanée de magmatismes de significations tectoniques opposées dans l'Est du Mexique; *Bull. Soc. Geol. Fr.* **18** 1637–1645.
- Robin C 1982 Relations volcanologie-magmatologie-géodynamique: application au passage entre volcanismes alcalin et andésitique dans le sud Mexicain (Axe Transmexicain et Province Alcaline Orientale); *Annal. Sci. Univ. Clermont-Ferrand II* **31** 503 p.
- Robin C and Tournon J 1978 Spatial relations of andesitic and alkaline provinces of Mexico and Central America; *Can. J. Earth Sci.* **15** 1633–1641.
- Rollinson H R 1993 *Using geochemical data: evaluation, presentation, interpretation*; (Essex: Longman Scientific Technical) 344 p.
- Romick J D, Perfit M R, Swanson S E and Shuster R D 1990 Magmatism in the eastern Aleutian arc: temporal characteristic of igneous activity on Akutan Island; *Contrib. Mineral. Petrol.* **104** 700–721.
- Sakuyama M and Nesbitt R W 1986 Geochemistry of the Quaternary volcanic rocks of the Northeast Japan arc; *J. Volcanol. Geotherm. Res.* **29** 413–450.
- Santoyo E, Guevara M and Verma S P 2006 Determination of lanthanides in international geochemical reference materials by reversed-phase high performance liquid chromatography: An application of error propagation theory to estimate total analysis uncertainties; *J. Chromatogr. A* (in press).
- Schilling J-G, Kingsley R H and Devine J D 1982 Galapagos hot spot-spreading center system. 1. Spatial petrological and geochemical variations (83°W–101°W); *J. Geophys. Res.* **87** 5593–5610.
- Schilling J-G, Zajac M, Evans R, Johnston T, White W, Devine J D and Kingsley R 1983 Petrologic and geochemical variations along the Mid-Atlantic Ridge from 29°N to 73°N; *J. Am. Sci.* **283** 510–586.
- Sensarma S, Hoernes S and Mukhopadhyay D 2004 Relative contributions of crust and mantle to the origin of the Bijli rhyolite in a palaeoproterozoic bimodal volcanic sequence (Dongargarh Group), central India; *Proc. Indian Acad. Sci. (Earth Planet. Sci.)* **113** 619–648.
- Sharma K K 2004 The Neoproterozoic Malani magmatism of the northwestern Indian shield: implications for crust-building processes; *Proc. Indian Acad. Sci. (Earth Planet. Sci.)* **113** 795–807.
- Sheth H C, Torres-Alvarado I S and Verma S P 2000 Beyond subduction and plumes: a unified tectonic-petrogenetic model for the Mexican Volcanic Belt; *Int. Geol. Rev.* **42** 1116–1132.
- Sheth H C, Torres-Alvarado I S and Verma S P 2002 What is the "calc-alkaline rock series"?; *Int. Geol. Rev.* **44** 686–701.
- Sheth H C, Mahoney J J, Baxter A N 2003 Geochemistry of lavas from Mauritius, Indian Ocean: Mande source's and petrogenesis; *Int. Geol. Rev.* **45** 780–797.
- Sheth H C, Mahoney J J and Chandrasekharam D 2004 Geochemical stratigraphy of Deccan flood basalts of the Bijasan Ghat section, Satpura range, India; *J. Asian Earth Sci.* **23** 127–139.
- Shimizu N and Arculus R J 1975 Rare earth element concentrations in a suite of basanitoids and alkali olivine basalts from Grenada, Lesser Antilles; *Contrib. Mineral. Petrol.* **50** 231–240.
- Shinjo R 1998 Petrochemistry and tectonic significance of the emerged late Cenozoic basalts behind the Okinawa Trough Ryukyu arc system; *J. Volcanol. Geotherm. Res.* **80** 39–53.
- Shinjo R, Woodhead J D and Hergt J M 2000 Geochemical variation within the northern Ryukyu: magma source compositions and geodynamic implications; *Contrib. Mineral. Petrol.* **140** 263–282.
- Siebert L and Carrasco-Núñez G 2002 Late-Pleistocene to precolumbian behind-the-arc mafic volcanism in the eastern Mexican Volcanic Belt; implications for future hazards; *J. Volcanol. Geotherm. Res.* **115** 179–205.
- Sims K W W, Blichert-Toft J, Fornari D J, Perfit M R, Goldstein S J, Johnson P, DePaolo D J, Hart S R, Murrell M T, Michael P J, Layne G D and Ball L A 2003 Aberrant youth: chemical and isotopic constraints on the origin of off-axis lavas from the East Pacific Rise, 9°–10°N; *G3* **4** 10.1029/2002GC000443.
- Singer B S and Kudo A M 1986 Assimilation-fractional crystallization of Polvadera Group rocks in the northwestern Jemez volcanic field, New Mexico; *Contrib. Mineral. Petrol.* **94** 374–386.
- Singer B S, Myers J D and Frost C D 1992a Mid-Pleistocene lavas from the Seguam volcanic center, central Aleutian arc: closed-system fractional crystallization of a basalt to rhyodacite eruptive suite; *Contrib. Mineral. Petrol.* **110** 87–112.
- Singer B S, Myers J D and Frost C D 1992b Mid-Pleistocene basalt from the Seguam volcanic center, central Aleutian arc, Alaska: local lithospheric structures and source variability in the Aleutian arc; *J. Geophys. Res.* **97** 4561–4578.
- Singh B and Kumar S 2005 Petrogenetic appraisal of early Palaeozoic granitoids of Kinnaur district, higher Himachal Himalaya, India; *Gondwana Res.* **8** 67–76.
- Singh K A and Vallinayagam G 2004 Geochemistry and petrogenesis of anorogenic basic volcanic-plutonic rocks of the Kundal area, Malani igneous suite, western Rajasthan, India; *Proc. Indian Acad. Sci. (Earth Planet. Sci.)* **113** 667–681.
- Skala W 1977 A mathematical model to investigative distortions of correlation coefficients in closed arrays; *Math. Geol.* **9** 519–528.
- Skala W 1979 Some aspects of the constant-sum problem in geochemistry; *Chem. Geol.* **27** 1–9.
- Slater L, Jull M, McKenzie D and Gronvöld K 1998 Deglaciation effects on mantle melting under Iceland: results from the northern volcanic zone; *Earth Planet. Sci. Lett.* **164** 151–164.
- Smellie J L 1983 A geochemical overview of subduction-related igneous activity in the South Shetland islands,

- Lesser Antarctica; In: *Antarc. Earth Sci.* (eds) Oliver R L, James P R and Jago J B (Australian Academy of Sciences and Cambridge University Press) 352–356.
- Smith E I, Sánchez A, Walker J D and Wang K 1999 Geochemistry of mafic magmas in the Hurricane Volcanic Field, Utah: implications of small- and large-scale chemical variability of the lithospheric mantle; *J. Geol.* **107** 433–448.
- Smith I E M, Stewart R B and Price R C 2003 The petrology of a large intra-oceanic silicic eruption: the Sandy Bay tephra, Kermadec arc, southwest Pacific; *J. Volcanol. Geotherm. Res.* **124** 173–194.
- Smith T E, Thirlwall M F and MacPherson C 1996 Trace element and isotope geochemistry of the volcanic rocks of Bequia, Grenadine Islands, Lesser Antilles Arc: a study of subduction enrichment and intra-crustal contamination; *J. Petrol.* **37** 117–143.
- Srivastava R K, Hall R P, Verma R and Singh R K 1996 Contrasting Precambrian mafic dykes of the Bastar Craton, Central India: petrological and geochemical characteristics; *J. Geol. Soc. India* **48** 537–546.
- Srivastava R K, Chandra R and Shastry A 2004a High-Ti type N-MORB parentage of basalts from the south Andaman ophiolite suite, India; *Proc. Indian Acad. Sci. (Earth Planet. Sci.)* **113** 605–618.
- Srivastava R K, Singh R K and Verma S P 2004b Neoproterozoic mafic volcanic rocks from the southern Bastar greenstone belt, Central India: petrological and tectonic significance; *Precamb. Res.* **131** 305–322.
- Srivastava R K and Singh R K 2003 Geochemistry of high-Mg mafic dykes from the Bastar craton: evidence of late Archean boninite-like rocks in an intracratonic setting; *Curr. Sci.* **85** 808–812.
- Srivastava R K and Singh R K 2004 Trace element geochemistry and genesis of Precambrian sub-alkaline mafic dikes from the central Indian craton: evidence for mantle metasomatism; *J. Asian Earth Sci.* **23** 373–389.
- Srivastava R K and Sinha A K 2004 Geochemistry and petrogenesis of early Cretaceous sub-alkaline mafic dykes from Swangkre-Rongmil, East Garo Hills, Shillong plateau, northeast India; *Proc. Indian Acad. Sci. (Earth Planet. Sci.)* **113** 683–697.
- Stephenson D and Marshall T R 1984 The petrology and mineralogy of Mt. Popa volcano and the nature of the late-Cenozoic Burma volcanic arc; *J. Geol. Soc. London* **141** 747–762.
- Stolz A J, Varne R, Wheller G E, Foden J D and Abbott M J 1988 The geochemistry and petrogenesis of K-rich alkaline volcanics from the Batu Tara volcano, eastern Sunda arc; *Contrib. Mineral. Petrol.* **98** 374–389.
- Stolz A J, Varne R, Davies G R, Wheller G E and Foden J D 1990 Magma source components in an arc-continent collision zone: the Flores-Lembata sector, Sunda arc, Indonesia; *Contrib. Mineral. Petrol.* **105** 585–601.
- Storey M, Rogers G, Saunders A D and Terrell D J 1989 San Quintín volcanic field, Baja California, Mexico: 'within plate' magmatism following ridge subduction; *Terra Nova* **1** 195–202.
- Tamura Y 1994 Genesis of island arc magmas by mantle derived bimodal magmatism: evidence from the Shiraham group, Japan; *J. Petrol.* **35** 619–645.
- Tatsumi Y, Murasaki M, Arsadi E M and Nohda S 1991 Geochemistry of Quaternary lavas from NE Sulawesi: transfer of subduction components into the mantle wedge; *Contrib. Mineral. Petrol.* **107** 137–149.
- Tatsumi Y, Murasaki M and Nohda S 1992 Across-arc variation of lava chemistry in the Izu-Bonin arc: identification of subduction components; *J. Volcanol. Geotherm. Res.* **49** 179–190.
- Taylor R N and Nesbitt R W 1998 Isotopic characteristics of subduction fluids in an intra-oceanic setting, Izu-Bonin Arc, Japan; *Earth Planet. Sci. Lett.* **164** 79–98.
- Thirlwall M F and Graham A M 1984 Evolution of high-Ca, high-Sr C-series basalts from Grenada, Lesser Antilles: the effects of intra-crustal contamination; *J. Geol. Soc. London* **141** 427–445.
- Thirlwall M F, Graham A M, Arculus R J, Harmon R S and Macpherson C G 1997 Resolution of the effects of crustal assimilation, sediment subduction, and fluid transport in island arc magmas: Pb-Sr-Nd-O isotope geochemistry of Grenada, Lesser Antilles; *Geochim. Cosmochim. Acta* **60** 4785–4810.
- Thorpe R S 1977 Tectonic significance of alkaline volcanism in eastern Mexico; *Tectonophysics* **40** 19–26.
- Togashi S, Tanaka T, Yoshida T, Ishikawa K-I, Fujinawa A and Kurasawa H 1992 Trace elements and Nd-Sr isotopes of island arc tholeiites from frontal arc of northeast Japan; *Geochem. J.* **26** 261–277.
- Torney D R, Hickey-Vargas R, Frey F A and López-Escobar L 1991 Recent lavas from Andean volcanic front (33 to 42°S): Interpretations of along-arc compositional variations; In: *Andean magmatism and its tectonic setting* (eds) Harmon R S and Rapela C W, Geological Society of America Special Paper **265** 57–77.
- Treviño-Cázarez A, Ramírez-Fernández J A, Velasco-Tapia F, Rodríguez-Saavedra P 2005 Mantle xenoliths and their host magmas in the Eastern Alkaline Province, northeast Mexico; *Int. Geol. Rev.* **47** 1260–1286.
- Trua T, Deniel C and Mazzuoli R 1999 Crustal control in the genesis of Plio-Quaternary bimodal magmatism of the Main Ethiopian Rift (MER): geochemical and isotopic (Sr, Nd, Pb) evidence; *Chem. Geol.* **155** 201–231.
- Turner S and Foden J 2001 U, Th and Ra disequilibrium, Sr, Nd and Pb isotope and trace element variations in Sunda arc lavas: predominance of a subducted sediment component; *Contrib. Mineral. Petrol.* **142** 43–57.
- Turner S, Foden J, George R, Evans P, Varne R, Elburg M and Jenner G 2003 Rates and processes of potassic magma evolution beneath Sangeang Api volcano, East Sunda arc, Indonesia; *J. Petrol.* **44** 491–515.
- Velasco-Tapia F and Verma S P 2001 First partial melting inversion model for a rift-related origin of the Sierra de Chichinautzin volcanic field, central Mexican Volcanic Belt; *Int. Geol. Rev.* **43** 788–817.
- Verma S P 1983 Magma genesis and chamber processes at Los Humeros caldera, Mexico – Nd and Sr isotope data; *Nature* **301** 52–55.
- Verma S P 2000a Geochemistry of the subducting Cocos plate and the origin of subduction – unrelated mafic volcanism at the volcanic front of the central Mexican Volcanic Belt; In: *Cenozoic tectonics and volcanism of Mexico* (eds) Delgado-Granados H, Aguirre-Díaz G and Stock J M, Geological Society of America Special Paper **334** 195–222.
- Verma S P 2000b Error propagation in equations for geochemical modelling of radiogenic isotopes in two-component mixing; *Proc. Indian Acad. Sci. (Earth Planet. Sci.)* **109** 79–88.
- Verma S P 2000c Geochemical evidence for a lithospheric source for magmas from Los Humeros caldera, Puebla, Mexico; *Chem. Geol.* **164** 35–60.
- Verma S P 2001 Geochemical evidence for a lithospheric source for magmas from Acoculco caldera, eastern Mexican Volcanic Belt; *Int. Geol. Rev.* **43** 31–51.
- Verma S P 2002 Absence of Cocos plate subduction-related basic volcanism in southern Mexico: a unique case on Earth?; *Geology* **30** 1095–1098.

- Verma S P 2004 Solely extension-related origin of the eastern to west-central Mexican Volcanic Belt (Mexico) from partial melting inversion model; *Curr. Sci.* **86** 713–719.
- Verma S P 2005 Estadística básica para el manejo de datos experimentales: aplicación en la Geoquímica (Geoquimiometría); México, D.F., UNAM, 186 p.
- Verma S P 2006 Extension related origin of magmas from a garnet-bearing source in the Los Tuxtlas volcanic field, Mexico; *Int. J. Earth Sci.* (in press).
- Verma S P and Schilling J-G 1982 Galapagos hot spot – spreading center system. 2. $^{87}\text{Sr}/^{86}\text{Sr}$ and large lithophile element variations (85°W – 101°W); *J. Geophys. Res.* **87** 10,838–10,856.
- Verma S P and Santoyo E 1997 New improved equations for Na/K, Na/Li and SiO_2 geothermometers by outlier detection and rejection; *J. Volcanol. Geotherm. Res.* **79** 9–23.
- Verma S P, Salazar-V A, Negendank J F W, Milán M, Navarro-L I and Besch T 1993 Características petrográficas y geoquímicas de elementos mayores del campo volcánico de Los Tuxtlas, Veracruz, México; *Geofís. Int.* **32** 237–248.
- Verma S P, Torres-Alvarado I S and Sotelo-Rodríguez Z T 2002 SINCLAS: standard igneous norm and volcanic rock classification system; *Comput. Geosci.* **28** 711–715.
- Verma S P, Torres-Alvarado I S and Velasco-Tapia F 2003 A revised CIPW norm; *Schweiz. Miner. Petrog. Mitteil.* **83** 197–216.
- Verma S P, Andaverde J and Santoyo E 2006 Statistical evaluation of methods for the calculation of static formation temperatures in geothermal and oil wells using an extension of the error propagation theory; *J. Geochem. Explor.* **89** 398–404.
- Vermeesch P 2006 Tectonic discrimination of basalts with classification trees; *Geochim. Cosmochim. Acta* **70** 1839–1848.
- Verwoerd W J, Erlank A J and Kable E J D 1976 *Geology and geochemistry of Bouvet island*; Proceedings of the Symposium on “Andean and Antarctic Volcanology Problems”, Santiago, Chile 201–237.
- Walker J A, Carr M J, Feigenson M D and Kalamarides R I 1990 The petrogenetic significance of interstratified high- and low-Ti basalts in central Nicaragua; *J. Petrol.* **31** 1141–1164.
- Walker J A, Patino L C, Carr M J and Feigenson M D 2001 Slab control over HFSE depletions in central Nicaragua; *Earth Planet. Sci. Lett.* **192** 533–543.
- West H B, Garcia M O, Gerlach D C and Romero J 1992 Geochemistry of tholeiites from Lanai, Hawaii; *Contrib. Mineral. Petrol.* **112** 520–542.
- Wheller G E, Varne R, Foden J D and Abbott M J 1987 Geochemistry of Quaternary volcanism in the Sunda-Banda arc, Indonesia, and three-component genesis of island-arc basaltic magmas; *J. Volcanol. Geotherm. Res.* **32** 137–160.
- White W M, McBirney A R and Duncan R A 1993 Petrology and geochemistry of the Galápagos Islands: portrait of a pathological mantle plume; *J. Geophys. Res.* **98** 19,533–19,563.
- Whitford D J, Nicholls I A and Taylor S R 1979 Spatial variations in the geochemistry of Quaternary lavas across the Sunda arc in Java and Bali; *Contrib. Mineral. Petrol.* **70** 341–356.
- Woodhead J D 1988 The origin of geochemical variations in Mariana lavas: a general model for petrogenesis in intra-oceanic island arcs; *J. Petrol.* **29** 805–830.
- Woodhead J D and Johnson R W 1993 Isotopic and trace-element profiles across the New Britain island arc, Papua New Guinea; *Contrib. Mineral. Petrol.* **113** 479–491.
- Woronow A and Love K M 1990 Quantifying and testing differences among means of compositional data; *Math. Geol.* **22** 837–852.
- Yellur D D and Nair R S 1978 Assigning a magmatically defined tectonic environment to Chitradurga metabasalts, India, by geochemical methods; *Precamb. Res.* **7** 259–281.
- Zellmer G F, Hawkesworth C J, Sparks R S J, Thomas L E, Harford C L, Brewer T S and Loughlin S C 2003 Geochemical evolution of the Soufrière Hills volcano, Montserrat, Lesser Antilles volcanic arc; *J. Petrol.* **44** 1349–1374.
- Zhang M, Suddaby P, Thompson R N, Thirlwall M F and Menzies M A 1995 Potassic volcanic rocks in NE China: geochemical constraints on mantle source and magma genesis; *J. Petrol.* **36** 1275–1303.
- Zhi X, Song Y, Frey F A, Feng J and Zhai M 1990 Geochemistry of Hannuoba basalts, eastern China: constraints on the origin of continental alkalic and tholeiitic basalt; *Chem. Geol.* **88** 1–33.
- Zhuravlev D Z, Tsvetkov A A, Zhuravlev A Z, Gladkov N G and Chernysheva I V 1987 $^{143}\text{Nd}/^{144}\text{Nd}$ and $^{87}\text{Sr}/^{86}\text{Sr}$ ratios in recent magmatic rocks of the Kurile Island Arc; *Chem. Geol.* **66** 227–243.
- Zou H, Zindler A, Xisheng X and Qi Q 2000 Major, trace element, and Nd, Sr and Pb isotope studies of Cenozoic basalts in SE China: mantle sources, regional variations and tectonic significance; *Chem. Geol.* **171** 33–47.