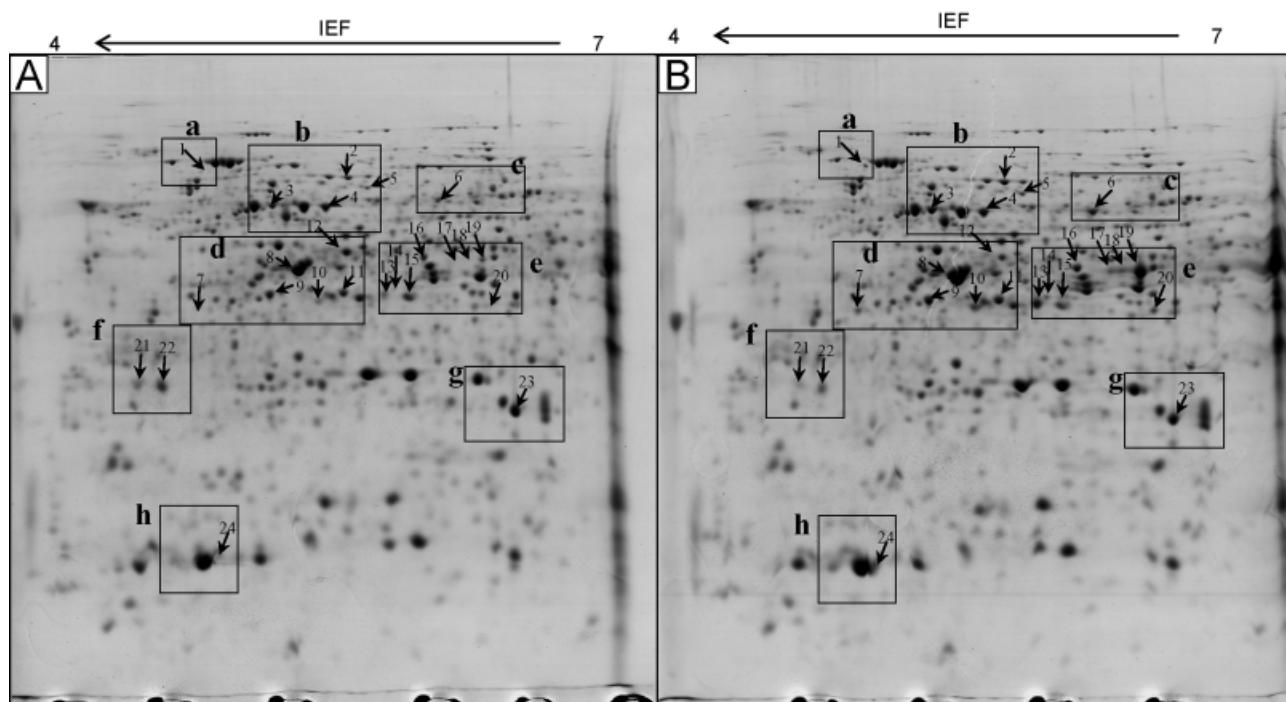


# Proteome analysis of soybean roots under waterlogging stress at an early vegetative stage

IFTEKHAR ALAM, DONG-GI LEE, KYUNG-HEE KIM, CHOONG-HOON PARK, SHAMIMA AKHTAR SHARMIN, HYOSHIN LEE, KI-WON OH, BYUNG-WOOK YUN and BYUNG-HYUN LEE

*J. Biosci.* 35(1), March 2010, 49–62 © Indian Academy of Sciences

## Supplementary figure



**Supplementary figure.** 2-DE analysis of soybean root proteins under waterlogging stress. A total of 350  $\mu$ g protein was separated by 2-D as described in Materials and Methods, and visualized with Coomassie brilliant blue (CBB) staining. (A) and (B) represent the 2-DE patterns of control and 3-day waterlogging-treated roots, respectively. The boxes (a–h) are enlarged in figure 3. Arrows indicate differentially expressed identified proteins in response to waterlogging stress.