

Description of two new species of jumping-spider of the genus
Rhene (Family : Salticidae) from India

B. K. TIKADER

Zoological Survey of India, Western Regional Station, Poona 411005

MS received 15 November 1976

ABSTRACT

Two new species of spiders, viz., *Rhene khandalaensis* and *Rhene decoratus* described in this paper, were collected from Khandala, Dist. Poona, Maharashtra. This genus is being reported for the second time from India.

1. INTRODUCTION

THE spiders of the family Salticidae (jumping-spider) play an important role in the biological control of insect pest in nature. But unfortunately there was no work on systematics of this interesting group of spider in our country. Only Tikader¹⁻⁵ has published a few papers on this group of spider.

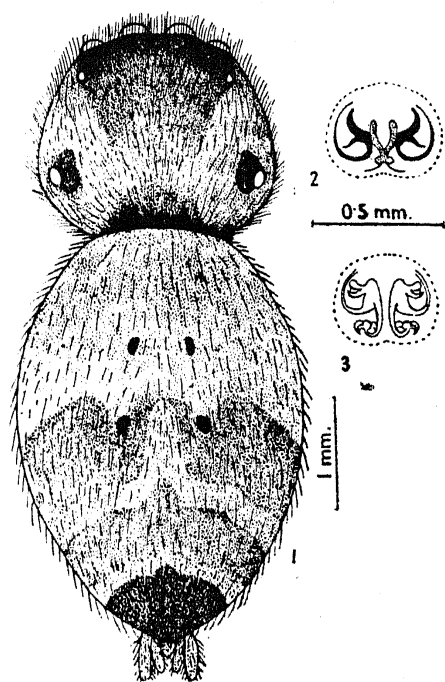
While studying the jumping-spiders in the collection of Zoological Survey of India, Poona, several new species of spiders of the family Salticidae have been noticed some of which are described elsewhere. In the present paper two new species of spider of the genus *Rhene* Thorell are described.

All type specimens will be deposited in due course in the National Collection, Zoological Survey of India, Calcutta.

1. *Rhene khandalaensis* sp. nov. (figures 1-3)

GENERAL : Cephalothorax and legs deep brown, abdomen light brown. Total length 5.20 mm. Carapace 1.80 mm long, 2.10 mm wide, abdomen 3.70 mm long, 2.50 mm wide.

CEPHALOTHORAX : Wider than long, clothed with thick mouse-hairs. Anterior and posterior end slightly narrower than middle. Eyes black but anterior eyes pearly white. Anterior row strongly recurved. Anterior lateral eyes and posterior eyes nearly same size; second pair of eyes small



Figures, 1-3. *Rhene khandalaensis* sp. nov. 1. Dorsal view of female, legs omitted. 2. Epigyne. 3. Internal genitalia.

and situated more nearer to the anterior lateral than to the posterior eyes. Base of eyes encircled with a black patch. Posterior eyes situated far behind the anterior group of eyes. Sternum nearly oval, narrowing in front, clothed with fine hairs. First pair of legs conspicuously stout and dorsal side of femur bulging prominently. Tibiae and metatarsi I provided with two pairs of ventral spines.

ABDOMEN : Short, longer than wide, narrowing behind, clothed with fine hairs. Dorsum provided with two pairs of sigilla and posterior half provided with three light brown transverse bands and posterior most band more darker. Ventral side uniform light colour and middle provided with a longitudinal broad light brown band extending from epigastric fold to near the base of spinnerets. Epigyne and internal genitalia as in figures 2, 3.

Holotype ♀, *Paratype* 4 ♀♀ in spirit, INDIA: MAHARASHTRA: Dist. Poona, Khandala, Santonish Lodge, Coll. B. K. Tikader, 9. xi. 1963.

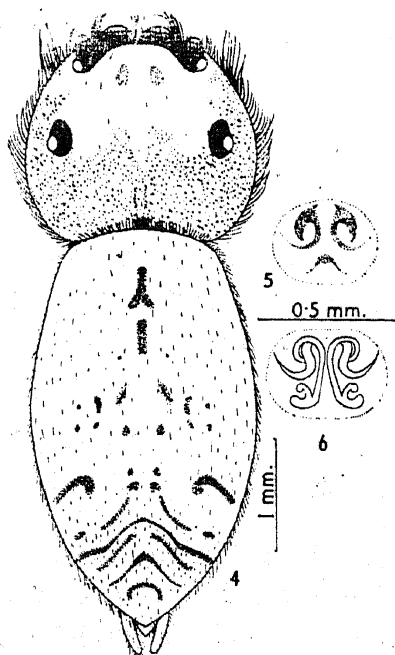
This species resembles *Rhene indicus* Tikader but it is separated as follows : (i) Abdomen posterior half provided with three transverse brown bands but in *R. indicus* posterior half of abdomen provided with two transverse brown bands. (ii) Epigyne and internal genitalia also structurally different.

2. *Rhene decoratus* sp. nov. (figures 4-6)

GENERAL : Cephalothorax, legs and abdomen pale greenish. Total length 5.20 mm. Carapace 1.80 mm long, 2.00 mm wide, abdomen 3.50 mm long, 2.00 mm wide.

CEPHALOTHORAX : Wider than long, clothed with fine and some thick hairs. Anterior and posterior end slightly narrower than middle. Eyes black but anterior eyes milk-white. Anterior row slightly recurved and short. Anterior lateral eyes and posterior eyes nearly same size; second pair of eyes small, and situated very near to the anterior lateral eyes. Base of eyes encircled with a conspicuous black patch. Posterior eyes situated far behind the anterior group of eyes. Cephalothorax provided with two pairs of inconspicuous light brown patches. Legs short and robust, clothed with fine hairs, I pair of legs conspicuously stout and dorsal side of femur bulging prominently. Tibiae and metatarsi I and II provided with two pairs of ventral spines.

ABDOMEN : Long, narrowing behind, clothed with fine hairs. Middle of abdomen provided with two pairs sigilla and posterior half provided with some deep brown dots and transverse bars as in figure 4. Ventral side uniform pale, provided with irregular chalk-white patches. Epigyne and internal genitalia as in figures 5, 6.



Figures 4-6. *Rhene decoratus* sp. nov. 4. Dorsal view of female, legs omitted. 5. Epigyne, 6. Internal genitalia.

Holotype ♀, *Paratype* ♀ in spirit, INDIA : MAHARASHTRA : Dist. Poona, Karla Govt. Rest House, Coll. B. K. Tikader 4. xi. 1963.

This species resembles *Rhene khandalaensis* sp. nov. but it is easily separated as follows : (i) Structure and colour pattern of cephalothorax and abdomen different. (ii) Epigyne and internal genitalia also structurally different.

REFERENCES

1. Tikader, B. K., *Sci. Cult.*, Calcutta, **31** 262 (1965).
2. Tikader, B. K., *Proc. Indian Acad. Sci.* **B66** 117 (1967).
3. Tikader, B. K., *Proc. Indian Acad. Sci.*, **B78** 68 (1973).
4. Tikader, B. K., *Proc. Indian Acad. Sci.* **B79** 120 (1974).
5. Tikader, B. K., *Proc. Indian Acad. Sci.*, **B79** 204 (1974)