

paired with any one of the other six strains. It appears that the sexual strains of the fungus have become definitely isolated in different areas, and this localisation of the two sex strains may explain the absence of oospore formation in nature. The case reported by Narasimhan¹ when Coleman once obtained oospores in areca nuts placed in Roux tubes and inoculated with a culture of *P. arecæ*, can now be satisfactorily explained by assuming that the nuts were carrying natural infection with one of the strains occurring on areca nut trees and that the culture used for inoculation must have been of the opposite sex.

B. N. UPPAL.
M. K. DESAI.

College of Agriculture,
Poona,
February 21, 1939.

¹ Narasimhan, M. J., *Phytopath.*, 1930, 20, 201-14.

A Re-description of *Lemdana marthæ* Seurat, 1917

Lemdana marthæ, the only species of its genus was described by Seurat in 1917. This nematode has so far not been recorded from India. The figures given by Seurat do not show the specific characters. The description

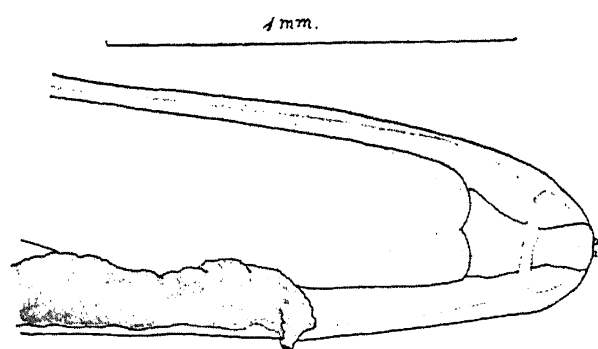


FIG. 1

Lemdana marthæ. Anterior end of female, lateral view showing the vulva

also is hazy, hence it is considered to re-describe this nematode.

Five females and two males of *Lemdana marthæ* were found under the epithelium in the neck region of a Spotted Babbler—*Pellorneum ruficeps*.

The females measure 32.9 mm. × 0.63 mm. to 45.3 mm. × 0.7 mm. The mouth is simple

without lips. There is a pair of head-papillæ and a pair of amphids present. The nerve-ring is found just behind the anterior end.

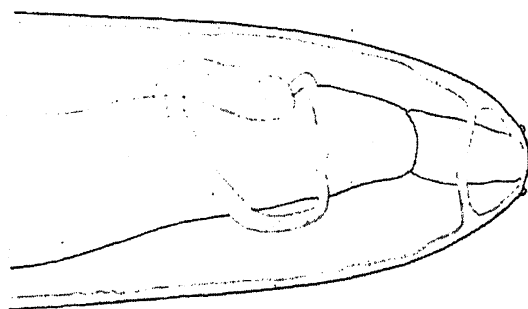


FIG. 2

Lemdana marthæ. Anterior end of male, dorsal view showing the head-papillæ and amphids

Cuticle is thick and smooth. The œsophagus is divided into two parts—an anterior short clear muscular portion measuring 0.36 mm., and a large dark glandular portion measuring

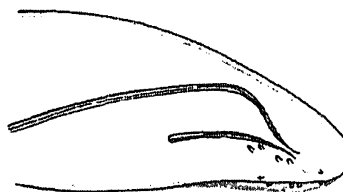


FIG. 3

Lemdana marthæ. Posterior end of male showing the position of papillæ

9.22 mm. in a female 32.9 mm. long. The vulva is very prominent and lies at a distance of 0.74 mm. from the anterior end. The anus lies near the conical posterior end and bears three subventral papillæ.

The males measure 18.9 mm. × 0.46 mm. Caudal alæ are absent. There are four pairs of pre-anal and a single pair of post-anal papillæ. The spicules are very unequal. The right spicule measures 0.32 mm. and the left spicule is 2.15 mm. in length.

The microfilaræ are unsheathed and found in the blood.

Host—*Pellorneum ruficeps*.

Location—Neck region.

Distribution—Aligarh, U.P., India.

M. B. MIRZA.

Department of Zoology,
Muslim University, Aligarh, U.P.,

March 7, 1939.

¹ Sprehn, *Lehrbuch der Helminthology*, Berlin, 1932.

² York and Maplestone, *The Nematode Parasites of Vertebrates*, London, 1926.