

The authors wish to thank Dr. K. Neelakantam for his kind interest in this work.

C. KARUNAKARAN.  
M. NARASINGARAO.

Departments of Geology  
and Chemical Technology,  
Andhra University,  
Waltair,  
September 26, 1946.

1. Venkateswarlu, D., *J. Ind. Chem. Soc.*, (Ind. and News Ed.), 1944, Pp. 96-98.
2. Bureau of Mines, *U.S.A.*, *Report of investigation*, April 1934, No. 3225.
3. Groves, *Silicate Analysis*, 1937, p. 106.

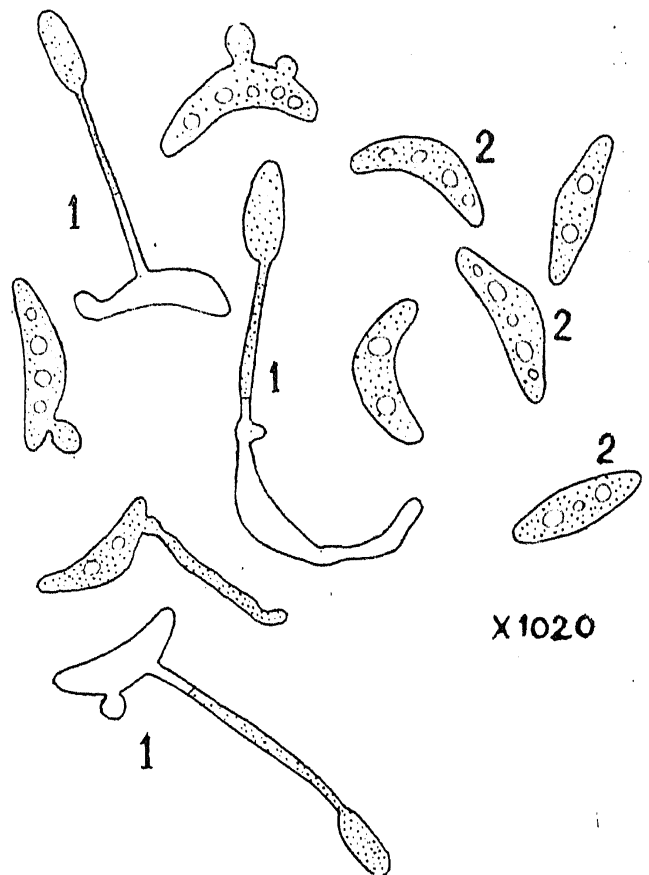
### MILK OF HE-GOAT

RECENTLY I have come across an instance of a he-goat giving milk from both the teats since last November. The maximum amount secreted was 6-7 oz., but this has considerably decreased and the output to-date is only  $\frac{3}{4}$  oz. The goat behaves quite normally in other respects and is used for stud.

Two samples of this milk were collected and analysed. The average of these two determinations were: Fat (Gerber) 4.6 per cent.; Total solids (gravimetric) 14.4 per cent.; Solids-not-fat 9.8 per cent. This milk seems to be normal compared to the average figures reported for the milk of she-goat.

Chemistry Department,  
M.T.B. College,  
Surat,  
August 15, 1946.

C. M. DESAI.



1. Germinating conidia with the germ tube and the secondary conidia at the tip.  
2. Conidia.

### A NOTE ON THE OCCURRENCE OF SPHACELIA ON CENCHRUS CELIARIS

OCCURRENCE of the genus *Claviceps* in India has been recorded by various workers on different hosts. McRae (1917) described *S. sorghi* on sorghum in Madras Province. Ajrekar (1926) has recorded the same fungus and also *Sphacelia* on *Dichanthum nodosum*, *Dichanthium annulatum*, *Pennisetum Hohenackeri* and *Ischaemum pilosum* in Bombay Province. Ramakrishnan (1937) has recorded *Sphacelia* on *Panicum ramosum* from Coimbatore. Thirumalachar (1943) has observed a *Claviceps* on sugarcane in Mysore and *Sphacelia* on *Digitaria longifolia*, *Symbopogon caesium* and *Heteropogon contortus* in 1945. Thomas and others (1945) have published a list of grasses on which occurrence of *Sphacelia* has been observed by them. This list comprises twenty-one grasses of common occurrence in South India.

At Coimbatore a *Sphacelia* has been observed by the writer, to occur on *Cenchrus ciliaris*, a common fodder grass of South India. The grass has not been included in the list of hosts of the fungus so far published. The description of the fungus is given below:

Conidia are formed in light yellowish drops of viscous 'honey dew', which later on dry up into a yellow gummy mass. Conidia are hyaline, falcate or sickle-shaped with more or less pointed ends, one-celled with 2 to 6 conspicuous vacuoles and measuring  $18.37 \times 5.96 \mu$ , the



*Sphacelia* on *Cenchrus ciliaris*  
Left-Single Flower. Right Affected panicle