

Secondary metabolites of *Chrysanthemum* genus and their biological activities

Ajai Kumar, S. P. Singh and R. S. Bhakuni*

Central Institute of Medicinal and Aromatic Plants, Lucknow 226 015, India

***Chrysanthemum* genus synthesizes and accumulates a variety of secondary metabolites. Some of the biologically active secondary metabolites and pyrethroids are responsible for the insecticidal activity of the well known plant species *Chrysanthemum cinerariaefolium*. The present review summarizes information available on the secondary metabolites isolated from *Chrysanthemum* genus.**

Keywords: Biological activity, chemical composition, *Chrysanthemum*, pyrethroids, secondary metabolites.

CHRYSANTHEMUM is a cosmopolitan genus, comprising about 300 species of herbs and undershrubs, among which a few yield the commercial insecticide known as Pyrethrum. Several species of *Chrysanthemum* are ornamental and grown in gardens for their large, showy, multicoloured flowers¹. Pyrethrum (*Chrysanthemum cinerariaefolium*) has been under cultivation around the world for nearly 150 years, with Kenya accounting for about 83% of the present world production². In India, it is cultivated on a large scale only in Kashmir, though successful trials of cultivation have been reported at Kullu, Palampur, Mayurbhanj, Kumaun, Assam, Karnataka, Kerala and Kodaikanal¹. Its flowers yield an important insecticide, i.e. the pyrethrins. The pyrethrin content, being a quantitative character, always poses a problem before the breeders while selecting desired genotypes having high pyrethrin content³. The present review deals with compilation of chemical composition and biological activities reported in various *Chrysanthemum* species up to 2004.

Chemical constituents

Search for the concerned active compounds has led to the isolation of several pyrethroids, sesquiterpenoids, flavonoids, coumarins, triterpenoids, steroids, phenolics, purines, lipids, aliphatic compounds and monoterpenoids from different plant parts of *Chrysanthemum*.

The phytochemicals⁴⁻²⁹ isolated from different parts of the plants and their percentages are listed in Tables 1 and 2.

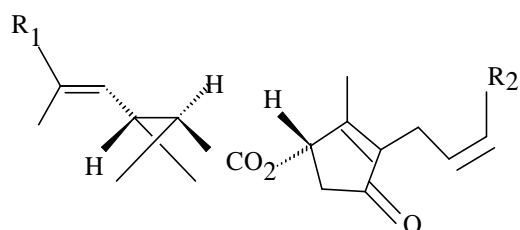
Monoterpenoids

The essential oil constituents (monoterpenoids) reported from various *Chrysanthemum* species are listed^{4-9,29} in Table 2.

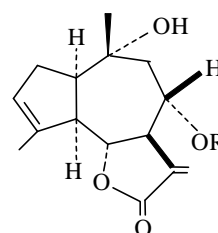
Twelve compounds were identified in the *C. cinerariaefolium* oil by GC and GC-MS. The major compounds of the oil were trans-**b**-farnesene (41.36%), **b**-cubebene (17.27%) and **d**-nerolidol (14.23%)⁸.

Pyrethroids

Pyrethrum extract is one of the most important natural insecticides extracted from Pyrethrum plants. The biologically active constituents of Pyrethrum extract are the pyrethrins, also known as 'rethrins'. Pyrethrins are esters formed by a combination of two acids, chrysanthemic acid and pyrethric



1. R₁ = CH₃, R₂ = CH₃
2. R₁ = CO₂ CH₃, R₂ = CH₃
3. R₁ = CH₃, R₂ = C₂H₅
4. R₁ = CO₂ CH₃, R₂ = C₂H₅
5. R₁ = CH₃, R₂ = -CH = CH₂
6. R₁ = CO₂ CH₃, R₂ = -CH = CH₂



7. R = CO.C (Me) = CH.Me (Angeloyl)
17. R = Ac
19. R = H

*For correspondence. (e-mail: rs.bhakuni@cimap.res.in)

Table 1. Compounds isolated from *Chrysanthemum* plants

Compound	Plant part	Plant species	Percentage	Reference
Pyrethroids				
Cinerin I (1)	FL	<i>Chrysanthemum cinerariaefolium</i>	5.053	10
Cinerin II (2)	„	„	5.331	10
Jasmolin I (3)	„	„	2.487	10
Jasmolin II (4)	„	„	2.408	10
Pyrethrin I (5)	„	„	19.906	10
Pyrethrin II (6)	„	„	15.286	10
Sesquiterpene lactones				
Angeloylcumambrin-B (7)	EP	<i>C. oranatum</i>	0.01	11
	AP	<i>C. indicum</i>	0.0055	14
Angeloylajadin (8)	AP	<i>C. indicum</i>	0.0059	14
Arteglastrin-A (9)	AP	„	0.0008	14
Caryolane-1,9- <i>b</i> -diol (10)	FL	„	–	16
Chrysanthediol-A (11)	FL	<i>C. morifolium</i>	0.00046	15
Chrysanthediacetate-B (12)	FL	„	0.0003	15
Chrysanthediacetate-C (13)	FL	„	0.0004	15
Chrysanolide (14)	„	<i>C. cinerariaefolium</i>	0.0015	18
Chrysanin (15)	„	„	0.0011	18
Clovanediol (16)	„	<i>C. indicum</i>	–	16
Cumambrin-A (17)	EP	<i>C. oranatum</i>	0.05	11
	FLH	<i>C. coronarium</i>	–	13
Dihydrocumambrin-A (18)	FLH	<i>C. coronarium</i>	–	13
Cumambrin-B (19)	EP	<i>C. oranatum</i>	0.0075	11
Delobanone (20)	SFF	<i>C. indicum</i>	–	24
<i>b</i> -Dictyoptero (21)	FL	<i>C. morifolium</i>	0.0016	15
Eupatilin (22)	FL	<i>C. indicum</i>	–	16
Handelin (23)	EP	<i>C. oranatum</i>	0.075	11
Indicumenone (24)	SFF	<i>C. indicum</i>	–	24
Kikkanol-A (25)	FL	„	–	16
Kikkanol-B (26)	„	„	–	16
Kikkanol-C (27)	„	„	–	16
Kikkanol-D (28)	„	„	0.00065	16
Kikkanol-D-monoacetate (29)	„	„	0.00032	16
Kikkanol-E (30)	„	„	0.00098	16
Kikkanol-F (31)	„	„	0.00079	16
Kikkanol-F-monoacetate (32)	„	„	0.00148	16
Luteolin (33)	„	„	–	16
Oplopanone (34)	„	„	–	16
Parthenolide	LF	<i>C. parthenium</i>	–	19
Pyrethrosin (35)	FLH	<i>C. cinerariaefolium</i>	–	17
<i>b</i> -Cyclopyrethrosin (36)	FL	<i>C. cinerariaefolium</i>	0.034	18
Dihydro- <i>b</i> -cyclopyrethrosin (37)	FL	<i>C. cinerariaefolium</i>	0.005	18
	FLH	„	0.0092	12
(+)-Sesamin	FL	„	0.01	18
<i>cis</i> -spiroketalenolether polyene (38)	FL	<i>C. indicum</i>	–	16
<i>trans</i> -spiroketalenolether polyene (39)	FL	<i>C. indicum</i>	–	16
Taraxasterol	FL	<i>C. cinerariaefolium</i>	0.205	18
	DFL	„	–	27
Tatridin-A (40)	FLH	„	0.00058	12
Tatridin-B (41)	„	„	0.00058	12
(11 <i>R</i>)-11,13-Dihydro-tatridin-A (42)	„	„	0.00208	12
(11 <i>R</i>)-11,13-Dihydro-tatridin-B (43)	„	„	0.001	12
(11 <i>R</i>)-6- <i>O</i> - <i>b</i> - <i>D</i> -Glucosyl-11,13-dihydro-tatridin-B (44)	„	„	0.0058	12
Sterols				
Campesterol and sitosterol	FL, LF, ST, RT	<i>C. parthenium</i> var. <i>Aureum</i>	64.31-80.36*	20
		var. <i>Schneeball</i>	64.26-80.82*	
Fucosterol	„	„	1.79-8.01*	20
			2.06-8.33*	
Isofucosterol	„	„	0.56-6.12*	20
			1.21-5.24*	

(contd...)

Table 1. (contd...)

Compound	Plant part	Plant species	Percentage	Reference
Stanols	0.77–1.14*	20
			0.53–2.08*	
Stigmasterol	14.99–28.00*	20
			14.73–29.16*	
Flavonoids				
6-Hydroxykaempferol-3,7,4'-trimethylether (tanetin)	LF, FL, SD	<i>C. parthenium</i>	–	20
Acacetin-7-O- <i>b</i> -D-galactopyranoside (45)	YFL	<i>C. indicum</i>	0.006	21
	FLH	<i>C. morifolium</i>	0.0055	22
Acacetin-7-O-(6''-rhamnosyl)- <i>b</i> -D-glucopyranoside (46)	FLH	<i>C. morifolium</i>	0.0015	22
Apigenin (47)	FLH	<i>C. cinerariaefolium</i>	0.0092	
	FLH	<i>C. morifolium</i>	–	
Apigenin-4'-glucuronide (48)	DFL	<i>C. cinerariaefolium</i>	–	27
Apigenin-7-galacturonic acid methyl ester (49)	FLH	<i>C. cinerariaefolium</i>	0.0108	12
Apigenin-7-glucuronic acid (50)	0.0058	12
Apigenin-7-O- <i>b</i> -D-galactopyranoside (51)	FLH	<i>C. morifolium</i>	0.0072	22
2''-glucosyl-8-C-glucosyl-4'-O-methylapigenin (52)	AP	<i>C. viscidhirtum</i>	0.0018	23
Apigetrin	0.0015	23
Baicalin (53)	FLH	<i>C. morifolium</i>	0.0005	22
(+)-Catechin (54)	–	22
Chrysin (55)	–	22
Fisetin (56)	–	22
Flavone (57)	–	22
3-hydroxyflavone (58)	–	22
Flavanone (59)	–	22
7,8-dihydroxyflavanone (60)	–	22
4',5,7-trihydroxyflavanone (61)	–	22
Galangin (62)	–	22
Hesperidin (63)	–	22
Jaceidin (64)	FLH	<i>C. cinerariaefolium</i>	0.0017	12
Luteolin (65)	FLH	<i>C. cinerariaefolium</i>	0.0042	12
	FLH	<i>C. morifolium</i>	0.021	22
	DFL	<i>C. cinerariaefolium</i>	–	27
Luteolin-7-O- <i>b</i> -D-glucopyranoside (66)	FLH	<i>C. morifolium</i>	0.014	22
Morin (67)	–	22
Myricetin (68)	–	22
Quercetin (69)	0.0072	22
Vitexin	AP	<i>C. viscidhirtum</i>	0.0008	23
Miscellaneous fatty acids				
Arachidic	FL	<i>C. cinerariaefolium</i>	0.07, 0.34	26
Behenic	0.37	26
Heneicosanoic	0.04	26
Heptadecanoic	0.12, 0.02	26
Heptacosanoic	0.02	26
Hexacosanoic	0.15	26
Linoleic	6.62	26
Linolenic	2.94	26
Lignoceric	0.36	26
Myristic	0.25	26
Nonadecanoic	0.05, 0.01, 0.03	26
Nonacosanoic	<0.01	26
Oleic	2.09	26
Octacosanoic	0.07	26
Palmitic	0.04, 0.01, 4.64	26
Pentadecanoic	0.02, < 0.01	26
Pentacosanoic	0.05	26
Stearic	0.04, 1.71	26
Tricosanoic	0.07	26
Triacontanoic	0.02	26

(contd...)

Table 1. (contd...)

Compound	Plant part	Plant species	Percentage	Reference
Quinic acid				
3,5-dicaffeoyl-4-succinylquinic acid	LF, ST	<i>C. coronarium</i>	0.023	25
3,5-dicaffeoylquinic acid	„	„	0.0388	25
Polyacetylenic compounds				
1,7(c)-hexadecadien-10,12,14-triyne	FLH	<i>C. leucanthemum</i>	0.034	28
1,8(c)-heptadecadien-11,13,15-triyne	„	„	0.013	28
4(c)-tridecen-7,9,11-triyn-1-ol-	„	„	0.0086	28
1,8(t)-hexadecadien-10,12,14-triyn-(6,7)-oxirane	„	„	0.00014	28
[3(t),5(t)-tridecadien-7,9,11-triyn-1-yl]-3-methyl-2-butenate	„	„	0.00028	28

FL, Flower; EP, Entire plant; AP, Aerial parts; FLH, Flower heads; SFF, Small flower form; LF, Leaves; ST, Stem; RT, Root; SD, Seed; YFL, Yellow flowers; DFL, Dried flowers.

Numbers within brackets indicate structure numbers.

*Range of percentage denotes results of various samples of two varieties of *Chrysanthemum* analysed.

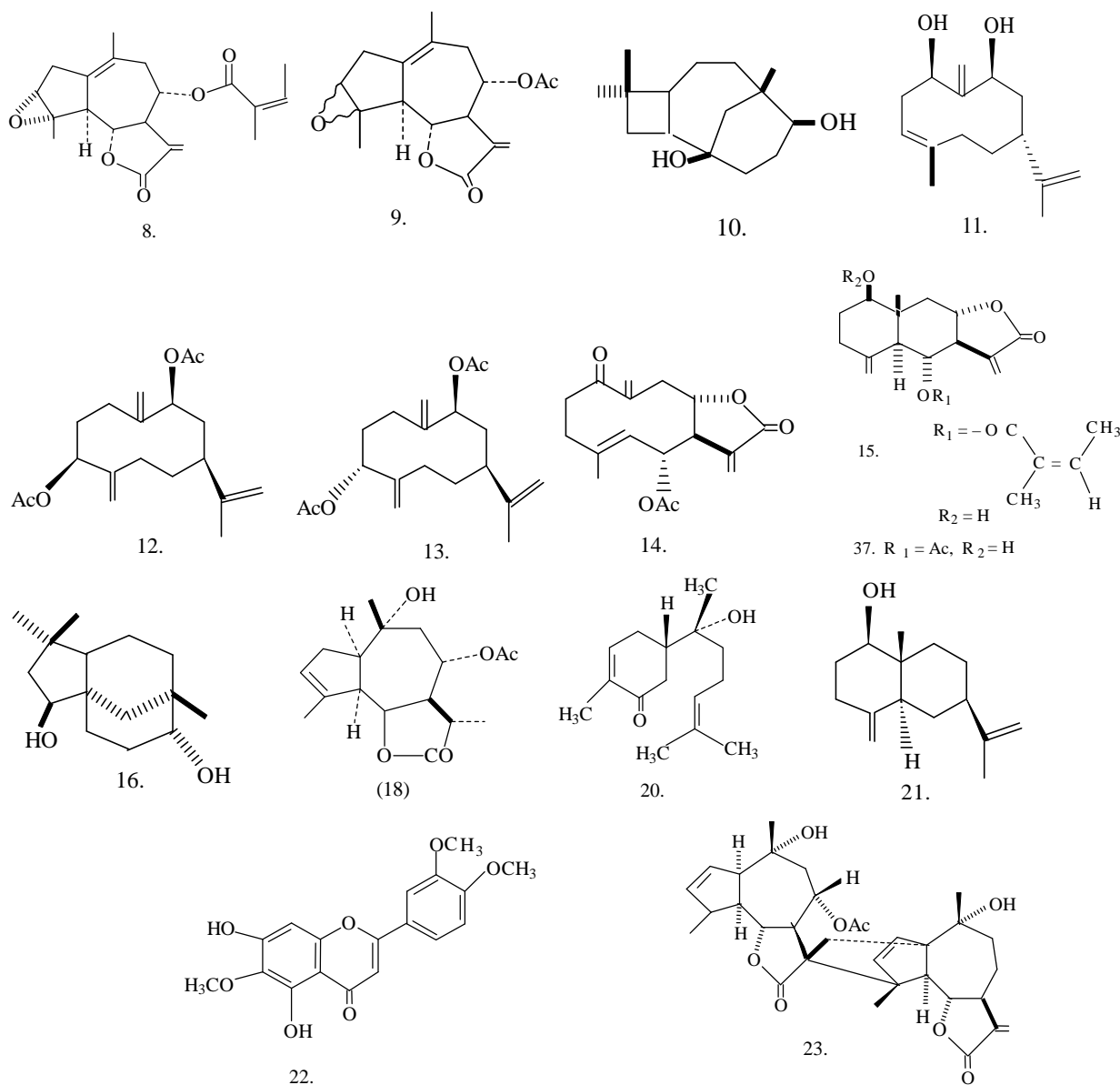


Table 2. Compounds isolated from essential oil of *Chrysanthemum* plants

Compound	Plant	Percentage	Compound type	Reference	
Δ^3 -Carene	<i>Chrysanthemum indicum</i> (DFL, DLF, AP)	0.2, 0.2, 0.8	Monoterpene	6	
	<i>C. viscidhirtum</i>	0.9		9	
(E)- b -Farnesene	<i>Chrysanthemum</i> cultivars*	1.5, 8.7, 5.5	Sesquiterpene	7	
	<i>C. cinerariaefolium</i>	41.36		8	
	<i>C. coronarium</i>	8.4		29	
(Z),(E)- a -Farnesene	<i>Chrysanthemum</i> cultivars*	14.0, 9.0, –	„	7	
(Z)-3-Hexen-1-ol	<i>Chrysanthemum</i> cultivars*	1.0, 2.1, –	Alcohol	7	
(Z)-3-Hexen-1-ol-acetate	<i>Chrysanthemum</i> cultivars*	54.6, 18.9,	Ester	7	
		32.8			
1,8-Cineole	<i>C. japonense</i>	4.8	Monoterpene	4	
	<i>C. indicum</i>	6.0		5	
	<i>C. yoshinaganthum</i>	6.8		5	
	<i>C. cuneifolium</i>	23.0		5	
	<i>C. indicum</i> (DFL, DLF, AP)	–		6	
1-Nonene	<i>Chrysanthemum</i> cultivars*	–, –, 1.6	Alkene	7	
1-Octen-3-ol	<i>C. indicum</i>	–	Alcohol	5	
	<i>C. yoshinaganthum</i>	0.1		5	
	<i>C. cuneifolium</i>	0.3		5	
1-Octen-3-ol-acetate	<i>Chrysanthemum</i> cultivars*	–, 1.1, –	Ester	7	
1-Octene	<i>Chrysanthemum</i> cultivars*	0.3, 0.1, –	Alkene	7	
2-Methyl-6-methylene-1,7-octadien-3-one	<i>Chrysanthemum</i> cultivars*	–, 0.5, –	Ketone	7	
2-Nonanone	<i>Chrysanthemum</i> cultivars*	–, 0.3, –	Ketone	7	
3-cyclohexen-1-ol-acetate	<i>Chrysanthemum</i> cultivars*	–, –, 0.4	Ester	7	
3-Hexenyl-2-methylbutanoate	<i>Chrysanthemum</i> cultivars*	–, 0.2, –	Ester	7	
3-Hexenyl-3-methylbutanoate	<i>Chrysanthemum</i> cultivars*	0.3, 0.6, 0.6	Ester	7	
3-Octanone	<i>Chrysanthemum</i> cultivars*	–, 9.8, –	Ketone	7	
ar-Curcumene	<i>C. indicum</i>	1.0	Sesquiterpene	5	
	<i>C. yoshinaganthum</i>	–		5	
	<i>C. cuneifolium</i>	–		5	
	<i>Chrysanthemum japonense</i>	1.5		4	
Borneol	<i>C. indicum</i>	3.0	Monoterpene	5	
	<i>C. yoshinaganthum</i>	–		5	
	<i>C. cuneifolium</i>	2.5		5	
	<i>Chrysanthemum</i> cultivars*	–, 1.0, –		7	
	<i>Chrysanthemum</i> cultivars*	0.1, 1.6, 0.3		7	
Borneol acetate	<i>C. japonense</i>	4.3	Monoterpene	4	
Bornyl acetate	<i>C. indicum</i>	7.5	Monoterpene	5	
	<i>C. yoshinaganthum</i>	–		5	
	<i>C. cuneifolium</i>	1.1		5	
	<i>C. indicum</i> (DFL, DLF, AP)	6.3, 0.6, 7.8		6	
	<i>C. cinerariaefolium</i>	0.785		Sesquiterpene	8
	<i>C. indicum</i>	3.9		„	5
Calacolene	<i>C. yoshinaganthum</i>	–	„	5	
	<i>C. cuneifolium</i>	–		5	
	<i>C. viscidhirtum</i>	0.3		9	
	<i>C. indicum</i>	0.6		5	
	<i>C. yoshinaganthum</i>	–		5	
Calamenene	<i>C. cuneifolium</i>	–	„	5	
	<i>C. japonense</i>	2.3		Monoterpene	4
	<i>C. indicum</i>	2.0			5
	<i>C. yoshinaganthum</i>	Trace			5
	<i>C. cuneifolium</i>	2.2			5
<i>C. indicum</i> (DFL, DLF, AP)	3.3, 3.6, 8.2	6			
Camphene	<i>Chrysanthemum</i> cultivars*	0.2, 0.3, –	„	7	
	<i>C. japonense</i>	60.0		4	
	<i>C. indicum</i>	0.6		5	
	<i>C. yoshinaganthum</i>	Trace		5	
	<i>C. cuneifolium</i>	14.7		5	
Camphor	<i>Chrysanthemum</i> cultivars*	0.9, 0.8, –	„	7	
	<i>C. indicum</i> (DFL, DLF, AP)	0.7, 0.3, 0.1		6	
Carveol acetate	<i>Chrysanthemum</i> cultivars*	–, trace, –	Monoterpene	7	

Contd...

Table 2. (contd...)

Compound	Plant	Percentage	Compound type	Reference
Carvone	<i>Chrysanthemum</i> cultivars*	–, 0.2, –	„	7
Caryophyllene	<i>C. indicum</i> (DFL, DLF, AP)	0.4, 3.4, 3.7	Sesquiterpene	6
Caryophyllene oxide	<i>C. indicum</i>	3.8	„	5
	<i>C. yoshinaganthum</i>	1.5		5
	<i>C. cuneifolium</i>	2.5		5
	<i>C. viscidhirtum</i>	2.4		9
	<i>C. japonense</i>	2.4	Monoterpene	4
Chrysanthenone	<i>C. indicum</i>	1.6		5
	<i>C. yoshinaganthum</i>	–		5
	<i>C. cuneifolium</i>	–		5
	<i>C. indicum</i> (DFL, DLF, AP)	5.2, 0.5, 5.9		6
	<i>C. viscidhirtum</i>	0.7	Aromatic	9
Cinnamaldehyde	<i>C. japonense</i>	0.8	Monoterpene	4
<i>cis</i> -Chrysanthenyl acetate	<i>C. japonense</i>	0.1	„	4
<i>cis</i> -Carveyl acetate	<i>C. viscidhirtum</i>	0.6	„	9
Citronellyl acetate	<i>C. japonense</i>	6.7	Sesquiterpene	4
	<i>C. indicum</i>	8.5		5
	<i>C. yoshinaganthum</i>	10.6		5
	<i>C. cuneifolium</i>	7.7		5
	<i>C. cinerariaefolium</i>	Trace		8
b -Elemene	<i>Chrysanthemum</i> cultivars*	–, Trace, –	Sesquiterpene	7
	<i>C. japonense</i>	1.0		4
	<i>C. indicum</i>	0.4		5
	<i>C. yoshinaganthum</i>	0.8		5
	<i>C. cuneifolium</i>	0.6		5
	<i>C. viscidhirtum</i>	2.4		9
Estafiatin	<i>C. indicum</i>	–	„	5
	<i>C. yoshinaganthum</i>	0.4		5
	<i>C. cuneifolium</i>	–		5
	<i>C. japonense</i>	0.4	Monoterpene	4
Filifolone	<i>C. viscidhirtum</i>	3.1	„	9
Geraniol	<i>Chrysanthemum</i> cultivars*	1.5, 2.2, 0.4	Ester	7
Hexyl acetate	<i>C. viscidhirtum</i>	0.6	Sesquiterpene	9
Humulene oxide	<i>Chrysanthemum</i> cultivars*	0.2, Trace, –	Ester	7
Isoamyl acetate	<i>C. cinerariaefolium</i>	0.71	Sesquiterpene	8
Isocaryophyllene	<i>C. indicum</i>	–	Monoterpene	5
	<i>C. yoshinaganthum</i>	Trace		5
	<i>C. cuneifolium</i>	–		5
	<i>Chrysanthemum</i> cultivars*	0.7, 3.3, 0.3		7
	<i>C. viscidhirtum</i>	21.8		9
Linalol	<i>C. indicum</i>	0.7	„	5
	<i>C. yoshinaganthum</i>	–		5
	<i>C. cuneifolium</i>	–		5
	<i>C. indicum</i> (DFL, DLF, AP)	1.5, 0.5, 1.2		6
Linalol + thujone	<i>C. viscidhirtum</i>	1.2		9
	<i>C. indicum</i>	1.5	„	5
	<i>C. yoshinaganthum</i>	–		5
	<i>C. cuneifolium</i>	–		5
	<i>C. viscidhirtum</i>	0.6		9
Linalyl acetate	<i>C. indicum</i>	6.0	Monoterpene	5
	<i>C. yoshinaganthum</i>	0.2		5
	<i>C. cuneifolium</i>	2.2		5
	<i>C. viscidhirtum</i>	0.8		9
	<i>C. coronarium</i>	31.9		29
Myrcene	<i>C. indicum</i>	–	„	5
	<i>C. yoshinaganthum</i>	54.8		5
	<i>C. cuneifolium</i>	Trace		5
Myrtenol	<i>C. indicum</i>	–	„	5
	<i>C. yoshinaganthum</i>	0.2		5
	<i>C. cuneifolium</i>	–		5
Myrtenal	<i>C. indicum</i>	–	„	5
	<i>C. yoshinaganthum</i>	0.2		5
Nerolidol	<i>C. cuneifolium</i>	–		5
	<i>C. indicum</i>	2.8	Sesquiterpene	5
	<i>C. yoshinaganthum</i>	–		5

Contd...

Table 2. (contd...)

Compounds	Plants	Percentage (%)	Compounds type	References
	<i>C. cuneifolium</i>	–		5
Nojigiku alcohol	<i>C. japonense</i>	5.4	Monoterpene	4
Octane	<i>Chrysanthemum</i> cultivars*	0.1, –, –	Alkane	7
Octenal	<i>C. viscidhirtum</i>	0.2	„	9
<i>o</i> -Cymene Z	<i>C. viscidhirtum</i>	0.2	Monoterpene	9
<i>p</i> -Cymene	<i>C. japonense</i>	0.4	Monoterpene	4
	<i>C. indicum</i>	0.9		5
	<i>C. yoshinaganthum</i>	Trace		5
	<i>C. cuneifolium</i>	Trace		5
	<i>C. indicum</i> (DFL, DLF, AP)	–		6
	<i>Chrysanthemum</i> cultivars*	1.8, 0.7, 0.1		7
	<i>C. viscidhirtum</i>	0.9		9
Pentacosane	<i>C. indicum</i> (DFL, DLF, AP)	0.4, Trace, 0.2	Alkane	6
Sabinene	<i>Chrysanthemum</i> cultivars*	0.4, 0.3, 2.7	Monoterpene	7
	<i>C. viscidhirtum</i>	3.9		9
Spathulenol	<i>C. cinerariaefolium</i>	7.41	Sesquiterpene	8
	<i>C. viscidhirtum</i>	1.3		9
T-Cadinol	<i>C. viscidhirtum</i>	0.8	Sesquiterpene	9
Terpinen-4-ol	<i>C. indicum</i>	–	Monoterpene	5
	<i>C. yoshinaganthum</i>	0.3		5
	<i>C. cuneifolium</i>	2.1		5
	<i>C. viscidhirtum</i>	1.3		9
Terpinolene	<i>C. indicum</i> (DFL, DLF, AP)	0.3, 0.3, 0.3	Monoterpene	6
	<i>Chrysanthemum</i> cultivars*	0.2, 0.7, 0.1		7
Thymol	<i>C. viscidhirtum</i>	0.3	„	9
T-Muurolol	<i>C. japonense</i>	1.6	Sesquiterpene	4
	<i>C. indicum</i>	5.3		5
	<i>C. yoshinaganthum</i>	–		5
	<i>C. cuneifolium</i>	6.8		5
	<i>C. viscidhirtum</i>	1.4		9
Toluene	<i>Chrysanthemum</i> cultivars*	0.7, Trace, 1.9	Aromatic	7
<i>trans</i> -Chrysanthemumic acid	<i>C. cinerariaefolium</i>	4.53	Monoterpene	8
<i>trans</i> -Carveyl acetate	<i>C. japonense</i>	0.2	„	4
<i>trans</i> -Chrysanthenyl acetate	<i>C. japonense</i>	1.3	„	4
<i>trans</i> -Pinocarveol	<i>C. indicum</i>	Trace	„	5
	<i>C. yoshinaganthum</i>	–		5
	<i>C. cuneifolium</i>	0.3		5
Veleranone	<i>C. indicum</i>	–	Sesquiterpene	5
	<i>C. yoshinaganthum</i>	–		5
	<i>C. cuneifolium</i>	2.1		5
Zingiberene	<i>Chrysanthemum</i> cultivars*	–, –, 4.5	„	7
a -Bisabolene	<i>C. indicum</i> (DFL, DLF, AP)	0.2, –, –	Sesquiterpene	6
a -Cadinol	<i>C. japonense</i>	0.1	Sesquiterpene	4
	<i>C. indicum</i>	4.5		5
	<i>C. yoshinaganthum</i>	–		5
	<i>C. cuneifolium</i>	–		5
	<i>C. viscidhirtum</i>	1.5		9
a -Copaene	<i>C. indicum</i> (DFL, DLF, AP)	–	Sesquiterpene	6
	<i>C. japonense</i>	0.1		4
	<i>C. indicum</i>	0.3		5
	<i>C. yoshinaganthum</i>	Trace		5
	<i>C. cuneifolium</i>	Trace		5
	<i>C. cinerariaefolium</i>	3.04		8
b -Cubebene	<i>C. cinerariaefolium</i>	17.27	„	8
a -Humulene	<i>C. viscidhirtum</i>	0.3	„	9
a -Muurolole	<i>C. indicum</i> (DFL, DLF, AP)	0.7, 4.2, 6.1	„	6
a -Ocimene	<i>Chrysanthemum</i> cultivars*	0.2, 1.3, –	Monoterpene	7
a -Phellandrene	<i>C. indicum</i> (DFL, DLF, AP)	0.1, –, 0.6	„	6
a -Pinene	<i>C. japonense</i>	1.4	„	4
	<i>C. indicum</i> (DFL, DLF, AP)	9.0, 2.3, 11.4		6
	<i>Chrysanthemum</i> cultivars*	0.1, 0.4, 0.4		7
	<i>C. indicum</i>	0.9		5

Contd...

Table 2. (contd...)

Compound	Plant	Percentage	Compound type	Reference
	<i>C. yoshinaganthum</i>	1.0		5
	<i>C. cuneifolium</i>	5.7		5
	<i>C. viscidhirtum</i>	0.5		9
a -Selinene	<i>C. indicum</i>	8.0	Sesquiterpene	5
	<i>C. yoshinaganthum</i>	–		5
	<i>C. cuneifolium</i>	–		5
a -Terpinene	<i>C. indicum</i> (DFL, DLF, AP)	–, 2.7, 5.0	Monoterpene	6
	<i>Chrysanthemum</i> cultivars*	–, 0.3, –		7
a -Terpineol	<i>C. indicum</i>	–	„	5
	<i>C. yoshinaganthum</i>	–		5
	<i>C. cuneifolium</i>	3.0		5
	<i>C. viscidhirtum</i>	0.8		9
a -Thujene	<i>Chrysanthemum</i> cultivars*	0.2, –, 0.3	„	7
a -Thujone	<i>C. indicum</i>	1.5	„	5
	<i>C. yoshinaganthum</i>	–		5
	<i>C. cuneifolium</i>	–		5
b -Cadinene	<i>C. indicum</i> (DFL, DLF, AP)	0.2, 0.7, 0.7	Sesquiterpene	6
b -Caryophyllene	<i>C. japonense</i>	1.2	„	4
	<i>Chrysanthemum</i> cultivars*	2.8, 1.3, 4.0		7
b -Caryophyllene oxide	<i>C. japonense</i>	1.1	„	4
b -Cedrene	<i>C. indicum</i> (DFL, DLF, AP)	–, 1.6, 5.0	Sesquiterpene	6
b -Farnesene	<i>C. indicum</i>	5.0	„	5
	<i>C. yoshinaganthum</i>	1.7		5
	<i>C. cuneifolium</i>	2.6		5
	<i>C. viscidhirtum</i>	25.0		9
b -phenylethylisovalerate	<i>C. cinerariaefolium</i>	3.37	Ester	8
b -Humulene	<i>C. indicum</i>	Trace	Sesquiterpene	5
	<i>C. yoshinaganthum</i>	Trace		5
	<i>C. cuneifolium</i>	0.2		5
b -Myrcene	<i>C. indicum</i> (DFL, DLF, AP)	0.5, 0.3, 3.1	„	6
	<i>Chrysanthemum</i> cultivars*	8.9, 14.4, 2.9	„	7
b -Ocimene	<i>C. indicum</i> (DFL, DLF, AP)	–, –, 1.4	„	6
	<i>Chrysanthemum</i> cultivars*	–, 2.6, –	„	7
b -Pinene	<i>C. japonense</i>	0.6	Monoterpene	4
	<i>C. indicum</i>	0.1		5
	<i>C. yoshinaganthum</i>	0.1		5
	<i>C. cuneifolium</i>	0.3		5
	<i>C. indicum</i> (DFL, DLF, AP)	0.4, 1.3, 4.5		6
	<i>Chrysanthemum</i> cultivars*	–, 0.3, 0.4		7
	<i>C. viscidhirtum</i>	0.6		9
b -Selinene	<i>C. indicum</i> (DFL, DLF, AP)	0.3, 2.4, 4.4	Sesquiterpene	6
b -Sesquiphellandrene	<i>Chrysanthemum</i> cultivars*	3.1, 1.1, –	Sesquiterpene	7
g -Cadinene	<i>C. indicum</i> (DFL, DLF, AP)	0.3, 1.2, 1.4	Sesquiterpene	6
	<i>C. japonense</i>	0.3		4
	<i>C. indicum</i>	5.1		5
	<i>C. yoshinaganthum</i>	–		5
	<i>C. cuneifolium</i>	–		5
g -Muurolene	<i>C. indicum</i> (DFL, DLF, AP)	0.2, –, –	„	6
g -Terpinene	<i>Chrysanthemum</i> cultivars*	2.4, 0.6, 0.3	Monoterpene	7
	<i>C. viscidhirtum</i>	0.5		9
d -Cadinene	<i>C. cinerariaefolium</i>	4.06	Sesquiterpene	8
	<i>C. viscidhirtum</i>	1.8		9
d -Nerolidol	<i>C. cinerariaefolium</i>	14.23	„	8
a -Bisabolol	<i>C. coronarium</i>	16.5	„	29
(E),(E)- a -Farnesene	<i>C. coronarium</i>	11.0	„	29

*Hero, Purple Anne, Surfine.

DFL, Dried flowers; DLF, Dried leaves; AP, Aerial parts.

acid, with three alcohols, cinerolone, jasmolone and pyrethrolone. The three esters of chrysanthemic acid (cinerin I, jasmolin I and pyrethrin I) are commonly known as

Pyrethrins 1 and the three pyrethric acid esters (cinerin II, jasmolin II and pyrethrin II) are known as Pyrethrins 2 (Table 1). These six compounds with a typical stereo-

chemical configuration are together responsible for the insecticidal activity of the Pyrethrum extract. Pyrethrins are about 1.3 times more toxic than cinerins, and pyrethrin I and cinerin I are nearly four times more effective than pyrethrin II and cinerin II respectively, against houseflies. Pyrethrum extracts that are commercially available in the US usually contain 20 to 50% total pyrethrins. These extracts are commonly used to formulate end-use insecticide products, as well as over-the-counter head-lice control products which are regulated by the Food and Drug Administration^{1,10,30}.

Biological activity

Biological activities reported for the different species of *Chrysanthemum* plants are molluscicidal, cytotoxicity, antibacterial, inhibitory, pharmacological, toxicity, insecticidal, etc. The various biological activities reported

from different extracts of *Chrysanthemum* plants are summarized^{9,16,31-47} in Table 3.

Molluscicidal activity

C. cinerariaefolium is known for its insecticidal activity. Molluscicidal activities had previously been noted in the leaves of *C. cinerariaefolium*. Ten average size adult snails were placed in plastic beakers containing 500 ml water (depth 2.54 cm) in which various concentrations of acetone solution of the extract were added. Snails were fed on fresh lettuce leaves. Three replications per test solution were used. All tests were run for 24 h. Death of the snails was checked using WHO methods³¹. The essential oil from *C. viscidhirtum* also showed mild molluscicidal activity against *Bulinus truncatus*.

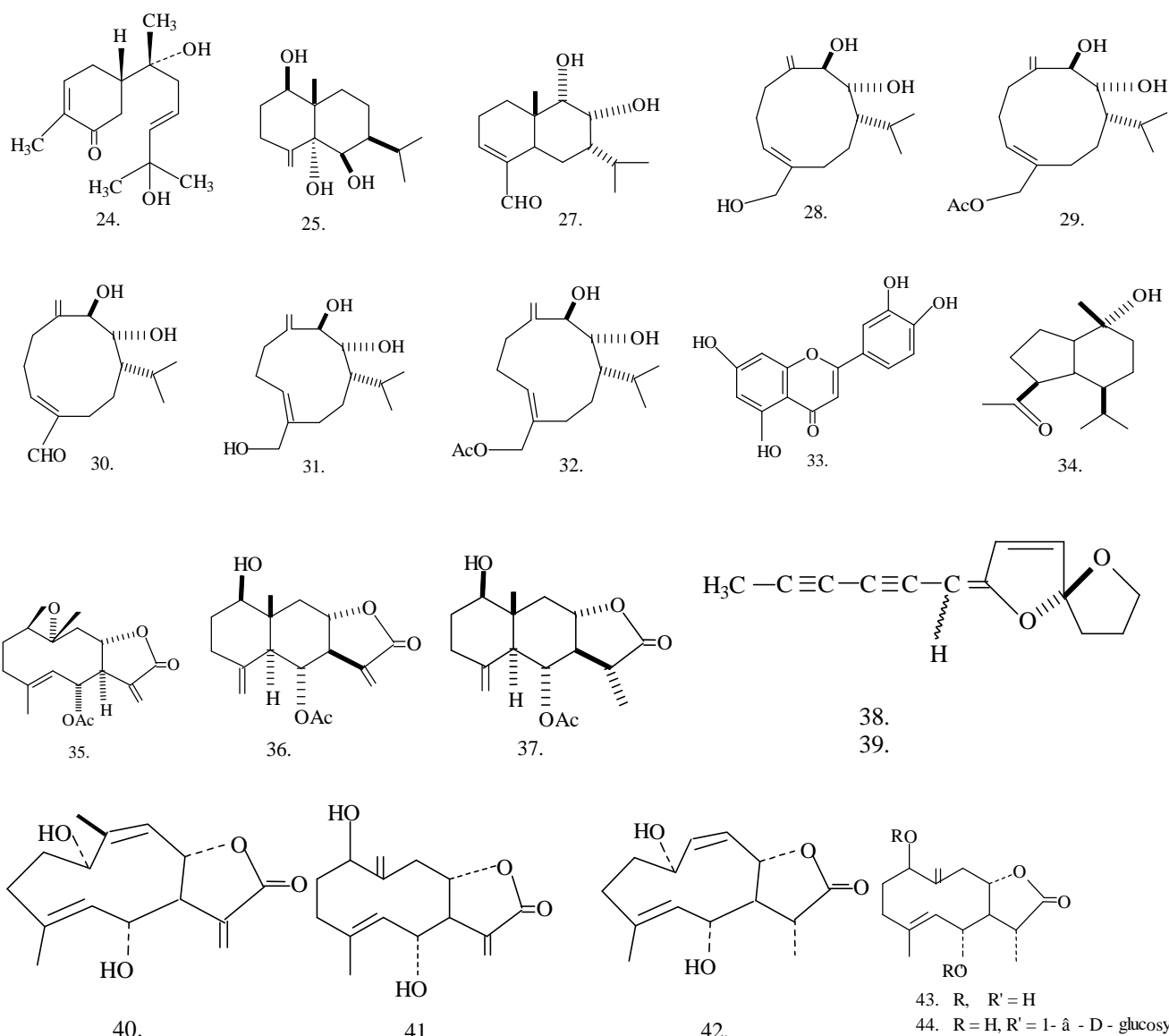


Table 3. Biological activity for extracts of *Chrysanthemum* plant

Plant extract	Plant part	Plant species	LC ₅₀ /IC ₅₀	Species	Reference
Molluscicidal activity					
Methanol extract	FLH	<i>Chrysanthemum cinerariaefolium</i>	125 ppm	Snails	31
Water extract*	AP	<i>C. viscidhirtum</i>	1070 ± 110 ppm	<i>Bulinus truncatus</i>	9
Cytotoxicity activity					
EtOH extract	AP	<i>C. coronarium</i>	83.3284	<i>Artemia salina</i>	32
Petrol – Et ₂ O extract	AP	<i>C. coronarium</i>	38.3772	<i>Artemia salina</i>	33
Water extract	EP	<i>C. sibiricum</i>	12.5 µg/ml	HL-60 cell	47
			102.4 µg/ml	HepG-2 cell	
Antibacterial activity					
Water extract*	AP	<i>C. viscidhirtum</i>	1.25	<i>Salmonella typhi</i>	9
Water extract*	AP	<i>C. viscidhirtum</i>	1.25	<i>Proteus mirabilis</i>	9
Water extract*	AP	<i>C. boreale</i>	MIC 1.6 mg/ml	<i>Staphylococcus aureus</i>	46
”	”	”	MIC > 12.8 mg/ml	<i>Staphylococcus epidermidis</i>	”
”	”	”	MIC 0.8 mg/ml	<i>Streptococcus pyogenes</i>	”
”	”	”	MIC 0.8 mg/ml	<i>Streptococcus mutans</i>	”
”	”	”	MIC > 12.8 mg/ml	<i>Enterococcus faecalis</i>	”
”	”	”	MIC 0.8 mg/ml	<i>Enterococcus gallinarum</i>	”
”	”	”	MIC > 12.8 mg/ml	<i>Salmonella typhimurium</i>	”
”	”	”	MIC 6.4 mg/ml	<i>Escherichia coli</i>	”
”	”	”	MIC 1.6 mg/ml	<i>E. coli</i> O157 : H7	”
”	”	”	MIC 1.6 mg/ml	<i>Enterobacter cloacae</i>	”
”	”	”	MIC > 12.8 mg/ml	<i>Klebsiella pneumoniae</i>	”
”	”	”	MIC > 12.8 mg/ml	<i>Pseudomonas aeruginosa</i>	”
”	”	”	MIC 0.8 mg/ml	<i>Vibrio vulnificus</i>	”
”	”	”	MIC 3.2 mg/ml	<i>Citrobacter freundii</i>	”
Antifungal activity					
Water extract*	FL	<i>C. coronarium</i>	Inhibition 79.4%	<i>Alternaria</i> sp.	45
”	”	”	Inhibition 53.8%	<i>Alternaria brassicola</i>	”
”	”	”	Inhibition 82.6%	<i>Aspergillus flavus</i>	”
”	”	”	Inhibition 60.1%	<i>Botrytis cinerea</i>	”
”	”	”	Inhibition 51.2%	<i>Fusarium moniliforme</i>	”
”	”	”	Inhibition 25.9%	<i>Fusarium solani</i>	”
”	”	”	Inhibition 21.4%	<i>Penicillium digitatum</i>	”
”	”	”	Inhibition 95.5%	<i>Pythium ultimum</i>	”
”	”	”	Inhibition 38.1%	<i>Rhizoctonia solani</i>	”
”	”	”	Inhibition 24.2%	<i>Sclerotinia sclerotiorum</i>	”
”	”	”	Inhibition 74.6%	<i>Serpula lacrymans</i>	”
”	”	”	Inhibition 4.7%	<i>Mycocentrospora acerina</i>	”
Nitric oxide production inhibitory activity					
Methanol extract	FL	<i>C. indicum</i>	89.2 µg/ml	LPS-activated macrophages	16
Ethyl acetate soluble portion	FL	”	17.3 µg/ml	”	16
1-Butanol soluble portion	FL	”	> 300 µg/ml	”	16
Water soluble portion	FL	”	> 300 µg/ml	”	16
Methanol extract	FL	”	3.5 µg/ml	Rat lens aldose reductase	33
Methanol extract	FL	<i>C. morifolium</i>	2.6 µg/ml	”	33
Pharmacological activity					
Aqueous extract	LF, ST	<i>C. indicum</i>	282.2 ± 5.2 mg/kg	Mice	34
Rat lens aldose reductase inhibitory activity					
Methanol extract	FL	<i>C. boreale</i>	5 × 10 ⁻⁷ M	Rat	35
Toxicity activity					
Dilute solution and oleoresin	FL	<i>C. cinerariaefolium</i>	> 1500 mg/kg	White rat	36
Oleoresin	FL	”	820 mg/kg	”	37
Purified concentrate	FL	”	1870 mg/kg	”	37
82% concentrate (oral)	FL	”	> 2600 mg/kg	”	38
86.2% concentrate (subcutaneous)	FL	”	> 1600 mg/kg	”	38
20% concentrate	FL	”	100–300 mg/kg	”	39
Partially dewaxed oleoresin	FL	”	794 mg/kg	”	40

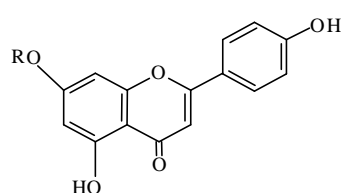
Contd...

Table 3. (Contd...)

Plant extract	Plant part	Plant species	LC ₅₀ /IC ₅₀	Species	Reference
Pale extract	FL	"	584 mg/kg	"	40
Oleoresin	FL	"	634 mg/kg	"	40
77.8% concentrate	FL	"	715–900 mg/kg	"	40
Commercial concentrate	FL	"	480 mg/kg	"	41
20% concentrate	FL	"	1440 mg/kg	"	42
Pyrethrin I	FL	"	260–420 mg/kg	"	43
Pyrethrin II	FL	"	>600 mg/kg	"	43
74% concentrate (oral route)	FL	"	470 mg/kg	"	**
74% concentrate (oral route)	FL	"	>1400 mg/kg	"	44

FLH, Flower heads; AP, Aerial parts; FL, Flowers; LPS, Lipopolysaccharide; LF, Leaves; ST, Stem; EP, Entire plant. *Hydro distillate.

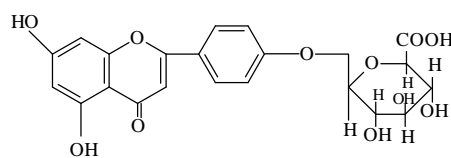
**T. B. Gaines and R. D. Kimbrough (pers. commun., 1972).



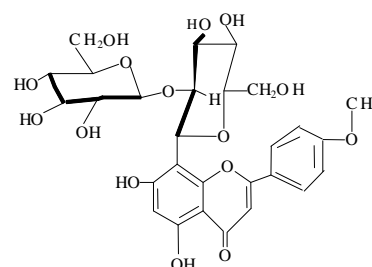
47. R = H

49. R = 7- Me-galacturonosyl

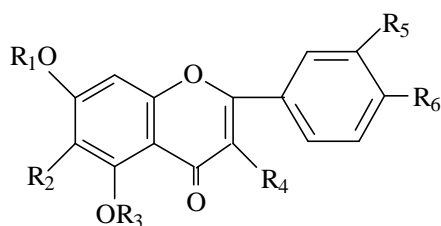
50. R = glucuronosyl



48.



52.



45. R₁ = gal, R₂ = H, R₃ = H, R₄ = H, R₅ = H, R₆ = OMe

46. R₁ = rha¹⁻⁶ glu, R₂ = H, R₃ = H, R₄ = H, R₅ = H, R₆ = OMe

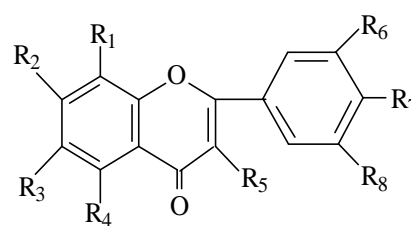
51. R₁ = gal, R₂ = H, R₃ = H, R₄ = H, R₅ = H, R₆ = OH

53. R₁ = glucosiduronyl, R₂ = OH, R₃ = H, R₄ = H, R₅ = H, R₆ = H

65. R₁ = H, R₂ = H, R₃ = H, R₄ = H, R₅ = OH, R₆ = OH

66. R₁ = glu, R₂ = H, R₃ = H, R₄ = H, R₅ = OH, R₆ = OH

69. R₁ = H, R₂ = H, R₃ = H, R₄ = OH, R₅ = OH, R₆ = OH



55. R₁ = H, R₂ = OH, R₃ = H, R₄ = OH, R₅ = H, R₆ = H, R₇ = H, R₈ = H

56. R₁ = H, R₂ = H, R₃ = OH, R₄ = H, R₅ = OH, R₆ = H, R₇ = OH, R₈ = H

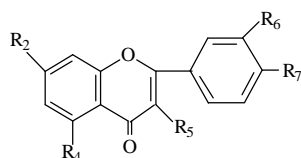
57. R₁ = H, R₂ = H, R₃ = H, R₄ = H, R₅ = H, R₆ = H, R₇ = H, R₈ = H

58. R₁ = H, R₂ = H, R₃ = H, R₄ = H, R₅ = OH, R₆ = H, R₇ = H, R₈ = H

60. R₁ = OH, R₂ = OH, R₃ = H, R₄ = H, R₅ = H, R₆ = H, R₇ = H, R₈ = H

67. R₁ = OH, R₂ = H, R₃ = OH, R₄ = H, R₅ = OH, R₆ = OH, R₇ = H, R₈ = OH

68. R₁ = H, R₂ = OH, R₃ = H, R₄ = OH, R₅ = OH, R₆ = OH, R₇ = OH, R₈ = OH



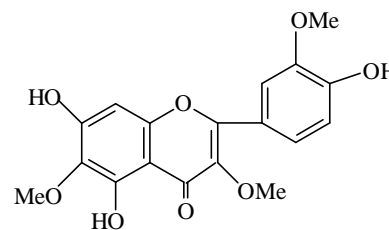
54. R₂ = OH, R₄ = OH, R₅ = OH, R₆ = OH, R₇ = OH

59. R₂ = H, R₄ = H, R₅ = H, R₆ = H, R₇ = H

61. R₂ = OH, R₄ = OH, R₅ = H, R₆ = H, R₇ = OH

62. R₂ = OH, R₄ = OH, R₅ = OH, R₆ = H, R₇ = H

63. R₂ = rha¹⁻⁶ glu, R₄ = OH, R₅ = H, R₆ = OH, R₇ = OMe



64.

Cytotoxicity

C. coronarium extracts showed high cytotoxicity. The most active one appeared to be the petroleum ether–diethyl ether extracts³². The essential oil from *C. sibiricum* exhibited cytotoxic properties along with mild antioxidant activity (IC₅₀ = 97.2 µg/ml)⁴⁷.

Nitric oxide production inhibitory activity

The methanolic extract and ethyl acetate-soluble portion from the flowers of *C. indicum* were found to show inhibitory activity against nitric oxide production in lipopolysaccharide-activated macrophages¹⁶.

Pharmacological activity

Aqueous extract of leaves and stem of *C. indicum* produced a concentration-dependent contraction of the rat duodenum, which was abolished by atropine. Preliminary phytochemical screening revealed the presence of glycosides, flavanoids, tannins and alkaloids in the extract³⁴.

Toxicity

Carpenter *et al.*³⁷, made an exhaustive study of the toxicity of pyrethrins and allethrin to rats, rabbits and dogs with inhalation studies, oral and skin exposure. They reported the oral LD₅₀ of Pyrethrum oleoresin at 820 mg/kg on male and female Sherman strain white rats, whereas the LD₅₀ of the purified 20% pyrethrins extract was 1870 mg/kg. Although the procedures used in the two tests varied a little, the comparison is still valid enough to show greater toxicity of the unpurified oleoresin.

Antibacterial activity

The essential oil of *C. viscidhirtum* exhibited strong activity against *Salmonella typhi* and *Proteus mirabilis*. The activity was investigated by agar dilution method⁹. Also, the essential oil of *C. boreale* exhibited the activity against six Gram +ve bacteria and 8 Gram –ve bacteria. The activity was investigated by broth dilution method⁴⁶.

Antifungal activity

The activity of *C. coronarium* was evaluated against 12 fungal species. In agar diffusion plate assay, the growth of *Alternaria* sp., *Aspergillus flavus* and *Pythium ultimum* was highly reduced (>80%) at the third day⁴⁶. Activity was also shown by essential oil from *C. viscidhirtum* against four fungi at concentration of 150 ppm⁴⁸.

Rat lens aldose reductase inhibitory activity

The methanol extract from whole parts of flowers of *C. boreale* was found to exhibit a significant inhibition of rat lens aldose reductase activity *in vitro*. Among the flavonoids isolated from extracts, luteolin was found to be the most potent AR inhibitor³⁵, with IC₅₀ value of 5 × 10⁻⁷ M.

Antimutagenic activity

Methanol extract from the flower head of *C. morifolium* showed a suppressive effect on umu gene expression of the SOS response in *Salmonella typhimurium* against the mutagen 2-(2-furyl)-3-(5-nitro-2-furyl) acrylamide. The four compounds, acacetin, apigenin, luteolin and quercetin suppressed 60.2, 75.7, 90.0 and 66.6 % of SOS-inducing activity at a concentration of 0.70 µmol/ml. These compounds were also active against other mutagens⁴⁹.

Conclusion

Secondary metabolism in *Chrysanthemum* plants appears to be a resource of many biologically active compounds. Pyrethrin and its derivatives are already being extensively used for insecticidal activity. *In vitro* studies on other active compounds identified in different species of *Chrysanthemum* may give new therapeutic and agricultural products of commercial importance.

1. Anon., *The Wealth of India, Raw Materials*, CSIR, New Delhi, 1950, vol. 2, pp. 143–148; 1992, vol. 3, pp. 505.
2. Bhat, B. K., Menary, R. C. and Pandita, P. N., Population improvement in Pyrethrum (*Chrysanthemum cinerariaefolium* Vis.). *Euphytica*, 1985, **34**, 613–617.
3. Pandita, P. N., Bhat, B. K. and Bhan, M. K., Selection indices in Pyrethrum (*Chrysanthemum cinerariaefolium* Vis.). *Pesticides*, 1989, **23**(1), 27–28.
4. Uchio, Y., Constituents of the essential oil of *Chrysanthemum japonense*. Nojigiku alcohol and its acetate. *Bull. Chem. Soc. Jpn.* 1978, **51**, 2342–2346.
5. Uchio, Y., Tomosue, K., Nakayama, M., Yamamura, A. and Waki, T., Constituents of the essential oils from three tetraploid species of *Chrysanthemum*. *Phytochemistry*, 1981, **20**, 2691–2693.
6. Stoianova-Ivanova, B., Budzikiewicz, H., Koumanova, B., Tsoutsoulova, A., Mladenova K. and Brauner, A., Essential oil of *Chrysanthemum indium*. *Planta Med.*, 1983, **49**, 236–239.
7. Storer, J. R., Elmore, J. S. and Emden, H. F. V., Airborne volatiles from the foliage of three cultivars of Autumn flowering *Chrysanthemums*. *Phytochemistry*, 1993, **34**, 1489–1492.
8. Saggari, P., Wamicha, W. N., Chhabra, S. C. and Ndalut, P., Isolation, identification and bioassay of repellent factors in the essential oil of Pyrethrum for grain protection against *Sitophilus zeamais* (Molts.). *Pyrethrum Post*, 1997, **19**, 126–131.
9. Khallouki, F., Hmamouchi, M., Younos, C., Soulimani, R., Bessiere, J. M. and Essassi, E. M., Antibacterial and molluscicidal activities of the essential oil of *Chrysanthemum viscidhirtum*. *Fitoterapia*, 2000, **71**, 544–546.
10. Essig, K. and Zhao, Z., Method development and validation of a high performance liquid chromatographic method for Pyrethrum extract. *J. Chromatogr. Sci.*, 2001, **39**, 473–480.

11. Haruna, M., Kato, M., Ito, K., Toshiaki, N., Sugihara, H. and Murata, H., Angeloylcumambrin-B, An antimicrobial and sesquiterpene lactone from *Chrysanthemum ornatum* var. spontaneous. *Phytochemistry*, 1981, **20**, 2583–2584.
12. Sashida, Y., Nakata, H., Shimomura, H. and Kagaya, M., Sesquiterpene lactones from Pyrethrum flowers. *Phytochemistry*, 1983, **22**, 1219–1222.
13. El-Masry, E., Abou-Donia, A. H. A., Darwish, F. A., Abou-karam, M. A., Grenz, M. and Bohlmann, F., Sesquiterpene lactones from *Chrysanthemum coronarium*. *Phytochemistry*, 1984, **23**, 2953–2954.
14. Mladenova, K., Tsankova, E. and Ivanova, B. S., Sesquiterpene lactones from *Chrysanthemum indicum*. *Planta Med.*, 1985, **3**, 284–285.
15. Hu, L. and Chen, Z., Sesquiterpenoid alcohols from *Chrysanthemum morifolium*. *Phytochemistry*, 1997, **44**, 1287–1290.
16. Yoshikawa, M., Morikawa, T., Toguchida, I., Harima, S. and Matsuda, H., Inhibitors of nitric oxide production and absolute stereostructures of five new germacrane-type sesquiterpenes, Kikkanols D, D Monoacetate, E, F and F Monoacetate from the flowers of *Chrysanthemum indicum* L. *Chem. Pharm. Bull.*, 2000, **48**, 651–656.
17. Galal, A. M., Microbial transformation of pyrethrosin. *J. Nat. Prod.*, 2001, **64**, 1098–1099.
18. Doskotch, R. W., El-feraly, F. S. and Hufford, C. D., Sesquiterpene lactones from Pyrethrum flowers. *Can. J. Chem.*, 1971, **49**, 2103–2110.
19. Barsby, R. W. J., Salan, U., Knight, D. W. and Hoult, J. R. S., Feverfew and vascular smooth muscle extracts from fresh and dried plants show opposing pharmacological profiles, dependent upon sesquiterpene lactone content. *Planta Med.*, 1993, **59**, 20–25.
20. Wilkomirski, B. and Dubielecka, B., Sterol content as a similarity marker of different organs of two varieties of *Chrysanthemum parthenium*. *Phytochemistry*, 1996, **42**, 1603–1604.
21. Chatterjee, A., Sarkar, S. and Saha, S. K., Acacetin 7-O-*b*-D-galactopyranoside from *Chrysanthemum indicum*. *Phytochemistry*, 1981, **20**, 1760–1761.
22. Hu, C. Q., Chen, K. and Shi, Q., Anti-aids agents, 10¹. Acacetin-7-O-*b*-D-galactopyranoside, an anti-HIV principle from *Chrysanthemum morifolium* and a structure–activity correlation with some related flavonoids. *J. Nat. Prod.*, 1994, **57**, 42–51.
23. Khallouki, F., Hmamouchi, M., Younos, C., Soulimani, R. and Essassi, E. M., A new flavonoid from the aerial parts of *Chrysanthemum viscidhirtum*. *Fitoterapia*, 2000, **71**, 413–416.
24. Mladenova, K., Tsankova, E., Kostova, I. and Ivanova, B. S., Indicumenone, a new bisabolane ketodiol from *Chrysanthemum indicum*. *Planta Med.*, 1987, **53**, 118–119.
25. Chuda, Y., Ono, H., Kameyama, M. O., Nagata, T. and Tsushida, T., Structural identification of two antioxidant quinic acid derivatives from garland (*Chrysanthemum coronarium* L.). *J. Agri. Food Chem.*, 1996, **44**, 2037–2039.
26. Head, S. W., Fatty acid composition of extract from Pyrethrum flowers (*Chrysanthemum cinerariaefolium*). *J. Agric. Food Chem.*, 1968, **16**, 762–765.
27. Rao, P. R., Seshadri, T. R. and Sharma, P., Polyphenolic constituents of Pyrethrum flowers (*Chrysanthemum cinerariaefolium*). *Curr. Sci.*, 1973, **42**, 811–812.
28. Wrang, P. A. and Lam, J., Polyacetylenes from *Chrysanthemum leucanthemum*. *Phytochemistry*, 1975, **14**, 1027–1035.
29. Zheng, C. H., Kim, T. H., Kin, K. H., Leem, Y. H. and Lee, H. J., Characterization of potent aroma compounds in *C. coronarium* L. (Garland) using aroma extract dilution analysis. *Flavour Fragrance J.*, 2004, **19**, 401–405.
30. Bindra, R. L., Kahol, A. P. and Kumar, S., An efficient process for the preparation of pyrethrum oleoresin from the capitula (flowers) of *Chrysanthemum cinerariaefolium*. *J. Med. Aromat. Plant Sci.*, 1999, **21**, 677–678.
31. Ogur, J. A., Nawwar, G. A. M., Saleh, N. A. M. and Mosharrafa, S. A. M., Molluscicidal efficacy of certain Kenyan indigenous plants. *Fitoterapia*, 1994, **65**, 176–177.
32. Gurkan, E., Koksak, E. P. and Sarioglu, I., Cytotoxicity assay of *Chrysanthemum coronarium*. *Fitoterapia*, 1998, **69**, 284.
33. Matsuda, H., Morikawa, T., Toguchida, I. and Yoshikawa, M., Structural requirements of flavonoids and related compounds for aldose reductase inhibitory activity. *Chem. Pharm. Bull.*, 2002, **50**, 788–795.
34. Amos, S., Gamani, K., Adamu, M., Bukar, B., Akash, P. and Wambebe, C., Pharmacological effect of aqueous extract of *Chrysanthemum indicum* on gastrointestinal smooth muscles. *J. Herbs, Spices Med. Plants*, 2000, **7**, 45–53.
35. Shin, K. H., Kang, S. S., Seo, E. A. and Shin, S. W., Isolation of aldose reductase inhibitors from the flowers of *C. boreale*. *Arch. Pharmacol. Res.*, 1995, **18**, 65–68.
36. Shimkin, M. B. and Anderson, H. H., Acute toxicities of rotenone and mixed pyrethrins in mammals. *Proc. Soc. Exp. Biol. Med.*, 1936, **34**, 135–138.
37. Carpenter, C. P., Weil, C. S., Pozzani, U. C. and Symthe Jr. H. C., Comparative acute and subacute toxicities of allethrin and pyrethrin. *Arch. Indian Hyg. Occup. Med.*, 1950, **2**, 420–432.
38. Ambrose, A. M. and Robbins, D. J., Comparative toxicity of pyrethrin and allethrin. *Fed. Proc., Fed. Am. Soc. Exp. Biol.*, 1951, **10**, 276–277.
39. Hayes Jr. W. J., Insecticides, rotenticides and other economic poisons. In *Drill's Pharmacology in Medicine* (ed. DePalma, J. P.), McGraw Hill, New York, 1965, pp. 989–1004.
40. Malone, J. C. and Brown, N. C., Toxicity of various grades of pyrethrum to laboratory animals. *Pyrethrum Post*, 1968, **9**, 3–8.
41. Beck, P., Memorandum to McLaughlin Gormley King, Minneapolis, Minnesota, 1969.
42. Bond, H. W. and DeFeo, J. J., Toxicity of pyrethrum in combination with certain common chemicals and drugs. Report of University of Rhode Islands to Kenya Pyrethrum Co, 1969.
43. Casida, J. E., Kimmel, E. C., Elliott, M. and Janes, N. F., Oxidative metabolism of pyrethrin in mammals. *Nature*, 1971, **230**, 326–327.
44. Verschoyle, R. D. and Barnes, J. M., Toxicity of natural and synthetic pyrethrins to rats. *Pestic. Biochem. Physiol.*, 1972, **2**, 308–311.
45. Alvarez-Castellanos, P. P., Bishop, C. D. and Pascaul-Villalobos, M. J., Antifungal activity of the essential oil of flowerheads of garland chrysanthemum (*C. coronarium*) against agricultural pathogens. *Phytochemistry*, 2001, **57**, 99–102.
46. Kim, K. J., Kim, Y. H., Yu, H. H., Jeong, S., Cha, J. D., Kil, B. S. and You, Y. O., Antibacterial activity and chemical composition of essential oil of *C. boreale*. *Planta Med.*, 2003, **69**, 271–274.
47. Lee, K. T., Choi, J. W., Park, J. H., Jung, W. T., Jung, H. J. and Park, H. J., Composition of the essential oil of *C. sibiricum*. *Nat. Prod. Sci.*, 2002, **8**, 133–136.
48. Bouchra, C., Mahamed, A., Mina, I. H. and Hmamouchi, M., Antifungal activity of essential oils from several medicinal plants against four postharvest citrus pathogens. *Phytopathol. Mediterr.*, 2003, **42**, 251–256.
49. Miyazawa, M. and Hisama, M., Antimutagenic activity of flavonoids from *C. morifolium*. *Biosci. Biotechnol. Biochem.*, 2003, **67**, 2091–2099.

ACKNOWLEDGEMENTS. We are grateful to the Director, CIMAP, Lucknow for providing library facility and for the award of project assistantship to S.P.S. and A.K. This is CIMAP Communication No. 2005-3R.

Received 29 January 2005; revised accepted 4 July 2005